

RECEIVED

MAR 29 2011

DISTRICT I  
1625 N. FRENCH DR., HOBBS, NM 88240

DISTRICT II  
1301 W. GRAND AVENUE, ARTESIA, NM 88210

DISTRICT III  
1000 RIO BRAZOS RD., AZTEC, NM 87410

DISTRICT IV  
11885 S. ST. FRANCIS DR., SANTA FE, NM 87505

State of New Mexico  
Energy, Minerals and Natural Resources Department

**OIL CONSERVATION DIVISION**  
11885 SOUTH ST. FRANCIS DR.  
Santa Fe, New Mexico 87505

Form C-102

Revised October 12, 2005

Submit to Appropriate District Office

State Lease - 4 Copies

Fee Lease - 3 Copies

## WELL LOCATION AND ACREAGE DEDICATION PLAT

☐ AMENDED REPORT

|                                   |  |   |
|-----------------------------------|--|---|
| API Number<br><b>30-025-40014</b> | Pool Code<br><b>6660</b>                   | Pool Name<br><b>BLUEBRY OIL + GAS (OIL)</b> <i>KZ</i> |
| Property Code<br><b>306625</b>    | Property Name<br><b>WALTER LYNCH</b>       | Well Number<br><b>14</b>                              |
| OGRID No.<br><b>873</b>           | Operator Name<br><b>APACHE CORPORATION</b> | Elevation<br><b>3360'</b>                             |

## Surface Location

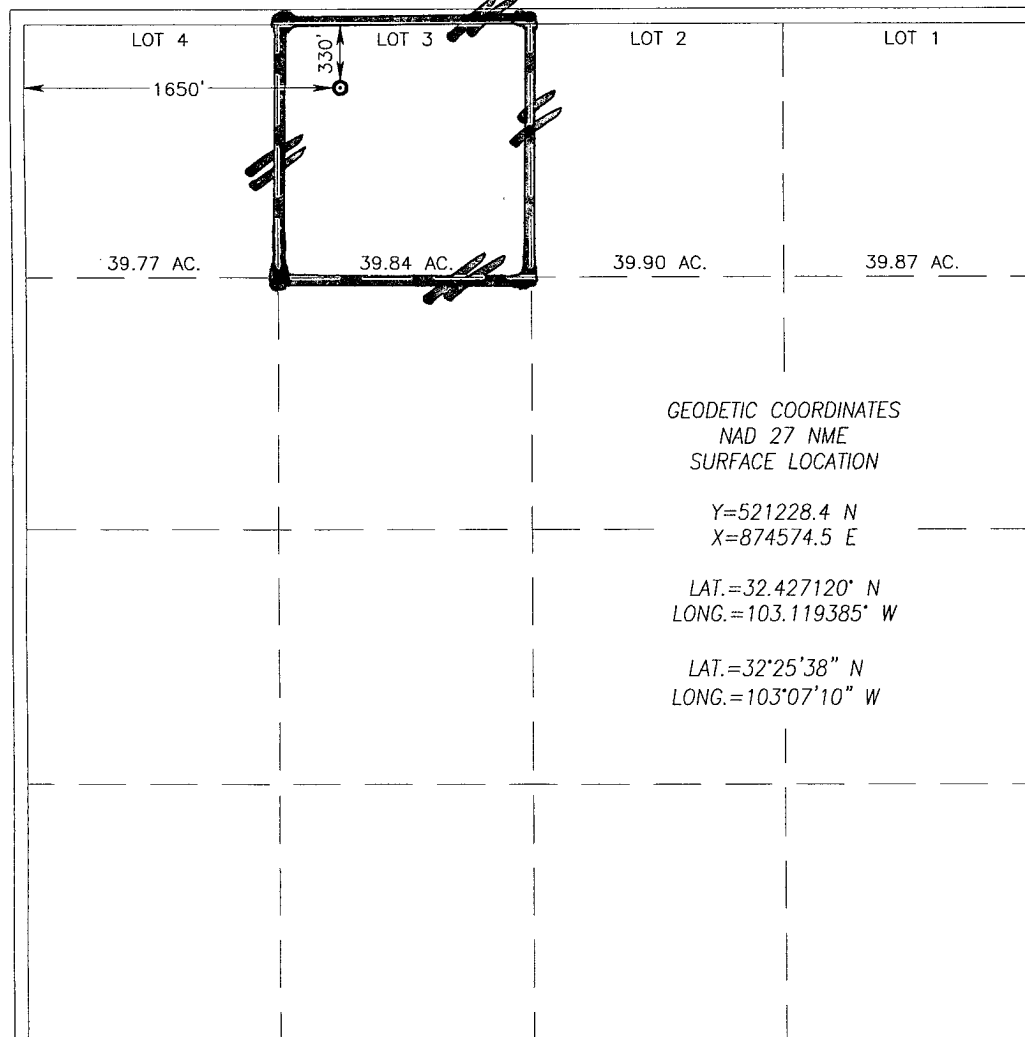
| UL or lot No. | Section | Township | Range | Lot Idn | Feet from the | North/South line | Feet from the | East/West line | County |
|---------------|---------|----------|-------|---------|---------------|------------------|---------------|----------------|--------|
| 3             | 1       | 22-S     | 37-E  | 3       | 330           | NORTH            | 1650          | WEST           | LEA    |

## Bottom Hole Location If Different From Surface

| UL or lot No. | Section | Township | Range | Lot Idn | Feet from the | North/South line | Feet from the | East/West line | County |
|---------------|---------|----------|-------|---------|---------------|------------------|---------------|----------------|--------|
|               |         |          |       |         |               |                  |               |                |        |

|                              |                 |                    |                                 |
|------------------------------|-----------------|--------------------|---------------------------------|
| Dedicated Acres<br><b>40</b> | Joint or Infill | Consolidation Code | Order No.<br><b>DHC-HOB-442</b> |
|------------------------------|-----------------|--------------------|---------------------------------|

NO ALLOWABLE WILL BE ASSIGNED TO THIS COMPLETION UNTIL ALL INTERESTS HAVE BEEN CONSOLIDATED  
OR A NON-STANDARD UNIT HAS BEEN APPROVED BY THE DIVISION



## OPERATOR CERTIFICATION

I hereby certify that the information herein is true and complete to the best of my knowledge and belief, and that this organization either owns a working interest or unleased mineral interest in the land including the proposed bottom hole location or has a right to drill this well at this location pursuant to a contract with an owner of such mineral or working interest, or to a voluntary pooling agreement or a compulsory pooling order heretofore entered by the division.

*Reesa Holland* 3/17/11  
Signature Date

**REESEA HOLLAND**  
Printed Name

## SURVEYOR CERTIFICATION

I hereby certify that the well location shown on this plat was plotted from field notes of actual surveys made by me or under my supervision, and that the same is true and correct to the best of my belief.

DECEMBER 17, 2010

Date Surveyed DSS

Signature &amp; Seal of Professional Surveyor

*Ronald G. Eidson* 01/07/2010  
10.11.1846  
Certificate No. GARY G. EIDSON 12641  
RONALD G. EIDSON 3239

*JW*

RECEIVED

DISTRICT I  
1625 N. FRENCH DR., HOBBS, NM 88240

State of New Mexico  
Energy, Minerals and Natural Resources Department

Form C-102

Revised October 12, 2005

Submit to Appropriate District Office

State Lease - 4 Copies

Fee Lease - 3 Copies

DISTRICT II  
1301 W. GRAND AVENUE, ARTESIA, NM 88210

DISTRICT III  
1000 RIO BRAZOS RD., AZTEC, NM 87410

OIL CONSERVATION DIVISION

11885 SOUTH ST. FRANCIS DR.  
Santa Fe, New Mexico 87505

DISTRICT IV  
11885 S. ST. FRANCIS DR., SANTA FE, NM 87505

WELL LOCATION AND ACREAGE DEDICATION PLAT

☐ AMENDED REPORT

|                                   |  |   |
|-----------------------------------|--|---|
| API Number<br><b>30-025-40014</b> | Pool Code<br><b>60240</b>                  | Pool Name<br><b>TUBB OIL + GAS (OIL) Ke</b> |
| Property Code<br><b>306625</b>    | Property Name<br><b>WALTER LYNCH</b>       | Well Number<br><b>14</b>                    |
| OGRID No.<br><b>873</b>           | Operator Name<br><b>APACHE CORPORATION</b> | Elevation<br><b>3360'</b>                   |

Surface Location

|                           |                     |                         |                      |         |                             |                                  |                              |                               |                      |
|---------------------------|---------------------|-------------------------|----------------------|---------|-----------------------------|----------------------------------|------------------------------|-------------------------------|----------------------|
| UL or lot No.<br><b>3</b> | Section<br><b>1</b> | Township<br><b>22-S</b> | Range<br><b>37-E</b> | Lot Idn | Feet from the<br><b>330</b> | North/South line<br><b>NORTH</b> | Feet from the<br><b>1650</b> | East/West line<br><b>WEST</b> | County<br><b>LEA</b> |
|---------------------------|---------------------|-------------------------|----------------------|---------|-----------------------------|----------------------------------|------------------------------|-------------------------------|----------------------|

Bottom Hole Location If Different From Surface

|                              |         |                 |                    |         |                                 |                  |               |                |        |
|------------------------------|---------|-----------------|--------------------|---------|---------------------------------|------------------|---------------|----------------|--------|
| UL or lot No.                | Section | Township        | Range              | Lot Idn | Feet from the                   | North/South line | Feet from the | East/West line | County |
| Dedicated Acres<br><b>40</b> |         | Joint or Infill | Consolidation Code |         | Order No.<br><b>DHC-HOB-442</b> |                  |               |                |        |

NO ALLOWABLE WILL BE ASSIGNED TO THIS COMPLETION UNTIL ALL INTERESTS HAVE BEEN CONSOLIDATED  
OR A NON-STANDARD UNIT HAS BEEN APPROVED BY THE DIVISION

|   |               |           |           |
|---|---------------|-----------|-----------|
| LOT 4<br>1650'  | LOT 3<br>330' | LOT 2     | LOT 1     |
| 39.77 AC.   | 39.84 AC.     | 39.90 AC. | 39.87 AC. |
| GEODETIC COORDINATES<br>NAD 27 NME<br>SURFACE LOCATION<br><br>Y=521228.4 N<br>X=874574.5 E<br><br>LAT.=32.427120° N<br>LONG.=103.119385° W<br><br>LAT.=32°25'38" N<br>LONG.=103°07'10" W  |               |           |           |
| <b>OPERATOR CERTIFICATION</b><br><br>I hereby certify that the information herein is true and complete to the best of my knowledge and belief, and that this organization either owns a working interest or unleased mineral interest in the land including the proposed bottom hole location or has a right to drill this well at this location pursuant to a contract with an owner of such mineral or working interest, or to a voluntary pooling agreement or a compulsory pooling order heretofore entered by the division.<br><br><i>Reesa Holland</i> 3/17/11<br>Signature Date<br><b>REESEA HOLLAND</b><br>Printed Name |               |           |           |
| <b>SURVEYOR CERTIFICATION</b><br><br>I hereby certify that the well location shown on this plat was plotted from field notes of actual surveys made by me or under my supervision, and that the same is true and correct to the best of my belief.<br><br>DECEMBER 17, 2010<br><br>Date Surveyed DSS<br>Signature & Seal of Professional Surveyor<br><i>Ronald L. Eidson</i> 01/07/2010<br>NEW MEXICO<br>10.11.1846<br>Certificate No. GARY C. EIDSON 12841<br>RONALD L. EIDSON 3239  |               |           |           |