

RECEIVED

DISTRICT I

1625 N. FRENCH DR., HOBBS, NM 88240

JUL 30 2010

HOBBSOCD

DISTRICT II

1301 W. GRAND AVENUE, ARTESIA, NM 88210

DISTRICT III

1000 Rio Brazos Rd., Aztec, NM 87410

DISTRICT IV

1220 S. ST. FRANCIS DR., SANTA FE, NM 87505

State of New Mexico

Energy, Minerals and Natural Resources Department

OIL CONSERVATION DIVISION

1220 SOUTH ST. FRANCIS DR.
Santa Fe, New Mexico 87505

RECEIVED

APR 21 2011
HOBBSOCD

Form C-102

Revised October 12, 2005

Submit to Appropriate District Office

State Lease - 4 Copies

Fee Lease - 3 Copies

WELL LOCATION AND ACREAGE DEDICATION PLAT

☐ AMENDED REPORT

API Number 30-025-29780	Pool Code 1923 ✓	Pool Name Anderson Ranch; Wolfcamp, West
Property Code 38054	Property Name CHERRY STATE	Well Number 1H
OGRID No. 013837	Operator Name MACK ENERGY CORPORATION	Elevation 4346'

Surface Location

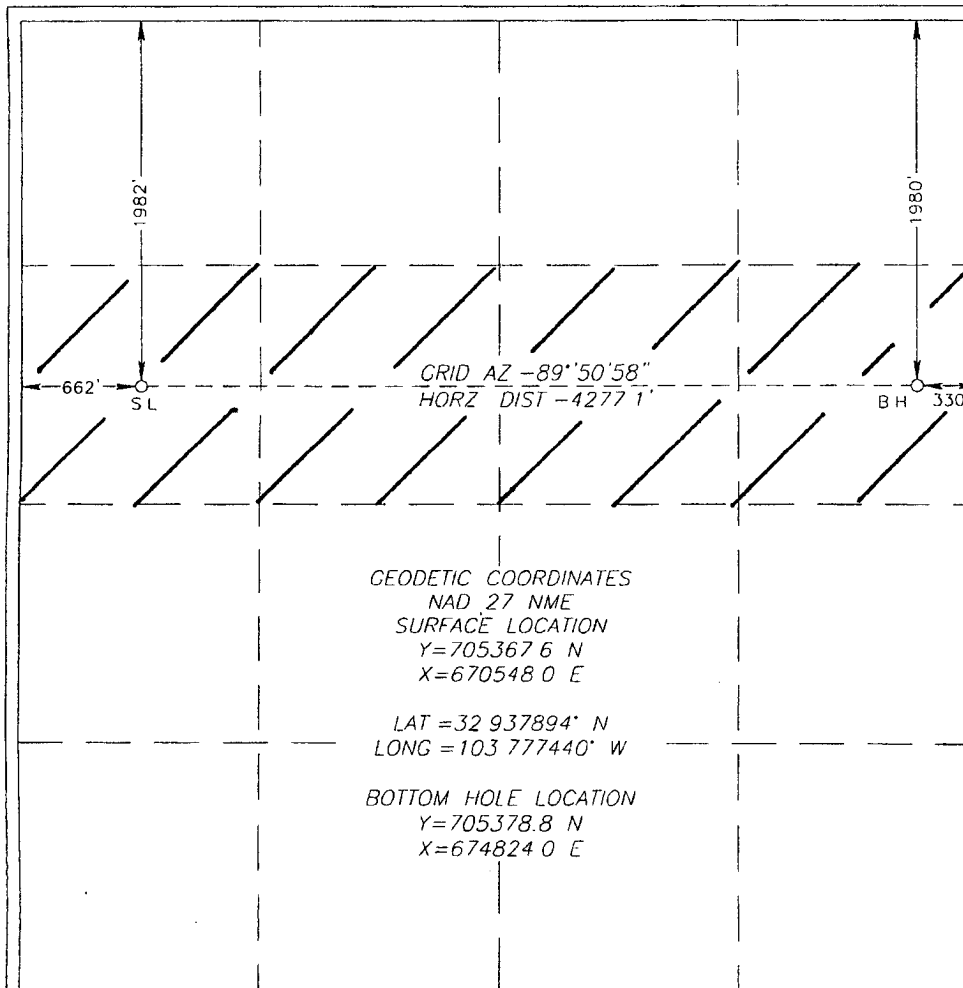
UL or lot No.	Section	Township	Range	Lot Idn	Feet from the	North/South line	Feet from the	East/West line	County
E	9	16-S	32-E		1982	NORTH	662	WEST	LEA

Bottom Hole Location If Different From Surface

UL or lot No.	Section	Township	Range	Lot Idn	Feet from the	North/South line	Feet from the	East/West line	County
H	9	16-S	32-E		1980	NORTH	330	EAST	LEA

Dedicated Acres	Joint or Infill	Consolidation Code	Order No.
160			

NO ALLOWABLE WILL BE ASSIGNED TO THIS COMPLETION UNTIL ALL INTERESTS HAVE BEEN CONSOLIDATED
OR A NON-STANDARD UNIT HAS BEEN APPROVED BY THE DIVISION



GEODETIC COORDINATES
NAD 27 NME
SURFACE LOCATION
Y=705367.6 N
X=670548.0 E

LAT = 32 937894° N
LONG = 103 777440° W

BOTTOM HOLE LOCATION
Y=705378.8 N
X=674824.0 E

OPERATOR CERTIFICATION

I hereby certify that the information herein is true and complete to the best of my knowledge and belief, and that this organization either owns a working interest or unleased mineral interest in the land including the proposed bottom hole location or has a right to drill this well at this location pursuant to a contract with an owner of such mineral or working interest, or to a voluntary pooling agreement or a compulsory pooling order heretofore entered by the division

Jerry W. Sherrell 7/28/10
Signature Date

Jerry W. Sherrell
Printed Name

SURVEYOR CERTIFICATION

I hereby certify that the well location shown on this plat was plotted from field notes of actual surveys made by me or under my supervision, and that the same is true and correct to the best of my belief.

RONALD J. EIDSON
NEW MEXICO
Date Surveyed: 7/22/2010
Signature & Seal of Professional Surveyor 3239
Ronald J. Eidson

Certificate No. RONALD EIDSON 3239

RECEIVED

JUL 23 2010