

DISTRICT I
1625 N. FRENCH DR., HOBBS, NM 88240

DISTRICT II
1301 W. GRAND AVENUE, ARTESIA, NM 88210

DISTRICT III
1000 RIO BRAZOS RD., AZTEC, NM 87410

DISTRICT IV
11885 S. ST. FRANCIS DR., SANTA FE, NM 87505

State of New Mexico
Energy, Minerals and Natural Resources Department

OIL CONSERVATION DIVISION
11885 SOUTH ST. FRANCIS DR.
Santa Fe, New Mexico 87505

Form C-102

Revised October 12, 2005
Submit to Appropriate District Office
State Lease - 4 Copies
Fee Lease - 3 Copies

WELL LOCATION AND ACREAGE DEDICATION PLAT

☐ AMENDED REPORT

API Number 30-025-40119	Pool Code 66660	Pool Name Blinebry Oil and Gas (oil)
Property Code 306597	Property Name DAYTON HARDY	Well Number 8
OGRID No. 873	Operator Name APACHE CORPORATION	Elevation 3498'

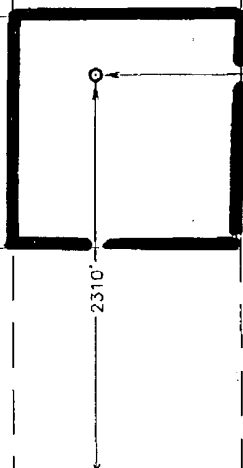
Surface Location

UL or lot No. J	Section 20	Township 21-S	Range 37-E	Lot Idn	Feet from the 2310	North/South line SOUTH	Feet from the 2160	East/West line EAST	County LEA
---------------------------	----------------------	-------------------------	----------------------	---------	------------------------------	----------------------------------	------------------------------	-------------------------------	----------------------

Bottom Hole Location If Different From Surface

UL or lot No.	Section	Township	Range	Lot Idn	Feet from the	North/South line	Feet from the	East/West line	County
Dedicated Acres 40		Joint or Infill	Consolidation Code	Order No.					

NO ALLOWABLE WILL BE ASSIGNED TO THIS COMPLETION UNTIL ALL INTERESTS HAVE BEEN CONSOLIDATED
OR A NON-STANDARD UNIT HAS BEEN APPROVED BY THE DIVISION

GEODETTIC COORDINATES NAD 27 NME SURFACE LOCATION Y=534203.0 N X=854775.9 E LAT.=32.463381° N LONG.=103.183086° W LAT.=32°27'48" N LONG.=103°10'59" W		
OPERATOR CERTIFICATION I hereby certify that the information herein is true and complete to the best of my knowledge and belief, and that this organization either owns a working interest or unleased mineral interest in the land including the proposed bottom hole location or has a right to drill this well at this location pursuant to a contract with an owner of such mineral or working interest, or to a voluntary pooling agreement or a compulsory pooling order heretofore entered by the division. Sorina L. Flores 4/27/11 Signature Date Sorina L. Flores Printed Name		
SURVEYOR CERTIFICATION I hereby certify that the well location shown on this plat was plotted from field notes of actual surveys made by me or under my supervision, and that the same is true and correct to the best of my belief. DECEMBER 20, 2010 Date Surveyed Signature of Seal of Professional Surveyor Ronald G. Edson 01/07/2011 Certificate No. GARY C. EDSON 12641 RONALD G. EDSON 3239		

DISTRICT I
1625 N. FRENCH DR., HOHDS, NM 88240

DISTRICT II
1301 W. GRAND AVENUE, ARTESIA, NM 88210

DISTRICT III
1000 RIO BRAZOS RD., AZTEC, NM 87410

DISTRICT IV
11885 S. ST. FRANCIS DR., SANTA FE, NM 87505

State of New Mexico
Energy, Minerals and Natural Resources Department

OIL CONSERVATION DIVISION
11885 SOUTH ST. FRANCIS DR.
Santa Fe, New Mexico 87505

Form C-102
Revised October 12, 2003
Submit to Appropriate District Office
State Lease - 4 Copies
Fee Lease - 3 Copies

WELL LOCATION AND ACREAGE DEDICATION PLAT

☐ AMENDED REPORT

API Number 30-025-40119	Pool Code 60240	Pool Name Tubb Oil and Gas (oil)
Property Code 306597	Property Name DAYTON HARDY	Well Number 8
OGRID No. 873	Operator Name APACHE CORPORATION	Elevation 3498'

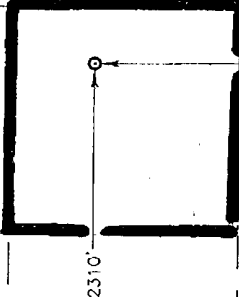
Surface Location

UL or lot No. J	Section 20	Township 21-S	Range 37-E	Lot Idn	Feet from the 2310	North/South line SOUTH	Feet from the 2160	East/West line EAST	County LEA
---------------------------	----------------------	-------------------------	----------------------	---------	------------------------------	----------------------------------	------------------------------	-------------------------------	----------------------

Bottom Hole Location If Different From Surface

UL or lot No.	Section	Township	Range	Lot Idn	Feet from the	North/South line	Feet from the	East/West line	County
Dedicated Acres 40	Joint or Infill	Consolidation Code	Order No.						

NO ALLOWABLE WILL BE ASSIGNED TO THIS COMPLETION UNTIL ALL INTERESTS HAVE BEEN CONSOLIDATED
OR A NON-STANDARD UNIT HAS BEEN APPROVED BY THE DIVISION

<p>GEODETIC COORDINATES NAD 27 NME SURFACE LOCATION</p> <p>Y=534203.0 N X=854775.9 E</p> <p>LAT.=32.463381° N LONG.=103.183086° W</p> <p>LAT.=32°27'48" N LONG.=103°10'59" W</p> 	<p>OPERATOR CERTIFICATION</p> <p>I hereby certify that the information herein is true and complete to the best of my knowledge and belief, and that this organization either owns a working interest or unleased mineral interest in the land including the proposed bottom hole location or has a right to drill this well at this location pursuant to a contract with an owner of such mineral or working interest, or to a voluntary pooling agreement or a compulsory pooling order heretofore entered by the division.</p> <p><i>Sorina L Flores</i> 4/27/11 Signature Date</p> <p>Sorina L. Flores Printed Name</p> <p>SURVEYOR CERTIFICATION</p> <p>I hereby certify that the well location shown on this plat was plotted from field notes of actual surveys made by me or under my supervision, and that the same is true and correct to the best of my belief.</p> <p>DECEMBER 20, 2010</p> <p>Date Surveyed DSS</p> <p>Signature & Seal of Professional Surveyor</p> <p><i>Ronald J. Eidson</i> 10/07/2011 10.11.1851</p> <p>Certificate No. GARY G. EIDSON 12841 RONALD J. EIDSON 3239</p>
--	--

DISTRICT I
1625 N. FRENCH DR., HOBBS, NM 88240

DISTRICT II
1301 W. GRAND AVENUE, ARTESIA, NM 88210

DISTRICT III
1000 RIO BRAZOS RD., AZTEC, NM 87410

DISTRICT IV
11885 S. ST. FRANCIS DR., SANTA FE, NM 87505

State of New Mexico
Energy, Minerals and Natural Resources Department

OIL CONSERVATION DIVISION
11885 SOUTH ST. FRANCIS DR.
Santa Fe, New Mexico 87505

Form C-102
Revised October 12, 2005
Submit to Appropriate District Office
State Lease - 4 Copies
Fee Lease - 3 Copies

WELL LOCATION AND ACREAGE DEDICATION PLAT

☐ AMENDED REPORT

API Number 30-025-40119	Pool Code 19190	Pool Name DrinKard
Property Code 306597	Property Name DAYTON HARDY	Well Number 8
OGRID No. 873	Operator Name APACHE CORPORATION	Elevation 3498'

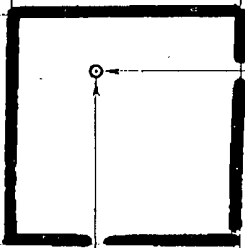
Surface Location

UL or lot No. J	Section 20	Township 21-S	Range 37-E	Lot Idn	Feet from the 2310	North/South line SOUTH	Feet from the 2160	East/West line EAST	County LEA
---------------------------	----------------------	-------------------------	----------------------	---------	------------------------------	----------------------------------	------------------------------	-------------------------------	----------------------

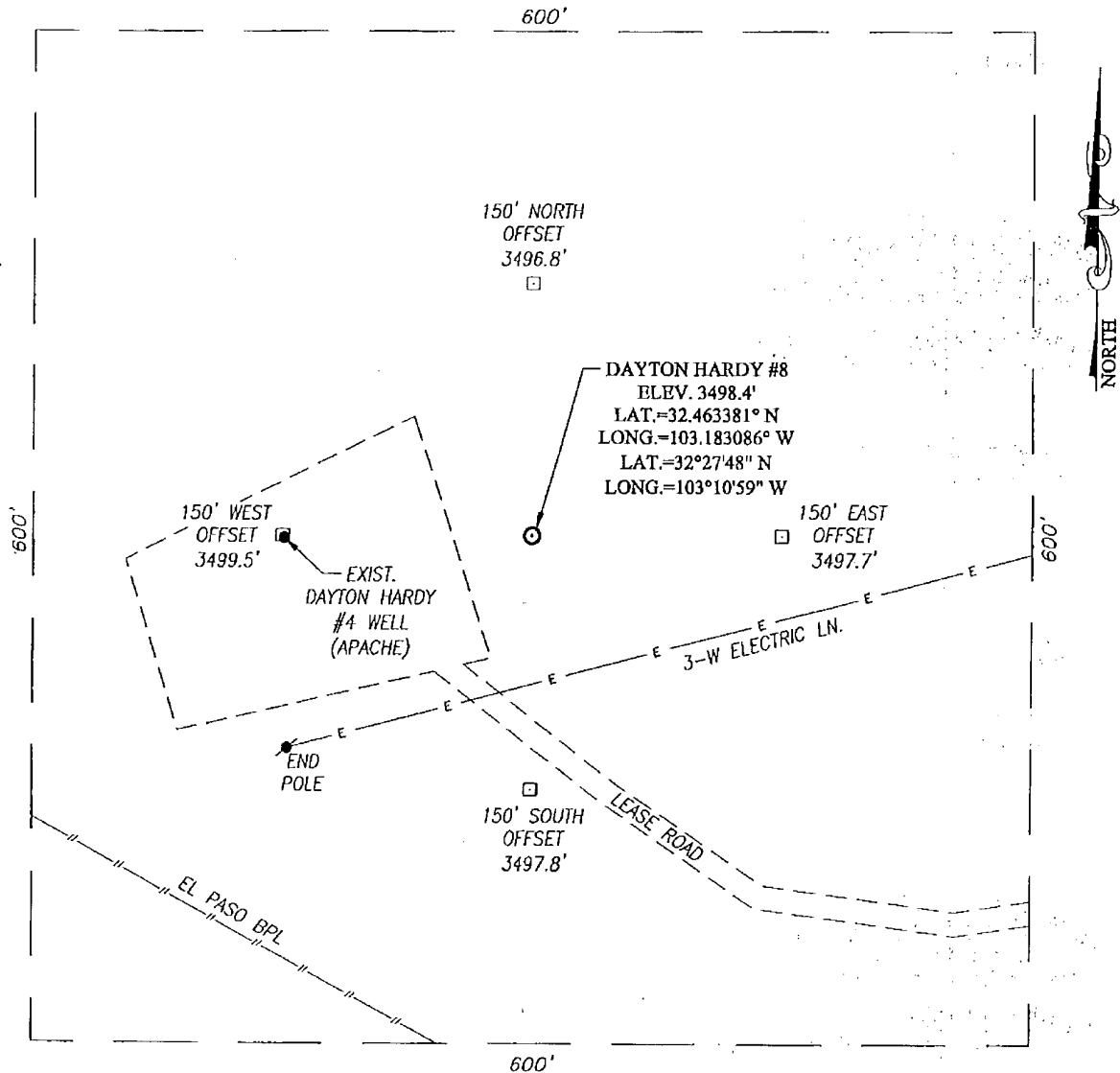
Bottom Hole Location If Different From Surface

UL or lot No.	Section	Township	Range	Lot Idn	Feet from the	North/South line	Feet from the	East/West line	County
Dedicated Acres 40		Joint or Infill	Consolidation Code	Order No.					

NO ALLOWABLE WILL BE ASSIGNED TO THIS COMPLETION UNTIL ALL INTERESTS HAVE BEEN CONSOLIDATED
OR A NON-STANDARD UNIT HAS BEEN APPROVED BY THE DIVISION

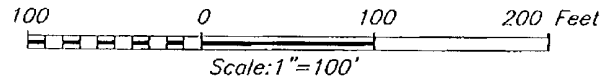
<p>GEODETIC COORDINATES NAD 27 NME SURFACE LOCATION</p> <p>Y=534203.0 N X=854775.9 E</p> <p>LAT.=32.463381° N LONG.=103.183086° W</p> <p>LAT.=32°27'48" N LONG.=103°10'59" W</p>				<p>OPERATOR CERTIFICATION</p> <p>I hereby certify that the information herein is true and complete to the best of my knowledge and belief, and that this organization either owns a working interest or unleased mineral interest in the land including the proposed bottom hole location or has a right to drill this well at this location pursuant to a contract with an owner of such mineral or working interest, or to a voluntary pooling agreement or a compulsory pooling order heretofore entered by the division.</p> <p><i>Sorina L. Flores</i> 4/27/11 Signature Date</p> <p>Sorina L. Flores Printed Name</p>	
				<p>SURVEYOR CERTIFICATION</p> <p>I hereby certify that the well location shown on this plat was plotted from field notes of actual surveys made by me or under my supervision, and that the same is true and correct to the best of my belief.</p> <p>DECEMBER 20, 2010</p> <p>Date Surveyed DSS</p> <p>Signature & Seal of Professional Surveyor</p> <p><i>Ronald J. Edson</i> 01/07/2011 10.11.1851</p> <p>Certificate No. GARY G. EDSON 12841 RONALD J. EDSON 3239</p>	

SECTION 20, TOWNSHIP 21 SOUTH, RANGE 37 EAST, N.M.P.M.,
LEA COUNTY NEW MEXICO



DIRECTIONS TO LOCATION

FROM THE INTERSECTION ST. HWY. #8 AND CO. RD. #E33 (TURNER RD.), GO NORTH ON CO. RD. #E33 APPROX. 1.4 MILES. TURN LEFT AND GO WEST APPROX. 0.4 MILES. VEER RIGHT AND GO NORTHWEST APPROX. 350 FEET. THIS LOCATION STAKE IS APPROX. 100 FEET NORTH OF LEASE ROAD.



APACHE CORPORATION

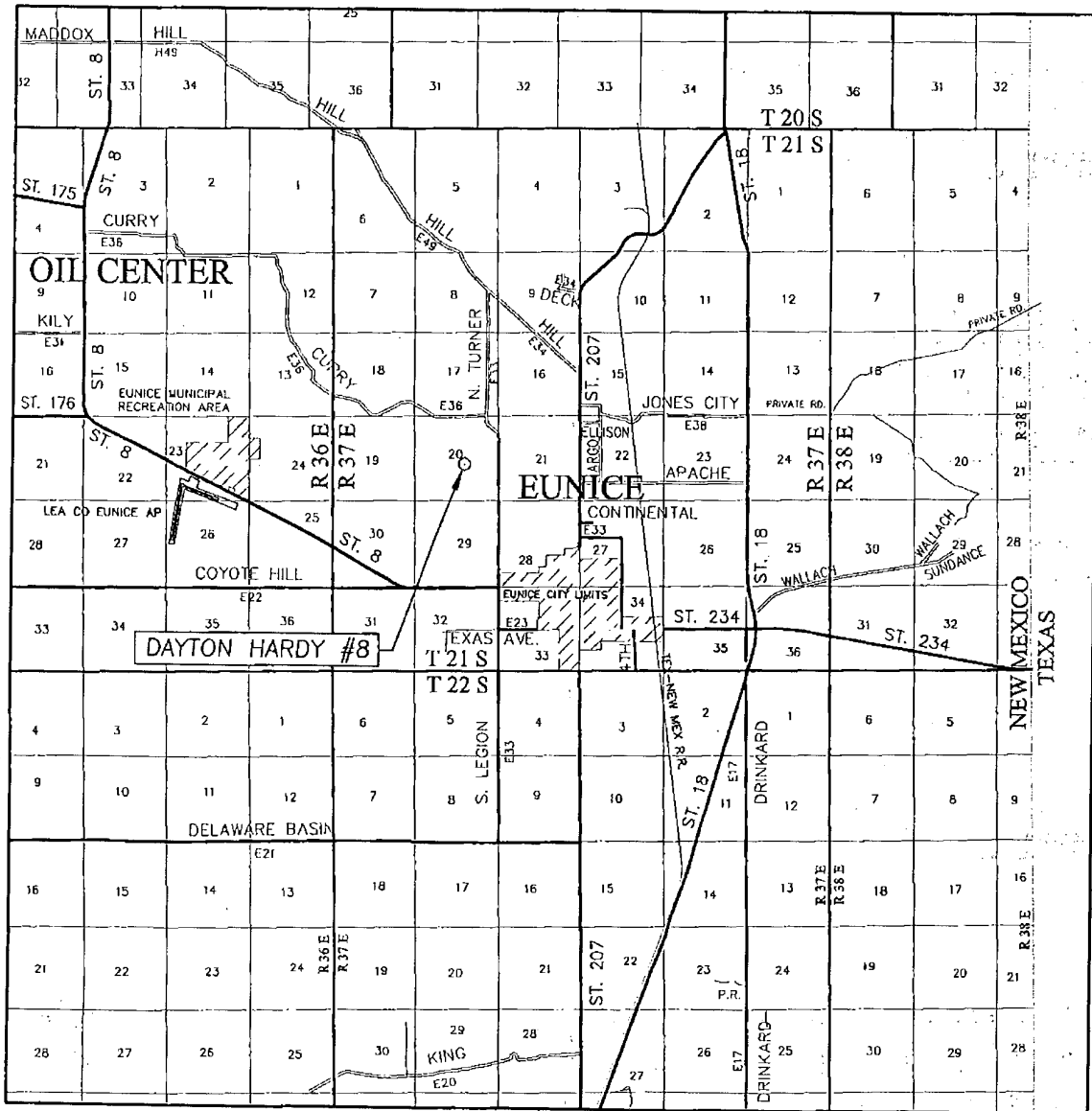
DAYTON HARDY #8 WELL
LOCATED 2310 FEET FROM THE SOUTH LINE
AND 2160 FEET FROM THE EAST LINE OF SECTION 20,
TOWNSHIP 21 SOUTH, RANGE 37 EAST, N.M.P.M.,
LEA COUNTY, NEW MEXICO.



PROVIDING SURVEYING SERVICES
SINCE 1946
JOHN WEST SURVEYING COMPANY
412 N. DAL PASO
HOBBS, N.M. 88240
(575) 393-3117

Survey Date: 12/20/10	Sheet 1 of 1 Sheets
W.O. Number: 10.11.1851	Dr By: DSS
Date: 1/4/11	10111851
	Scale: 1"=100'

VICINITY MAP



SCALE: 1" = 2 MILES

SEC. 20 TWP. 21-S RGE. 37-E

SURVEY N.M.P.M.


COUNTY LEA STATE NEW MEXICO

DESCRIPTION 2310' FSL & 2160' FEL

ELEVATION 3498'

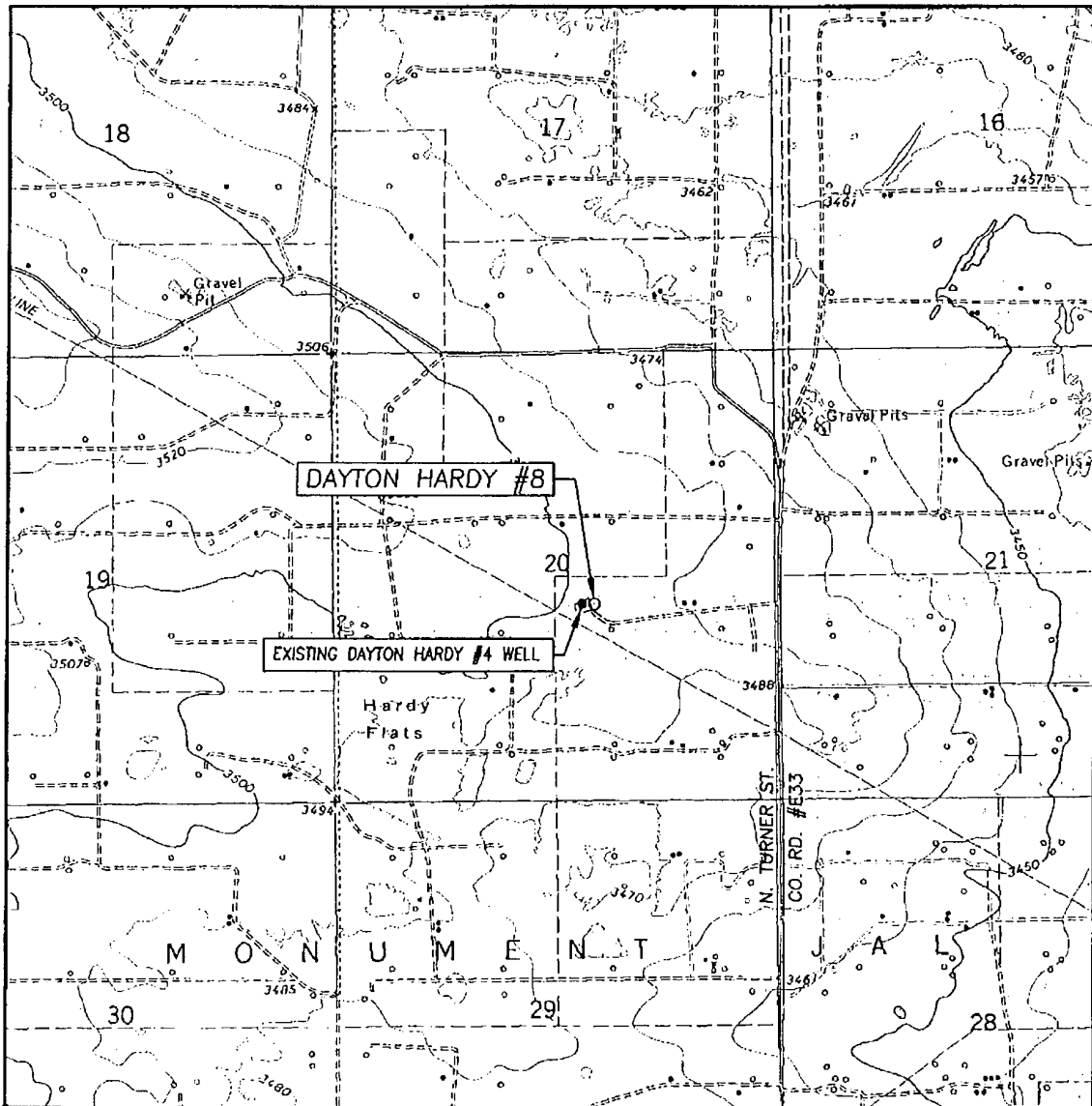
OPERATOR APACHE CORPORATION

LEASE DAYTON HARDY



PROVIDING SURVEYING SERVICES
SINCE 1946
JOHN WEST SURVEYING COMPANY
412 N. DAL PASO
HOBBS, N.M. 88240.
(575) 393-3117

LOCATION VERIFICATION MAP



SCALE: 1" = 2000'

CONTOUR INTERVAL:
EUNICE, N.M. - 10'

SEC. 20 TWP. 21-S RGE. 37-E

SURVEY N.M.P.M.

COUNTY LEA STATE NEW MEXICO

DESCRIPTION 2310' FSL & 2160' FEL

ELEVATION 3498'

OPERATOR APACHE CORPORATION

LEASE DAYTON HARDY

U.S.G.S. TOPOGRAPHIC MAP

EUNICE, N.M.

