

DISTRICT I  
1625 N. FRENCH DR., HOBBS, NM 88240

DISTRICT II  
1301 W. GRAND AVENUE, ARTESIA, NM 88210

DISTRICT III  
1000 RIO BRAZOS RD., AZTEC, NM 87410

DISTRICT IV  
11885 S. ST. FRANCIS DR., SANTA FE, NM 87505

State of New Mexico  
Energy, Minerals and Natural Resources Department

OIL CONSERVATION DIVISION  
11885 SOUTH ST. FRANCIS DR.  
Santa Fe, New Mexico 87505

Form C-102  
Revised October 12, 2005  
Submit to Appropriate District Office  
State Lease - 4 Copies  
Fee Lease - 3 Copies

WELL LOCATION AND ACREAGE DEDICATION PLAT

☐ AMENDED REPORT

API Number <b>30-025-40120</b>	Pool Code <b>72480</b>	Pool Name <b>Blinebry Oil and Gas (Pro Gas)</b>
Property Code <b>306605</b>	Property Name <b>LOU WORTHAN</b>	Well Number <b>28</b>
OGRID No. <b>873</b>	Operator Name <b>APACHE CORPORATION</b>	Elevation <b>3342'</b>

Surface Location

UL or lot No. <b>H</b>	Section <b>11</b>	Township <b>22-S</b>	Range <b>37-E</b>	Lot Ida	Feet from the <b>2310</b>	North/South line <b>NORTH</b>	Feet from the <b>1311</b>	East/West line <b>EAST</b>	County <b>LEA</b>
---------------------------	----------------------	-------------------------	----------------------	---------	------------------------------	----------------------------------	------------------------------	-------------------------------	----------------------

Bottom Hole Location If Different From Surface

UL or lot No.	Section	Township	Range	Lot Ida	Feet from the	North/South line	Feet from the	East/West line	County
Dedicated Acres <b>40</b>	Joint or lafill	Consolidation Code	Order No. <b>NSL-6359-A ; SD-201104-A</b>						

NO ALLOWABLE WILL BE ASSIGNED TO THIS COMPLETION UNTIL ALL INTERESTS HAVE BEEN CONSOLIDATED  
OR A NON-STANDARD UNIT HAS BEEN APPROVED BY THE DIVISION

<p>GEODETIC COORDINATES NAD 27 NME SURFACE LOCATION  Y=513946.9 N X=871673.1 E  LAT.=32.407198° N LONG.=103.129052° W  LAT.=32°24'26" N LONG.=103°07'45" W</p>	<p>2310'</p> <p>1311'</p>	<p><b>OPERATOR CERTIFICATION</b></p> <p>I hereby certify that the information herein is true and complete to the best of my knowledge and belief, and that this organization either owns a working interest or unleased mineral interest in the land including the proposed bottom hole location or has a right to drill this well at this location pursuant to a contract with an owner of such mineral or working interest, or to a voluntary pooling agreement or a compulsory pooling order heretofore entered by the division.</p> <p><i>Sorina L. Flores</i> 4/27/11 Signature Date <b>Sorina L. Flores</b> Printed Name</p> <p><b>SURVEYOR CERTIFICATION</b></p> <p>I hereby certify that the well location shown on this plat was plotted from field notes of actual surveys made by me or under my supervision, and that the same is true and correct to the best of my belief.</p> <p>DECEMBER 21, 2010</p> <p>Date Surveyed DSS Signature &amp; Seal of Professional Surveyor <i>Ronald J. Edson</i> 01/07/2011 10.11.1838 Certificate No. GARY D. EDSON 12641 RONALD J. EDSON 3239</p>
--	---------------------------	--

DISTRICT I  
1625 N. FRENCH DR., HOBBS, NM 88240

DISTRICT II  
1301 W. GRAND AVENUE, ARTESIA, NM 88210

DISTRICT III  
1000 RIO BRAZOS RD., AZTEC, NM 87410

DISTRICT IV  
11885 S. ST. FRANCIS DR., SANTA FE, NM 87505

State of New Mexico  
Energy, Minerals and Natural Resources Department

OIL CONSERVATION DIVISION

11885 SOUTH ST. FRANCIS DR.  
Santa Fe, New Mexico 87505

Form C-102

Revised October 12, 2003  
Submit to Appropriate District Office  
State Lease - 4 Copies  
Fee Lease - 3 Copies

WELL LOCATION AND ACREAGE DEDICATION PLAT

☐ AMENDED REPORT

API Number <b>30-025-40170</b>	Pool Code <b>60240</b>	Pool Name <b>Tubb Oil and Gas (oil)</b>
Property Code <b>306605</b>	Property Name <b>LOU WORTHAN</b>	Well Number <b>28</b>
OGRID No. <b>873</b>	Operator Name <b>APACHE CORPORATION</b>	Elevation <b>3342'</b>

Surface Location

UL or lot No. <b>H</b>	Section <b>11</b>	Township <b>22-S</b>	Range <b>37-E</b>	Lot Idn	Feet from the <b>2310</b>	North/South line <b>NORTH</b>	Feet from the <b>1311</b>	East/West line <b>EAST</b>	County <b>LEA</b>
---------------------------	----------------------	-------------------------	----------------------	---------	------------------------------	----------------------------------	------------------------------	-------------------------------	----------------------

Bottom Hole Location If Different From Surface

UL or lot No.	Section	Township	Range	Lot Idn	Feet from the	North/South line	Feet from the	East/West line	County
Dedicated Acres <b>40</b>		Joint or Infill	Consolidation Code	Order No. <b>NSL-6359-A ; SD - 201104-A</b>					

NO ALLOWABLE WILL BE ASSIGNED TO THIS COMPLETION UNTIL ALL INTERESTS HAVE BEEN CONSOLIDATED  
OR A NON-STANDARD UNIT HAS BEEN APPROVED BY THE DIVISION

<p>GEODETIC COORDINATES NAD 27 NME SURFACE LOCATION</p> <p>Y=513946.9 N X=871673.1 E</p> <p>LAT.=32.407198° N LONG.=103.129052° W</p> <p>LAT.=32°24'26" N LONG.=103°07'45" W</p>	<p>2310</p> <p>1311'</p>	<p><b>OPERATOR CERTIFICATION</b></p> <p>I hereby certify that the information herein is true and complete to the best of my knowledge and belief, and that this organization either owns a working interest or unleased mineral interest in the land including the proposed bottom hole location or has a right to drill this well at this location pursuant to a contract with an owner of such mineral or working interest, or to a voluntary pooling agreement or a compulsory pooling order heretofore entered by the division.</p> <p><i>Sorina L. Flores</i> 4/27/11 Signature Date <b>Sorina L. Flores</b> Printed Name</p> <p><b>SURVEYOR CERTIFICATION</b></p> <p>I hereby certify that the well location shown on this plat was plotted from field notes of actual surveys made by me or under my supervision, and that the same is true and correct to the best of my belief.</p> <p>DECEMBER 21, 2010</p> <p>Date Surveyed OSS Signature &amp; Seal of Professional Surveyor <i>Ronald J. Eidson</i> 01/07/2011 10.11.1838 Certificate No. GARY D. EIDSON 12641 RONALD J. EIDSON 3239</p>
--	--------------------------	---

DISTRICT I  
1625 N. FRENCH DR., HOBBS, NM 88240

DISTRICT II  
1301 W. GRAND AVENUE, ARTESIA, NM 88210

DISTRICT III  
1000 RIO BRAZOS RD., AZTEC, NM 87410

DISTRICT IV  
11885 S. ST. FRANCIS DR., SANTA FE, NM 87505

State of New Mexico  
Energy, Minerals and Natural Resources Department

OIL CONSERVATION DIVISION  
11885 SOUTH ST. FRANCIS DR.  
Santa Fe, New Mexico 87505

Form C-102  
Revised October 12, 2005  
Submit to Appropriate District Office  
State Lease - 4 Copies  
Fee Lease - 3 Copies

WELL LOCATION AND ACREAGE DEDICATION PLAT

☐ AMENDED REPORT

API Number <b>30-025-40120</b>	Pool Code <b>19190</b>	Pool Name <b>Drin Karcl</b>
Property Code <b>306605</b>	Property Name <b>LOU WORTHAN</b>	Well Number <b>28</b>
OGRID No. <b>873</b>	Operator Name <b>APACHE CORPORATION</b>	Elevation <b>3342'</b>

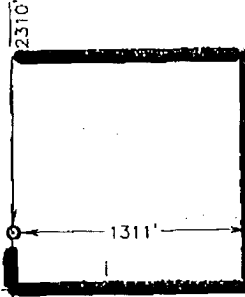
Surface Location

UL or lot No.	Section	Township	Range	Lot Idn	Feet from the	North/South line	Feet from the	East/West line	County
<b>H</b>	<b>11</b>	<b>22-S</b>	<b>37-E</b>		<b>2310</b>	<b>NORTH</b>	<b>1311</b>	<b>EAST</b>	<b>LEA</b>

Bottom Hole Location If Different From Surface

UL or lot No.	Section	Township	Range	Lot Idn	Feet from the	North/South line	Feet from the	East/West line	County
Dedicated Acres <b>40</b>		Joint or Infill		Consolidation Code		Order No. <b>NSL-6359-A ; SD-201104-A</b>			

NO ALLOWABLE WILL BE ASSIGNED TO THIS COMPLETION UNTIL ALL INTERESTS HAVE BEEN CONSOLIDATED  
OR A NON-STANDARD UNIT HAS BEEN APPROVED BY THE DIVISION

<p>GEODETIC COORDINATES NAD 27 NME SURFACE LOCATION  Y=513946.9 N X=871673.1 E  LAT.=32.407198° N LONG.=103.129052° W  LAT.=32°24'26" N LONG.=103°07'45" W</p>		<p><b>OPERATOR CERTIFICATION</b></p> <p>I hereby certify that the information herein is true and complete to the best of my knowledge and belief, and that this organization either owns a working interest or unleased mineral interest in the land including the proposed bottom hole location or has a right to drill this well at this location pursuant to a contract with an owner of such mineral or working interest, or to a voluntary pooling agreement or a compulsory pooling order heretofore entered by the division.</p> <p><i>Sorina L. Flores</i> 4/27/11 Signature Date <b>Sorina L. Flores</b> Printed Name</p>
		<p><b>SURVEYOR CERTIFICATION</b></p> <p>I hereby certify that the well location shown on this plat was plotted from field notes of actual surveys made by me or under my supervision, and that the same is true and correct to the best of my belief.</p> <p>DECEMBER 21, 2010</p> <p>Date Surveyed DSS Signature &amp; Seal of Professional Surveyor <i>Ronald J. Eidson</i> 01/07/2011 10.11.1838 Certificate No. GARY D. EIDSON 12841 RONALD J. EIDSON 3239</p>

DISTRICT I  
1625 N. FRENCH DR., HOBBS, NM 88240

State of New Mexico  
Energy, Minerals and Natural Resources Department

Form C-102

Revised October 12, 2005

Submit to Appropriate District Office

State Lease - 4 Copies

Fee Lease - 3 Copies

DISTRICT II  
1301 W. GRAND AVENUE, ARTESIA, NM 88210

OIL CONSERVATION DIVISION

11885 SOUTH ST. FRANCIS DR.  
Santa Fe, New Mexico 87505

DISTRICT III  
1000 RIO BRAZOS RD., AZTEC, NM 87410

DISTRICT IV  
11885 S. ST. FRANCIS DR., SANTA FE, NM 87505

WELL LOCATION AND ACREAGE DEDICATION PLAT

☐ AMENDED REPORT

API Number <b>30-025-40120</b>	Pool Code <b>62700</b>	Pool Name <b>Wlantz; Abo</b>
Property Code <b>306605</b>	Property Name <b>LOU WORTHAN</b>	Well Number <b>28</b>
GRID No. <b>873</b>	Operator Name <b>APACHE CORPORATION</b>	Elevation <b>3342'</b>

Surface Location

UL or lot No. <b>H</b>	Section <b>11</b>	Township <b>22-S</b>	Range <b>37-E</b>	Lot Idn	Feet from the <b>2310</b>	North/South line <b>NORTH</b>	Feet from the <b>1311</b>	East/West line <b>EAST</b>	County <b>LEA</b>
---------------------------	----------------------	-------------------------	----------------------	---------	------------------------------	----------------------------------	------------------------------	-------------------------------	----------------------

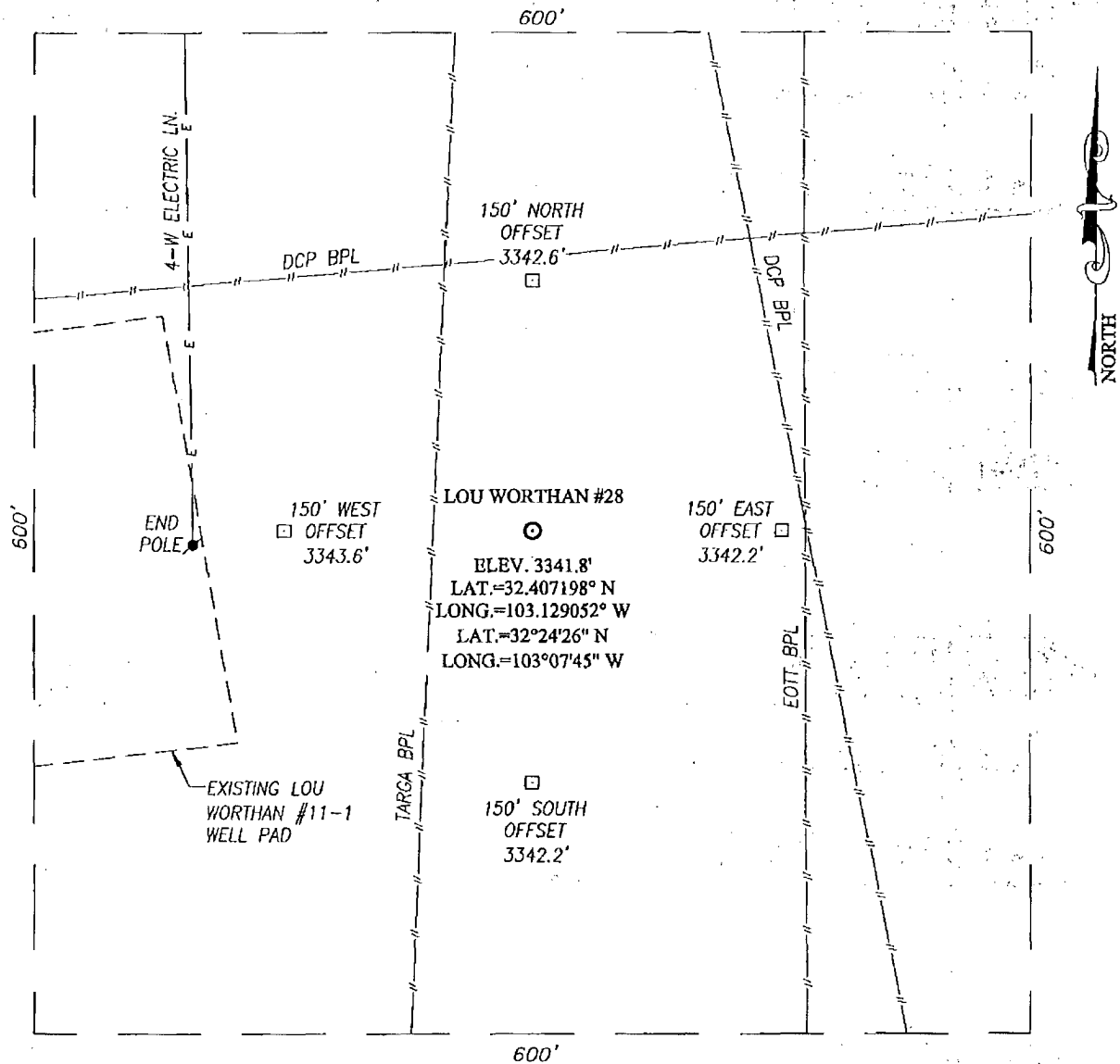
Bottom Hole Location If Different From Surface

UL or lot No.	Section	Township	Range	Lot Idn	Feet from the	North/South line	Feet from the	East/West line	County
Dedicated Acres <b>40</b>		Joint or Infill	Consolidation Code	Order No. <b>NSL-6359-A; SD-201104-A</b>					

NO ALLOWABLE WILL BE ASSIGNED TO THIS COMPLETION UNTIL ALL INTERESTS HAVE BEEN CONSOLIDATED  
OR A NON-STANDARD UNIT HAS BEEN APPROVED BY THE DIVISION

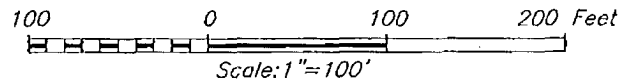
<p>GEODETIC COORDINATES NAD 27 NME SURFACE LOCATION</p> <p>Y=513946.9 N X=871673.1 E</p> <p>LAT.=32.407198" N LONG.=103.129052" W</p> <p>LAT.=32'24'26" N LONG.=103'07'45" W</p>	<p>2310</p> <p>1311'</p> <p>1</p>	<p><b>OPERATOR CERTIFICATION</b></p> <p>I hereby certify that the information herein is true and complete to the best of my knowledge and belief, and that this organization either owns a working interest or unleased mineral interest in the land including the proposed bottom hole location or has a right to drill this well at this location pursuant to a contract with an owner of such mineral or working interest, or to a voluntary pooling agreement or a compulsory pooling order heretofore entered by the division.</p> <p><i>Sorina L. Flores</i> 4/27/11 Signature Date <b>Sorina L. Flores</b> Printed Name</p> <p><b>SURVEYOR CERTIFICATION</b></p> <p>I hereby certify that the well location shown on this plat was plotted from field notes of actual surveys made by me or under my supervision, and that the same is true and correct to the best of my belief.</p> <p>DECEMBER 21, 2010</p> <p>Date Surveyed DSS</p> <p>Signature &amp; Seal of Professional Surveyor <i>Ronald J. Edson</i> 01/07/2011 10.11.1838</p> <p>Certificate No. GARY O. EDSON 12841 RONALD J. EDSON 3239</p>
--	-----------------------------------	--

SECTION 11, TOWNSHIP 22 SOUTH, RANGE 37 EAST, N.M.P.M.,  
LEA COUNTY NEW MEXICO



DIRECTIONS TO LOCATION

FROM THE INTERSECTION ST. HWY. #18 AND CO. RD. #E17 (DRINKARD RD.), GO SOUTHWEST ON ST. HWY. #18 APPROX. 1.8 MILES. TURN LEFT AND GO SOUTHEAST APPROX. 140 FEET. TURN RIGHT AND GO SOUTH APPROX. 800 FEET TO THE EXISTING CHESAPEAKE OPERATING LOU WORTHAN #11-1 WELL. THIS LOCATION STAKE IS APPROX. 340 FEET EAST OF THE EXISTING WELL.




APACHE CORPORATION

LOU WORTHAN #28 WELL  
LOCATED 2310 FEET FROM THE NORTH LINE  
AND 1311 FEET FROM THE EAST LINE OF SECTION 11,  
TOWNSHIP 22 SOUTH, RANGE 37 EAST, N.M.P.M.,  
LEA COUNTY, NEW MEXICO.

Survey Date: 12/21/10	Sheet 1 of 1 Sheets
W.O. Number: 10.11.1838	Dr By: DSS
Date: 1/4/11	10111838
	Scale: 1"=100'

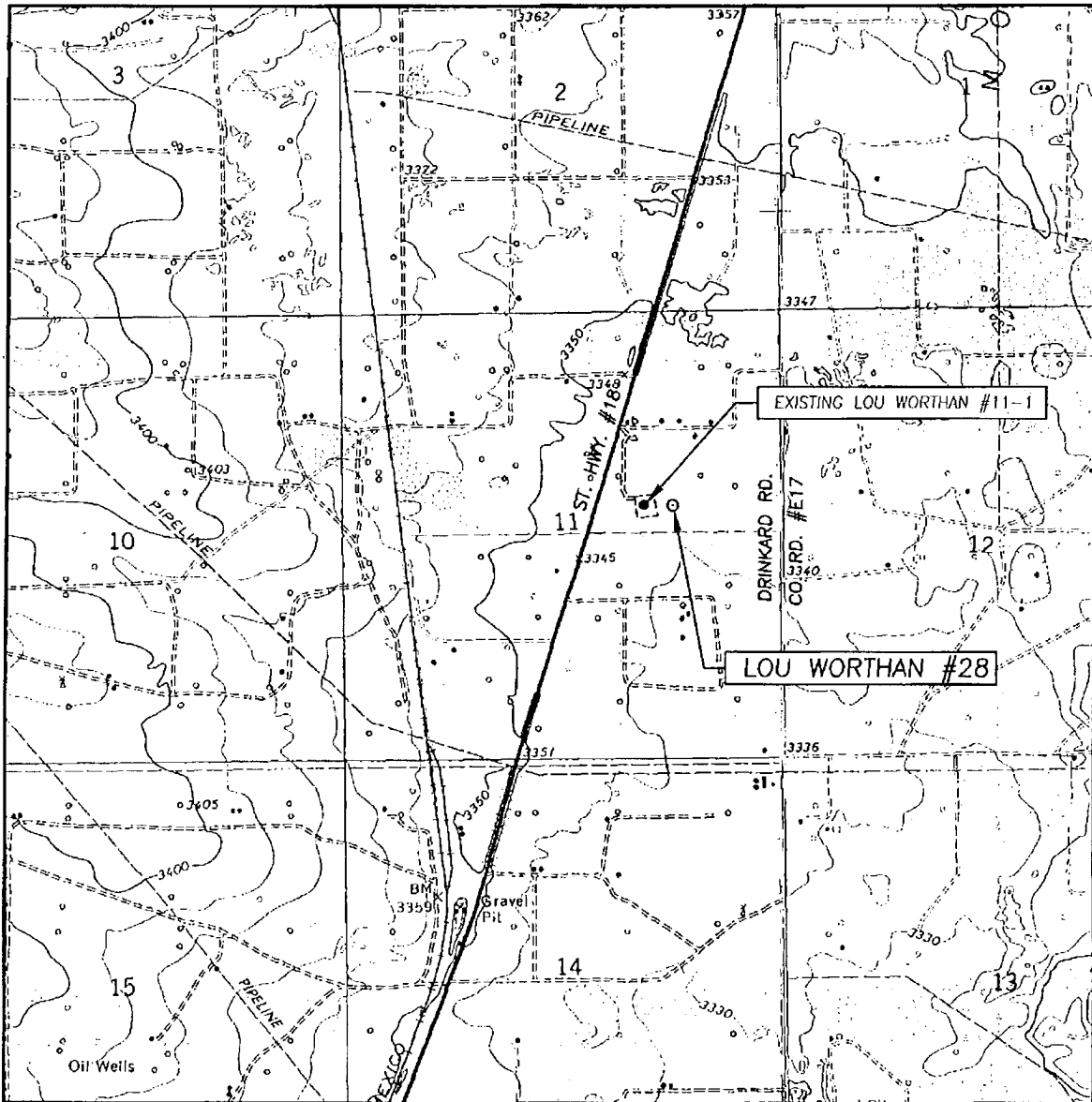
PROVIDING SURVEYING SERVICES  
SINCE 1946  
**JOHN WEST SURVEYING COMPANY**  
412 N. DAL. PASO  
HOBBS, N.M. 88240  
(575) 393-3117

NORTH



PROVIDING SURVEYING SERVICES  
SINCE 1946  
**JOHN WEST SURVEYING COMPANY**  
412 N. DAL PASO  
HOBBS, N.M. 88240  
(575) 393-3117

# LOCATION VERIFICATION MAP



SCALE: 1" = 2000'

CONTOUR INTERVAL:  
EUNICE, N.M. - 10'  
EUNICE NE, N.M. - 5'

SEC. 11 TWP. 22-S RGE. 37-E

SURVEY N.M.P.M.

COUNTY LEA STATE NEW MEXICO

DESCRIPTION 2310' FNL & 1311' FEL


ELEVATION 3342'

OPERATOR APACHE CORPORATION

LEASE LOU WORTHAN

U.S.G.S. TOPOGRAPHIC MAP

EUNICE, N.M.



PROVIDING SURVEYING SERVICES  
SINCE 1946  
**JOHN WEST SURVEYING COMPANY**  
412 N. DAL PASO  
HOBBS, N.M. 88240  
(575) 393-3117