

OIL CONSERVATION DIVISION
2220 South St. Frances Dr.
Santa Fe, NM 87505

☐ AMENDED REPORT

WELL LOCATION AND ACREAGE DEDICATION PLAT

API Number	Pool Code	Pool Name
30-025-39849	44500	Maljamar; YESO, WEST <i>KE</i>
Property Code	Property Name	Well Number
3823838251	AQUAMARINE STATE	1
OGRID No.	Operator Name	Elevation
217817	CONOCOPHILLIPS	4014'

Surface Location

UL or lot No.	Section	Township	Range	Lot Idn	Feet from the	North/South line	Feet from the	East/West line	County
P	16	17 S	32 E		343	SOUTH	432	EAST	LEA

Bottom Hole Location If Different From Surface

UL or lot No.	Section	Township	Range	Lot Idn	Feet from the	North/South line	Feet from the	East/West line	County
Dedicated Acres	Joint or Infill	Consolidation Code	Order No.						

NO ALLOWABLE WILL BE ASSIGNED TO THIS COMPLETION UNTIL ALL INTERESTS HAVE BEEN CONSOLIDATED OR A NON-STANDARD UNIT HAS BEEN APPROVED BY THE DIVISION

NOTE:

1) Plane Coordinates shown hereon are Transverse Mercator Grid and Conform to the "New Mexico Coordinate System", New Mexico East Zone, North American Datum of 1927. Distances shown hereon are mean horizontal surface values.

Plane Coordinate
X = 674,960.0
Y = 665,479.4

4017.7'

4016.4'

4010.4'

4008.2'

432'

OPERATOR CERTIFICATION

I hereby certify the the information contained herein is true and complete to the best of my knowledge and belief, and that this organization either owns a working interest or undivided mineral interest in the land including the proposed bottom hole location or has a right to drill this well at this location pursuant to a contract with an owner of such a mineral or working interest, or to a voluntary pooling agreement or a compulsory pooling order heretofore entered by the division.

B. J. [Signature]
Signature

4/15/11
Date

Brian D. Mairano
Printed Name

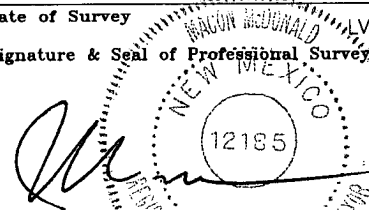
SURVEYOR CERTIFICATION

I hereby certify that the well location shown on this plat was plotted from field notes of actual surveys made by me or under my supervision and that the same is true and correct to the best of my belief.

July 2, 2010

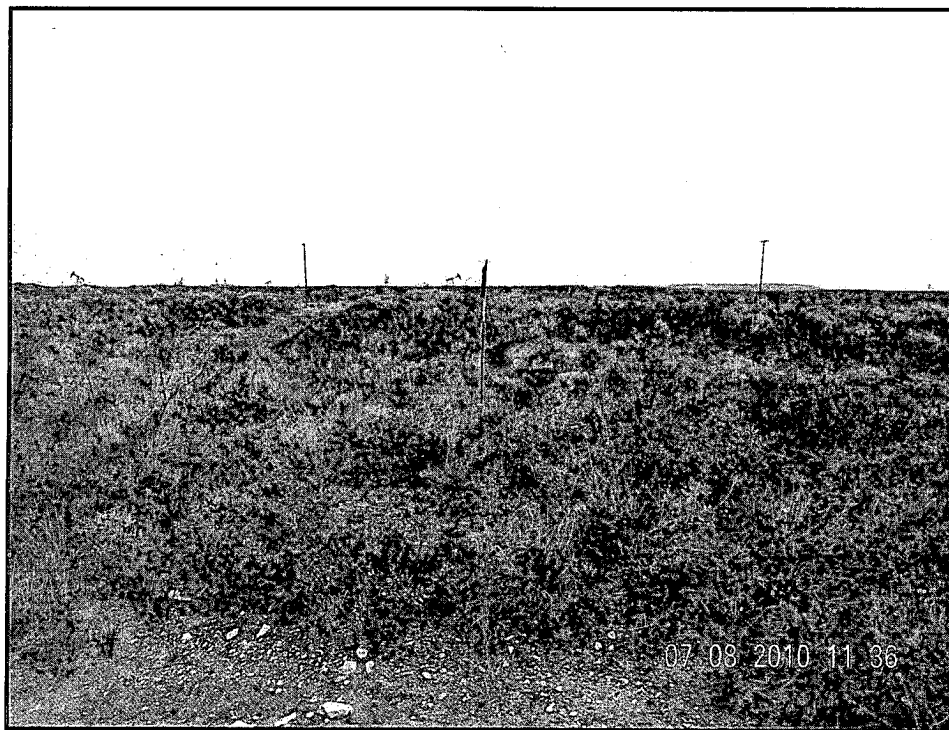
Date of Survey

Signature & Seal of Professional Surveyor

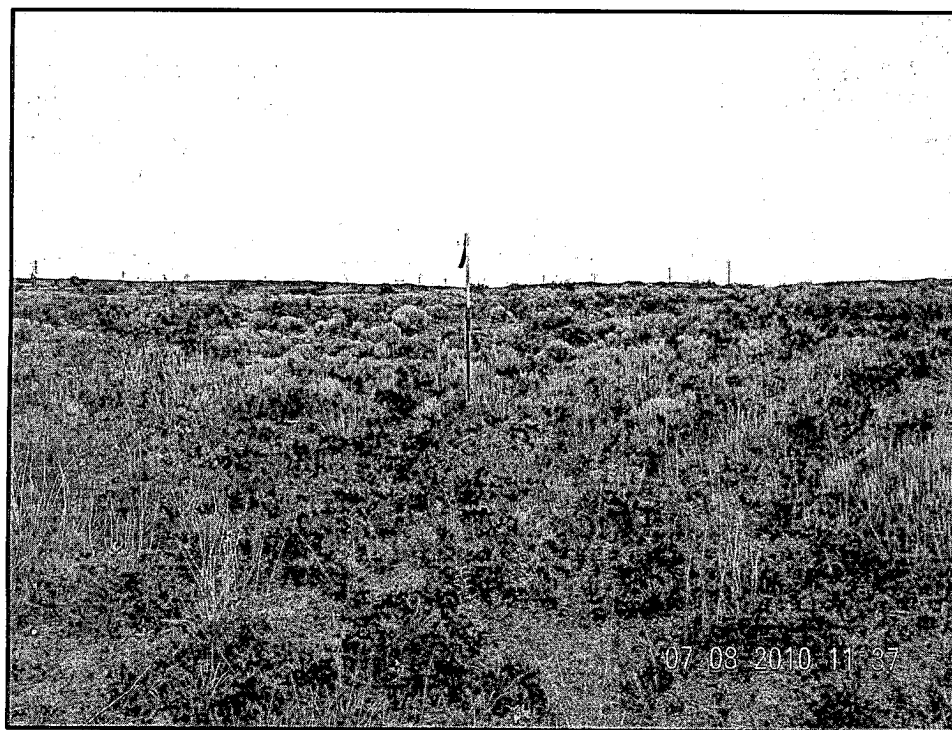


W.O. Num 2010-0555

Certificate No. MACON McDONALD 12185



NORTHERLY VIEW TO LOCATION STAKE



WESTERLY VIEW TO LOCATION STAKE

ConocoPhillips

AQUAMARINE STATE #1

Located 343' FSL & 432' FEL, Section 16
Township 17 South, Range 32 East, N.M.P.M.
Lea County, New Mexico



110 W. LOUISIANA, STE. 110
MIDLAND TEXAS, 79701
(432) 687-0865 - (432) 687-0868 FAX

Drawn By: KHY

Date: July 16, 2010

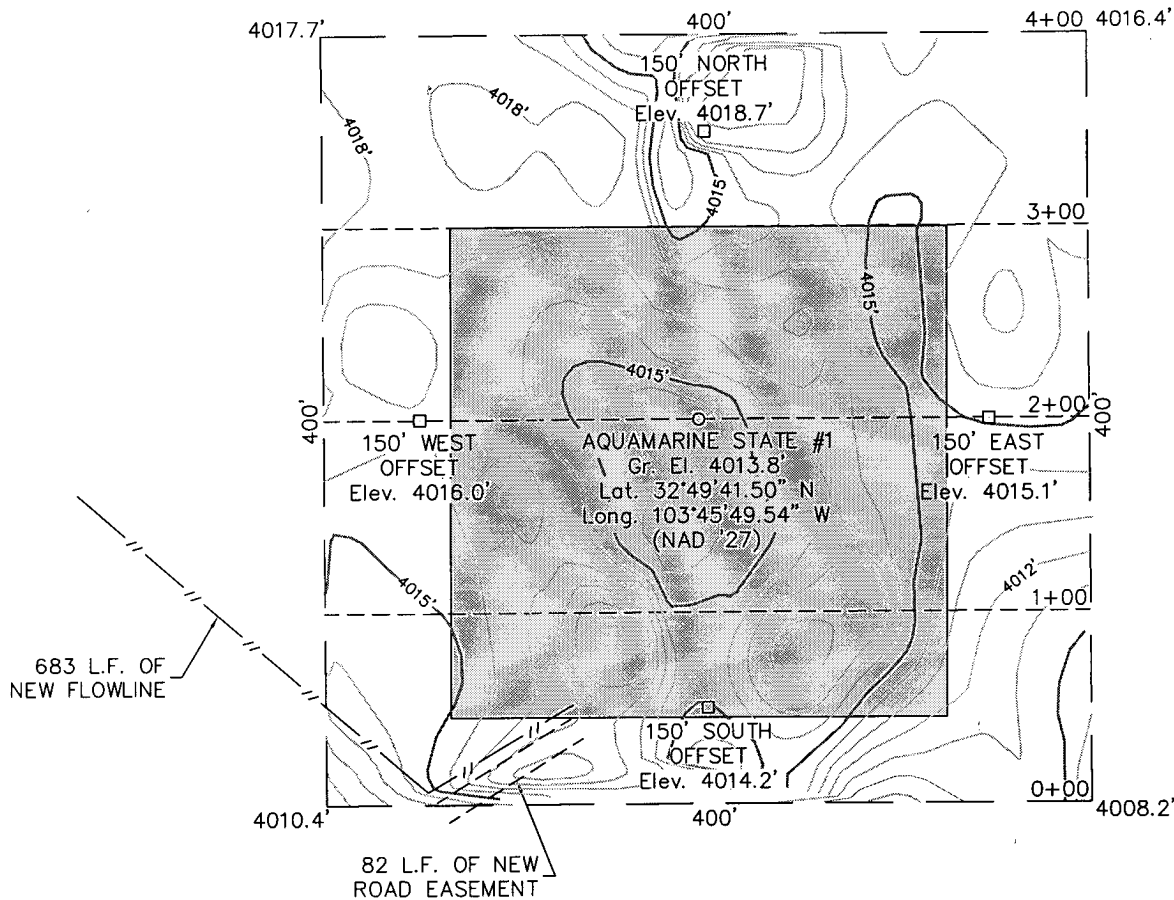
SECTION 16, TOWNSHIP 17 SOUTH, RANGE 32 EAST, N.M.P.M.

LEA COUNTY

NEW MEXICO

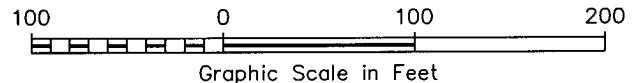
L-2010-0555-A

THIS IS NOT A BOUNDARY SURVEY
Apparent property corners and property lines, if shown,
are for information only.



DRIVING DIRECTIONS

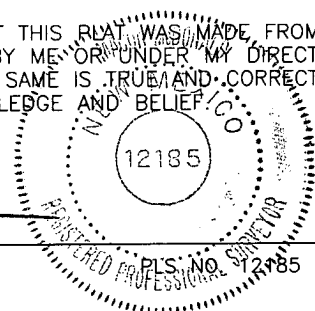
FROM THE INTERSECTION OF STATE HIGHWAY 82 AND COUNTY ROAD 126 IN MALJAMAR, NM GO SOUTH ON SAID COUNTY ROAD 126 2.0 MILES TO A LEASE ROAD ON WEST (RIGHT) SIDE OF ROAD, THEN GO WEST 0.1 MILE, THEN GO NORTHWEST (RIGHT) 0.1 MILE TO A POINT BEING APPROXIMATELY 300 FEET WEST OF THE PROPOSED LOCATION.



I HEREBY CERTIFY THAT THIS MAP WAS MADE FROM AN ACTUAL SURVEY MADE BY ME OR UNDER MY DIRECT SUPERVISION AND THAT THE SAME IS TRUE AND CORRECT TO THE BEST OF MY KNOWLEDGE AND BELIEF.

[Signature]

MACON McDONALD



ConocoPhillips

Topographic Map

AQUAMARINE STATE #1

Located 343' FSL & 432' FEL, Section 16
Township 17 South, Range 32 East, N.M.P.M.
Lea County, New Mexico

Drawn By: LVA	Date: July 16, 2010
Scale: 1" = 100'	Field Book: 489 / 19-20
Sheet 1 of 3	Quadrangle: Maljamar
W.O. No: 2010-0555	Dwg. No.: L-2010-0555-A

WEST
COMPANY
of Midland, Inc.

110 W. LOUISIANA, STE. 110
MIDLAND TEXAS, 79701
(432) 687-0865 - (432) 687-0868 FAX

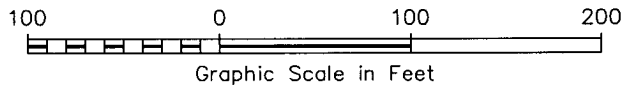
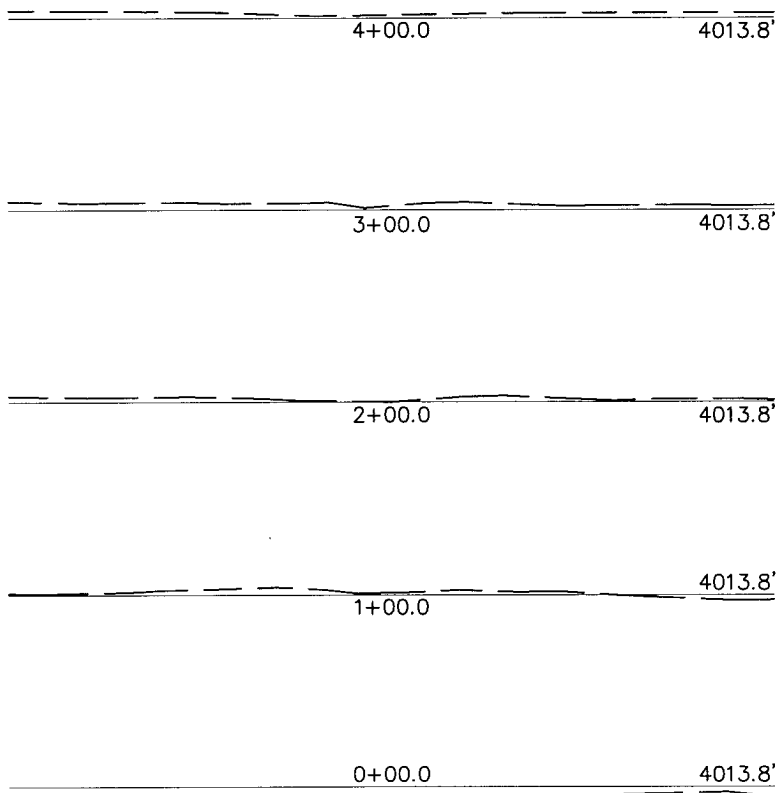
SECTION 16, TOWNSHIP 17 SOUTH, RANGE 32 EAST, N.M.P.M.

LEA COUNTY

NEW MEXICO

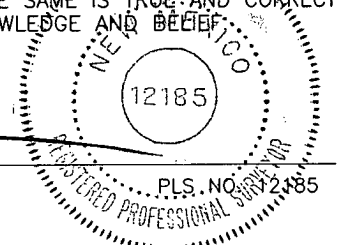
L-2010-0555-B

THIS IS NOT A BOUNDARY SURVEY
Apparent property corners and property lines, if shown,
are for information only.



I HEREBY CERTIFY THAT THIS PLAT WAS MADE FROM
AN ACTUAL SURVEY MADE BY ME OR UNDER MY DIRECT
SUPERVISION AND THAT THE SAME IS TRUE AND CORRECT
TO THE BEST OF MY KNOWLEDGE AND BELIEF.

MACON McDONALD



PLS. NO. 2185

WEST
COMPANY
of Midland, Inc.

110 W. LOUISIANA, STE. 110
MIDLAND TEXAS, 79701
(432) 687-0865 - (432) 687-0868 FAX

Topographic Map

AQUAMARINE STATE #1

Located 343' FSL & 432' FEL, Section 16
Township 17 South, Range 32 East, N.M.P.M.
Lea County, New Mexico

Drawn By: LVA

Date: July 16, 2010

Scale: 1" = 100'

Field Book: 489 / 19-20

Sheet 2 of 3

Quadrangle: Maljamar

W.O. No: 2010-0555

Dwg. No.: L-2010-0555-B

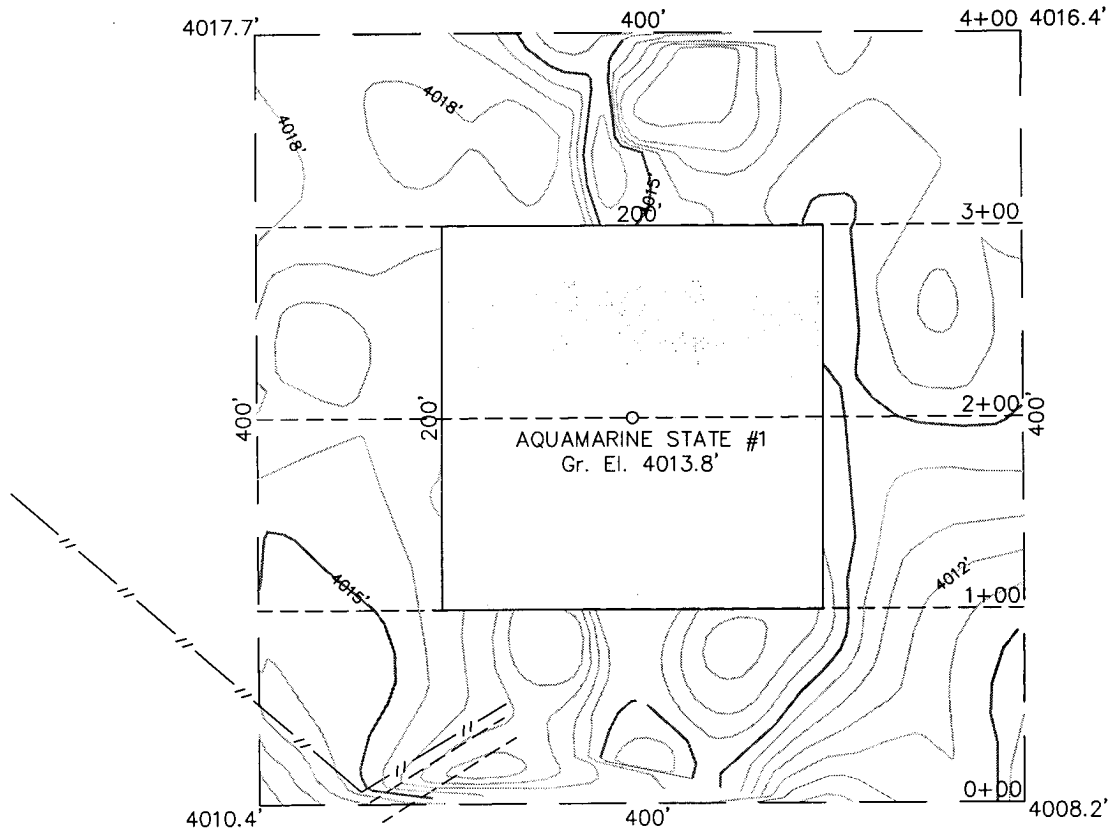
SECTION 16, TOWNSHIP 17 SOUTH, RANGE 32 EAST, N.M.P.M.

LEA COUNTY

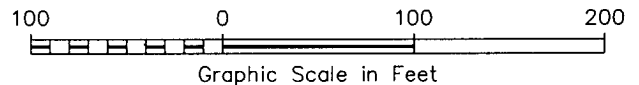
NEW MEXICO

L-2010-0555-C

THIS IS NOT A BOUNDARY SURVEY
Apparent property corners and property lines, if shown,
are for information only.

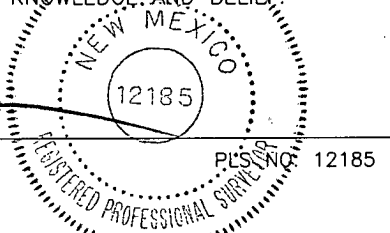


INTERIM RECLAMATION



I HEREBY CERTIFY THAT THIS PLAT WAS MADE FROM
AN ACTUAL SURVEY MADE BY ME OR, UNDER MY DIRECT
SUPERVISION AND THAT THE SAME IS TRUE AND CORRECT
TO THE BEST OF MY KNOWLEDGE AND BELIEF.

MACON McDONALD



110' W. LOUISIANA, STE. 110
MIDLAND TEXAS, 79701
(432) 687-0865 - (432) 687-0868 FAX

ConocoPhillips

Topographic Map

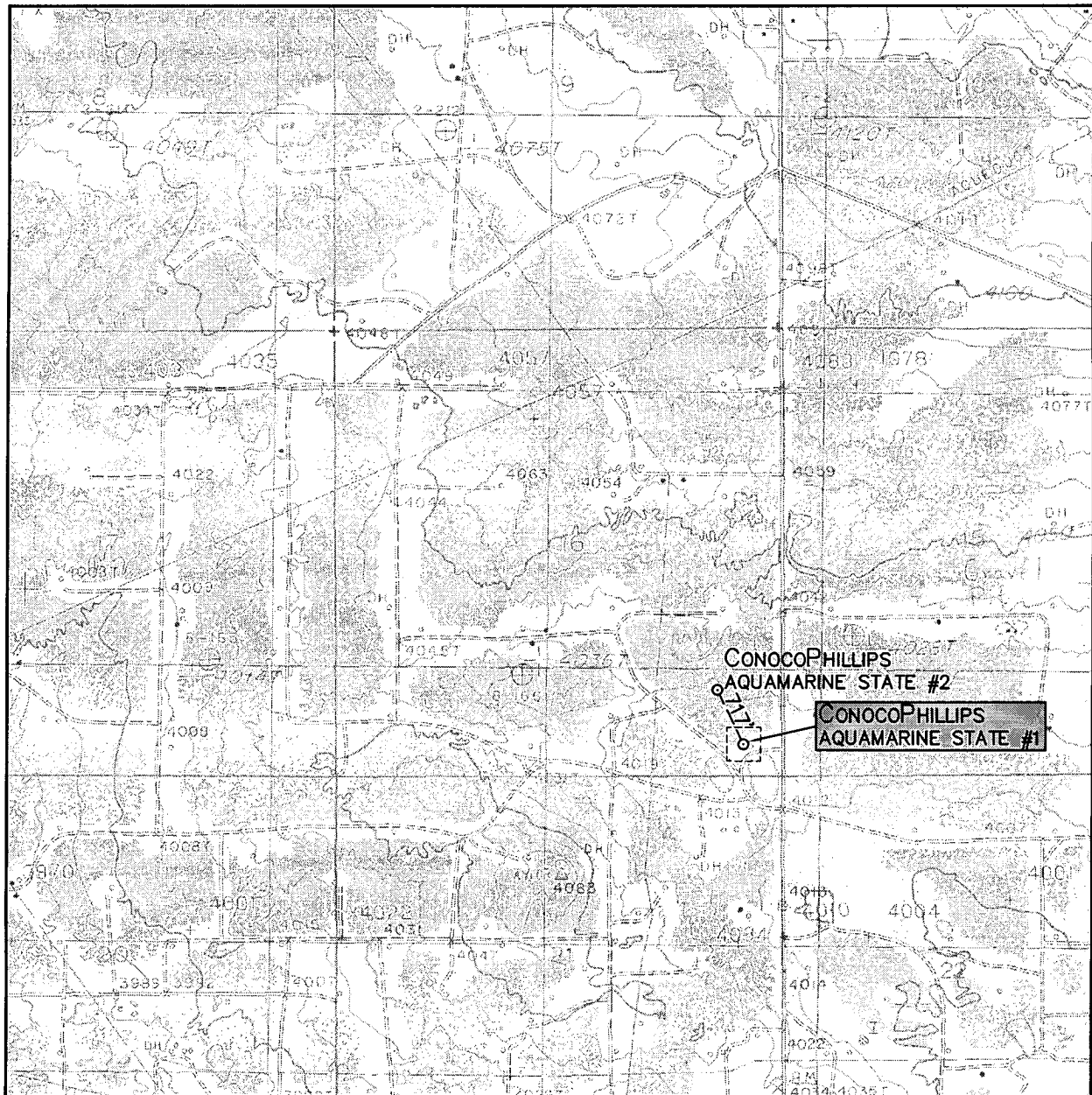
AQUAMARINE STATE #1

Located 343' FSL & 432' FEL, Section 16
Township 17 South, Range 32 East, N.M.P.M.
Lea County, New Mexico

Drawn By: KHY	Date: July 16, 2010
Scale: 1" = 100'	Field Book: 489 / 19-20
Sheet 3 of 3	Quadrangle: Maljamar
W.O. No: 2010-0555	Dwg. No.: L-2010-0555-C

WEST
COMPANY
of Midland, Inc.

LOCATION VERIFICATION MAP



SCALE: 1" = 2000'

CONTOUR INTERVAL:
MALJAMAR - 5'

SEC. 16 TWP. 17-S RGE. 32-E

SURVEY N.M.P.M.

COUNTY LEA

DESCRIPTION 343' FSL & 432' FEL

ELEVATION 4014'

OPERATOR CONOCOPHILLIPS

LEASE AQUAMARINE STATE

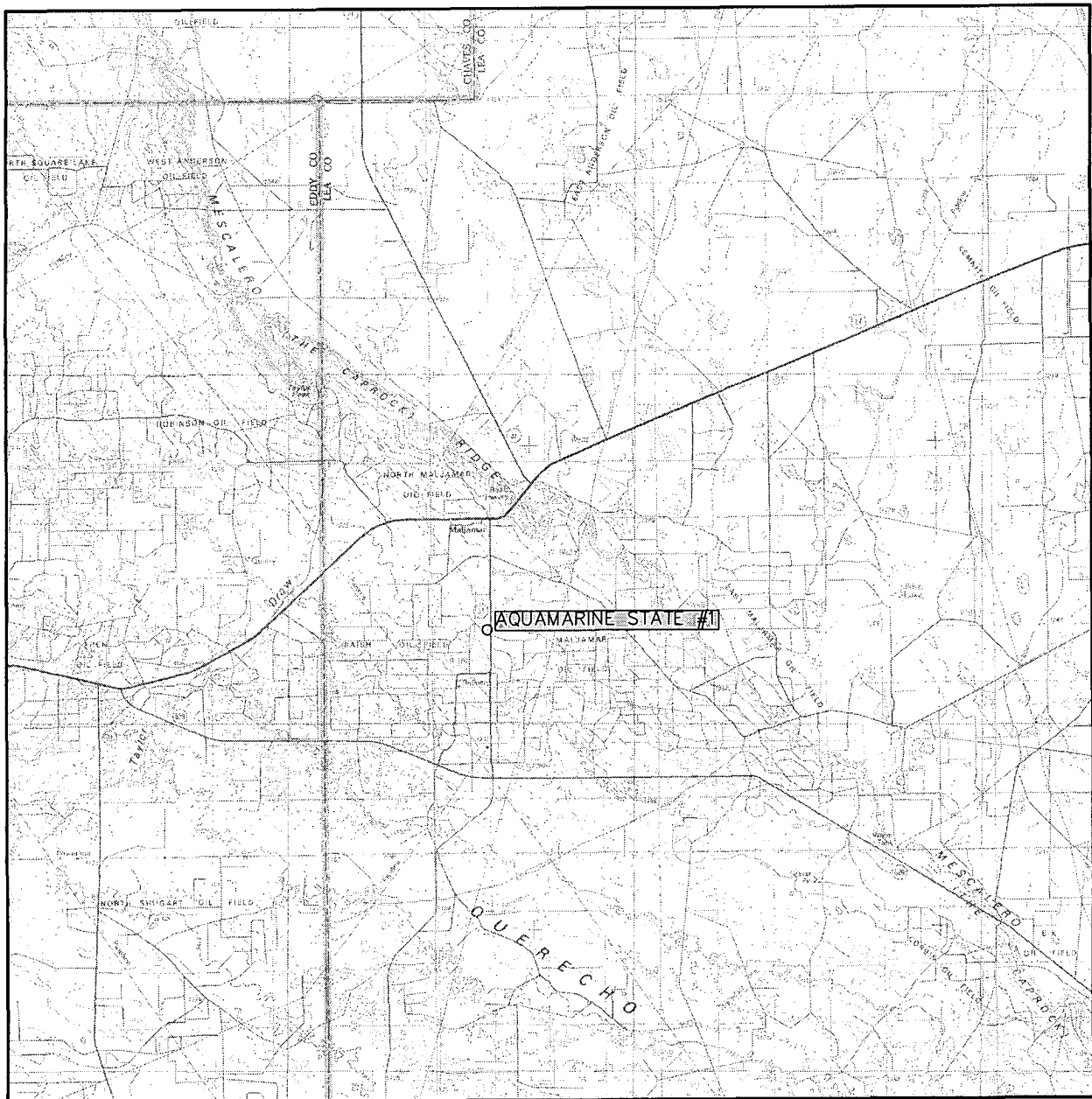
U.S.G.S. TOPOGRAPHIC MAP
MALJAMAR



**WEST
COMPANY**
of Midland, Inc.

110 W. LOUISIANA, STE. 110
MIDLAND TEXAS, 79701
(432) 687-0865 - (432) 687-0868 FAX

VICINITY MAP



SCALE: 1" = 3 MILES

SEC. 16 TWP. 17-S RGE. 32-E

SURVEY N.M.P.M.

COUNTY LEA

DESCRIPTION 343' FSL & 432' FEL

ELEVATION 4014'

OPERATOR CONOCO PHILLIPS

LEASE AQUAMARINE STATE



**WEST
COMPANY**
of Midland, Inc.

110 W. LOUISIANA, STE. 110
MIDLAND TEXAS, 79701
(432) 687-0865 - (432) 687-0868 FAX