

HOBBS OCU  
MAY 04 2011

RECEIVED

UNITED STATES  
DEPARTMENT OF THE INTERIOR  
BUREAU OF LAND MANAGEMENT

RECEIVED

operation  
FORM APPROVED  
OMB NO. 1004-0135  
Expires: July 31, 2010

**SUNDRY NOTICES AND REPORTS ON WELLS**  
Do not use this form for proposals to drill or to re-enter abandoned well. Use form 3160-3 (APD) for such proposals.

APR 25 2011

5. Lease Serial No.  
NMNM109434

6. If Indian, Allottee or Tribe Name

7. If Unit or CA/Agreement, Name and/or No.  
NMNM116169X

8. Well Name and No.  
TRINITY BURRUS ABO UNIT 20

9. API Well No.  
30-025-36566-00-S1

10. Field and Pool, or Exploratory  
TRINITY WOLFCAMP

11. County or Parish, and State  
LEA COUNTY, NM

SUBMIT IN TRIPLICATE - Other instructions on reverse side.

1. Type of Well  
☒ Oil Well ☐ Gas Well ☐ Other

2. Name of Operator  
CHESAPEAKE OPERATING INC  
Contact: LINDA GOOD  
E-Mail: linda.good@chk.com

3a. Address  
OKLAHOMA CITY, OK 73154-0496

3b. Phone No. (include area code)  
Ph: 405-935-4275

4. Location of Well (Footage, Sec., T., R., M., or Survey Description)  
Sec 23 T12S R38E SWSE 990FSL 2170FEL  
33,259703 N Lat, 103.066371 W Lon

12. CHECK APPROPRIATE BOX(ES) TO INDICATE NATURE OF NOTICE, REPORT, OR OTHER DATA

TYPE OF SUBMISSION	TYPE OF ACTION
<input type="checkbox"/> Notice of Intent	<input type="checkbox"/> Acidize
<input checked="" type="checkbox"/> Subsequent Report	<input type="checkbox"/> Deepen
<input type="checkbox"/> Final Abandonment Notice	<input type="checkbox"/> Alter Casing
	<input type="checkbox"/> Fracture Treat
	<input checked="" type="checkbox"/> Casing Repair
	<input type="checkbox"/> New Construction
	<input type="checkbox"/> Change Plans
	<input type="checkbox"/> Plug and Abandon
	<input type="checkbox"/> Convert to Injection
	<input type="checkbox"/> Plug Back
	<input type="checkbox"/> Production (Start/Resume)
	<input type="checkbox"/> Reclamation
	<input type="checkbox"/> Recomplete
	<input type="checkbox"/> Temporarily Abandon
	<input type="checkbox"/> Water Shut-Off
	<input type="checkbox"/> Well Integrity
	<input type="checkbox"/> Other
	<input type="checkbox"/> Water Disposal

13. Describe Proposed or Completed Operation (clearly state all pertinent details, including estimated starting date of any proposed work and approximate duration thereof. If the proposal is to deepen directionally or recompleat horizontally, give subsurface locations and measured and true vertical depths of all pertinent markers and zones. Attach the Bond under which the work will be performed or provide the Bond No. on file with BLM/BIA. Required subsequent reports shall be filed within 30 days following completion of the involved operations. If the operation results in a multiple completion or recompleat in a new interval, a Form 3160-4 shall be filed once testing has been completed. Final Abandonment Notices shall be filed only after all requirements, including reclamation, have been completed, and the operator has determined that the site is ready for final inspection.)

ATTENTION: JIM AMOS

CHESAPEAKES PLANS WERE TO TEST THE PACKER ON THIS WELL AND FOUND A CASING LEAK. CONTACTED JIM AMOS WITH THE BLM ON 3/9/2011 AND RECEIVED VERBAL APPROVAL TO START WORKING TO REPAIR THE LEAK.

SUMMARY OF CASING LEAK REPAIR AND MIT CHART ATTACHED.

(CHK PN 891086)

14. Thereby certify that the foregoing is true and correct.

Electronic Submission #100412 verified by the BLM Well Information System  
For CHESAPEAKE OPERATING INC, sent to the Hobbs  
Committed to AFMSS for processing by KUAT SIMMONS on 04/14/2011 (11KM80611SE)

Name (Printed/Typed) LINDA GOOD Title SR. REGULATORY COMPLIANCE SPEC

Signature (Electronic Submission) Date 04/13/2011

THIS SPACE FOR FEDERAL OR STATE OFFICE USE

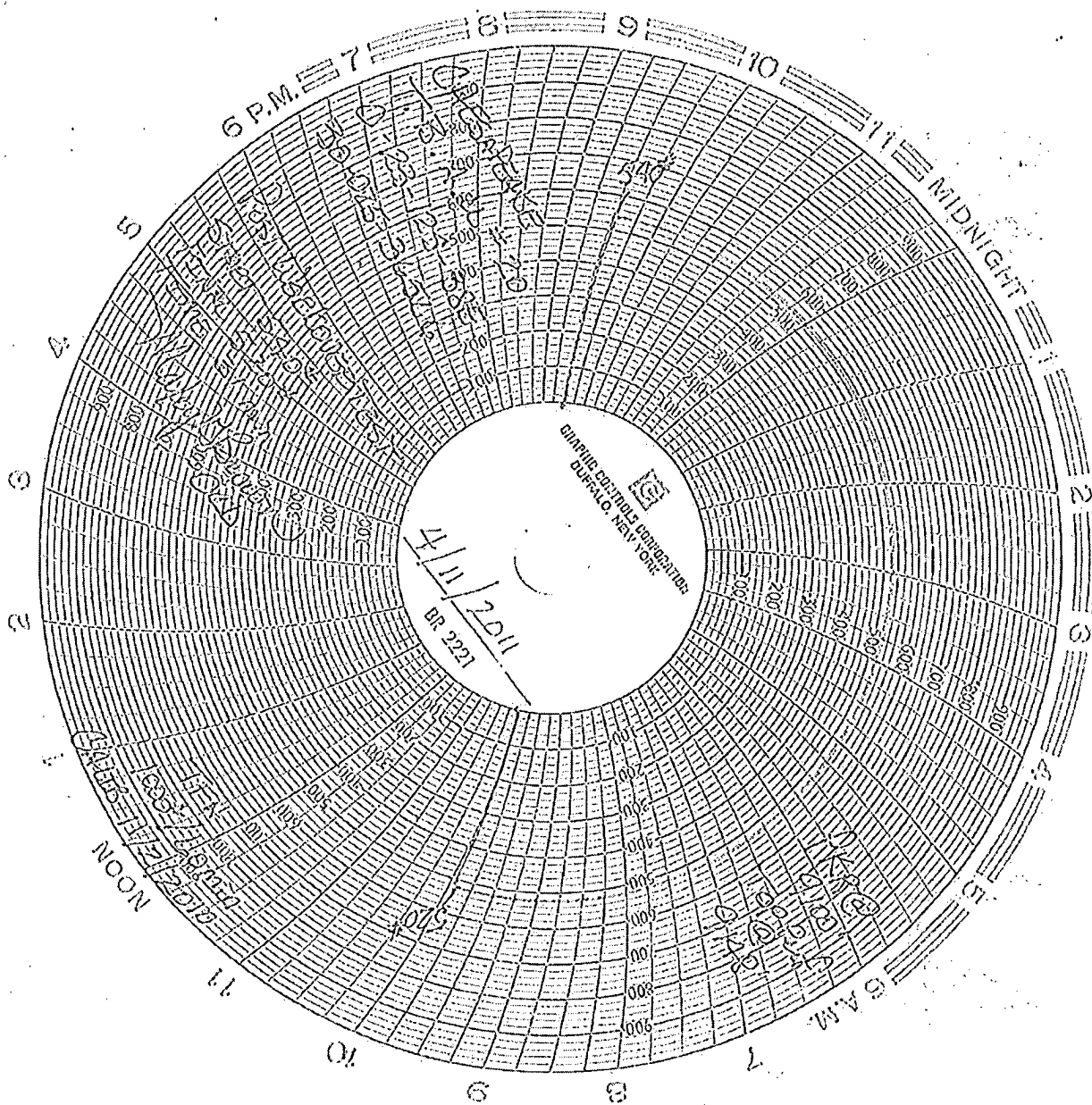
Approved By **ACCEPTED** JAMES A AMOS  
Title SUPERVISOR EPS Date 04/18/2011

Conditions of approval, if any, are attached. Approval of this notice does not warrant or certify that the applicant holds legal or equitable title to those rights in the subject lease which would entitle the applicant to conduct operations thereon.

Office Hobbs *La* MAY 04 2011

Title 18 U.S.C. Section 1001 and Title 43 U.S.C. Section 1212, make it a crime for any person knowingly and willfully to make to any department or agency of the United States any false, fictitious or fraudulent statements or representations as to any matter within its jurisdiction.

\*\* BLM REVISED \*\* BLM REVISED \*\* BLM REVISED \*\* BLM REVISED \*\* BLM REVISED \*\*



**TBAU 20**  
**CASING LEAK REPAIR SUMMARY**

3/10/2011 TIH W/ 2 7/8" TBG AND BHA. SET RBP @ 9115'. RELEASE ON/OFF TOOL AND PU TO 9008. COULD NOT SET PKR. PU TO 8682' AND 7393'. STILL COULD NOT GET PKR TO SET. TOOH W/TBG. FOUND PIN STRIPPED OUT OF BOX. LEFT PKR AND 8 JTS OF TBG IN THE HOLE.

3/11/2011 PU 4 5/8" OVERSHOT W/ A 3 21/32 GRAPPLE, 3 1/2" BUMPER SUB, 3 1/2" JARS, 6-3 1/2" COLLARS, 3 1/2" ACCELERATOR, AND TIH W/2 7/8" TBG. TAG FISH @ 8845'. LATCH ON FISH AND RELEASE ON/OFF TOOL. TOOH AND LAY DOWN BHA. RETRIEVED 8 JTS OF TBG AND PKR.

3/14/2011 PU 4.650 HD WEATHERFORD PKR AND TIH TO 9000'. TEST RBP TO 1000 PSI. NO LEAK OFF. PU TO 7398'. TEST TO 1000 PSI. NO LEAK OFF. RETRIEVE RBP AND SET AT 7398'. PU TO 7270' AND SET PKR. TEST TO 550 PSI STAGING TO 1000 PSI. LOST 200 PSI IN 15 MIN IN AT 1000 PSI. TEST ANNULUS TO 1000 PSI. NO LEAK OFF.

3/15/2011 LEAK ISOLATED BETWEEN 7270 AND 7398'. (TUBB PERFS.) MIRU CUDD ACID SER AND ACIDIZE TUBB FORMATION FROM 7314-7364' W/ 500 GAL OF 15% HCL. SPOT 500 GALS @ 7366'. PU TO 7270' AND REVERSE SPOT HCL AND SET PKR. ESTABLISH INJECTION RATE @ 2 BPM @ 2310 PSI. PUMP ACID AWAY AND OVER FLUSH 30 BBLS. AVG RATE: 2 BPM AVG PRESS 2600 PSI. SWI 1 HR. SITP 2000 PSI. BWD. RECOVERED 24 BBLS OF WATER. LTR: 83 BBLS. SWI.

3/16/2011 TIH AND LATCH ON RBP. PU TO 5930' AND SET RBP. PU TO 5807' AND SET PKR. TEST SAN ANDRES PERFS FROM 5864-5888' AT 600 PSI FOR 30 MINS. NO LEAK OFF. RETRIEVE RBP AND TOOH. PU 4.50 CBP AND TIH TO 7466'. SET CBP AND TOOH W/TBG. SWI.

3/17/2011 PU 4.50 WEATHERFORD CMT RET AND TIH TO 7207" BREAK CIRCU. SET RETAINER. MIRU CHIEF PUMPING SER AND SQUEEZE TUBB PERFS FROM 7317-7364' W/100 SKS ( 21 BBLS ) OF CLASS "H" CMT W/5% FLUID LOSS @ 15.6 PPG W/ A 1.18 YEILD. ESTABLISH INJECTION RATE @ 1/2 BPM. PUMP 11.5 BBLS OF CMT INTO FORMATION @ 1/2 BPM FROM 1200 PSI TO 2100 PSI. ISIP 1950 PSI. STING OUT OF RETAINER AND REVERSE OUT 5 BBLS OF CMT. RD CMT SER. TOOH W/TBG AND BHA. SWI.

3/18/2011 PU 4 3/4" BAKER ATLAS BIT, 6-3 1/2" DRILL COLLARS AND TIH W/222 JTS OF 2 7/8" TBG. TAG AT 7167'. PU TO 7136'. SW. SD. WOC.

3/21/2011 PU SWEVIL AND TAG @ 7167'. DRILL OUT 40' OF CMT. TAG CMT RETAINER AND DRILL OUT @ 7207'. CONT DRILLING OUT HARD CMT TO 7294'. CIRCU WELL CLEAN.

3/22/2011 TAG @ 7294'. CONT DRILLING OUT CMT. FELL OUT @ 7350'. CIRCU CLEAN. TEST SQUEEZE TO 550 PSI. HAD A PRESSURE INCREASE OF 200 PSI IN 10 MINS. BWD. MONITOR PRESSURE HAD A INCREASE TO 200 PSI IN 10 MINS.

**TBAU 20**  
**CASING LEAK REPAIR SUMMARY**

BWD. FLOW BACK TO TANK W/A STEADY 1" STREAM. PU TO 7294'. SWI. SD DUE TO HIGH WINDS.

3/23/2011 TOO H W/TBG AND LAY DOWN BHA. PU 4.625 ARROWSET PKR AND TIH TO 7398'. TEST CBP TO 1600 PSI. NO LEAK OFF OR GAIN. PU TO 7270' AND SET PKR. PRESSURE UP TUBB PERFS FROM 7314-64" TO 500 PSI. LOST 50 PSI IN 10 MINS. PRESSURE TO 600 PSI. LOST 150 PSI IN 10 MINS. PRESSURE UP TO 650 PSI. LOST 200 PSI IN 10 MINS. BWD TO 50 PSI. PRESSURE INCREASED TO 490 PSI IN 30 MINS. RELEASE PKR AND TOO H.

3/24/2011 TIH W/2 7/8" TBG OPEN ENDED TO 7367'. MIRU CHIEF PUMPING SER. PUMP 60 SKS (12 BBLs) OF CLASS "H" @ 15.6 PPG W/A 1.18 YIELD @ 7367' FOR A BALANCED SPOT ACROSS TUBB PERFS 7317-64'. PU TO 6726" AND REVERSE OUT. PRESSURE UP ON ANNULUS TO 650 PSI FOR 15 MINS. NO LEAK OFF. INCREASE PRESSURE TO 750 PSI FOR 15 MINS. NO LEAK OFF. INCREASE PRESSURE TO 850 PSI FOR 30 MINS. NO LEAK OFF. INCREASE PRESSURE TO 1000 PSI. NO LEAK OFF. SWI W/1000 PSI. SD. WOC.

3/25/2011 WAITING ON CEMENT.

3/28/2011 TOO H W/TBG. PU 4 3/4" BAKER ATLAS BIT, 6-3 1/2" DRILL COLLARS AND TIH W/TBG. TAG @ 7036'. DRILL OUT HARD CMT TO 7263'. CIRCU CLEAN. PU TO 7231'. SWI. SD.

3/29/2011 BREAK CIRCU. TAG @ 7367'. CONT DRILLING CMT. FELL OUT AT 7367". CIRCU CLEAN. TEST CSG TO 550 PSI. LOST 25 PSI IN 5 MINS. HAD A 50 PSI INCREASE IN 27 MINS TO 575 PSI. BWD TO 0 PSI. INCREASED TO 450 PSI IN 20 MINS. PRESSURED STABILIZED AT 450 PSI. BWD. TOO H W/TBG AND BHA. SWI. SD.

3/30/2011 PU 4.50 ARROWSET 1-X PKR AND TIH TO 7262". SWI.

3/31/2011 TIH TO SPOT DEPTH @ 7367'. MIRU 300 PSI. PUMP 925 GALS OF VORTEX A AND B SQUEEZE CHEMICAL. DISPLACE TO SPOT DEPTH. PU TO 7270' AND SET PKR. PRESSURE UP SQUEEZE TO 1500 PSI. LOST 500 PSI IN 5 MINS. PRESSURE UP TO 1500 PSI. LOST 400 PSI IN 4 MINS. NU N2 TO TBG AND PRESSURE UP TO 1500 PSI. SD

4/1/2011 HAD A 250 PSI GAIN IN 20 MINS. PRESSURE UP TO 2000 PSI. LOST 850 PSI IN 30 MINS. STAGE PRESSURE UP TO 3000 PSI. HAD A 800 PSI LOSS. PRESSURE UP TO 3000 PSI AND NU N2.

4/2/2011 PRESSURE UP ON SQUEEZE TO 650 PSI FOR 30 MINS. NO LEAK OFF. BWD TO 0 PSI FOR 30 MINS. NO PRESSURE GAIN. PRESSURE UP ON SQUEEZE TO 550 PSI FOR 30 MINS. NO LEAK OFF OR GAIN. BWD TO 50 PSI AND MONITOR PRESSURE FOR 1 HR. NO PRESSURE GAIN. RELEASE PKR AND TIH TO 7367".

**TBAU 20**  
**CASING LEAK REPAIR SUMMARY**

REVERSE CIRCU 70 BBLs. TOO H. PU 4 3/4" BIT, 6-3 1/2" DRILL COLLARS AND TIH TO 7270". SWI. NOTE: CHEMICAL SQUEEZE IS HOLDING.

4/7/2011 TEST CSG TO 550 PSI FOR 30 MINS. NO LEAK OFF. TIH AND TAG AT 7466'. DRILL OUT CBP AND PUSH TO BOTTOM. TAG AT 9241'. 51' BELOW BOTTOM PERF. TOO H LAYING DOWN 2 7/8" WORK STRING. LAY DOWN 77 JTS. SD DUE TO HIGH WINDS.

4/8/2011 CONT TOO H LAYING DOWN WORK STRING. MIRU HYDRO TESTERS. PU 4' IPC SUB W/A PUMP OUT PLUG, 1.39 "R" PROFILE NIPPLE, 6' IPC SUB, 4.60" NICKEL PLATED ARROWSET PKR W/ ON/OFF TOOL W/A 1.50" "F" NIPPLE AND HYDRO TEST TO 5000 PSI 288 JTS OF 2 3/8" IPC JTS OF PRODUCTION TBG. SET PKR @ 9092'. TEST TO 500 PSI. NO LEAK OFF. RELEASE ON/OFF TOOL. SWI.

4/9/2011 CIRCU 208 BBLs OF PKR FLUID. LATCH ON PKR. ND BOP, NUWH. LEAVE CSG OPEN TO FRAC TANK.

4/11/2011 PRESSURED UP BACKSIDE TO 540 PSI. PRESSURE DROPPED TO 520 PSI OVER 30 MINUTES SUCCESSFULLY PASSING MIT. BLED OF PRESSURE. HOOKED UP 2" HOSE TO TUBING, PRESSURED UP TO 1500 PSI PUMPING OUT PUMP OUT PLUG SET @ 9011'. BLED OF PRESSURE. RDMO.