

Submit 3 Copies To Appropriate District
Office
District I
1625 N. French Dr., Hobbs, NM 87240
District II
1301 W. Grand Ave., Artesia, NM 88210
District III
1000 Rio Brazos Rd., Aztec, NM 87410
District IV
1220 S. St. Francis Dr., Santa Fe, NM
87505

State of New Mexico
Energy, Minerals and Natural Resources

Form C-103
June 19, 2008

RECEIVED
HOBBS
OIL CONSERVATION DIVISION
1220 South St. Francis Dr.
Santa Fe, NM 87505
MAY 17 2011

SUNDRY NOTICES AND REPORTS ON WELLS (DO NOT USE THIS FORM FOR PROPOSALS TO DRILL OR TO DEEPEN OR PLUG BACK TO A DIFFERENT RESERVOIR. USE "APPLICATION FOR PERMIT" (FORM C-101) FOR SUCH PROPOSALS.)	
1. Type of Well: Oil Well <input checked="" type="checkbox"/> Gas Well <input type="checkbox"/> Other <input type="checkbox"/>	WELL API NO. 30-025-11530
2. Name of Operator Energen Resources Corporation	5. Indicate Type of Lease STATE <input type="checkbox"/> FEE <input checked="" type="checkbox"/>
3. Address of Operator 3300 N. "A" St., Bldg 4, Ste. 100, Midland, TX 79705	6. State Oil & Gas Lease No. 024695
4. Well Location Unit Letter J : 1650 feet from the South line and 1650 feet from the East line Section 10 Township 25S Range 37E NMPM County Lea	7. Lease Name or Unit Agreement Name: Stuart Langlie Mattix Unit
	8. Well Number 122
	9. OGRID Number 162928
	10. Pool name or Wildcat Langlie Mattix 7 RVRs Queen Grayburg
11. Elevation (Show whether DR, RKB, RT, GR, etc.)	

12. Check Appropriate Box to Indicate Nature of Notice, Report, or Other Data

NOTICE OF INTENTION TO:

PERFORM REMEDIAL WORK ☐ PLUG AND ABANDON ☒
TEMPORARILY ABANDON ☐ CHANGE PLANS ☐
PULL OR ALTER CASING ☐ MULTIPLE COMPL ☐
DOWNHOLE COMMINGLE ☐

OTHER: ☐

SUBSEQUENT REPORT OF:

REMEDIAL WORK ☐ ALTERING CASING ☐
COMMENCE DRILLING OPNS. ☐ P AND A ☐
CASING/CEMENT JOB ☐

OTHER: ☐

13. Describe proposed or completed operations. (Clearly state all pertinent details, and give pertinent dates, including estimated date of starting any proposed work). SEE RULE 1103. For Multiple Completions: Attach wellbore diagram of proposed completion or recompletion.

Plugging procedure attached.

The Oil Conservation Division Must be notified
24 hours prior to the beginning of plugging operations.

Spud Date:

Rig Release Date:

I hereby certify that the information above is true and complete to the best of my knowledge and belief.

SIGNATURE Tracie J Cherry TITLE Asst. Supv Regulatory/Admin DATE 05-16-11

Type or print name Tracie J Cherry E-mail address: _____ PHONE 432/684-3692

For State Use Only

APPROVED BY E. Gonzalez TITLE STATE MGR DATE 5-19-2011

Conditions of Approval (if any):

ENERGEN RESOURCES CORPORATION

Stuart Langlie Mattix Unit #122

1650' FSL and 1650' FEL

Sec 10, T-25-S, R-37-E

Lea, Co. NM

Langlie Mattix Field (7 RVR-S-Q-Grayburg)

P&A Well

Plugging Procedure:

1. RIH with tbg, tag CIBP @ 2880'.
2. ~~Dump bail 35'~~ *Spot 25 sx cmt* of cement on CIBP.
3. WOC – Tag cement plug. *@ 2720'*
4. Fill remaining wellbore with MLF.
5. RIH with perf guns to 1345'. Perforate 7" casing with 4 sqz holes.
6. Pump 60 sx cement through sqz hole at 1345'.
7. WOC - Tag cement plug. *@ 1220' ±*
8. RIH with perf guns to 771'. Perforate 7" & 8-1/4" casing with 4 sqz holes.
9. Pump 60 sx cement through sqz hole at 771'.
10. WOC - Tag cement plug. *@ 645' ±*
11. RIH with perf guns to 175'. Perforate casing with 4 sqz holes.
12. Circulate cement to surface through perfs at 175'.
13. Cut off wellhead 3' from surface and weld on P&A marker.

ENERGEN RESOURCES

Stuart Langlie Mattix Unit #122

Lea County, NM

Current Conditions: 4/19/2011

TA'd PRD

Conductor:

None

Surface Casing:

10" 45# @ 721'

Hole Size: 12-1/2"

Cemented to surface
w/ 300 sx on back side
of 10" casing

*Original 15-1/2" & 12-1/2"
casing pulled. Drilled w/
cable tools

Intermediate Casing:

8-1/4" 32# @ 1295'

Hole Size: 10"

Cemented w/ 75 sx

TOC: 1145' (calc)

Production Casing:

7" 24# @ 2850'

Hole Size: 8-1/4"

Cemented w/ 215 sx

TOC: 2126' (calc)

Production Liner:

5"

From 2794' - 3404'

Cemented w/ 75 sx

Circulated

GR Elevation: 3126'

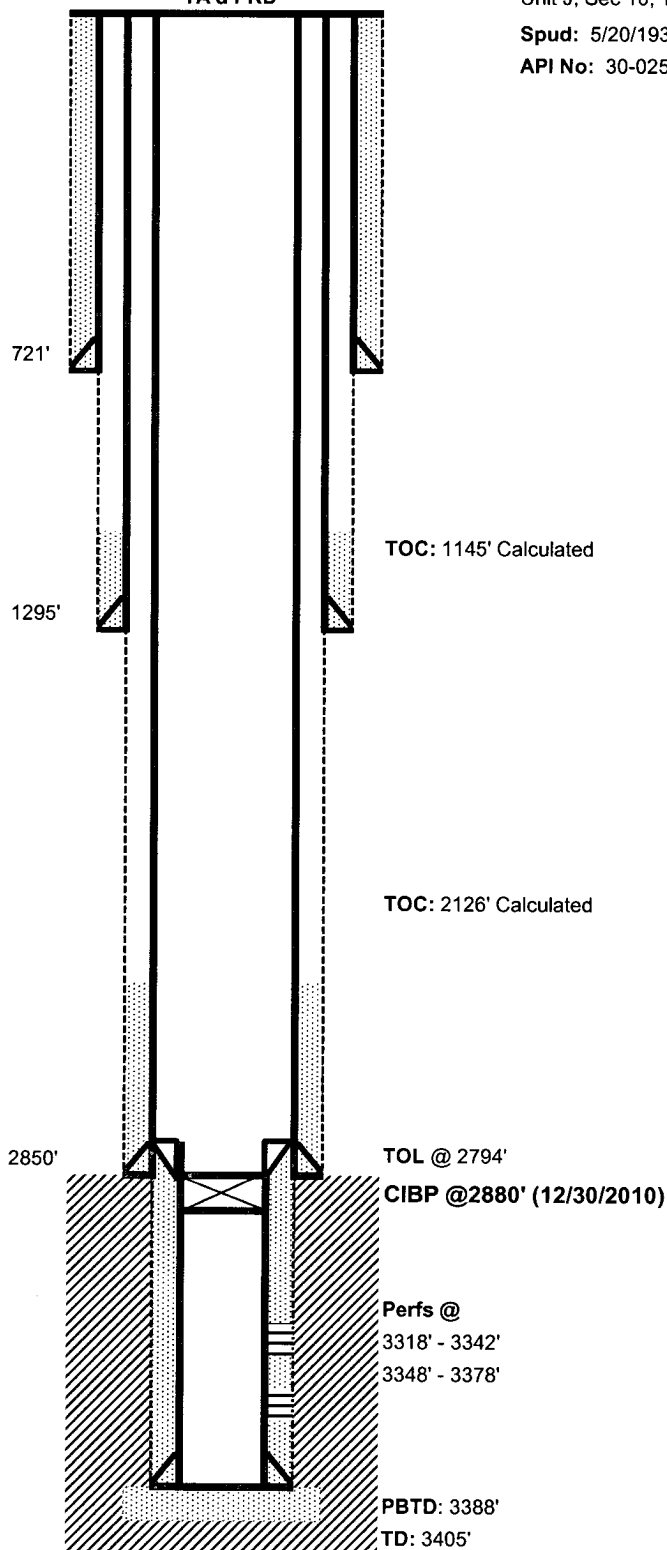
Location: 1650' FSL X 1650' FEL

Unit J, Sec 10, T-25-S, R-37-E

Spud: 5/20/1936

Completed: 7/27/1936

API No: 30-025-11530



ENERGEN RESOURCES

Stuart Langlie Mattix Unit #122

Lea County, NM

GR Elevation: 3126'

Location: 1650' FSL X 1650' FEL

Unit J, Sec 10, T-25-S, R-37-E

Spud: 5/20/1936

Completed: 7/27/1936

API No: 30-025-11530

Conductor:

None

Surface Casing:

10" 45# @ 721'

Hole Size: 12-1/2"

Cemented to surface
w/ 300 sx on back side
of 10" casing

*Original 15-1/2" & 12-1/2"
casing pulled. Drilled w/
cable tools

Intermediate Casing:

8-1/4" 32# @ 1295'

Hole Size: 10"

Cemented w/ 75 sx

TOC: 1145' (calc)

Production Casing:

7" 24# @ 2850'

Hole Size: 8-1/4"

Cemented w/ 215 sx

TOC: 2126' (calc)

Production Liner:

5"

From 2794' - 3404'

Cemented w/ 75 sx

Circulated

