

District I  
1625 N. French Dr., Hobbs, NM 88240

District II  
1301 W. Grand Avenue, Artesia, NM 88210

District III  
1000 Rio Brazos Road, Aztec, NM 87410

District IV  
1220 S. St. Francis Dr., Santa Fe, NM 87505

State of New Mexico  
Energy Minerals and Natural Resources

Form C-101  
June 16, 2008

Oil Conservation Division  
1220 South St. Francis Dr.  
Santa Fe, NM 87505

Submit to appropriate District Office

☐ AMENDED REPORT

**APPLICATION FOR PERMIT TO DRILL, RE-ENTER, DEEPEN, PLUGBACK, OR ADD A ZONE**

<sup>1</sup> Operator Name and Address ConocoPhillips Company 3300 N "A" St, Bldg 6, Midland, TX 79705		<sup>2</sup> OGRID Number 217817
<sup>3</sup> Property Code 38238	<sup>4</sup> Property Name Tourmaline State	<sup>5</sup> APL Number 30 - 025 - 40140
<sup>9</sup> Proposed Pool 1 Maljamar; Yeso, West		<sup>10</sup> Proposed Pool 2 4

**7 Surface Location**

UL or lot no.	Section	Township	Range	Lot Idn	Feet from the	North/South line	Feet from the	East/West line	County
O	16	17S	32E		990	South	1800	East	Lea

**8 Proposed Bottom Hole Location If Different From Surface**

UL or lot no.	Section	Township	Range	Lot Idn	Feet from the	North/South line	Feet from the	East/West line	County

**Additional Well Information**

<sup>11</sup> Work Type Code N	<sup>12</sup> Well Type Code O	<sup>13</sup> Cable/Rotary R	<sup>14</sup> Lease Type Code S	<sup>15</sup> Ground Level Elevation 4034'
<sup>16</sup> Multiple	<sup>17</sup> Proposed Depth 7200'	<sup>18</sup> Formation Yeso, West	<sup>19</sup> Contractor Precision 194	<sup>20</sup> Spud Date 07/31/2011

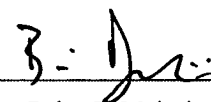
**21 Proposed Casing and Cement Program**

Hole Size	Casing Size	Casing weight/foot	Setting Depth	Sacks of Cement	Estimated TOC
12.25"	8.625"	24#	850'	400 sx C	surface
7.875"	5.5"	17#	7190'	1000 sx C	surface

<sup>22</sup> Describe the proposed program. If this application is to DEEPEN or PLUG BACK, give the data on the present productive zone and proposed new productive zone. Describe the blowout prevention program, if any. Use additional sheets if necessary.  
See attached drilling program for Mud and BOP information

**Permit Expires 2 Years From Approval  
Date Unless Drilling Underway**

<sup>23</sup> I hereby certify that the information given above is true and complete to the best of my knowledge and belief.

Signature:   
Printed name: Brian D Maiorino

Title: Regulatory Specialist

E-mail Address: brian.d.maiorino@conocophilips.com

Date: 05/18/2011

Phone: (432)688-6913

**OIL CONSERVATION DIVISION**

Approved by:

Title:

**PETROLEUM ENGINEER**

Approval Date: **MAY 24 2011**

Expiration Date:

Conditions of Approval Attached ☐

**MAY 26 2011**

Plane Coordinate  
X = 673,589.1  
Y = 666,122.3

**NOTE:**

- 1) Plane Coordinates shown hereon are Transverse Mercator Grid and Conform to the "New Mexico Coordinate System", New Mexico East Zone, North American Datum of 1927. Distances shown hereon are mean horizontal surface values.

### OPERATOR CERTIFICATION

I hereby certify the information contained herein is true and complete to the best of my knowledge and belief, and that this organization either owns a working interest or undivided mineral interest in the land including the proposed bottom hole location or has a right to drill this well at this location pursuant to a contract with an owner of such a mineral or working interest, or to a voluntary pooling agreement or a compulsory pooling order heretofore entered by the division.

B. J.      5/18/11

---

Signature                  Date

Brian D. Mariano

---

Printed Name

---

### SURVEYOR CERTIFICATION

I hereby certify that the well location shown on this plat was plotted from field notes of actual surveys made by me or under my supervision and that the same is true and correct to the best of my belief.

March 28, 2011 DONALD

---

Date of Survey

Signature & Seal of Professional Surveyor

W.O. Num. 2011-0536

---

Certificate No. MACON McDONALD      12185

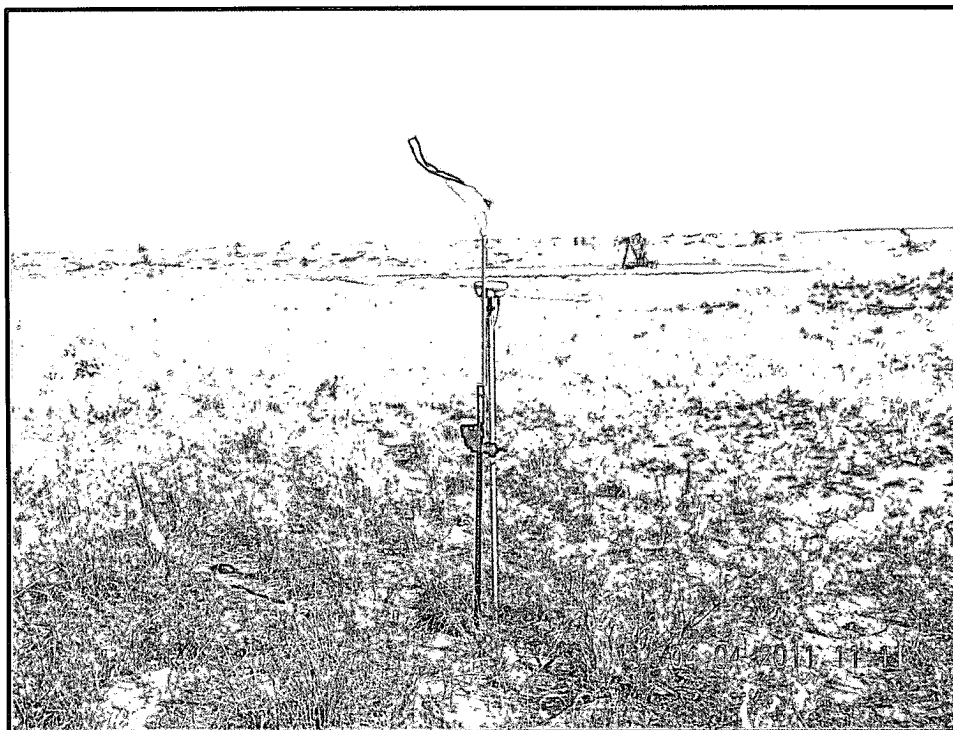
Tourmaline # 4

15. Proposed Depth = 7200' MD RKB

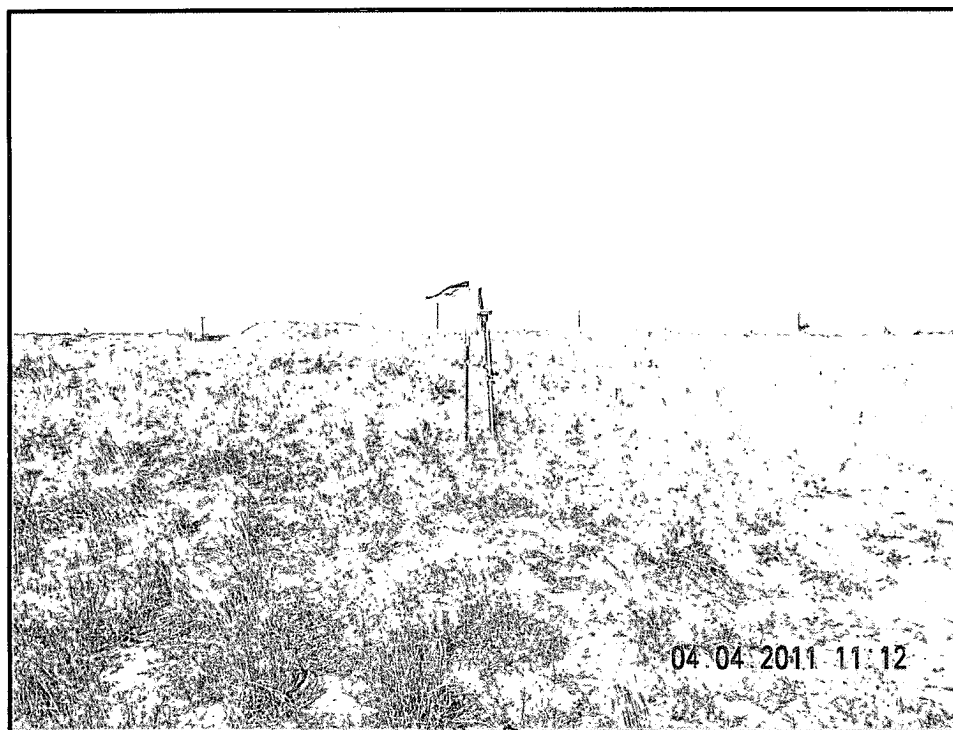
19. Proposed Casing and Cement Program						
Type	Hole Size (inches)	Casing OD (inches)	Casing Wt (lb/ft)	Setting Depth (feet)	Sacks of Cement	Estimated TOC (feet)
Surface	12.25	8.625	24	850	400	0
Prod	7.875	5.5	17	7190	1000	0

Casing and Cement Program: Additional Comments	
Fresh Water and Fresh Water Mud will be used for drilling the surface hole.	
Brine and Brine Based Mud will be used for drilling the production hole.	

Proposed Blowout Prevention Program			
Type	Working Pressure	Test Pressure	Manufacturer
Annular	2000	1000	
Blind Ram	2000	2000	
Pipe Ram	2000	2000	



NORTHERLY VIEW TO LOCATION STAKE



WESTERLY VIEW TO LOCATION STAKE

ConocoPhillips

**TOURMALINE STATE #4**

Located 990' FSL & 1800' FEL, Section 16  
Township 17 South, Range 32 East, N.M.P.M.  
Lea County, New Mexico

Drawn By: KHY

Date: April 28, 2011

**WEST**  
**COMPANY**  
of Midland, Inc.

110 W. LOUISIANA, STE. 110  
MIDLAND TEXAS, 79701  
(432) 687-0865 - (432) 687-0868 FAX

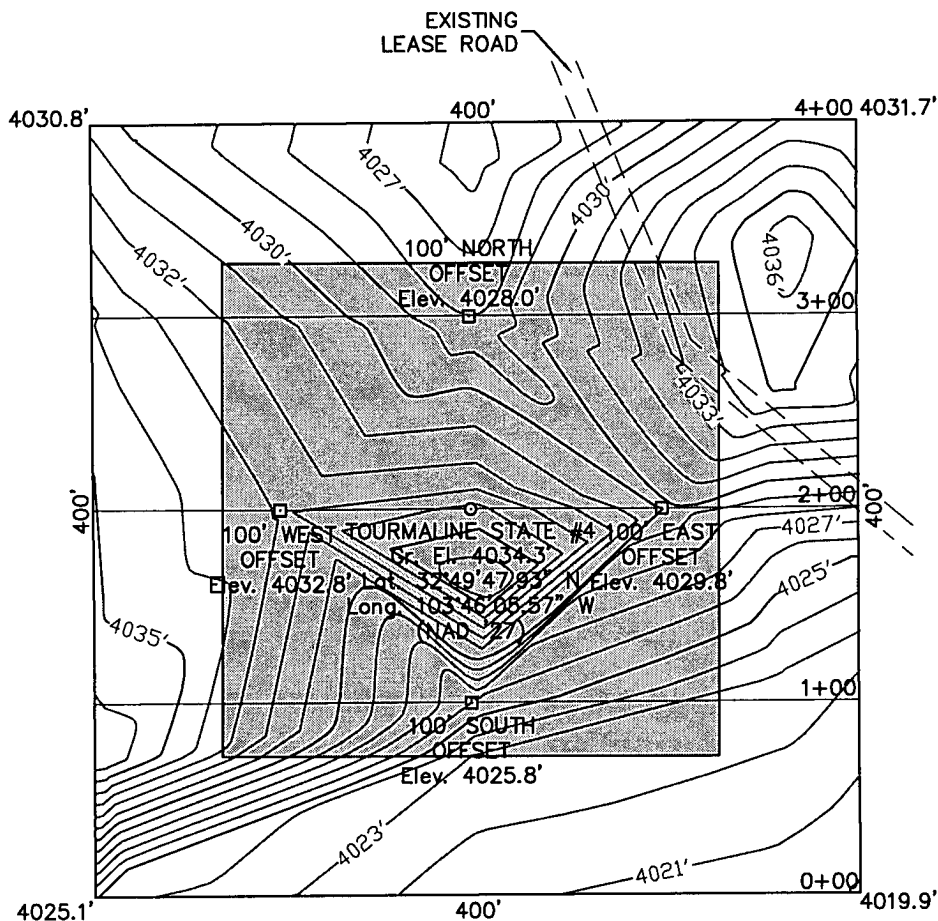
# SECTION 16, TOWNSHIP 17 SOUTH, RANGE 32 EAST, N.M.P.M.

LEA COUNTY

NEW MEXICO

THIS IS NOT A BOUNDARY SURVEY  
Apparent property corners and property lines, if shown,  
are for information only.

L-2011-0536-A



## DRIVING DIRECTIONS

FROM THE INTERSECTION OF HIGHWAY 82 AND MALJAMAR ROAD. GO SOUTH ON MALJAMAR ROAD FOR 2.0 MILES. TURN WEST FOR 0.1 MILES. TURN NORTHWEST AND GO 0.3 MILES. LOCATION IS APPROXIMATELY 200 FEET TO THE WEST.

I HEREBY CERTIFY THAT THIS PLAT WAS MADE FROM AN ACTUAL SURVEY MADE BY ME OR UNDER MY DIRECT SUPERVISION AND THAT THE SAME IS TRUE AND CORRECT TO THE BEST OF MY KNOWLEDGE AND BELIEF.

*[Signature]*

MACON McDONALD

PLS NO. 12185



**ConocoPhillips**

Topographic Map

**TOURMALINE STATE #4**

Located 990' FSL & 1800' FEL, Section 16  
Township 17 South, Range 32 East, N.M.P.M.  
Lea County, New Mexico

Drawn By: KHY

Date: April 28, 2011

Scale: 1" = 100'

Field Book: 508 / 37-38

Sheet 1 of 3

Quadrangle: Maljamar

W.O. No: 2011-0536

Dwg. No.: L-2011-0536-A



110 W. LOUISIANA, STE. 110  
MIDLAND TEXAS, 79701  
(432) 687-0865 - (432) 687-0868 FAX

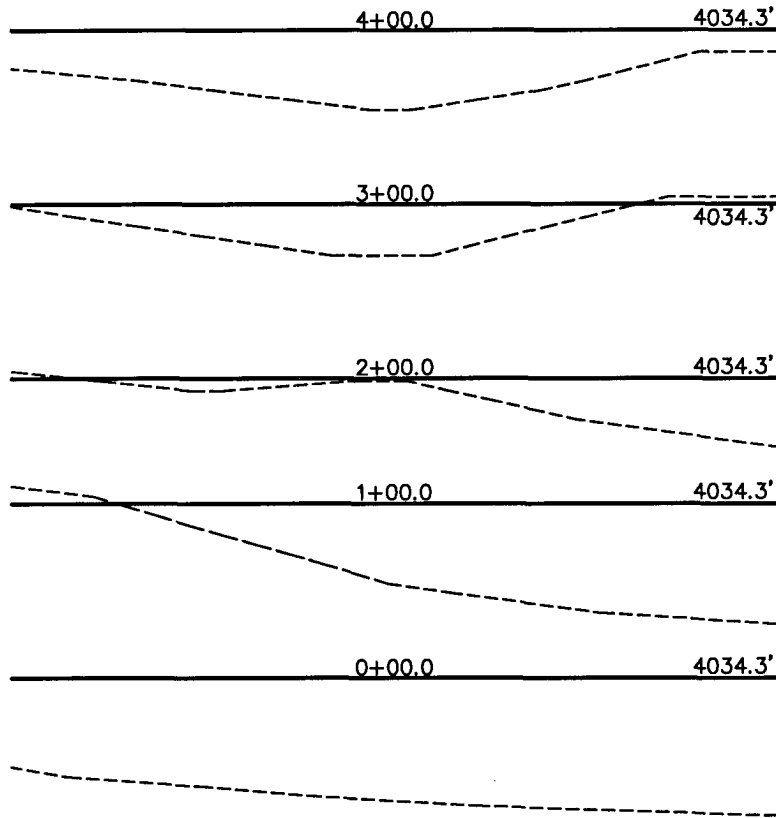
# SECTION 16, TOWNSHIP 17 SOUTH, RANGE 32 EAST, N.M.P.M.

LEA COUNTY

NEW MEXICO

THIS IS NOT A BOUNDARY SURVEY  
Apparent property corners and property lines, if shown,  
are for information only.

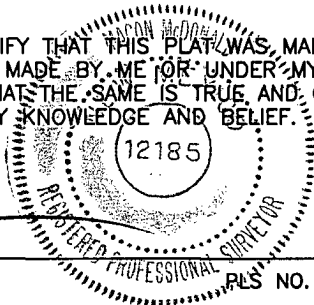
L-2011-0536-B



I HEREBY CERTIFY THAT THIS PLAT WAS MADE FROM AN ACTUAL SURVEY MADE BY ME OR UNDER MY DIRECT SUPERVISION AND THAT THE SAME IS TRUE AND CORRECT TO THE BEST OF MY KNOWLEDGE AND BELIEF.

*[Signature]*

MACON McDONALD



**ConocoPhillips**

Topographic Map

**TOURMALINE STATE #4**

Located 990' FSL & 1800' FEL, Section 16  
Township 17 South, Range 32 East, N.M.P.M.  
Lea County, New Mexico

Drawn By: KHY	Date: April 28, 2011
Scale: 1" = 100'	Field Book: 508 / 37-38
Sheet 2 of 3	Quadrangle: Maljamar
W.O. No: 2011-0536	Dwg. No.: L-2011-0536-B

**WEST**  
**COMPANY**  
of Midland, Inc.

110 W. LOUISIANA, STE. 110  
MIDLAND TEXAS, 79701  
(432) 687-0865 - (432) 687-0868 FAX

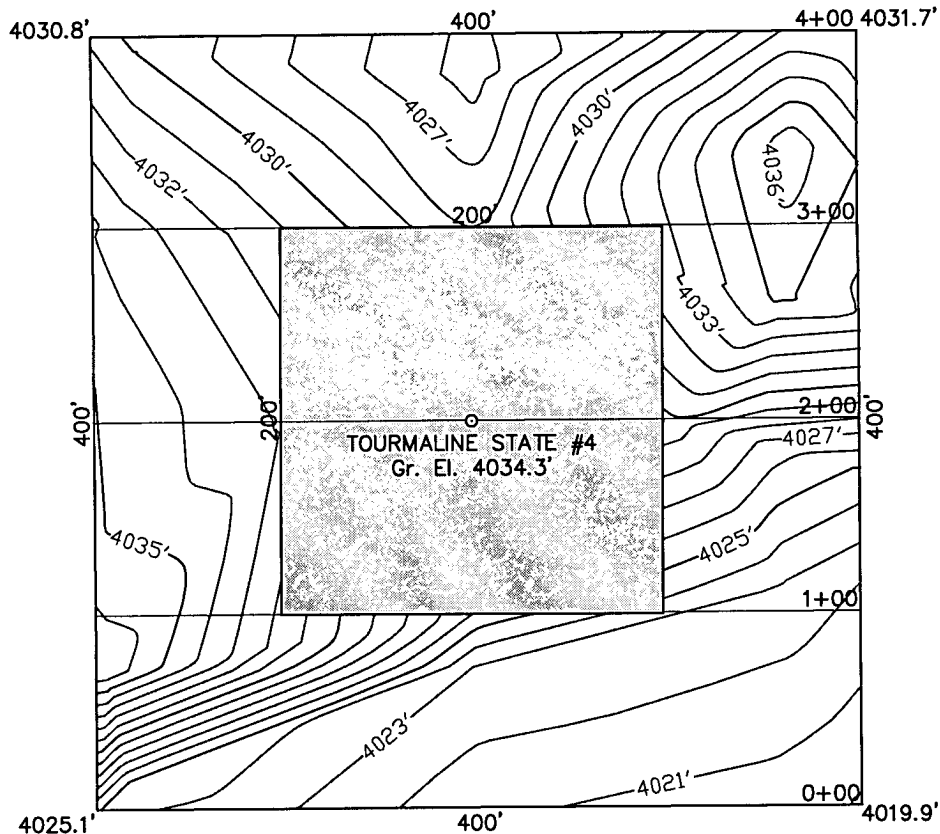
# SECTION 16, TOWNSHIP 17 SOUTH, RANGE 32 EAST, N.M.P.M.

LEA COUNTY

THIS IS NOT A BOUNDARY SURVEY  
Apparent property corners and property lines, if shown,  
are for information only.

NEW MEXICO

L-2011-0536-C



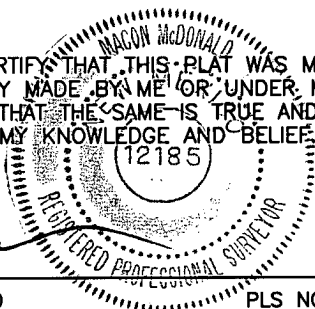
## INTERIM RECLAMATION



I HEREBY CERTIFY THAT THIS PLAT WAS MADE FROM  
AN ACTUAL SURVEY MADE BY ME OR UNDER MY DIRECT  
SUPERVISION AND THAT THE SAME IS TRUE AND CORRECT  
TO THE BEST OF MY KNOWLEDGE AND BELIEF.

*[Signature]*

MACON McDONALD



PLS NO. 12185

**ConocoPhillips**

### Topographic Map TOURMALINE STATE #4

Located 990' FSL & 1800' FEL, Section 16  
Township 17 South, Range 32 East, N.M.P.M.  
Lea County, New Mexico

Drawn By: KHY	Date: April 28, 2011
Scale: 1" = 100'	Field Book: 508 / 37-38
Sheet 3 of 3	Quadrangle: Maljamar
W.O. No: 2011-0536	Dwg. No.: L-2011-0536-C

**WEST  
COMPANY**  
of Midland, Inc.

110 W. LOUISIANA, STE. 110  
MIDLAND TEXAS, 79701  
(432) 687-0865 - (432) 687-0868 FAX

CONTOUR INTERVAL:  
MALJAMAR - 5'

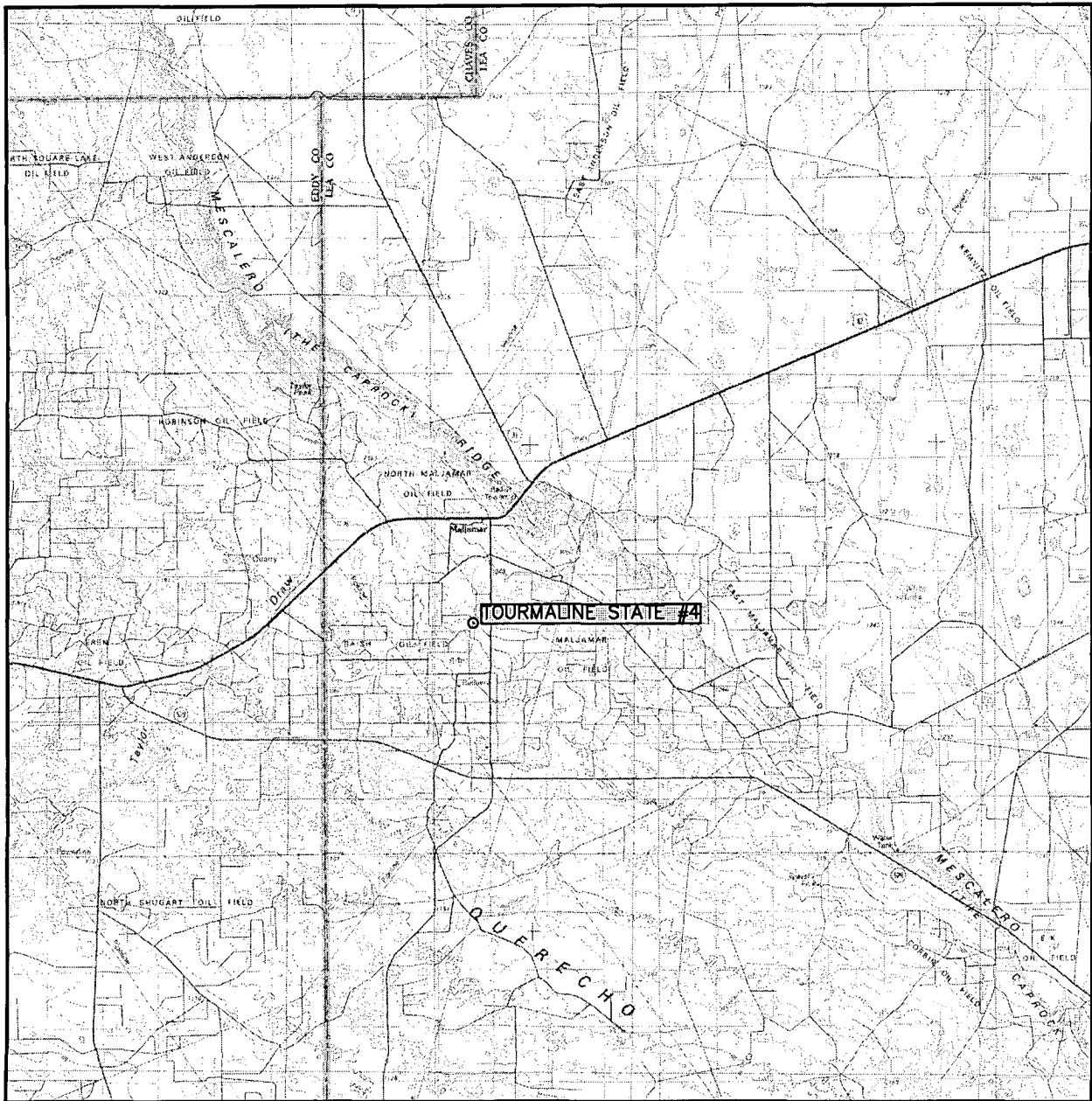
U.S.G.S. TOPOGRAPHIC MAP  
MALJAMAR



**WEST  
COMPANY**  
of Midland, Inc.

110 W. LOUISIANA, STE. 110  
MIDLAND TEXAS, 79701  
(432) 687-0865 - (432) 687-0868 FAX

# VICINITY MAP



SCALE: 1" = 3 MILES

SEC. 16 TWP. 17-S RGE. 32-E

SURVEY N.M.P.M.

COUNTY LEA

DESCRIPTION 990' FSL & 1800' FEL

ELEVATION 4034'

OPERATOR CONOCOPHILLIPS

LEASE TOURMALINE STATE



**WEST  
COMPANY**  
of Midland, Inc.

110 W. LOUISIANA, STE. 110  
MIDLAND TEXAS, 79701  
(432) 687-0865 - (432) 687-0868 FAX