

MAY 27 2011

**DISTRICT I**  
1625 N. FRENCH DR., HOBBS, NM 88240

MAY 27 2011 State of New Mexico  
Energy, Minerals and Natural Resources Department

**DISTRICT II**  
1301 W. GRAND AVENUE, ARTESIA, NM 88210

**DISTRICT III**  
1000 RIO BRAZOS RD., AZTEC, NM 87410

RECEIVED  
OIL CONSERVATION DIVISION  
11885 SOUTH ST. FRANCIS DR.  
Santa Fe, New Mexico 87505

Form C-102

Revised October 12, 2005

Submit to Appropriate District Office

State Lease - 4 Copies

Fee Lease - 3 Copies

**DISTRICT IV**  
11885 S. ST. FRANCIS DR., SANTA FE, NM 87505

## WELL LOCATION AND ACREAGE DEDICATION PLAT

☐ AMENDED REPORT

API Number 30-025- 40,50	Pool Code 44500 ✓	Pool Name MALJAMAR; YESO, WEST
Property Code 302498 ✓	Property Name GC FEDERAL	Well Number 36
OGRID No. 229137	Operator Name COG OPERATING, LLC	Elevation 3991'

### Surface Location

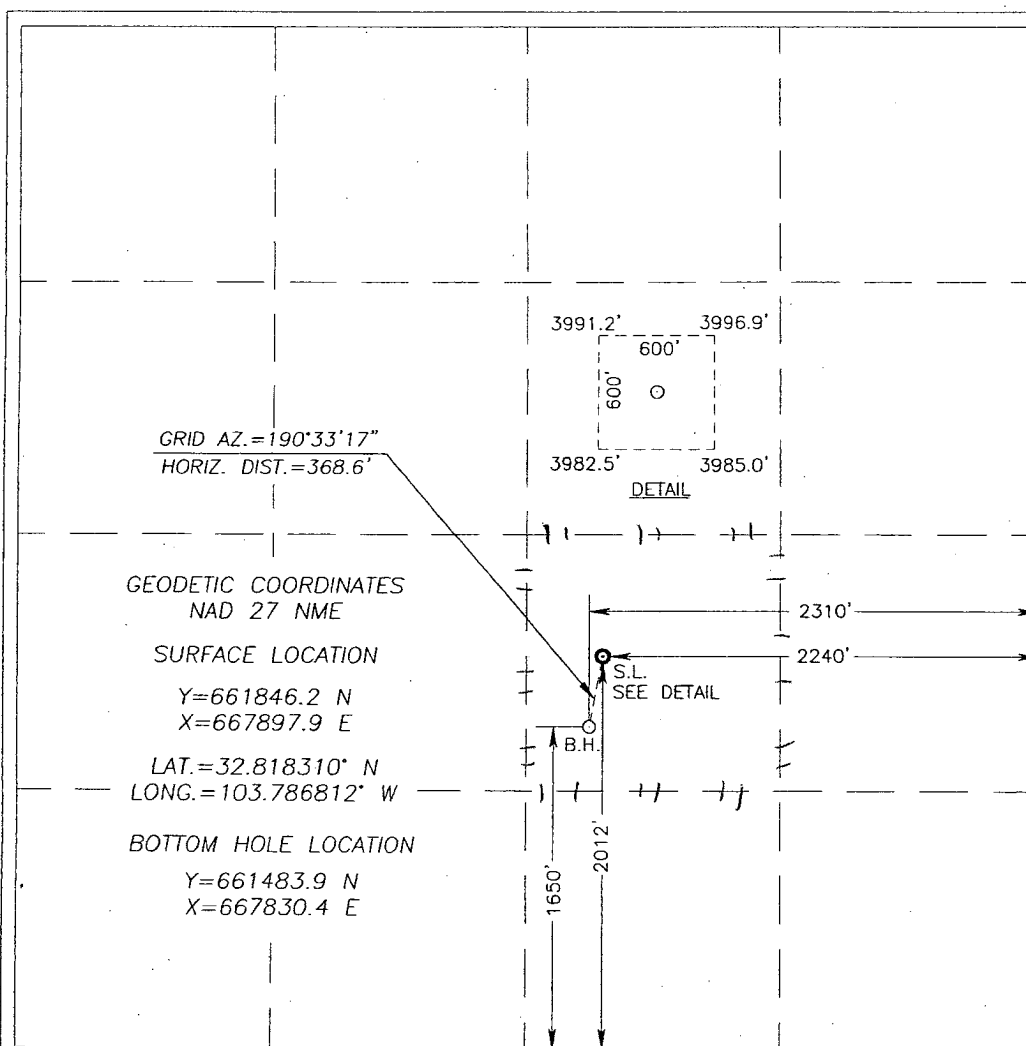
UL or lot No.	Section	Township	Range	Lot Idn	Feet from the	North/South line	Feet from the	East/West line	County
J	20	17-S	32-E		2012	SOUTH	2240	EAST	LEA

## Bottom Hole Location If Different From Surface

UL or lot No.	Section	Township	Range	Lot Idn	Feet from the	North/South line	Feet from the	East/West line	County
J	20	17-S	32-E		1650	SOUTH	2310	EAST	LEA

Dedicated Acres	Joint or Infill	Consolidation Code	Order No.
40			

NO ALLOWABLE WILL BE ASSIGNED TO THIS COMPLETION UNTIL ALL INTERESTS HAVE BEEN CONSOLIDATED  
OR A NON-STANDARD UNIT HAS BEEN APPROVED BY THE DIVISION



### OPERATOR CERTIFICATION

I hereby certify that the information herein is true and complete to the best of my knowledge and belief, and that this organization either owns a working interest or unleased mineral interest in the land including the proposed bottom hole location or has a right to drill this well at this location pursuant to a contract with an owner of such mineral or working interest, or to a voluntary pooling agreement or a compulsory pooling order heretofore entered by the division.

Signature \_\_\_\_\_

9/8/2010

Date \_\_\_\_\_

Robyn Odom

Printed Name ROBY

### SURVEYOR CERTIFICATION

I hereby certify that the well location shown on this plat was plotted from field notes of actual surveys made by me or under my supervision, and that the same is true and correct to the best of my belief.

AUGUST 12 2010

Date Surveyed \_\_\_\_\_

Signature & Seal of Professional Surveyor

Ronald E. Edron 09/07/2010

Certificate No. GARY G. EIDSON 12641  
RONALD J. EIDSON 3239