

HOBBS OCD

DISTRICT I

1625 N. French Dr., Hobbs, NM 88240

DISTRICT II

1301 W. Grand Avenue, Artesia, NM 88210

DISTRICT III

1000 Rio Brazos Rd., Aztec, NM 87410

DISTRICT IV

1220 S. St. Francis Dr., Santa Fe, NM 87505

State of New Mexico
Energy, Minerals and Natural Resources Department

Form C-102

Revised July 18, 2010

Submit one copy to appropriate
District OfficeCONSERVATION DIVISION
1220 South St. Francis Dr.
Santa Fe, New Mexico 87505

WELL LOCATION AND ACREAGE DEDICATION PLAT

☐ AMENDED REPORT

API Number 30-025-40144	Pool Code 62700	Pool Name Wlantz; ABO
Property Code 306053	Property Name BUNIN	Well Number 9
OGRID No. 873	Operator Name APACHE CORPORATION	Elevation 3465'

Surface Location

UL or lot No.	Section	Township	Range	Lot Idn	Feet from the	North/South line	Feet from the	East/West line	County
A	13	21 S	37 E		990	NORTH	330	EAST	LEA

Bottom Hole Location If Different From Surface

UL or lot No.	Section	Township	Range	Lot Idn	Feet from the	North/South line	Feet from the	East/West line	County

Dedicated Acres 40	Joint or Infill	Consolidation Code	Order No.
------------------------------	-----------------	--------------------	-----------

NO ALLOWABLE WILL BE ASSIGNED TO THIS COMPLETION UNTIL ALL INTERESTS HAVE BEEN CONSOLIDATED
OR A NON-STANDARD UNIT HAS BEEN APPROVED BY THE DIVISION

SURFACE LOCATION

Lot - N 32°29'00.69"
Long - W 103°06'33.12"
NMSPCE- N 541803.474
E 918811.414
(NAD-83)

SURFACE LOCATION

Lot - N 32°29'00.27"
Long - W 103°16'31.43"
NMSPCE- N 541744.449
E 877627.343
(NAD-27)

OPERATOR CERTIFICATION

I hereby certify that the information contained herein is true and complete to the best of my knowledge and belief, and that this organization either owns a working interest or unleased mineral interest in the land including the proposed bottom hole location or has a right to drill this well at this location pursuant to a contract with an owner of such a mineral or working interest, or to a voluntary pooling agreement or a compulsory pooling order heretofore entered by the division.

Sorina L. Flores 5/23/11
Signature Date

Sorina L. Flores
Printed Name

Sorina.L.Flores@apachecorp.com
Email Address

SURVEYOR CERTIFICATION

I hereby certify that the well location shown on this plat was plotted from field notes of actual surveys made by me or under my supervision and that the same is true and correct to the best of my belief.

Date Surveyed

Signature & Seal of
Professional Surveyor

Certificate No. Gary L. Jones 7977

BASIN SURVEYS 24670

JUN 06 2011

DISTRICT I
1625 N. French Dr., Hobbs, NM 88240

DISTRICT II
1301 W. Grand Avenue, Artesia, NM 88210

DISTRICT III
1000 Rio Brazos Rd., Aztec, NM 87410

DISTRICT IV
1220 S. St. Francis Dr., Santa Fe, NM 87505

HOBBS OCD

MAY 25 2011

RECEIVED

State of New Mexico
Energy, Minerals and Natural Resources Department

Form C-102
Revised July 16, 2010

Submit one copy to appropriate
District Office

OIL CONSERVATION DIVISION
1220 South St. Francis Dr.
Santa Fe, New Mexico 87505

WELL LOCATION AND ACREAGE DEDICATION PLAT

☐ AMENDED REPORT

API Number 30-025-40144	Pool Code 19190	Pool Name Drinkard
Property Code 306053	Property Name BUNIN	Well Number 9
OGRID No. 873	Operator Name APACHE CORPORATION	Elevation 3465'

Surface Location

UL or lot No.	Section	Township	Range	Lot Idn	Feet from the	North/South line	Feet from the	East/West line	County
A	13	21 S	37 E		990	NORTH	330	EAST	LEA

Bottom Hole Location If Different From Surface

UL or lot No.	Section	Township	Range	Lot Idn	Feet from the	North/South line	Feet from the	East/West line	County

Dedicated Acres 40	Joint or Infill	Consolidation Code	Order No.
------------------------------	-----------------	--------------------	-----------

NO ALLOWABLE WILL BE ASSIGNED TO THIS COMPLETION UNTIL ALL INTERESTS HAVE BEEN CONSOLIDATED
OR A NON-STANDARD UNIT HAS BEEN APPROVED BY THE DIVISION

	SURFACE LOCATION Lat - N 32°29'00.69" Long - W 103°06'33.12" NMSPCE- N 541803.474 E 918811.414 (NAD-83)
	SURFACE LOCATION Lat - N 32°29'00.27" Long - W 103°16'31.43" NMSPCE- N 541744.449 E 877627.343 (NAD-27)
OPERATOR CERTIFICATION I hereby certify that the information contained herein is true and complete to the best of my knowledge and belief, and that this organization either owns a working interest or unleased mineral interest in the land including the proposed bottom hole location or has a right to drill this well at this location pursuant to a contract with an owner of such a mineral or working interest, or to a voluntary pooling agreement or a compulsory pooling order heretofore entered by the division. Signature Sorina L. Flores Date 5/23/11 Printed Name Sorina L. Flores Email Address sorina.flores@apachecorp.com	
SURVEYOR CERTIFICATION I hereby certify that the well location shown on this plat was plotted from field notes of actual surveys made by me or under my supervision, and that the same is true and correct to the best of my belief. Date Surveyed MAY 11 2011 Signature & Seal of Professional Surveyor GARY L. JONES Certificate No. Gary L. Jones 7977 BASIN SURVEYS 24670	

JUN 06 2011

DISTRICT I
1625 N. French Dr., Hobbs, NM 88240

DISTRICT II
1301 W. Grand Avenue, Artesia, NM 88210

DISTRICT III
1000 Rio Brazos Rd., Aztec, NM 87410

DISTRICT IV
1220 S. St. Francis Dr., Santa Fe, NM 87505

HOBBS OCD

MAY 25 2011

RECEIVED

State of New Mexico
Energy, Minerals and Natural Resources Department

Form C-102
Revised July 18, 2010

Submit one copy to appropriate
District Office

OIL CONSERVATION DIVISION

1220 South St. Francis Dr.
Santa Fe, New Mexico 87505

WELL LOCATION AND ACREAGE DEDICATION PLAT

☐ AMENDED REPORT

API Number 30-025-40144	Pool Code 60240	Pool Name Tubh Oil and Gas (oil)
Property Code 306053	Property Name BUNIN	Well Number 9
OGRID No. 873	Operator Name APACHE CORPORATION	Elevation 3465'

Surface Location

UL or lot No. A	Section 13	Township 21 S	Range 37 E	Lot Idn	Feet from the 990	North/South line NORTH	Feet from the 330	East/West line EAST	County LEA
--------------------	---------------	------------------	---------------	---------	----------------------	---------------------------	----------------------	------------------------	---------------

Bottom Hole Location If Different From Surface

UL or lot No.	Section	Township	Range	Lot Idn	Feet from the	North/South line	Feet from the	East/West line	County
---------------	---------	----------	-------	---------	---------------	------------------	---------------	----------------	--------

Dedicated Acres 40	Joint or Infill	Consolidation Code	Order No.
-----------------------	-----------------	--------------------	-----------

NO ALLOWABLE WILL BE ASSIGNED TO THIS COMPLETION UNTIL ALL INTERESTS HAVE BEEN CONSOLIDATED
OR A NON-STANDARD UNIT HAS BEEN APPROVED BY THE DIVISION

	<p>OPERATOR CERTIFICATION</p> <p>I hereby certify that the information contained herein is true and complete to the best of my knowledge and belief, and that this organization either owns a working interest or unleased mineral interest in the land including the proposed bottom hole location or has a right to drill this well at this location pursuant to a contract with an owner of such a mineral or working interest, or to a voluntary pooling agreement or a compulsory pooling order heretofore entered by the division.</p> <p><u>Sorina L. Flores</u> 5/23/11 Signature Date</p> <p><u>Sorina L. Flores</u> Printed Name</p> <p><u>sorina.flores@apachecorp.com</u> Email Address</p>
	<p>SURVEYOR CERTIFICATION</p> <p>I hereby certify that the well location shown on this plat was plotted from field notes of actual surveys made by me or under my supervision and that the same is true and correct to the best of my belief.</p> <p>Date Surveyed Signature & Seal of Professional Surveyor Professional Surveyor Certificate No. Gary L. Jones 7977</p> <p>BASIN SURVEYS 24670</p>

JUN 06 2011

HOBBS OCD

MAY 25 2011

DISTRICT I

1625 N. French Dr., Hobbs, NM 88240

DISTRICT II

1301 W. Grand Avenue, Artesia, NM 88210

DISTRICT III

1000 Rio Brazos Rd., Aztec, NM 87410

DISTRICT IV

1220 S. St. Francis Dr., Santa Fe, NM 87505

State of New Mexico
Energy, Minerals and Natural Resources Department

Form C-102

Revised July 16, 2010

Submit one copy to appropriate
District Office

RECEIVED

OIL CONSERVATION DIVISION

1220 South St. Francis Dr.
Santa Fe, New Mexico 87505

WELL LOCATION AND ACREAGE DEDICATION PLAT

☐ AMENDED REPORT

API Number 30-025-40144	Pool Code 66660	Pool Name Blinebry Oil and Gas (oil)
Property Code 306053	Property Name BUNIN	Well Number 9
OGRID No. 873	Operator Name APACHE CORPORATION	Elevation 3465'

Surface Location

UL or lot No.	Section	Township	Range	Lot Idn	Feet from the	North/South line	Feet from the	East/West line	County
A	13	21 S	37 E		990	NORTH	330	EAST	LEA

Bottom Hole Location If Different From Surface

UL or lot No.	Section	Township	Range	Lot Idn	Feet from the	North/South line	Feet from the	East/West line	County

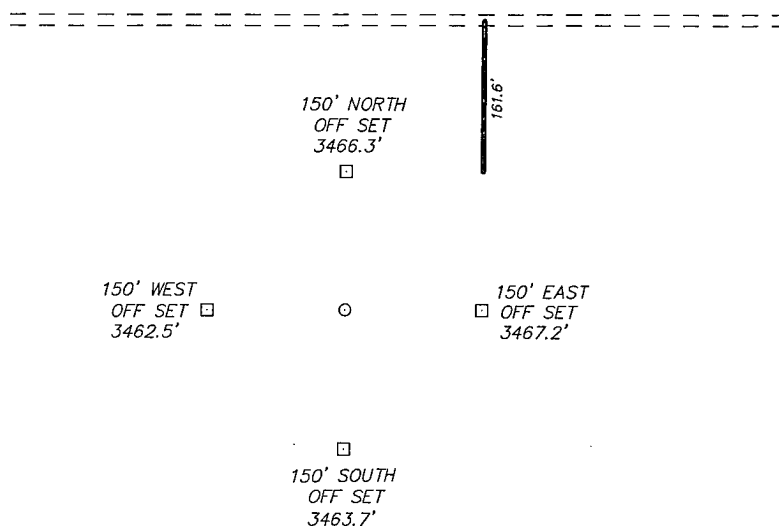
Dedicated Acres 40	Joint or Infill	Consolidation Code	Order No.
------------------------------	-----------------	--------------------	-----------

NO ALLOWABLE WILL BE ASSIGNED TO THIS COMPLETION UNTIL ALL INTERESTS HAVE BEEN CONSOLIDATED
OR A NON-STANDARD UNIT HAS BEEN APPROVED BY THE DIVISION

<p>SURFACE LOCATION Lat - N 32°29'00.69" Long - W 103°06'33.12" NMSPCE- N 541803.474 E 918811.414 (NAD-83)</p> <p>SURFACE LOCATION Lat - N 32°29'00.27" Long - W 103°16'31.43" NMSPCE- N 541744.449 E 877627.343 (NAD-27)</p>		<p>OPERATOR CERTIFICATION I hereby certify that the information contained herein is true and complete to the best of my knowledge and belief, and that this organization either owns a working interest or unleased mineral interest in the land including the proposed bottom hole location or has a right to drill this well at this location pursuant to a contract with an owner of such a mineral or working interest, or to a voluntary pooling agreement or a compulsory pooling order heretofore entered by the division.</p> <p><i>Sorina L. Flores</i> 5/23/11 Signature Date Sorina L. Flores Printed Name sorina.flores@apachecorp.com Email Address</p>
		<p>SURVEYOR CERTIFICATION I hereby certify that the well location shown on this plat was plotted from field notes of actual surveys made by me or under my supervision, and that the same is true and correct to the best of my belief.</p>
		<p>Date Surveyed Signature & Seal of Professional Surveyor 7877</p>
		<p>Certificate No. Gary L. Jones 7977 BASIN SURVEYS 24670</p>

JUN 06 2011

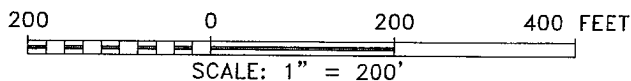
SECTION 13, TOWNSHIP 21 SOUTH, RANGE 37 EAST, N.M.P.M.,
LEA COUNTY, NEW MEXICO.



APACHE CORPORATION
BUNIN #9
ELEV. - 3465'

Lat - N 32°29'00.69"
Long - W 103°06'33.12"
NMSPCE- N 541803.474
E 918811.414
(NAD-83)

Lat - N 32°29'00.27"
Long - W 103°16'31.43"
NMSPCE- N 541744.449
E 877627.343
(NAD-27)



Directions to Location:

FROM THE MILE MARKER 35 OF HWY 18, GO SOUTH
300' TO LEASE ROAD, ON LEASE ROAD GO EAST
WIND NORTH AND BACK EAST 1.0 MILES TO
PROPOSED LEASE ROAD.

APACHE CORPORATION

REF: BUNIN #9 / WELL PAD TOPO

THE BUNIN #9 LOCATED 990'

FROM THE NORTH LINE AND 330' FROM THE EAST LINE OF
SECTION 13, TOWNSHIP 21 SOUTH, RANGE 37 EAST,

N.M.P.M., LEA COUNTY, NEW MEXICO.

BASIN SURVEYS P.O. BOX 1786 - HOBBS, NEW MEXICO

W.O. Number: 24670

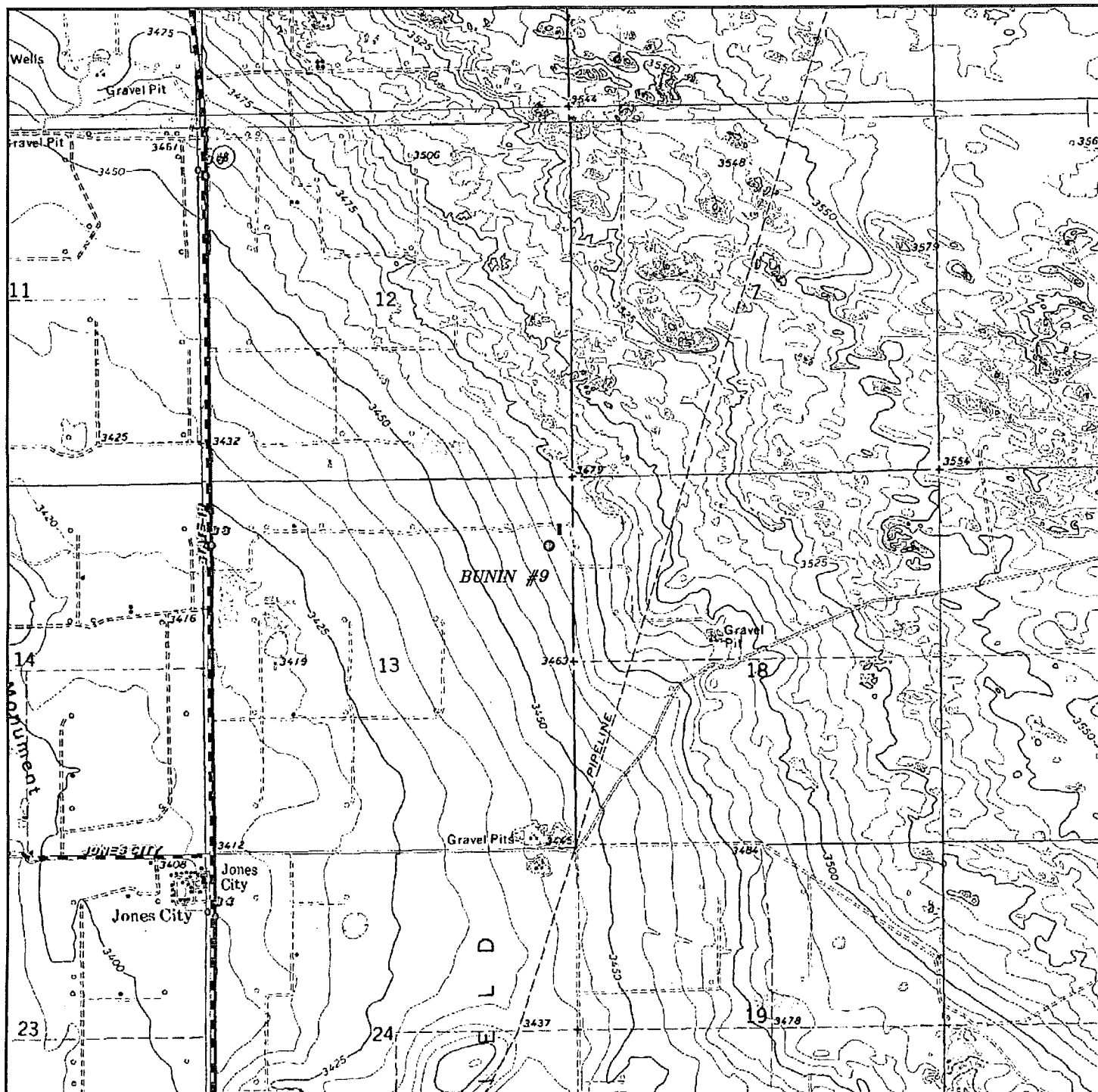
Drawn By: J. SMALL

Date: 05-18-2011

Disk: JMS 24670

Survey Date: 05-12-2011

Sheet 1 of 1 Sheets



BUNIN #9

Located 990' FNL and 330' FEL

Section 13, Township 21 South, Range 37 East,
N.M.P.M., Lea County, New Mexico.

basin
surveys

focused on excellence
in the oilfield

P.O. Box 1786
1120 N. West County Rd.
Hobbs, New Mexico 88241
(575) 393-7316 - Office
(575) 392-2206 - Fax
basinsurveys.com

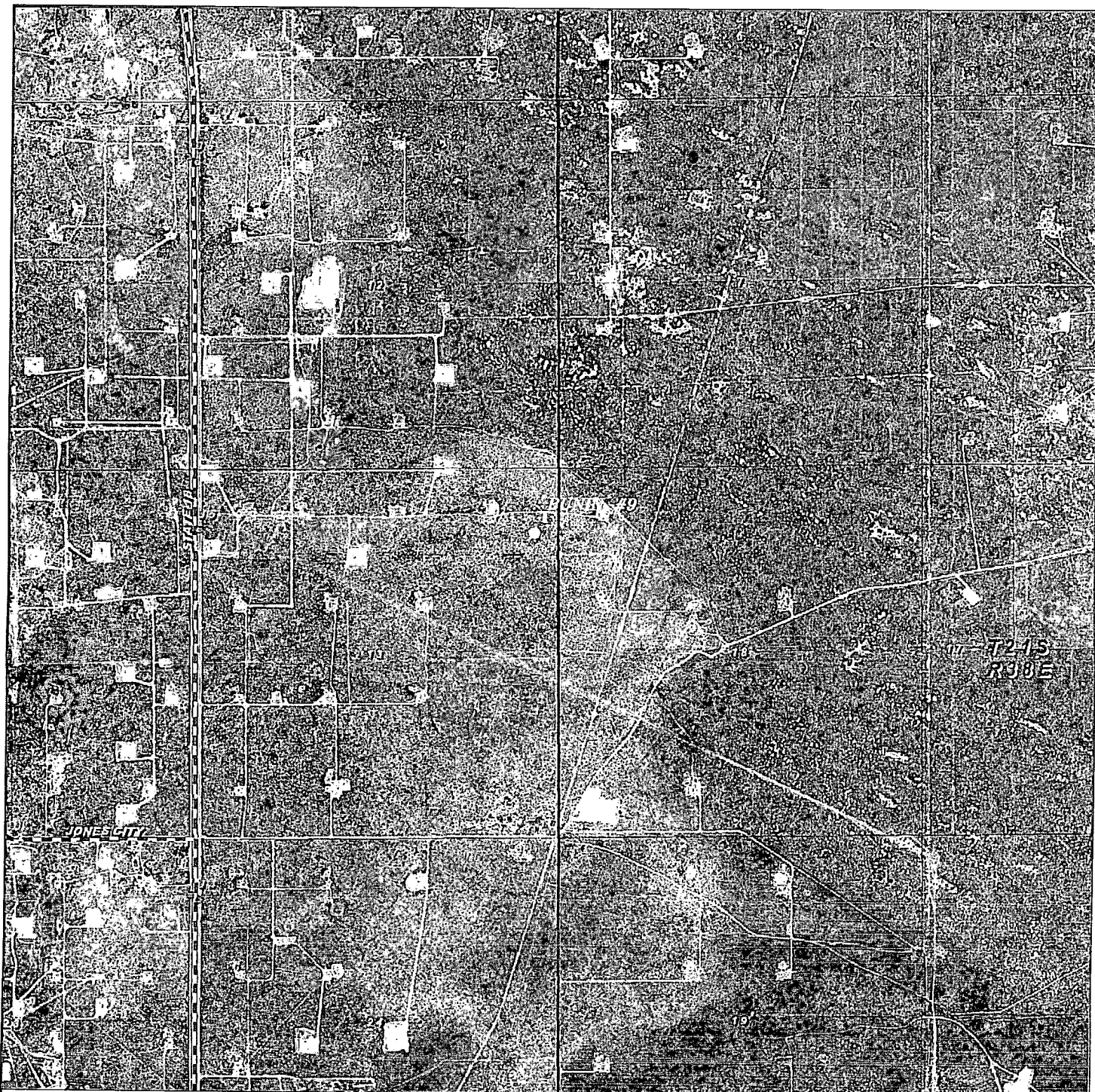
W.O. Number: JMS 24670

Survey Date: 05-12-2011

Scale: 1" = 2000'

Date: 05-18-2011

APACHE
CORPORATION



BUNIN #9

Located 990' FNL and 330' FEL
 Section 13, Township 21 South, Range 37 East,
 N.M.P.M., Lea County, New Mexico.

basin
surveys
 focused on excellence
 in the oilfield

P.O. Box 1786
 1120 N. West County Rd.
 Hobbs, New Mexico 88241
 (575) 393-7316 - Office
 (575) 392-2206 - Fax
basinsurveys.com

W.O. Number: JMS 24670

Scale: 1" = 2000'

YELLOW TINT - USA LAND
 BLUE TINT - STATE LAND
 NATURAL COLOR - FEE LAND

APACHE
CORPORATION