

HOBBS OCD

## DISTRICT I

1625 N. French Dr., Hobbs, NM 88240

## DISTRICT II

1301 W. Grand Avenue, Artesia, NM 88210

## DISTRICT III

1000 Rio Brazos Rd., Aztec, NM 87410

## DISTRICT IV

1220 S. St. Francis Dr., Santa Fe, NM 87505

MAY 25 2011

RECEIVED

State of New Mexico  
Energy, Minerals and Natural Resources DepartmentForm C-102  
Revised July 16, 2010Submit one copy to appropriate  
District OfficeOIL CONSERVATION DIVISION  
1220 South St. Francis Dr.  
Santa Fe, New Mexico 87505

## WELL LOCATION AND ACREAGE DEDICATION PLAT

☐ AMENDED REPORT

API Number <b>30-025-40145</b>	Pool Code <b>96764</b>	Pool Name <b>Monument; ABO, Southeast</b>
Property Code <b>302373</b>	Property Name <b>T. ANDERSON</b>	Well Number <b>6</b>
GRID No. <b>873</b>	Operator Name <b>APACHE CORPORATION</b>	Elevation <b>3547'</b>

## Surface Location

UL or lot No.	Section	Township	Range	Lot Idn	Feet from the	North/South line	Feet from the	East/West line	County
K	8	20 S	37 E		1680	SOUTH	2310	WEST	LEA

## Bottom Hole Location If Different From Surface

UL or lot No.	Section	Township	Range	Lot Idn	Feet from the	North/South line	Feet from the	East/West line	County

Dedicated Acres	Joint or Infill	Consolidation Code	Order No.
<b>40</b>			

NO ALLOWABLE WILL BE ASSIGNED TO THIS COMPLETION UNTIL ALL INTERESTS HAVE BEEN CONSOLIDATED  
OR A NON-STANDARD UNIT HAS BEEN APPROVED BY THE DIVISION

	<p><b>SURFACE LOCATION</b>          Lat - N 32°35'06.21"          Long - W 103°16'28.89"          NMSPCE- N 578197.068          E 867410.727          (NAD-83)</p> <p><b>SURFACE LOCATION</b>          Lat - N 32°35'05.77"          Long - W 103°16'27.17"          NMSPCE- N 578135.095          E 826228.141          (NAD-27)</p>	<p><b>OPERATOR CERTIFICATION</b></p> <p>I hereby certify that the information contained herein is true and complete to the best of my knowledge and belief, and that this organization either owns a working interest or unleased mineral interest in the land including the proposed bottom hole location or has a right to drill this well at this location pursuant to a contract with an owner of such a mineral or working interest, or to a voluntary pooling agreement or a compulsory pooling order heretofore entered by the Division.</p> <p><i>Sorina L. Flores</i> 5/24/11          Signature Date</p> <p><b>Sorina L. Flores</b>          Printed Name</p> <p><i>Sorina.L.Flores@apachecorp.com</i>          Email Address</p>
	<p><b>SURVEYOR CERTIFICATION</b></p> <p>I hereby certify that the well location shown on this plat was plotted from field notes of actual surveys made by me or under my supervision, and that the same is true and correct to the best of my belief.</p> <p> </p> <p>Date Surveyed: <b>MAY 8 2011</b>          Signature &amp; Title of Professional Surveyor: <b>GARY L. JONES</b></p> <p>Certificate No. <b>Gary L. Jones 7977</b></p> <p><b>BASIN SURVEYS 24675</b></p>	

JUN 06 2011

HOBBS OCD

## DISTRICT I

1625 N. French Dr., Hobbs, NM 88240

## DISTRICT II

1301 W. Grand Avenue, Artesia, NM 88210

## DISTRICT III

1000 Rio Brazos Rd., Aztec, NM 87410

## DISTRICT IV

1220 S. St. Francis Dr., Santa Fe, NM 87505

MAY 25 2011

RECEIVED

State of New Mexico  
Energy, Minerals and Natural Resources Department

## OIL CONSERVATION DIVISION

1220 South St. Francis Dr.  
Santa Fe, New Mexico 87505

Form C-102

Revised July 16, 2010

Submit one copy to appropriate  
District Office

## WELL LOCATION AND ACREAGE DEDICATION PLAT

☐ AMENDED REPORT

API Number <b>30-025-40145</b>	Pool Code <b>63840</b>	Pool Name <b>Weir; Drinkard</b>
Property Code <b>302373</b>	Property Name <b>T. ANDERSON</b>	Well Number <b>6</b>
OGRID No. <b>873</b>	Operator Name <b>APACHE CORPORATION</b>	Elevation <b>3547'</b>

## Surface Location

UL or lot No.	Section	Township	Range	Lot Idn	Feet from the	North/South line	Feet from the	East/West line	County
K	8	20 S	37 E		1680	SOUTH	2310	WEST	LEA

## Bottom Hole Location If Different From Surface

UL or lot No.	Section	Township	Range	Lot Idn	Feet from the	North/South line	Feet from the	East/West line	County
Dedicated Acres <b>40</b>	Joint or Infill	Consolidation Code	Order No.						

NO ALLOWABLE WILL BE ASSIGNED TO THIS COMPLETION UNTIL ALL INTERESTS HAVE BEEN CONSOLIDATED  
OR A NON-STANDARD UNIT HAS BEEN APPROVED BY THE DIVISION

	<b>SURFACE LOCATION</b> Lat - N 32°35'06.21" Long - W 103°16'28.89" NMSPCE- N 578197.068 E 867410.727 (NAD-83)	<b>OPERATOR CERTIFICATION</b> I hereby certify that the information contained herein is true and complete to the best of my knowledge and belief, and that this organization either owns a working interest or unleased mineral interest in the land including the proposed bottom hole location or has a right to drill this well at this location pursuant to a contract with an owner of such a mineral or working interest, or to a voluntary pooling agreement or a compulsory pooling order heretofore entered by the Division. <i>Sorina L. Flores</i> 5/24/11 Signature Date <b>Sorina L. Flores</b> Printed Name <b>Sorina.Flores@apachecorp.com</b> Email Address
	<b>SURFACE LOCATION</b> Lat - N 32°35'05.77" Long - W 103°16'27.17" NMSPCE- N 578135.095 E 826228.141 (NAD-27)	<b>SURVEYOR CERTIFICATION</b> I hereby certify that the well location shown on this plat was plotted from field notes of actual surveys made by me or under my supervision, and that the same is true and correct to the best of my belief.
	Certificate No. Gary L. Jones 7977 BASIN SURVEYS 24675	

JUN 06 2011

## DISTRICT I

1625 N. French Dr., Hobbs, NM 88240

## DISTRICT II

1301 W. Grand Avenue, Artesia, NM 88210

## DISTRICT III

1000 Rio Brazos Rd., Aztec, NM 87001

## DISTRICT IV

1220 S. St. Francis Dr., Santa Fe, NM 87505

HOBBS OCD

MAY 25 2011

RECEIVED

State of New Mexico  
Energy, Minerals and Natural Resources Department

## OIL CONSERVATION DIVISION

1220 South St. Francis Dr.  
Santa Fe, New Mexico 87505

Form C-102

Revised July 16, 2010

Submit one copy to appropriate  
District Office

## WELL LOCATION AND ACREAGE DEDICATION PLAT

☐ AMENDED REPORT

API Number <b>30-025-40145</b>	Pool Code <b>47090</b>	Pool Name <b>Monument; Tubb</b>
Property Code <b>302373</b>	Property Name <b>T. ANDERSON</b>	Well Number <b>6</b>
OGRID No. <b>873</b>	Operator Name <b>APACHE CORPORATION</b>	Elevation <b>3547'</b>

## Surface Location

UL or lot No.	Section	Township	Range	Lot Idn	Feet from the	North/South line	Feet from the	East/West line	County
K	8	20 S	37 E		1680	SOUTH	2310	WEST	LEA

## Bottom Hole Location If Different From Surface

UL or lot No.	Section	Township	Range	Lot Idn	Feet from the	North/South line	Feet from the	East/West line	County

Dedicated Acres <b>80</b>	Joint or Infill	Consolidation Code	Order No.
------------------------------	-----------------	--------------------	-----------

NO ALLOWABLE WILL BE ASSIGNED TO THIS COMPLETION UNTIL ALL INTERESTS HAVE BEEN CONSOLIDATED  
OR A NON-STANDARD UNIT HAS BEEN APPROVED BY THE DIVISION

	<p><b>SURFACE LOCATION</b>          Lat - N 32°35'06.21"          Long - W 103°16'28.89"          NAD83          NADSPCE- N 578197.068          E 867410.727          (NAD-83)</p> <p><b>SURFACE LOCATION</b>          Lat - N 32°35'05.77"          Long - W 103°16'27.17"          NADSPCE- N 578135.095          E 826228.141          (NAD-27)</p>	<p><b>OPERATOR CERTIFICATION</b>          I hereby certify that the information contained herein is true and complete to the best of my knowledge and belief, and that this organization either owns a working interest or unleased mineral interest in the land including the proposed bottom hole location or has a right to drill this well at this location pursuant to a contract with an owner of such a mineral or working interest, or to a voluntary pooling agreement or a compulsory pooling order heretofore entered by the Division.</p> <p><i>Sorina L. Flores</i> 5/24/11          Signature Date</p> <p><i>Sorina L. Flores</i>          Printed Name</p> <p><i>Sorina.Flores@apachecorp.com</i>          Email Address</p>
	<p><b>SURVEYOR CERTIFICATION</b>          I hereby certify that the well location shown on this plat was plotted from field notes of actual surveys made by me or under my supervision, and that the same is true and correct to the best of my belief.</p>	
	<p>Date Surveyed <i>MAY 24 2011</i>          Signature &amp; Seal of Professional Surveyor <i>[Signature]</i>          7977</p>	
	<p>Certificate No. Gary L. Jones 7977</p> <p>BASIN SURVEYS 24675</p>	

JUN 06 2011

DISTRICT I  
1625 N. French Dr., Hobbs, NM 88240

DISTRICT II  
1301 W. Grand Avenue, Artesia, NM 88210

DISTRICT III  
1000 Rio Brazos Rd., Aztec, NM 87410

DISTRICT IV  
1220 S. St. Francis Dr., Santa Fe, NM 87505

HOBBS OCD

MAY 25 2011

RECEIVED

State of New Mexico  
Energy, Minerals and Natural Resources Department

OIL CONSERVATION DIVISION  
1220 South St. Francis Dr.  
Santa Fe, New Mexico 87505

Form C-102  
Revised July 16, 2010

Submit one copy to appropriate  
District Office

WELL LOCATION AND ACREAGE DEDICATION PLAT

☐ AMENDED REPORT

API Number <b>30-025-40145</b>	Pool Code <b>46990</b>	Pool Name <b>Monument; Blinebry</b>
Property Code <b>302373</b>	Property Name <b>T. ANDERSON</b>	Well Number <b>6</b>
OGRID No. <b>873</b>	Operator Name <b>APACHE CORPORATION</b>	Elevation <b>3547'</b>

Surface Location

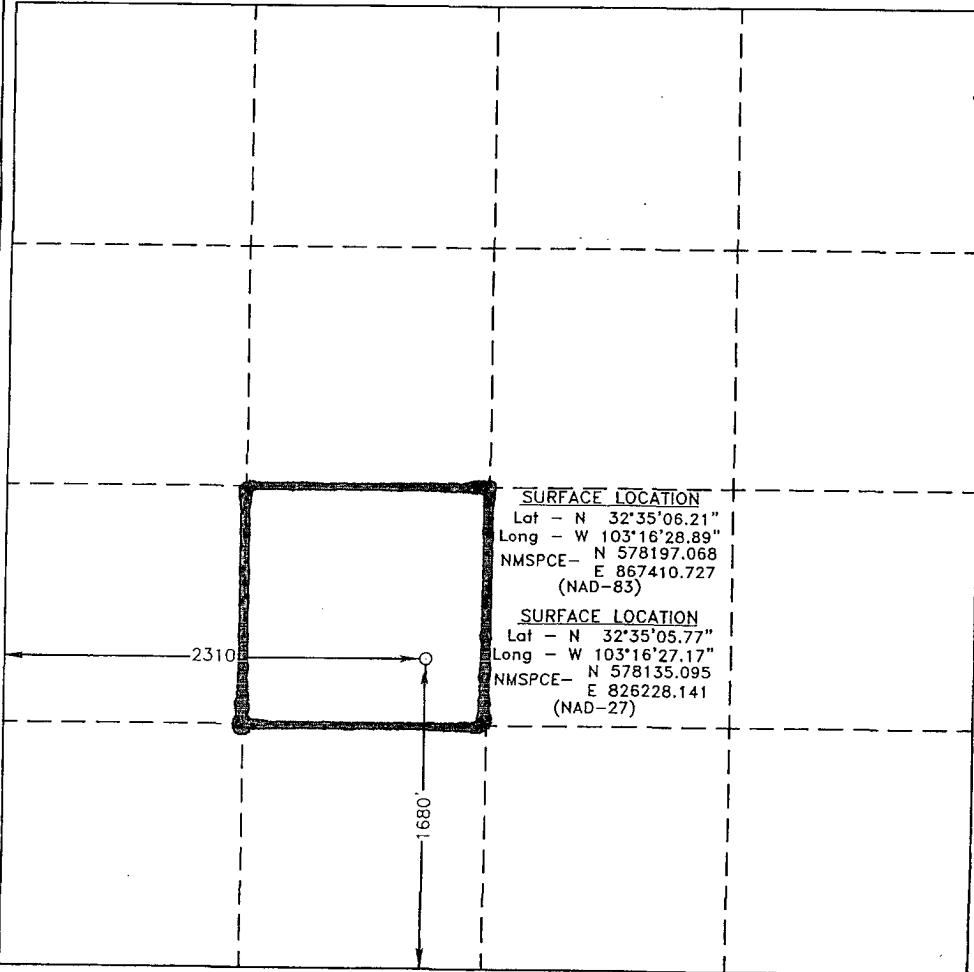
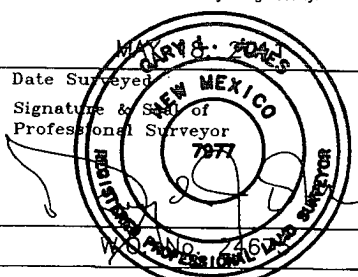
UL or lot No.	Section	Township	Range	Lot Idn	Feet from the	North/South line	Feet from the	East/West line	County
K	8	20 S	37 E		1680	SOUTH	2310	WEST	LEA

Bottom Hole Location If Different From Surface

UL or lot No.	Section	Township	Range	Lot Idn	Feet from the	North/South line	Feet from the	East/West line	County

Dedicated Acres	Joint or Infill	Consolidation Code	Order No.
<b>40</b>			

NO ALLOWABLE WILL BE ASSIGNED TO THIS COMPLETION UNTIL ALL INTERESTS HAVE BEEN CONSOLIDATED  
OR A NON-STANDARD UNIT HAS BEEN APPROVED BY THE DIVISION

	<p><b>OPERATOR CERTIFICATION</b></p> <p>I hereby certify that the information contained herein is true and complete to the best of my knowledge and belief, and that this organization either owns a working interest or unleased mineral interest in the land including the proposed bottom hole location or has a right to drill this well at this location pursuant to a contract with an owner of such a mineral or working interest, or to a voluntary pooling agreement or a compulsory pooling order heretofore entered by the division.</p> <p><i>Sorina L. Flores</i> 5/24/11 Signature Date</p> <p><i>Sorina L. Flores</i> Printed Name</p> <p><i>Sorina.Flores@apachecorp.com</i> Email Address</p>
	<p><b>SURVEYOR CERTIFICATION</b></p> <p>I hereby certify that the well location shown on this plat was plotted from field notes of actual surveys made by me or under my supervision, and that the same is true and correct to the best of my belief.</p> <p></p> <p>Date Surveyed Signature &amp; Seal of Professional Surveyor</p> <p>Certificate No. Gary L. Jones 7977</p> <p>BASIN SURVEYS 24675</p>

JUN 06 2011

HOBBS OCD

JW

## DISTRICT I

1625 N. French Dr., Hobbs, NM 88240

## DISTRICT II

1301 W. Grand Avenue, Artesia, NM 88210

## DISTRICT III

1000 Rio Brazos Rd., Aztec, NM 87410

## DISTRICT IV

1220 S. St. Francis Dr., Santa Fe, NM 87505

MAY 25 2011

State of New Mexico  
Energy, Minerals and Natural Resources Department

Form C-102

Revised July 16, 2010

Submit one copy to appropriate  
District OfficeRECEIVED OIL CONSERVATION DIVISION  
1220 South St. Francis Dr.  
Santa Fe, New Mexico 87505

## WELL LOCATION AND ACREAGE DEDICATION PLAT

☐ AMENDED REPORT

API Number <b>30-025-40145</b>	Pool Code <b>47080</b>	Pool Name <b>Monument; Paddock</b>
Property Code <b>302373</b>	Property Name <b>T. ANDERSON</b>	Well Number <b>6</b>
OGRID No. <b>873</b>	Operator Name <b>APACHE CORPORATION</b>	Elevation <b>3547'</b>

## Surface Location

UL or lot No.	Section	Township	Range	Lot Idn	Feet from the	North/South line	Feet from the	East/West line	County
<b>K</b>	<b>8</b>	<b>20 S</b>	<b>37 E</b>		<b>1680</b>	<b>SOUTH</b>	<b>2310</b>	<b>WEST</b>	<b>LEA</b>

## Bottom Hole Location If Different From Surface

UL or lot No.	Section	Township	Range	Lot Idn	Feet from the	North/South line	Feet from the	East/West line	County

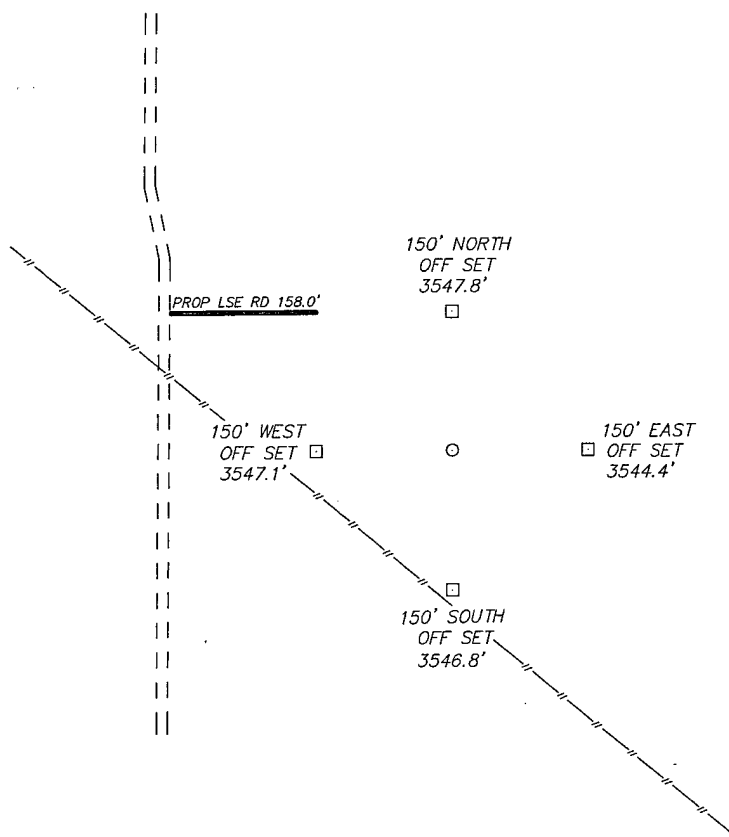
Dedicated Acres <b>40</b>	Joint or Infill	Consolidation Code	Order No.
------------------------------	-----------------	--------------------	-----------

NO ALLOWABLE WILL BE ASSIGNED TO THIS COMPLETION UNTIL ALL INTERESTS HAVE BEEN CONSOLIDATED  
OR A NON-STANDARD UNIT HAS BEEN APPROVED BY THE DIVISION

	<b>SURFACE LOCATION</b> Lat - N 32°35'06.21" Long - W 103°16'28.89" NMSPCE- N 578197.068 E 867410.727 (NAD-83)	<b>OPERATOR CERTIFICATION</b> I hereby certify that the information contained herein is true and complete to the best of my knowledge and belief, and that this organization either owns a working interest or unleased mineral interest in the land including the proposed bottom hole location or has a right to drill this well at this location pursuant to a contract with an owner of such a mineral or working interest, or to a voluntary pooling agreement or a compulsory pooling order heretofore entered by the division. <i>Sorina L. Flores</i> 5/24/11 Signature Date <b>Sorina L. Flores</b> Printed Name <b>Sorina.L.Flores@apachecorp.com</b> Email Address
	<b>SURFACE LOCATION</b> Lat - N 32°35'05.77" Long - W 103°16'27.17" NMSPCE- N 578135.095 E 826228.141 (NAD-27)	<b>SURVEYOR CERTIFICATION</b> I hereby certify that the well location shown on this plat was plotted from field notes of actual surveys made by me or under my supervision, and that the same is true and correct to the best of my belief.
	Date Surveyed Signature & Seal of Professional Surveyor 	Certificate No. Gary L. Jones 7977 BASIN SURVEYS 24675

JUN 06 2011

SECTION 8, TOWNSHIP 20 SOUTH, RANGE 37 EAST, N.M.P.M.,  
LEA COUNTY, NEW MEXICO.



APACHE CORPORATION  
T. ANDERSON #6  
ELEV. - 3547'

Lat - N 32°35'06.21"  
Long - W 103°16'28.89"  
NMSPCE- N 578197.068  
E 867410.727  
(NAD-83)

Lat - N 32°35'05.77"  
Long - W 103°16'27.17"  
NMSPCE- N 578135.095  
E 826228.141  
(NAD-27)

200 0 200 400 FEET  
SCALE: 1" = 200'

Directions to Location:

FROM THE MILE MARKER 8 OF HWY 8, GO SOUTH  
300' TO LEASE ROAD, GO WEST ON LEASE ROAD  
FOR 0.5 MILES TO A "Y", TAKE LEFT FORK AND GO  
0.1 MILES TO LEASE ROAD, GO SOUTH 0.2 MILES TO  
PROPOSED LEASE ROAD.

**BASIN SURVEYS** P.O. BOX 1786-HOBBS, NEW MEXICO

W.O. Number: 24675 Drawn By: J. SMALL

Date: 05-19-2011 Disk: JMS 24675

**APACHE CORPORATION**

REF: T. ANDERSON #6 / WELL PAD TOPO

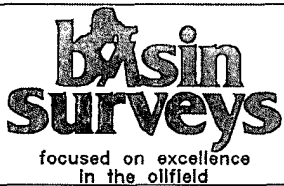
THE T. ANDERSON #6 LOCATED 1680'

FROM THE SOUTH LINE AND 2310' FROM THE WEST LINE OF  
SECTION 8, TOWNSHIP 20 SOUTH, RANGE 37 EAST,  
N.M.P.M., LEA COUNTY, NEW MEXICO.

Survey Date: 05-18-2011 Sheet 1 of 1 Sheets



**T. ANDERSON #6**  
 Located 1680' FSL and 2310' FWL  
 Section 8, Township 20 South, Range 37 East,  
 N.M.P.M., Lea County, New Mexico.



P.O. Box 1786  
 1120 N. West County Rd.  
 Hobbs, New Mexico 88241  
 (575) 393-7316 - Office  
 (575) 392-2206 - Fax  
 basinsurveys.com

W.O. Number: JMS 24675

Survey Date: 05-18-2011

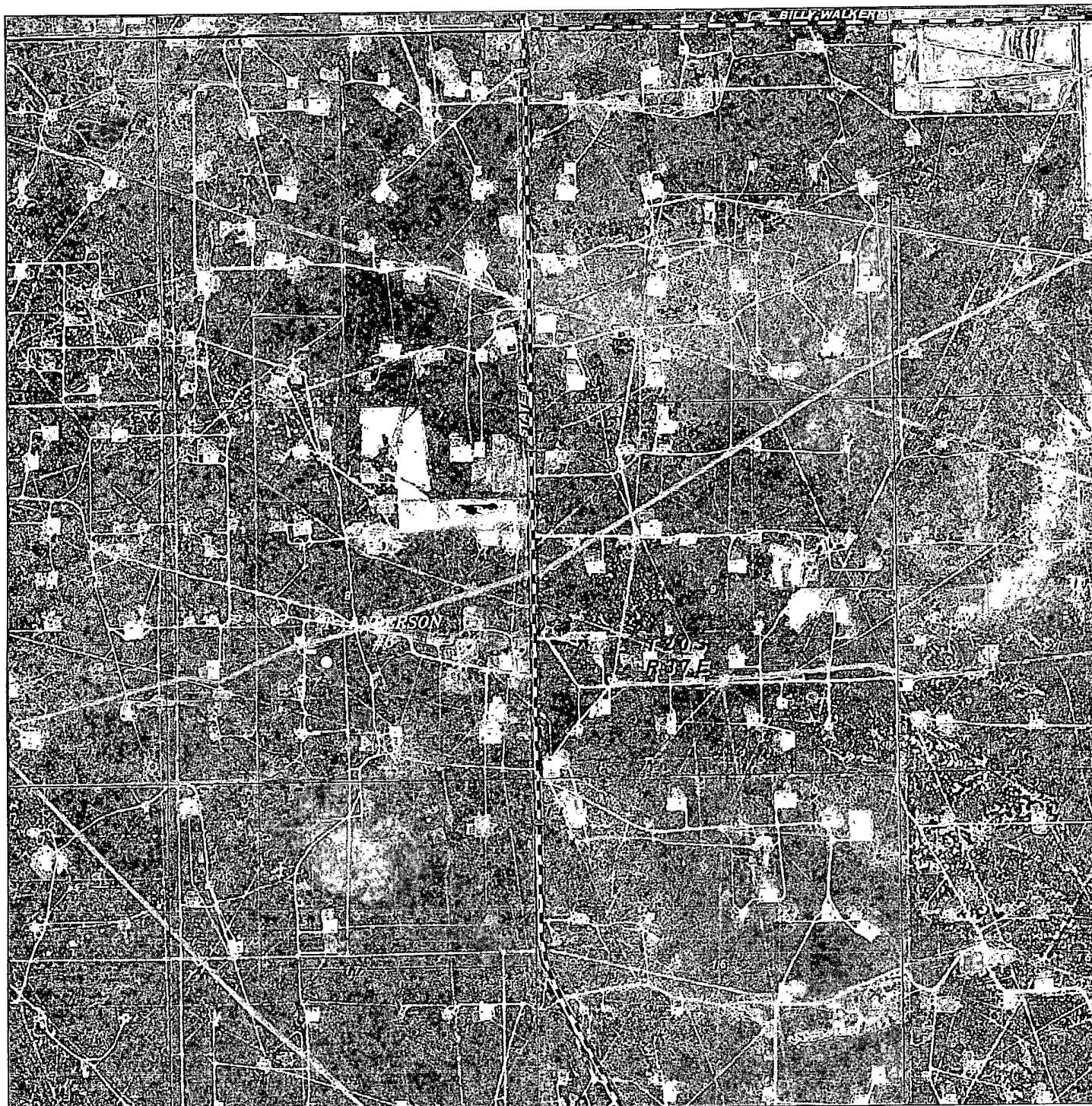
Scale: 1" = 2000'

Date: 05-19-2011

**APACHE  
 CORPORATION**







T. ANDERSON #6  
Located 1680' FSL and 2310' FWL  
Section 8, Township 20 South, Range 37 East,  
N.M.P.M., Lea County, New Mexico.

**basin**  
**surveys**  
focused on excellence  
in the oilfield

P.O. Box 1786  
1120 N. West County Rd.  
Hobbs, New Mexico 88241  
(575) 393-7316 - Office  
(575) 392-2206 - Fax  
basinsurveys.com

W.O. Number: JMS 24675

Scale: 1" = 2000'

YELLOW TINT - USA LAND  
BLUE TINT - STATE LAND  
NATURAL COLOR - FEE LAND

APACHE  
CORPORATION