

MAY 19 2011

Form C-102
Revised October 12, 2005
Submit to Appropriate District Office
State Lease- 4 Copies
Fee Lease- 3 Copies

☐ AMENDED REPORT

RECEIVED

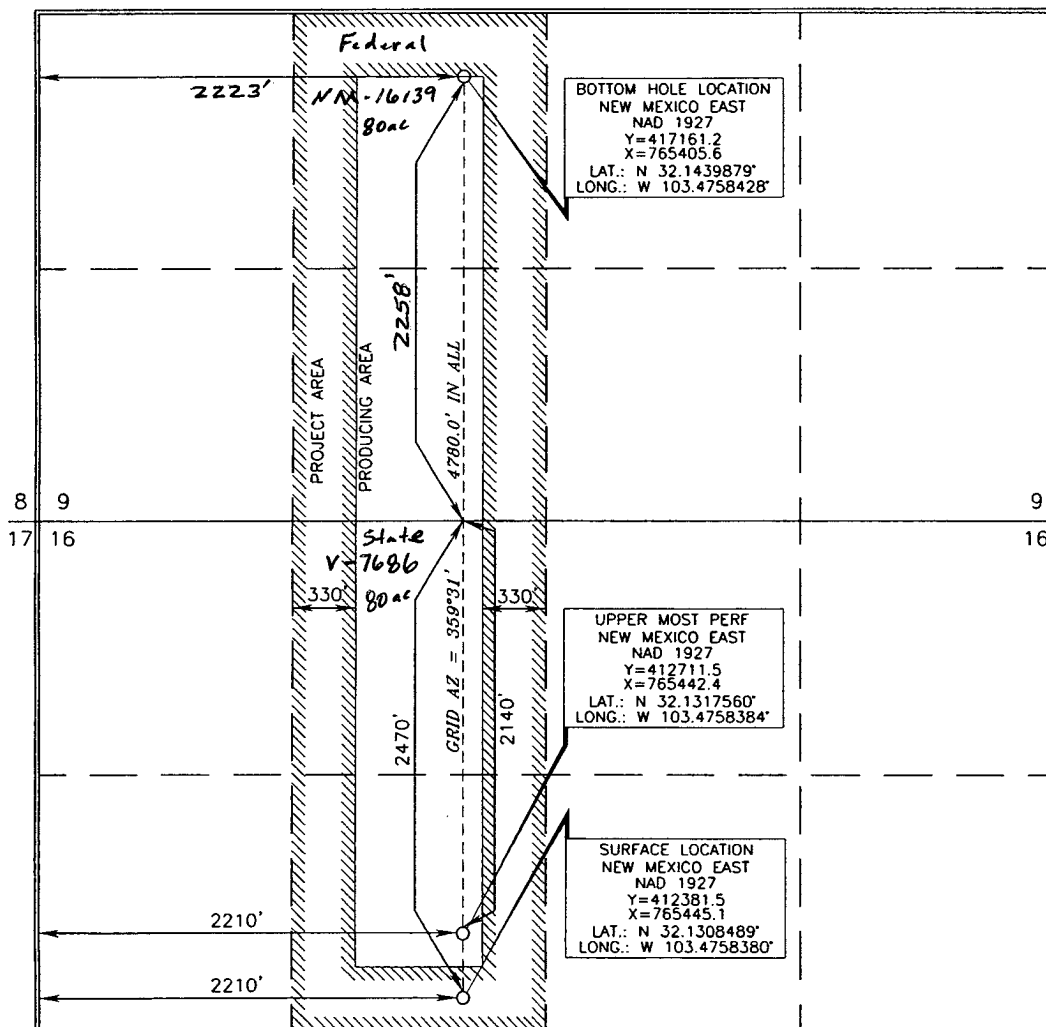
API Number 30-025- 39983 ✓	RECEIVED Pool Code 51020 ✓	Pool Name Red Hills; Bone Spring
Property Code 38409 ✓	Property Name JOLY 16 STATE COM -	Well Number 1H ✓
OGRID No. 7377 ✓	Operator Name EOG RESOURCES, INC. -	Elevation 3350.8'

UL or lot no.	Section	Township	Range	Lot Idn	Feet from the	North/South line	Feet from the	East/West line	County
F	16	25 SOUTH	34 EAST, N.M.P.M.		2470'	NORTH	2210'	WEST	LEA

UL or lot no.	Section	Township	Range	Lot Idn	Feet from the	North/South line	Feet from the	East/West line	County
<i>K</i>	<i>9</i>	<i>25 SOUTH</i>	<i>34 EAST, N.M.P.M.</i>		<i>2258</i>	<i>SOUTH</i>	<i>2223</i>	<i>WEST</i>	<i>LEA</i>

Dedicated Acres	Joint or Infill	Consolidation Code	Order No.
160			

No allowable will be assigned to this completion until all interests have been consolidated or a non-standard unit has been approved by the division.



I hereby certify that the information contained herein is true and complete to the best of my knowledge and belief, and that this organization either owns a working interest or unleased mineral interest in the land including the proposed bottom hole location or has a right to drill this well at this location pursuant to a contract with an owner of such a mineral or working interest, or to a voluntary pooling agreement or a compulsory pooling order heretofore entered by the division.

Signature Ann D. Mott Date 8/20/2010

Donny G. Glanton
Printed Name

I hereby certify that the well location shown on this plat was plotted from field notes of actual surveys made by me or under my supervision and that the same is true and correct to the best of my belief.

15079
AUGUST 6, 2010
Date of Survey

Signature and Seal of
Professional Supervisor
Termy G. Asel 8/13/2011
Certificate Number 15079

WO# 100806WL (KA)