

Submit 3 Copies To Appropriate
District Office
District I
1625 N. French Dr., Hobbs, NM 88240
District II
1301 W. Grand Ave., Artesia, NM
88210
District III
1000 Rio Brazos Rd., Aztec, NM
87410
District IV
1220 S. St. Francis Dr., Santa Fe, NM
87505

State of New Mexico
Energy, Minerals and Natural Resources

Form C-103
May 27, 2004

HOBBS OGD

JUN 09 2011

RECEIVED

CONSERVATION DIVISION
1220 South St. Francis Dr.
Santa Fe, NM 87505

WELL API NO. 30-025-10499
5. Indicate Type of Lease STATE <input type="checkbox"/> FEE <input checked="" type="checkbox"/>
6. State Oil & Gas Lease No.
7. Lease Name or Unit Agreement Name LANGLIE MATTIX PENROSE SAND UNIT
8. Well Number 252
9. OGRID Number 240974
10. Pool name or Wildcat Langlie Mattix; 7 Rvrs-Qn-Grayburg
11. Elevation (Show whether DR, RKB, RT, GR, etc.) 3344' GL 3352' KB
Pit or Below-grade Tank Application <input type="checkbox"/> or Closure <input type="checkbox"/>
Pit type _____ Depth to Groundwater _____ Distance from nearest fresh water well _____ Distance from nearest surface water _____
Pit Liner Thickness: _____ mil Below-Grade Tank: Volume _____ bbls; Construction Material _____

12. Check Appropriate Box to Indicate Nature of Notice, Report or Other Data

NOTICE OF INTENTION TO:

PERFORM REMEDIAL WORK ☐ PLUG AND ABANDON ☐
TEMPORARILY ABANDON ☐ CHANGE PLANS ☐
PULL OR ALTER CASING ☐ MULTIPLE COMPL ☐
OTHER: ☐

SUBSEQUENT REPORT OF:

REMEDIAL WORK ☐ ALTERING CASING ☐
COMMENCE DRILLING OPNS. ☐ P AND A ☐
CASING/CEMENT JOB ☐
OTHER: ☒ Replace BH Cement Plug, Acidize & MIT

13. Describe proposed or completed operations. (Clearly state all pertinent details, and give pertinent dates, including estimated date of starting any proposed work). SEE RULE 1103. For Multiple Completions: Attach wellbore diagram of proposed completion or recompletion.

See attached for completed operations.

06/03/11 – Notified Mark Whitaker for approval to run MIT chart. Pressure casing to 600#, held good.
Not witnessed by OCD. Chart attached.

I hereby certify that the information above is true and complete to the best of my knowledge and belief. I further certify that any pit or below-grade tank has been/will be constructed or closed according to NMOCD guidelines ☐, a general permit ☐ or an (attached) alternative OCD-approved plan ☐.

SIGNATURE Berry Johnson TITLE: Production Superintendent

DATE: 06/08/11

Type or print name Berry Johnson

E-mail address:

Telephone No. (432) 689-5200

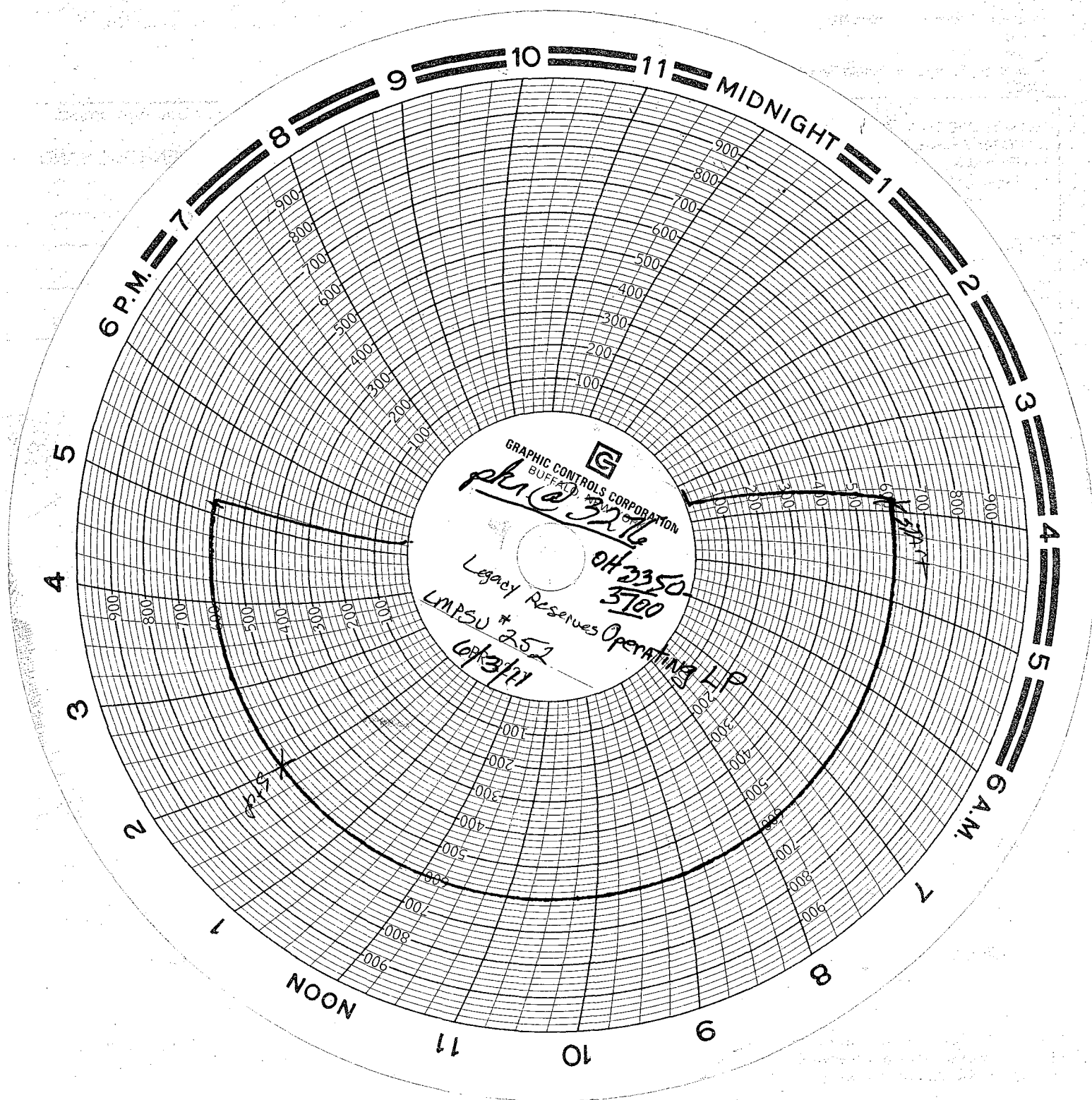
For State Use Only

APPROVED

BY: Cary M. Hill TITLE: DISTRICT 1 SUPERVISOR

DATE: JUN 10 2011

Conditions of Approval (if any):



SEAN J Coy (Basic)

06-03-2011

Start 10:00am Stop 10:45am

Legacy Reserves
DAILY OPERATIONS REPORT

LMPSU # 252

Printed Jun 7, 2011 Page 1 of 2

LMPSU # 252

Lea Co., NM

BOLO ID: 300029.25.02

Zone: 1 Field: Langlie Mattix

AFE # 411016 - \$56,000.00

Drill out and Install new cement plug in open hole and acidize-- EXPENSE W/O(881)

May 18, 2011 Wednesday (Day 1)

MIRU Lucky Well service. Install 8 5/8 x 7" Larkin Tubing Head. While attempting to Release Johnson 101-S packer. Tubing parted at slip marks on top joint. RIH w/ overshot, latch onto parted tubing at 378'. Pull 2 joints. SDFN. Note. Tubing plugged, pulling wet string, shut down to wait on Envirovat.

Daily Cost: \$20,500

Cum. Cost: \$20,500

May 19, 2011 Thursday (Day 2)

Install Envirovat. POH laying down 2 3/8 Salta lined tubing, tubing is junk. Wellhead moving around on casing. Remove wellhead found casing threads striped. Shut in well. SDFN.

Daily Cost: \$11,000

Cum. Cost: \$31,500

May 20, 2011 Friday (Day 3)

RIH w/7" RBP, set at 368'. Circulate hole w/40 BBL 2% KCL. POH w/retrieving head. Cut off 7" casing w/bad threads. Weld on 7" Bell nipple. Install BOP. Test casing to 500#, no leak off. RIH w/retrieving head, Release RBP. POH. RIH w/ 6 1/4 bit, drill collars and tag fill at 3685'. Clean out to 3617'. Circulate hole clean, circulating out Gravel. Pull 6 1/4 bit into 7" casing. SDFW.

Daily Cost: \$13,300

Cum. Cost: \$44,800

May 23, 2011 Monday (Day 4)

Resume drilling out gravel plug from 3617' to 4088' w/6 1/4 bit. Circulate hole clean. POH. SDFN.

Daily Cost: \$10,670

Cum. Cost: \$55,470

May 24, 2011 Tuesday (Day 5)

Rig up Renegade wireline. RIH w/Caliper log tools. Tools set down at 3670'. POH. RIH w/weight bar. Tag at 3670', work weight bar through spot to 4078'. POH RIH w/Caliper to 4078'. Log from 4078' to 3600'. At 3600' caliper showing hole larger than it maximum 15". Shut down due to high winds.

Daily Cost: \$17,500

Cum. Cost: \$72,970

May 25, 2011 Wednesday (Day 6)

RIH w/2 7/8 workstring to 4078'. Rig up BJ Services. Pump 100 sx Class C w/0.5% BA-10A, 1% CD-32, 0.1% R-21 at 15.8#. POH w/workstring. Pressure up to 500# on cement plug. Shut down until Friday for cement.

Daily Cost: \$20,600

Cum. Cost: \$93,570

May 26, 2011 Thursday (Day 7)

Shut down for cement.

Daily Cost: \$7,100

Cum. Cost: \$100,670

May 27, 2011 Friday (Day 8)

RIH w/6 1/4 bit. Tag cement at 3694'. Drill hard cement to 3698'. Circulate hole clean. POH. Rig down reverse unit. RIH w/ 2 7/8 tubing to 3300'. Shut down for memorial day weekend.

Daily Cost: \$12,100

Cum. Cost: \$112,770

Legacy Reserves
DAILY OPERATIONS REPORT

LMPSU # 252

Printed Jun 7, 2011 Page 2 of 2

LMPSU # 252

Lea Co., NM

BOLO ID: 300029.25.02

Zone: 1 Field: Langlie Mattix

May 31, 2011 Tuesday (Day 9)

Finish RIH w/ 2 7/8 tubing to 3625'. Rig up Rising Star. Spot 3000 gal 15% NEFE HCL in open Hole, Note procedure called for 2000 gal Rising Stars Mistake. POH. RIH w/ 7" H-D packer to 3275', Reverse 15 BBL, set packer. Acidize w/ 3000 gal 15% NEFE CRA HCL and 3000# rock salt in 3000 gal gel brine at avg rate 5 BPM at avg 1725#. No show of blocking action from rock salt. ISIP 1640#, 5 min 1380#, 10 min 1330#, 15 min 1300#. Load to recover 378 BBL. Shut in well one hour, open pressure 950#. Flowed back 10 BBL. Release packer. POH laying down 2 7/8 work string. SDFN. NOTE: on first stage block in tubing starting acid Rising Star had mechanical problems, flushed tubing w/2% KCL shut down, resolved problem. Finish acid/block job.

Daily Cost: \$31,200

Cum. Cost: \$143,970

Jun 1, 2011 Wednesday (Day 10)

RIH w/ 7" x 2 3/8 Nickel plated AS1X 10-K packer w/1.78 stanliss profile w/stainless T-2 on/off tool. Set packer at 3276 w/ 101 joints 2 3/8 IPC tubing. Release on/off tool, circulate 105 BBL 2% KCL packer fluid. Latch onto packer. Test casing to 500# for 30 min. good test. RDMO. SDFN.

Daily Cost: \$49,900

Cum. Cost: \$193,870

Jun 3, 2011 Friday (Day 11)

Set up to MIT w/OCD. Mark Whitaker called & could not witness, ok to run MIT Chart. Pressure Csg. to 600#, held good.----- Sent chart to Midland office to file w/OCD for approval to Return well to Injection.

Daily Cost:

Cum. Cost: \$193,870

WELLBORE SCHEMATIC

Well Name & No.:	Langlie Mattix Penrose Sand Unit # 252			
Field:	Langlie Mattix (7Rivers/Queen/Grayburg) - Penrose Sand			
Location:	1650' FNL x 330' FEL, Sec. 28, Unit Letter H, T-22-S, R-37-E			
County:	Lea	State:	NM	API #: 30-025-10499
GR Elevation:	3344.0	Spud Date:	08/15/36	
KB Correction:	8.0	Drl Compl. Date:	5/12/37-Cable Tool	
KB Elevation	3352.0	Original Well Name:	A.L. Christmas "A" #2	
		Original Operator:	Repollo Oil Co.	

