

District I  
1625 N. French Dr., Hobbs, NM 88240  
District II  
811 S. 1st Street, Artesia, NM 88210  
District III  
1000 Rio Brazos Rd., Aztec, NM 87410  
District IV  
2040 South Pacheco, Santa Fe, NM 87505

State of New Mexico  
Energy, Minerals & Natural Resources

Form C-101  
Revised March 17, 1999

Oil Conservation Division  
2040 South Pacheco  
Santa Fe, NM 87505

Submit to appropriate District Office  
State Lease - 6 Copies  
Fee Lease - 5 Copies

☐ AMENDED REPORT

APPLICATION FOR PERMIT TO DRILL, RE-ENTER, DEEPEN, PLUGBACK, OR ADD A ZONE

<sup>1</sup> Operator Name and Address <b>Chevron U.S.A. Inc.</b> <b>15 Smith Road - Midland, Texas 79705</b>		<sup>2</sup> OGRID Number <b>4323</b>
		<sup>3</sup> API Number <b>30- 025-02259</b>
<sup>4</sup> Property Code <b>30022</b>	<sup>5</sup> Property Name <b>Vacuum Grayburg San Andres Unit</b>	<sup>6</sup> Well No. <b>12</b>

<sup>7</sup> Surface Location

UL or lot no.	Section	Township	Range	Lot. Idn	Feet from the	North/South Line	Feet from the	East/West line	County
<b>O</b>	<b>1</b>	<b>18-S</b>	<b>34-E</b>		<b>660</b>	<b>South</b>	<b>1980</b>	<b>East</b>	<b>Lea</b>

<sup>8</sup> Proposed Bottom Hole Location If Different From Surface

UL or lot no.	Section	Township	Range	Lot. Idn	Feet from the	North/South Line	Feet from the	East/West line	County
<b>M</b>	<b>1</b>	<b>18-S</b>	<b>34-E</b>		<b>473</b>	<b>South</b>	<b>836</b>	<b>West</b>	<b>Lea</b>

<sup>9</sup> Proposed Pool 1

**Vacuum Grayburg San Andres**

<sup>10</sup> Proposed Pool 2

<sup>11</sup> Work Type Code <b>P (Horizontal)</b>	<sup>12</sup> Well Type Code <b>O</b>	<sup>13</sup> Cable/Rotary <b>Rotary</b>	<sup>14</sup> Lease Type Code <b>S</b>	<sup>15</sup> Ground Level Elevation <b>3987'</b>
<sup>16</sup> Multiple <b>NO</b>	<sup>17</sup> Proposed Depth <b>See #22 Below</b>	<sup>18</sup> Formation <b>San Andres</b>	<sup>19</sup> Contractor	<sup>20</sup> Spud Date <b>3/2/04</b>

<sup>21</sup> Proposed Casing and Cement Program

Hole Size	Casing Size	Casing weight/foot	Setting Depth	Sacks of Cement	Estimated TOC
<b>No Change</b>					

Permit Expires 1 Year From Approval  
Date Unless Drilling Underway  
Horizontal

<sup>22</sup> Describe the proposed program. If this application is to DEEPEN or PLUG BACK, give the data on the present productive zone and proposed new productive zone.

Describe the blowout prevention program, if any. Use additional sheets if necessary.

**Chevron U.S.A. Inc. intends to drill a horizontal lateral from the existing vertical well bore.**

**Kick Off Point: 4157'**

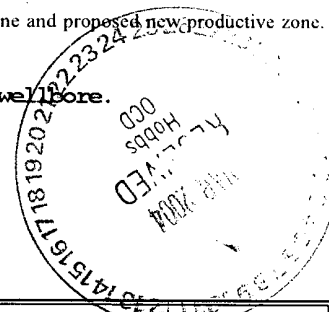
**Top of Window: 4147'**

**Bottom of Window: 4154'**

**Target Interval: 4302-4427' OH**

**Total Depth: 7022' MD; 4427' TVD**

**Penetration Point Location: T18S, R34E, Sec. 1 - 660' FSL & 2180' FEL**



<sup>23</sup> I hereby certify that the information given above is true and complete to the best of my knowledge and belief.

Signature: *Laura Skinner*

Printed name: **Laura Skinner**

Title: **Regulatory Specialist**

Date: **3/2/04**

Phone: **(432) 687-7355**

OIL CONSERVATION DIVISION

Approved by: *[Signature]*

Title:

Approval Date: **MAR 10 2004**

**PETROLEUM ENGINEER**

Expiration Date:

Conditions of Approval:

Attached ☐

DISTRICT I

P.O. Box 1980, Hobbs, NM 88241-1980

DISTRICT II

P.O. Box Drawer DD, Artesia, NM 88211-0719

DISTRICT III

1000 Rio Brazos Rd., Aztec, NM 87410

DISTRICT IV

P.O. Box 2088, Santa Fe, NM 87504-2088

State of New Mexico  
Energy, Minerals and Natural Resources Department

## OIL CONSERVATION DIVISION

P.O. Box 2088  
Santa Fe, New Mexico 87504-2088

Form C-102

Revised February 10, 1994

Instructions on back

Submit to Appropriate District Office

State Lease - 4 Copies

Fee Lease - 3 Copies

☐ AMENDED REPORT

## WELL LOCATION AND ACREAGE DEDICATION PLAT

<sup>1</sup> API Number 30-025-02259	<sup>2</sup> Pool Code 62180	<sup>3</sup> Pool Name Vacuum Grayburg San Andres
<sup>4</sup> Property Code 30022	<sup>5</sup> Property Name Vacuum Grayburg San Andres Unit	<sup>6</sup> Well No. 12
<sup>7</sup> OGRID Number 4323	<sup>8</sup> Operator Name CHEVRON U.S.A. INC.	<sup>9</sup> Elevation 3987' GL

<sup>10</sup> Surface Location

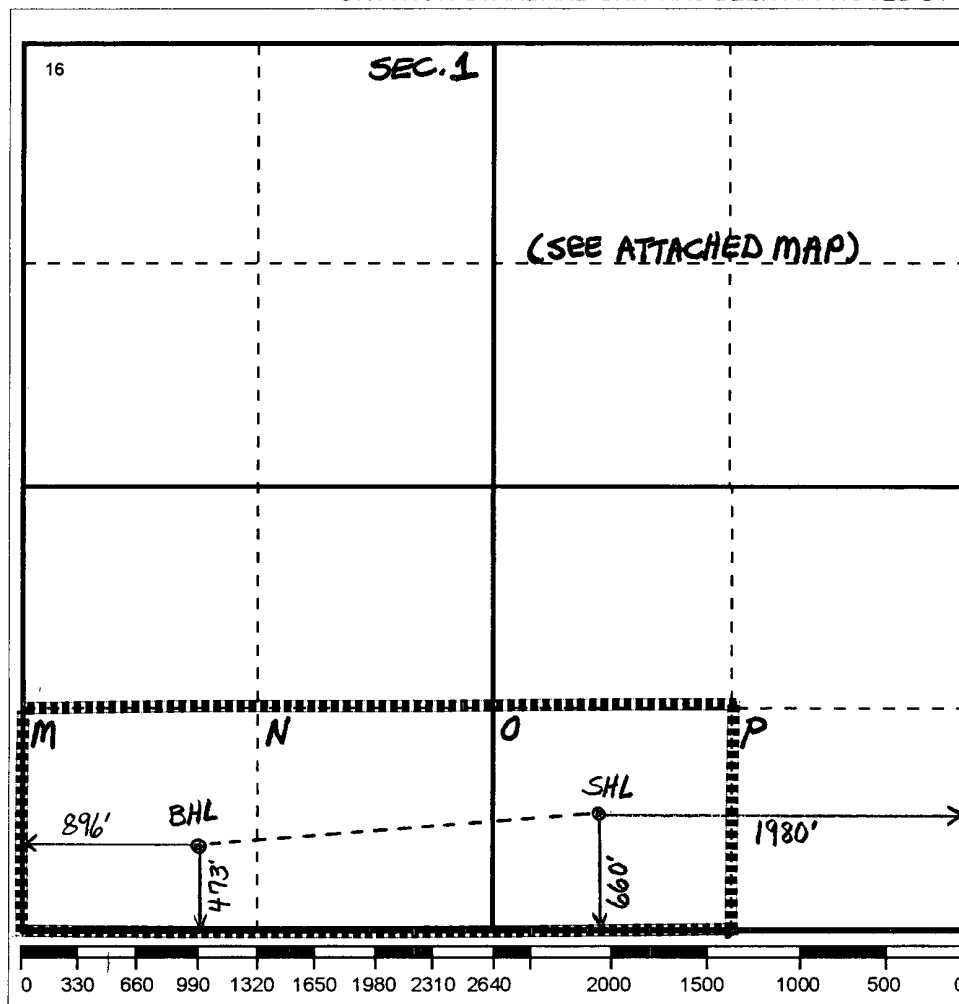
Ul or lot no.	Section	Township	Range	Lot.Idn	Feet From The	North/South Line	Feet From The	East/West Line	County
O	1	18S	34E		660	South	1980	East	Lea

<sup>11</sup> Bottom Hole Location If Different From Surface

Ul or lot no.	Section	Township	Range	Lot.Idn	Feet From The	North/South Line	Feet From The	East/West Line	County
M	1	18S	34E		473	South	896	West	Lea

<sup>12</sup> Dedicated Acres 120	<sup>13</sup> Joint or Infill No	<sup>14</sup> Consolidation Code	<sup>15</sup> Order No.
--------------------------------------	-------------------------------------	----------------------------------	-------------------------

NO ALLOWABLE WILL BE ASSIGNED TO THIS COMPLETION UNTIL ALL INTERESTS HAVE BEEN CONSOLIDATED  
OR A NON-STANDARD UNIT HAS BEEN APPROVED BY THE DIVISION



## 17 OPERATOR CERTIFICATION

I hereby certify that the information  
contained herein is true and complete to the  
best of my knowledge and belief

Signature

Laura Skinner

Printed Name

Laura Skinner

Position

Regulatory Specialist

Date

3/2/2004

## 18 SURVEYOR CERTIFICATION

I hereby certify that the well location shown  
on this plat was plotted from field notes of  
actual surveys made by me or under my  
supervision, and that the same is true and  
correct to the best of my knowledge and  
belief.

Date Surveyed

Signature & Seal of  
Professional Surveyor

Certificate No.

