

DISTRICT I
1625 N. French Dr., Hobbs, NM 88240
DISTRICT II
811 South First, Artesia, NM 88210
DISTRICT III
1000 Rio Brazos Rd., Aztec, NM 87410
DISTRICT IV
2040 South Pacheco, Santa Fe, NM 87505

State of New Mexico
Energy, Minerals and Natural Resources Department

Form C-102
Revised March 17, 1999

Submit to Appropriate District Office
State Lease - 4 Copies
Fee Lease - 3 Copies

OIL CONSERVATION DIVISION

2040 South Pacheco
Santa Fe, New Mexico 87504-2088

☐ AMENDED REPORT

WELL LOCATION AND ACREAGE DEDICATION PLAT

API Number 30-025-36336	Pool Code 78240- 8 444D	Pool Name -Hat Mesa (Morrow)
Property Code 32564	Property Name TORY 3 FEDERAL	Well Number 1
OGRID No. 001301	Operator Name BASS ENTERPRISES PRODUCTION COMPANY	Elevation 3694'

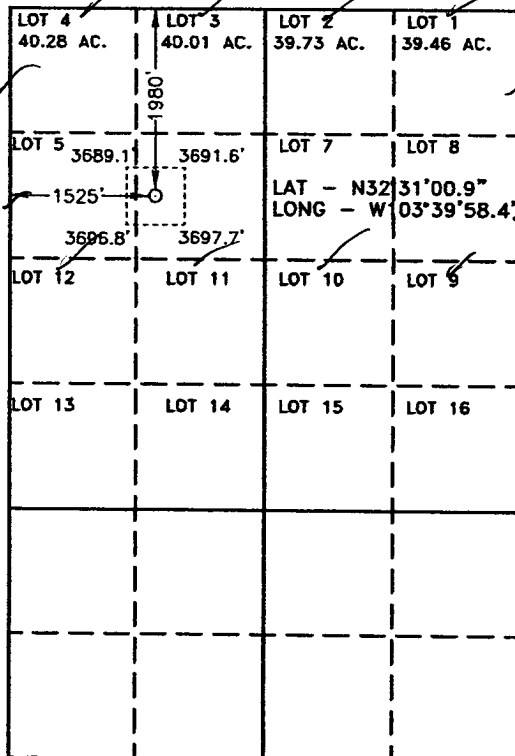
Surface Location

UL or lot No. LOT 6	Section 3	Township 21 S	Range 32 E	Lot Idn	Feet from the 1980	North/South line NORTH	Feet from the 1525	East/West line WEST	County LEA
------------------------	--------------	------------------	---------------	---------	-----------------------	---------------------------	-----------------------	------------------------	---------------

Bottom Hole Location If Different From Surface

UL or lot No.	Section	Township	Range	Lot Idn	Feet from the	North/South line	Feet from the	East/West line	County
Dedicated Acres 320	Joint or Infill	Consolidation Code	Order No.						

NO ALLOWABLE WILL BE ASSIGNED TO THIS COMPLETION UNTIL ALL INTERESTS HAVE BEEN CONSOLIDATED
OR A NON-STANDARD UNIT HAS BEEN APPROVED BY THE DIVISION



SCALE 1" = 2000'

OPERATOR CERTIFICATION

I hereby certify the the information
contained herein is true and complete to the
best of my knowledge and belief.

Tami Wilber
Signature

Tami Wilber
Printed Name
Production Clerk
Title

10/31/03
Date

SURVEYOR CERTIFICATION

I hereby certify that the well location shown
on this plat was plotted from field notes of
actual surveys made by me or under my
supervision, and that the same is true and
correct to the best of my belief.

APRIL 15, 2003

Date Surveyed

Signature & Seal of JONES
Professional Surveyor

7072
No. 3212
Certification No. Gary L. Jones 7977