

District I  
1625 N. French Dr., Hobbs, NM 88240  
District II  
1301 W. Grand Avenue, Artesia, NM 88210  
District III  
1000 Rio Brazos Road, Aztec, NM 87410  
District IV  
1220 S. St. Francis Dr., Santa Fe, NM 87505

State of New Mexico  
Energy Minerals and Natural Resources

Form C-101  
Revised March 17, 1999

Oil Conservation Division  
1220 South St. Francis Dr.  
Santa Fe, NM 87505

Submit to appropriate District Office  
State Lease - 6 Copies  
Fee Lease - 5 Copies

☐ AMENDED REPORT

APPLICATION FOR PERMIT TO DRILL, RE-ENTER, DEEPEN, PLUGBACK, OR ADD A ZONE

<sup>1</sup> Operator Name and Address V-F Petroleum Inc. P.O. Box 1889 Midland, Texas 79702		<sup>2</sup> OGRID Number 24010
		<sup>3</sup> API Number 30 - 025 - 36641
<sup>3</sup> Property Code 33603	<sup>5</sup> Property Name Dos Mas	<sup>6</sup> Well No. 1

<sup>7</sup> Surface Location

UL or lot no. I	Section 12	Township 17S	Range 35E	Lot Idn	Feet from the 1,848	North/South line South	Feet from the 1,153	East/West line East	County Lea
--------------------	---------------	-----------------	--------------	---------	------------------------	---------------------------	------------------------	------------------------	---------------

<sup>8</sup> Proposed Bottom Hole Location If Different From Surface

UL or lot no.	Section	Township	Range	Lot Idn	Feet from the	North/South line	Feet from the	East/West line	County
<sup>9</sup> Proposed Pool 1 Shoe Bar Mississippian, SOUTH (GAS)					<sup>10</sup> Proposed Pool 2				

<sup>11</sup> Work Type Code N	<sup>12</sup> Well Type Code G	<sup>13</sup> Cable/Rotary R	<sup>14</sup> Lease Type Code S	<sup>15</sup> Ground Level Elevation 3,921'
<sup>16</sup> Multiple N	<sup>17</sup> Proposed Depth 13,500'	<sup>18</sup> Formation Chester	<sup>19</sup> Contractor NA	<sup>20</sup> Spud Date 5/04

<sup>21</sup> Proposed Casing and Cement Program

Hole Size	Casing Size	Casing weight/foot	Setting Depth	Sacks of Cement	Estimated TOC
17 1/2	13 3/8	54	450	500	Surface
12 1/4	9 5/8	40	3,000	1,150	Surface
7 7/8	5 1/2	17	13,500	1,100	3,000

22 Describe the proposed program. If this application is to DEEPEN or PLUG BACK, give the data on the present productive zone and proposed new productive zone. Describe the blowout prevention program, if any. Use additional sheets if necessary.

It is proposed to drill a 17 1/2" hole to 450' with FW, set 13 3/8" csg and cement back to surface. A 12 1/4" intermediate hole will be drilled to 3,000' w/FW and 9 5/8" csg will be set and cemented back to surface. A 3,000 psi annular preventer and a 3,000 psi dual ram BOP will be used in the intermediate hole. A 7 7/8" hole will be drilled to TD w/ cut brine mud. 5 1/2" casing will be set @ TD and cemented back to the intermediate casing shoe. A 3,000 psi annular preventer and a 5,000 psi dual ram BOP will be used on the 7 7/8" hole. Mud up between 9,000 and 11,000' Several DST's may be run. No H2S is expected.

<sup>23</sup> I hereby certify that the information given above is true and complete to the best of my knowledge and belief.		OIL CONSERVATION DIVISION	
Signature: <i>Larry N. Brazile</i>		Approved by: <i>Paul J. Hunt</i>	
Printed name: Larry N. Brazile		Title: PETROLEUM ENGINEER	
Title: Petroleum Engineer		Approval Date:	Expiration Date:
Date: March 12, 2004	Phone: 432-683-3344	Conditions of Approval: Attached MAR 24 2004	

DISTRICT I  
P.O. Box 1980, Hobbs, NM 88241-1980

State of New Mexico  
Energy, Minerals and Natural Resources Department

Revised February 10, 1994  
Submit to Appropriate District Office  
State Lease - 4 Copies  
Fee Lease - 3 Copies

DISTRICT II  
P.O. Drawer DD, Artesia, NM 88211-0719

DISTRICT III  
1000 Rio Brazos Rd., Aztec, NM 87410

OIL CONSERVATION DIVISION

P.O. Box 2088

Santa Fe, New Mexico 87504-2088

DISTRICT IV  
P.O. BOX 2088, SANTA FE, N.M. 87504-2088

☐ AMENDED REPORT

WELL LOCATION AND ACREAGE DEDICATION PLAT

API Number <b>30-025-76641</b>	Pool Code <b>85217</b>	Pool Name <b>SHOE BAR, MISS, SOUTH (GAS)</b>
Property Code <b>33603</b>	Property Name <b>DOS MAS</b>	Well Number <b>1</b>
OGRID No. <b>24010</b>	Operator Name <b>V-F PETROLEUM, INC.</b>	Elevation <b>3921'</b>

Surface Location

UL or lot No.	Section	Township	Range	Lot Idn	Feet from the	North/South line	Feet from the	East/West line	County
<b>1</b>	<b>12</b>	<b>17-S</b>	<b>35-E</b>		<b>1848</b>	<b>SOUTH</b>	<b>1153'</b>	<b>EAST</b>	<b>LEA</b>

Bottom Hole Location If Different From Surface

UL or lot No.	Section	Township	Range	Lot Idn	Feet from the	North/South line	Feet from the	East/West line	County

Dedicated Acres	Joint or Infill	Consolidation Code	Order No.
<b>320 512</b>	<b>N</b>	<b>C</b>	

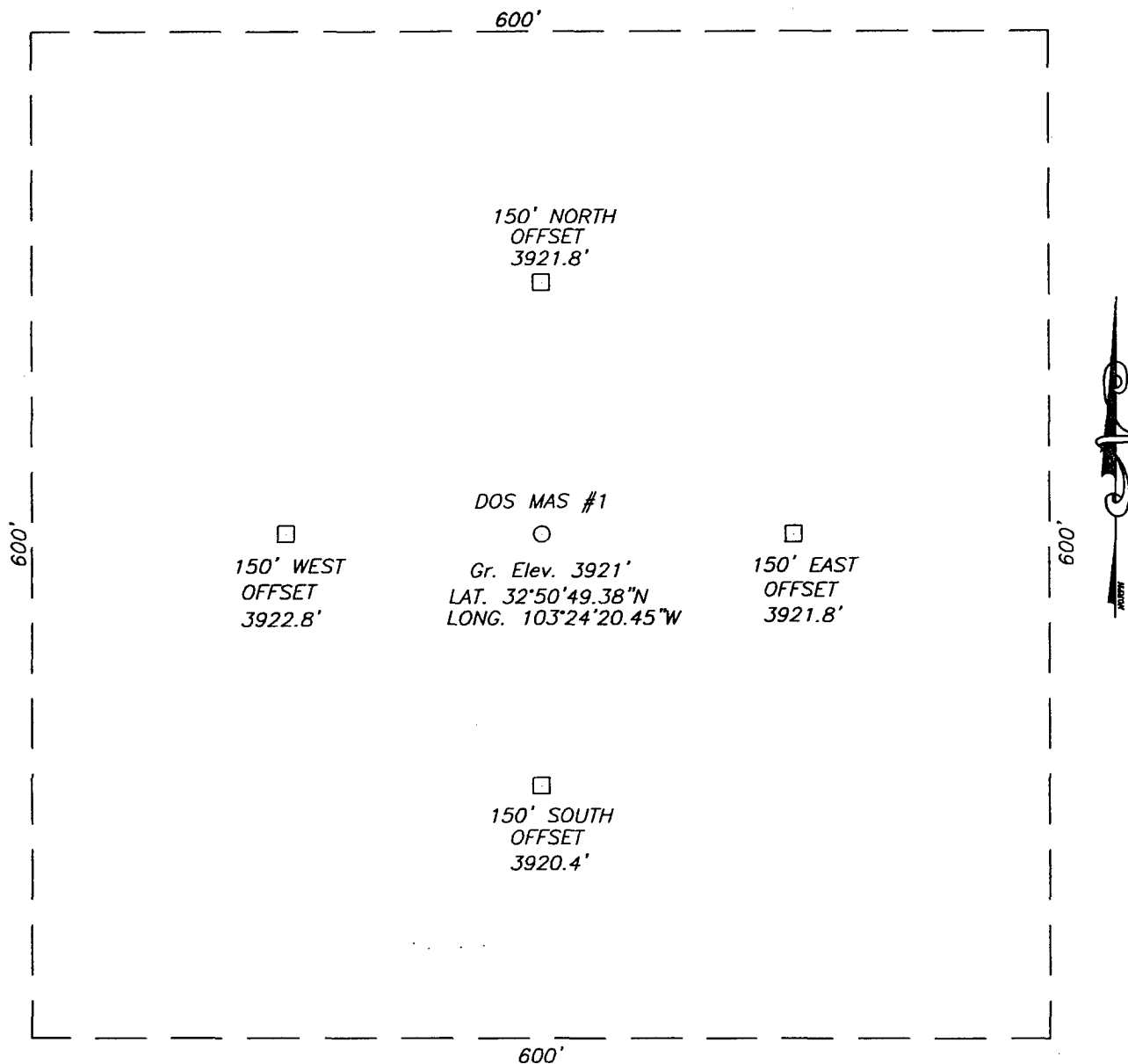
NO ALLOWABLE WILL BE ASSIGNED TO THIS COMPLETION UNTIL ALL INTERESTS HAVE BEEN CONSOLIDATED  
OR A NON-STANDARD UNIT HAS BEEN APPROVED BY THE DIVISION

<p>GEODETIC COORDINATES NAD 27 NME Y = 673119.4 N X = 784897.6 E LAT. 32°50'49.38"N LONG. 103°24'20.45"W</p> <p>1153'</p> <p>1848'</p>	<p><b>OPERATOR CERTIFICATION</b></p> <p>I hereby certify the the information contained herein is true and complete to the best of my knowledge and belief.</p> <p><i>Larry Brazile</i> Signature</p> <p><b>LARRY BRAZILE</b> Printed Name</p> <p><b>Petroleum Engineer</b> Title</p> <p><b>3/12/04</b> Date</p>
	<p><b>SURVEYOR CERTIFICATION</b></p> <p>I hereby certify that the well location shown on this plat was plotted from field notes of actual surveys made by me or under my supervision and that the same is true and correct to the best of my belief.</p> <p><b>March 04, 2004</b></p> <p>Date Surveyed _____ A.W.B.</p> <p>Signature &amp; Seal of Professional Surveyor</p> <p><i>Gary E. Eason</i> 3/9/04 04.11.0247</p> <p>Certificate No. <b>GARY EASON</b> 12641</p>

# SECTION 12, TOWNSHIP 17 SOUTH, RANGE 35 EAST, N.M.P.M.,

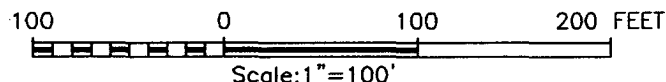
LEA COUNTY,

NEW MEXICO.



## DIRECTIONS TO LOCATION:

FROM THE INTERSECTION OF U.S. HWY #62-180 AND ARKANSAS JUNCTION ROAD. GO NORTH ON ARKANSAS JUNCTION RD. FOR 11.0 MILES TO MILE MARKER 11. TURN LEFT (WEST) AT CATTLE GUARD ONTO A CALICHE RD. (WEST STILES RD.) GO WEST ON CALICHE RD. FOR 3.0 MILES TO A TEE IN RD. GO LEFT (SOUTH) ON CALICHE RD. FOR APPROX. 0.7 MILES. THIS LOCATION IS APPROX. 0.2 MILES WEST.



## V-F PETROLEUM INC.

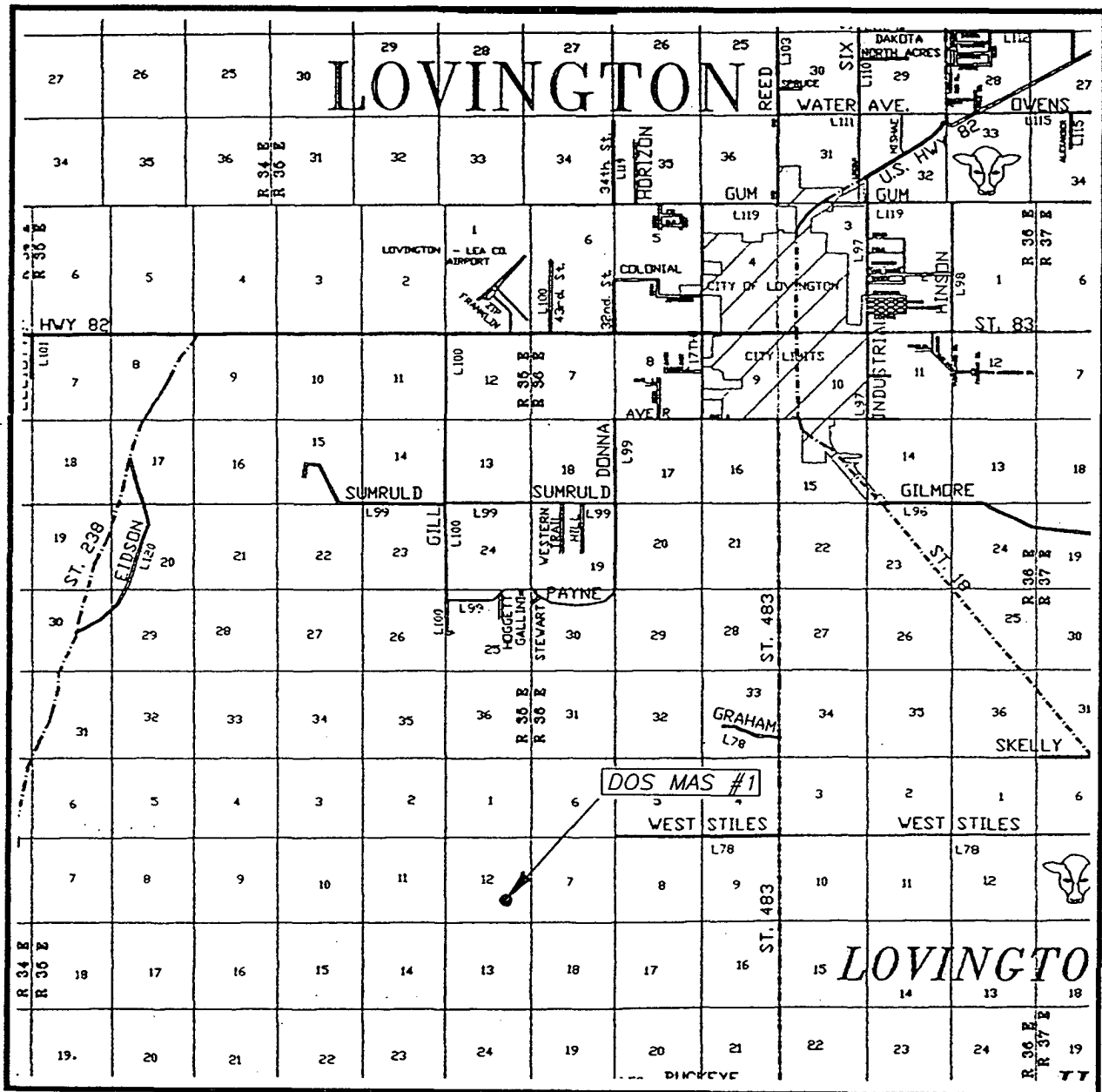
THE DOS MAS #1 LOCATED  
1848' FROM THE SOUTH LINE AND 1153' FROM THE EAST LINE  
OF SECTION 12, TOWNSHIP 17 SOUTH, RANGE 35 EAST,  
LEA COUNTY, NEW MEXICO

Survey Date: 03/04/04	Sheet 1 of 1 Sheets
W.O. Number: 04.11.0247	DRAWN BY: A.W.B
Date: 03/08/03	DISK: CD#10
04.11.0247	Scale: 1"=100'

JOHN WEST SURVEYING COMPANY

412 N. DAL PASO - HOBBS, NEW MEXICO - 505-393-3117

# VICINITY MAP



SCALE: 1" = 2 MILES

SEC. 12 TWP. 17-S RGE. 35-E

SURVEY N.M.P.M.

COUNTY LEA

DESCRIPTION 1848' FSL & 1153' FEL

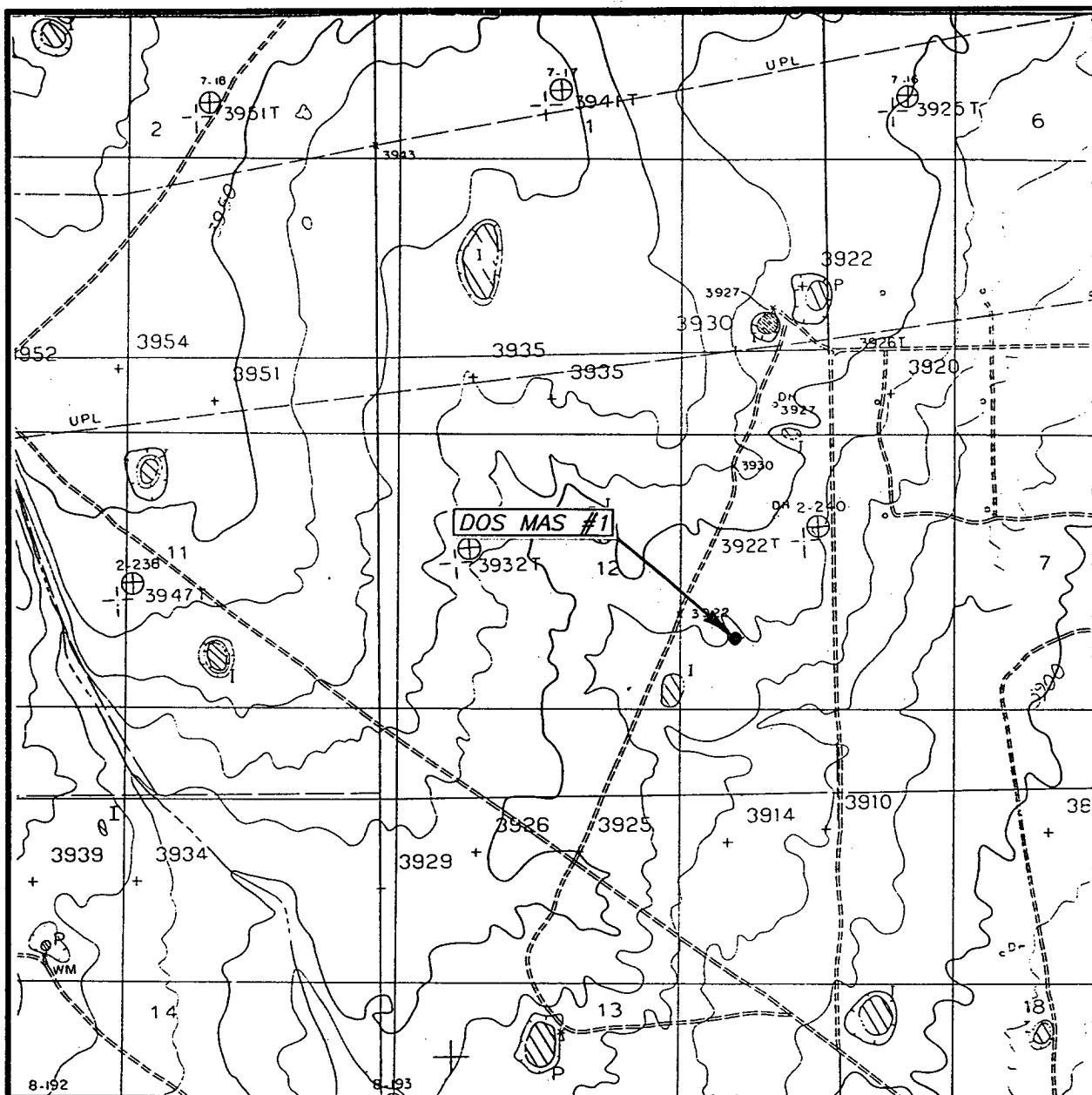
ELEVATION 3921'

OPERATOR V-F PETROLEUM INC.

LEASE DOS MAS

**JOHN WEST SURVEYING**  
**HOBBS, NEW MEXICO**  
**(505) 393-3117**

# LOCATION VERIFICATION MAP



SCALE: 1" = 2000'

CONTOUR INTERVAL: 10'

LOVINGTON SW, N.M.

SEC. 12 TWP. 17-S RGE. 35-E

SURVEY N.M.P.M.

COUNTY LEA

DESCRIPTION 1848' FSL & 1153' FEL

ELEVATION 3921'

OPERATOR V-F PETROLEUM INC.

LEASE DOS MAS

U.S.G.S. TOPOGRAPHIC MAP

LOVINGTON SW, N.M.

**JOHN WEST SURVEYING**  
**HOBBS, NEW MEXICO**  
**(505) 393-3117**

V-F Petroleum Inc  
Dos Mas # 1

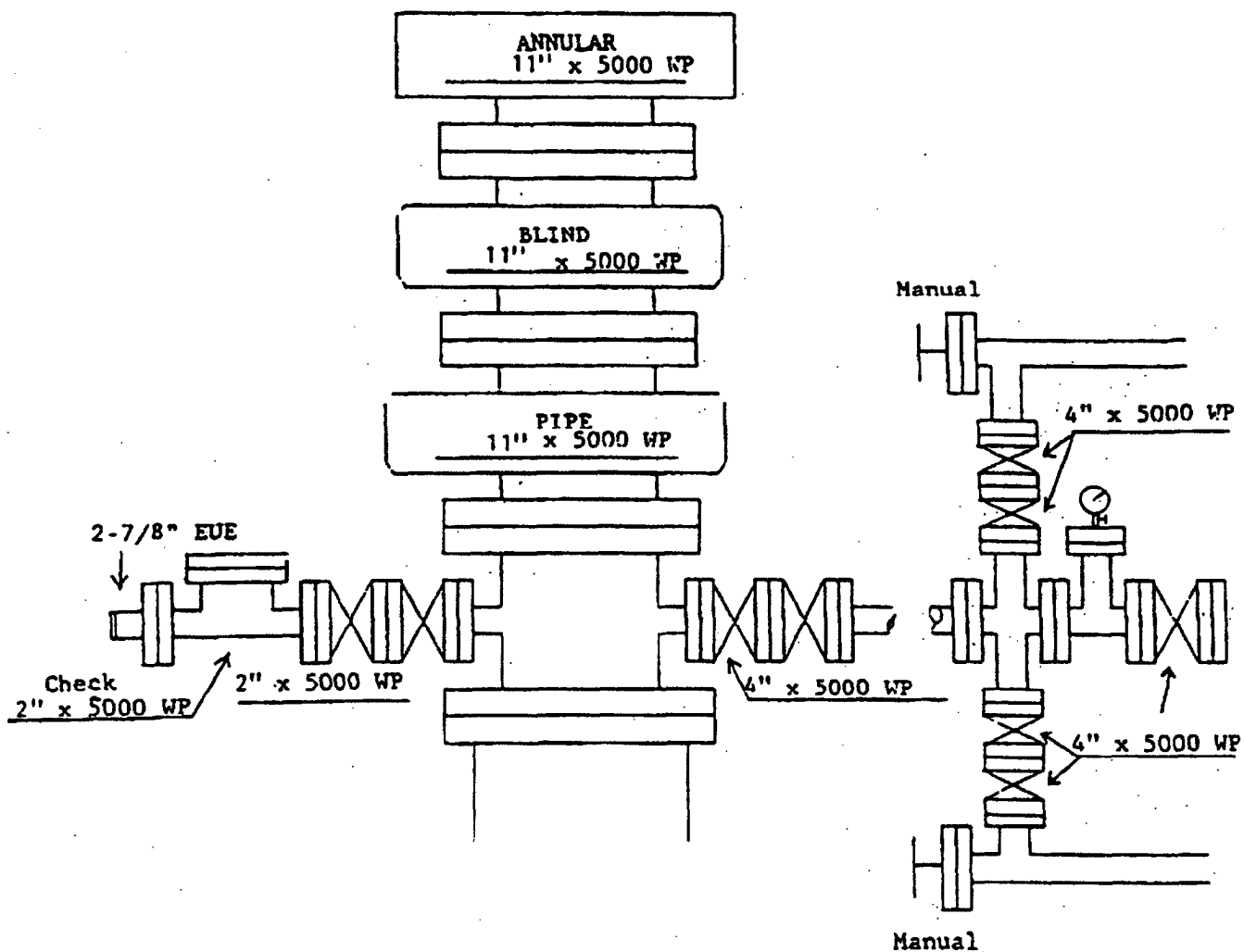


Exhibit 1