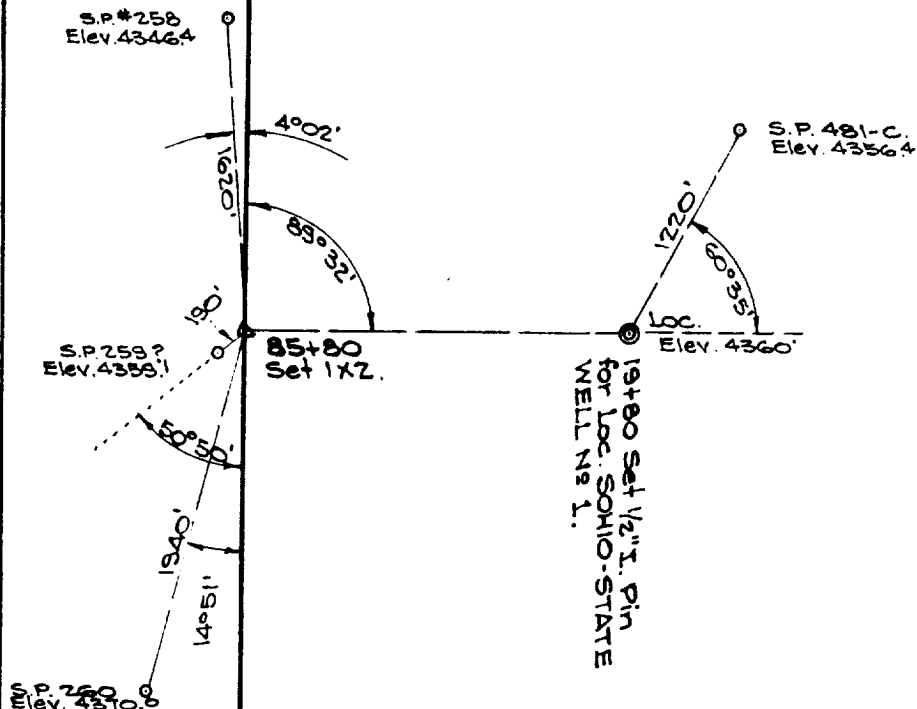


0+00
1 1/4" G.I.P.
BRASS CAP C.C.4-5-32-33.

11/14/58 REF. DEC

52+80 NW. Cor. Sect 9,
T-10-S, R-32-E, LEA CO., N.M.

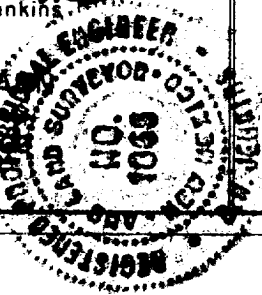


I, D. H. Jenkins, Registered Professional Engineer and Land Surveyor, State of N.M., hereby certify that this survey was made on the ground, under my supervision, according to law and that this plat is a true and correct representation thereof.

This 1st day of December, 1958.

D. H. Jenkins
D. H. Jenkins

JENKINS & SCHUMAKER
Registered Civil Engineers
Box 504 Mutual 4-728
Midland, Texas



SURVEY PLAT

SOHIO PETROLEUM COMPANY, ~~INC.~~
"STATE" LEASE

PLAT SHOWING LOCATION OF WELL NOLL
IN RELATION TO GEOPHYSICAL SHOT HOLES

SECTION 9, T-10-S, R-32-E,
LEA COUNTY, NEW MEXICO.

SCALE: 1" = 1000'

JOB NO.
5770