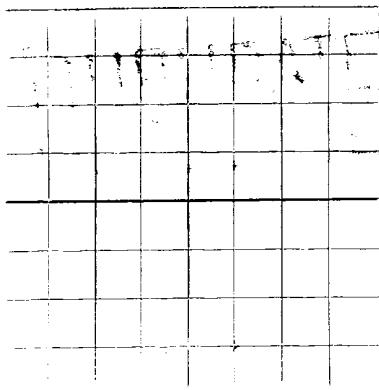


N.



AREA 640 ACRES
LOCATE WELL CORRECTLY

NEW MEXICO OIL CONSERVATION COMMISSION

Santa Fe, New Mexico

WELL RECORD

Mail to District Office, Oil Conservation Commission, to which Form C-101 was sent not later than twenty days after completion of well. Follow instructions in Rules and Regulations of the Commission. Submit in QUINTUPLICATE.

Cities Production Corporation
(Company or Operator)

State "AD"
(Lease)

Well No. 1, in SW 1/4 of SE 1/4, of Sec. 22, T. 10-S, R. 32-E, NMPM.

Undesignated

Pool,

Lea

County.

Well is 4620' feet from North line and 1980 feet from East line

of Section 22-10S-32E. If State Land the Oil and Gas Lease No. is 9943

Drilling Commenced July 22, 1952. Drilling was Completed October 14, 1952

Name of Drilling Contractor Guy Mabey Drilling Company

Address Midland, Texas

Elevation above sea level at Top of Tubing Head 4345'. The information given is to be kept confidential until

OIL SANDS OR ZONES

No. 1, from 9880 to 9900	No. 4, from 9339 to 9380
No. 2, from 9808 to 9835	No. 5, from 9290 to 9340
No. 3, from 9765 to 9812	No. 6, from 8328 to 8400

IMPORTANT WATER SANDS

Include data on rate of water inflow and elevation to which water rose in hole.

No. 1, from - to - feet.	-
No. 2, from - to - feet.	-
No. 3, from - to - feet.	-
No. 4, from - to - feet.	-

CASING RECORD

SIZE	WEIGHT PER FOOT	NEW OR USED	AMOUNT	KIND OF SHOE	CUT AND PULLED FROM	PERFORATIONS	PURPOSE
13 3/8"	48.8#	New&Used	353.2'	Larkin	-	-	-
9 5/8"	32.3#	New&Used	3455.75'	Baker	-	-	-
5 1/2"	15.5, 17, 20#	New&Used	9898.2'	Howco	-	4 jet slots per ft. 9880'-9900') 2 jet slots per ft. 9908'-9913')	Oil Prod.

MUDDING AND CEMENTING RECORD

SIZE OF HOLE	SIZE OF CASING	WHERE SET	NO. SACKS OF CEMENT	METHOD USED	MUD GRAVITY	AMOUNT OF MUD USED
17 1/2"	13 3/8"	371'	350	Plug	-	-
12 1/4"	9 5/8"	3170.05'	1844	Plug	-	-
7 7/8"	5 1/2"	9910'	890	Plug	-	-

RECORD OF PRODUCTION AND STIMULATION

(Record the Process used, No. of Qts. or Gals. used, interval treated or shot.)

This well was acidized with 500 gallon Mud acid by washing perforations from 9880' to 9900' & 9908' to 9913' on 10-23-52.

Result of Production Stimulation As results of acidizing this well, the production increased from

RECORD OF DRILL-STEM AND SPECIAL TESTS

If drill-stem or other special tests or deviation surveys were made, submit report on separate sheet and attach hereto.

TOOLS USED

Rotary tools were used from 0' feet to 9916' feet, and from - feet to - feet.
 Cable tools were used from - feet to - feet, and from - feet to - feet.

PRODUCTION

Put to Producing 10-23, 1952
 Potential Test 5
 OIL WELL: The production during the first 24 hours was 453 barrels of liquid of which 99.9% was oil; -% was emulsion; .1% water; and -% was sediment. A.P.I. Gravity 44.5 Rated 24 hr. Potential 2174 bbls.
 GAS WELL: The production during the first 24 hours was - M.C.F. plus - barrels of liquid Hydrocarbon. Shut in Pressure - lbs.
 Length of Time Shut in -

PLEASE INDICATE BELOW FORMATION TOPS (IN CONFORMANCE WITH GEOGRAPHICAL SECTION OF STATE):

Southeastern New Mexico			Northwestern New Mexico		
T. Anhy.	1565'		T. Devonian	9808'	
T. Salt			T. Silurian		
B. Salt			T. Montoya		
T. Yates	2153'		T. Simpson		
T. 7 Rivers			T. McKee		
T. Queen			T. Ellenburger		
T. Grayburg			T. Gr. Wash.		
T. San Andres	3404'		T. Granite		
T. Glorieta	4801'		T.		
T. Clearfork	5372		T.		
T. Fullerton	6198		T.		
T. Abbo	7040		T.		
T. Wolfcamp	8012		T.		
T. Penn.	8573		T.		
T. Miss.	9532		T.		

FORMATION RECORD

From	To	Thickness in Feet	Formation	From	To	Thickness in Feet	Formation
0	40	40	Surface, Sand & Caliche	7583	7625	42	Shale
40	1130	1090	Red Bed	7625	7645	20	Shale & Lime
1130	1394	264	Red Bed and Shale	7645	7690	45	Shale
1394	1537	143	Red Bed	7690	7846	156	Lime & Shale
1537	1588	51	Anhydrite	7846	7935	89	Lime
1588	2015	427	Anhydrite & Salt Stks	7935	7940	5	Lime and Chert
2015	2285	270	Salt, Anhydrite & shells	7940	7968	28	Lime
2285	2352	67	Anhydrite	7968	7986	18	Lime and Chert
2352	2674	322	Anhydrite & Salt Stks	7986	8339	353	Lime
2674	3353	679	Anhydrite	8339	8389	50	Lime and Shale
3353	3420	67	Anhydrite & Lime	8389	8586	197	Lime
3420	5900	2480	Lime	8586	8603	17	Shale
5900	5950	50	Lime and Sand	8603	8636	33	Lime, Shale & Chert
5950	6010	60	Lime	8636	8657	21	Lime and Shale
6010	6152	142	Lime and Shale	8657	8688	31	Lime, Shale & Chert
6152	6277	125	Lime	8688	9587	899	Lime and Shale
6277	6421	144	Lime and Shale	9587	9601	14	Lime & Chert Stks
6421	7006	585	Lime	9601	9827	226	Lime & Shale
7006	7060	54	Lime and Shale	9827	9835	8	Lime, Shale & Chert
7060	7080	20	Shale	9835	9853	18	Lime and Shale
7080	7095	15	Lime and Shale	9853	9916	63	Lime
7095	7487	392	Shale				
7487	7507	20	Shale and Lime				
7507	7554	47	Shale				
7554	7583	29	Lime and Shale				

ATTACH SEPARATE SHEET IF ADDITIONAL SPACE IS NEEDED

I hereby swear or affirm that the information given herewith is a complete and correct record of the well and all work done on it so far as can be determined from available records.

Date: 11-1-52

DST #1

Ran DST #1 8010-8060' (50') to test lower Abo. Tool open 1½ hrs. Very weak blow of air for 10 minutes. Recovered 40' of drilling fluid slightly gas cut. IFP 0#, FFP 0#, 20 min SIP 0#, MCP 4175#.

DST #2

Ran DST #2 (8198'-8263') (65') tested Wolfcamp. 1" TC, 5/8" BC. Tool open 1½ hrs and closed 20 min for BU. Air to surface immediately and had weak blow for 15 minutes and died. Reopened tool to be sure it was not plugged. Recovered 10' drilling fluid. Flowing pressures 0#. MCP 3875#.

DST #3

Ran DST #3, tested Wolfcamp (8328-8400) 72', 1" TC, 5/8" BC. Tool open 3 hrs and closed 30 min for build up. Gas to surface 8 min., good blow throughout test. Recovered 2600' fluid, 30' oil and gas cut drilling fluid, 2300' clean oil (25 bbls) 270' heavy oil and gas cut drilling fluid. IFP 75#, FFP 500#, 30 min SIP 2025#. MCP 4375#. Gravity 44 deg.

DST #4

Ran DST #4 from 8398' to 8430' (32') 1" TC, 5/8" BC, Tool open 3 hours and closed 30 min for BU, good blow of air. Recovered 60' of gas cut drilling fluid. IFP 0#, FFP 0#, 30 min SIP 625#, MCP 4550#.

DST #5

Ran DST #5. Tested (8400 to 8450') (50'). Tool open 2 hours and closed 30 min for BU. 1" TC, 5/8" BC. Faint blow air at start, increased to weak blow for rest of test. Recovered 95' of gas cut drilling fluid. IFP 0#, FFP 0#, 30 min SI 625#, MCP 4550#.

DST #6

Ran DST #6 tested 8450'-8525' (75'). Tool open 3 hours and closed 30 min for BU. 1" TC, 5/8" BC, fair blow air throughout test. Recovered 360' of gas cut drilling fluid. IFP 0#, 30 min SIP 725#, MCP 4325#.

DST #7

Ran DST #7. Tested Pennsylvanian (9290 to 9324) 34'. Tool open 3 hours and closed 30 min for BU. 1" TC, 5/8" BC. Gas to surface 17 min and had a small blow throughout test. Gas sweet. Recovered 2350' fluid, 200' of heavily oil and gas cut drilling fluid, 2150' clean oil (23.4 bbls.). IFP 175#, FFP 425#, 30 min SIP 2775#, MCP 4900#. Oil Gravity 44.2 deg.

DST #8

Ran DST #8. Tested Pennsylvanian 9290 to 9340' (50') tool open 3 hours and closed 30 min for BU. 1" TC, 5/8" BC. Gas to surface with weak blow in 12 min increased to good blow and continued throughout test. Recovered 1300' (11.2 bbls) oil cut 10% with drilling fluid. IFP 1650#, FFP 950#, 30 min SI 2350#, MCP 4825#.

DST #9

Ran DST #9. Tested Penn. (9339' to 9380') 41'. Tool open 4 hrs & closed 30 min for BU. Gas to surface five minutes with good blow and died in 3 hrs. Recovered 7500' fluid 7200' of clean oil (77.7 bbls) grav. 45.4, 300' heavy oil and gas cut drilling fluid. IFP 350#, FFP 1200#, 30 min SIP 2640#, MCP 4900#.

DST #10

Ran DST #10 9765-9812 (47'). Tool open 3 hours SI 30 min for BU. 1" TC 5/8" BC. Air immediately, gas 2 hrs. 35 min. Weak blow throughout test. Recovered 1700' fluid as follows: 1160' clean oil, 330' sulphur & salt water, 210' oil and gas cut mud. Water titrated 92000 PPM IFP 0#, FFP 450#, SI 3725#, oil gravity 44.7 deg.

DST #11

Ran DST #11. Tested Devonian (9808 to 9835') 27'. 1" TC, 5/8" BC. Tool open 3 hrs. and closed 30 min for BU. Gas to surface 1 hr 45 min, weak blow at start increased to good blow in 15 min and decreased to very weak blow after 2½ hrs. Recovered 6400' of fluid 6130' (67 bbls) of clean oil, 270' of drilling fluid with heavy cut of oil & gas. IFP 0#, FFP 2000#, 30 min SIP 3750#, MCP 5000#. Gravity 44.3.

DST #12

Ran DST #12. Tested Devonian (9835' to 9860') 25'. 1" TC, 5/8" BC. Tool open 4 hrs. Gas to surface 25 min, oil 40 min. Flowed in tank 4 hrs. produced 329 bbls oil cut 2/10%. 1st hr, 79 bbls, 2nd hr. 88 bbls, 3rd hr. 77 bbls, 4th hr 85 bbls. Gravity 44.4 deg. GOR 21 cu ft/bbl. IFP 1250#, FFP 3500#, 30 min SIP 3725#, MCP 4925#.

DST #13

Tried to run DST #13 from 9898' to 9913' (15'), but tool plugged immediately with lost circulation material.

DST #14

Tried to run DST #14 from 9898' to 9913' (15'), but tool plugged again with lost circulation material.

