

OIL CONSERVATION DIVISION

STATE OF NEW MEXICO
ENERGY AND MINERALS DEPARTMENTP. O. BOX 2088
SANTA FE, NEW MEXICO 87501Form C-102
Revised 10-1-78

All distances must be from the outer boundaries of the Section.

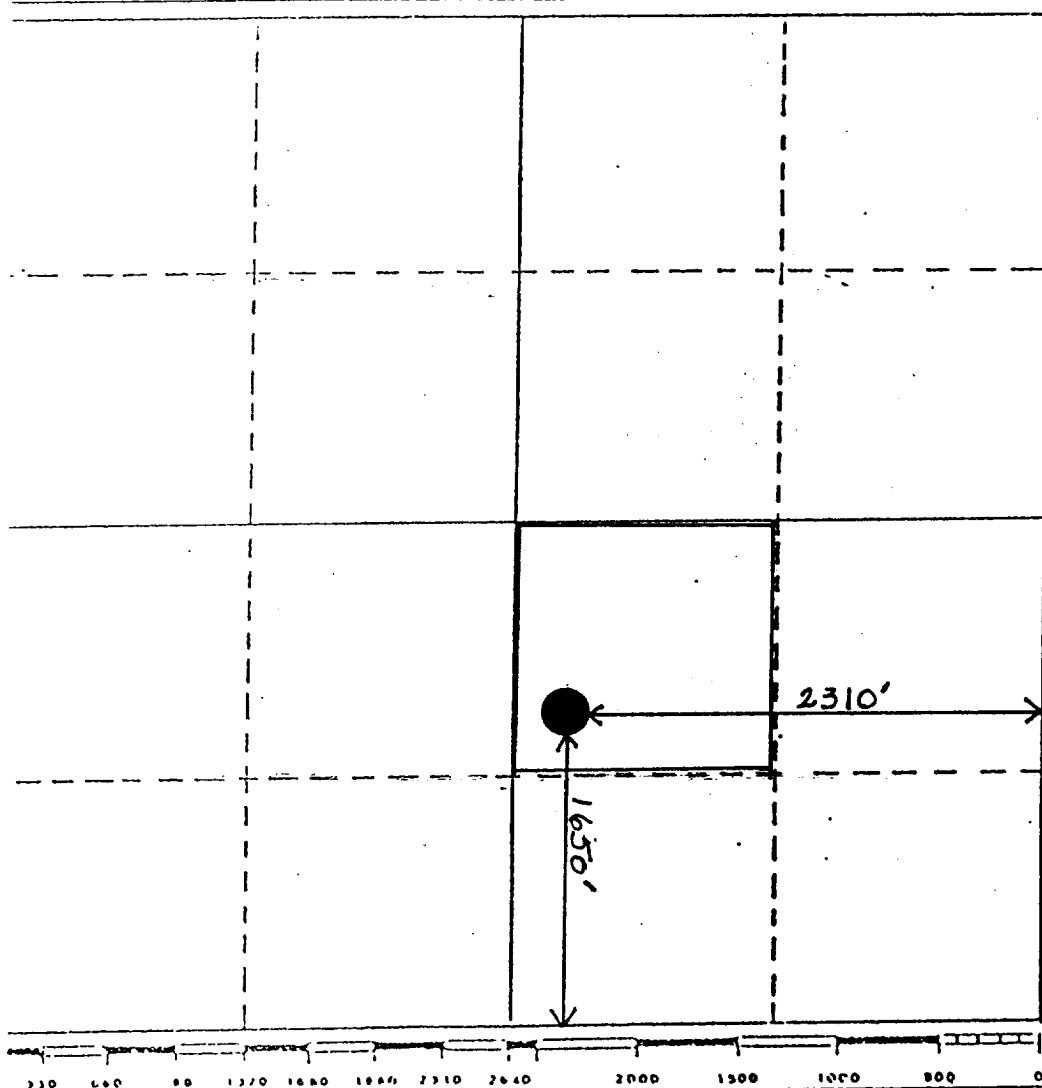
Operator V. H. WESTBROOK		Lease MOORE		Well No. #1	
Well Letter J	Section 24	Township 11-S	Range 32-E	County LEA	
Well Location of Well: 2310 feet from the EAST line and 1650 feet from the SOUTH line					
Ground Level Elev. 4325	Producing Formation SAN ANDRES		Pool UNDESIGNATED		Dedicated Acreage: 40 Acres

1. Outline the acreage dedicated to the subject well by colored pencil or hatchure marks on the plat below.
2. If more than one lease is dedicated to the well, outline each and identify the ownership thereof (both as to working interest and royalty).
3. If more than one lease of different ownership is dedicated to the well, have the interests of all owners been consolidated by communitization, unitization, force-pooling, etc?

☐ Yes ☐ No If answer is "yes," type of consolidation _____

If answer is "no," list the owners and tract descriptions which have actually been consolidated. (Use reverse side of this form if necessary.) _____

No allowable will be assigned to the well until all interests have been consolidated (by communitization, unitization, forced-pooling, or otherwise) or until a non-standard unit, eliminating such interests, has been approved by the Division.



CERTIFICATION

I hereby certify that the information contained herein is true and complete to the best of my knowledge and belief.

V. H. Westbrook

Name
V. H. WESTBROOK
Position
OPERATOR
Company
V. H. WESTBROOK
Date
11-25-87

I hereby certify that the well location shown on this plat was plotted from field notes of actual surveys made by me or under my supervision, and that the same is true and correct to the best of my knowledge and belief.

JANUARY 11, 1958

Date Surveyed
MAX A. SCHUMANN

Registered Professional Engineer
and/or Land Surveyor

#1510

Certificate No.

RECEIVED
DEC 1 1987
OCD
HOBBS OFFICE