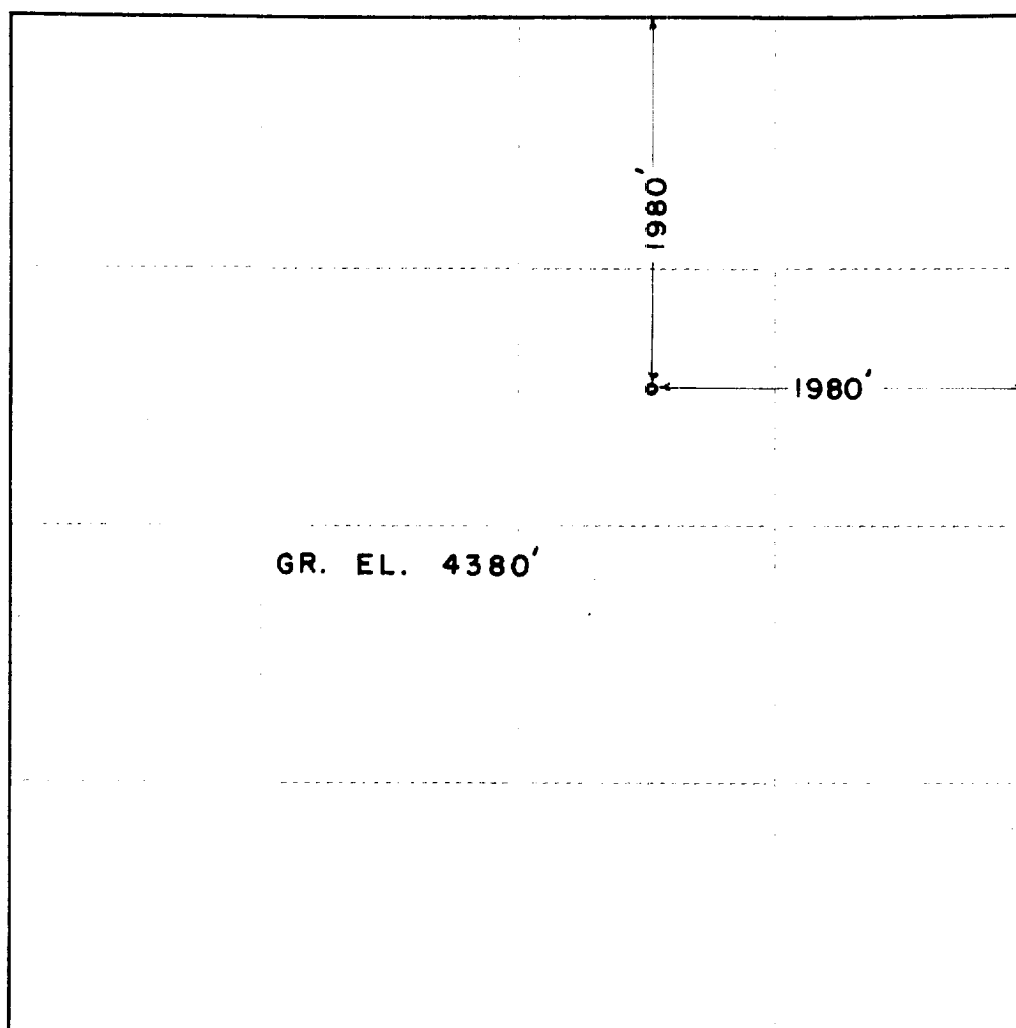


# WELL LOCATION SURVEY PLAT

OPERATOR M. A. MARCHIS

LEASE STATE

WELL NO. 32-20



SEC. 20 , TWP. 12 S., RGE. 32 E., N.M.P.M.

I HEREBY CERTIFY THAT THIS PLAT WAS MADE  
FROM NOTES TAKEN IN THE FIELD BY ME AND  
THAT THE SAME IS TRUE AND CORRECT TO THE  
BEST OF MY KNOWLEDGE AND BELIEF.

*John W. West*

JOHN W. WEST, PE & LS NO. 676

10-11-54