

DUPLICATE

NEW MEXICO  
OIL CONSERVATION COMMISSION

Form C-128

Well Location and/or Gas Operation Plat

Date 8-29-56

Operator Cities Service Production Co. State AY

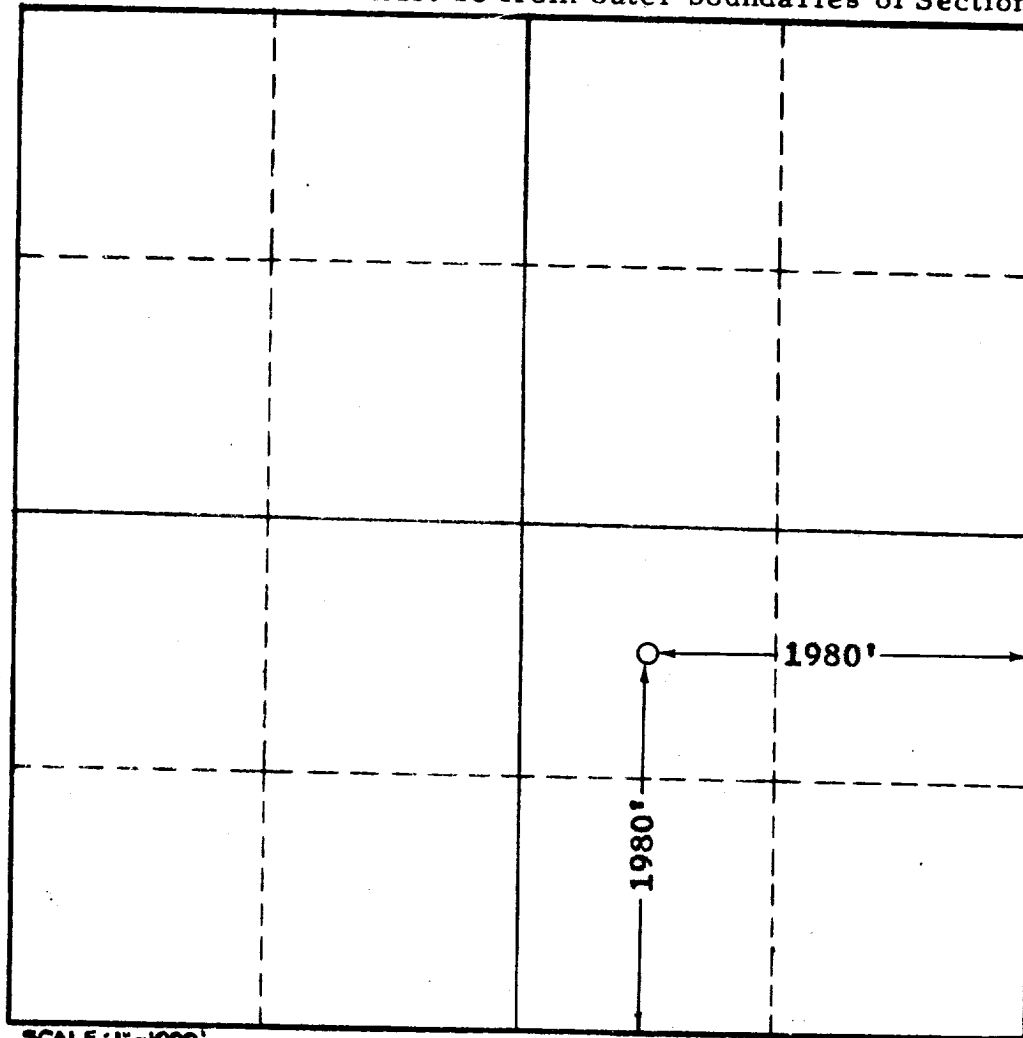
Well No. 1 Section 1 Township 10 S Range 33 E NMPM

Located 1980' Feet From South Line, 1980' Feet From East Line,

Lea County County, New Mexico. G. L. Elevation Est. 4250'

Name of Producing Formation Wolfcamp Pool Lane-Wolfcamp Dedicated Acreage 40

(Note: All distances must be from outer boundaries of Section)



SCALE: 1" = 1000'

1. Is this Well a Dual Comp. ? Yes      No
2. If the answer to Question 1 is yes, are there any other dually completed wells within the dedicated acreage? Yes      No

This is to certify that the above plat was prepared from field notes of actual surveys made by me or under my supervision and that the same are true and correct to the best of my knowledge and belief.

Name John W. West  
Position Dist. Supt.  
Representing Cities Service Production Co.  
Address Box 97, Hobbs, New Mexico

Date Surveyed 8-29-56  
Registered John W. West Professional Engineer and/or  
Land Surveyor