

30-025-02641

COUNTY	LEA	FIELD	Rough	STATE	NM	MN	02641
OPR	TENNECO OIL CO.			MAP			
	1 Hooper						
	Sec 11, T-9-S, R-35-E			CO-ORD			
	2310' FNL, 330' FEL of Sec.						
	Re-Spd 11-3-69						
	Re-Cmp 11-17-69			CLASS		EL	
				FORMATION	DATUM	FORMATION	DATUM
CSG & SX - TUBING							
10 3/4" at 428' w/425 sx							
7 5/8" at 4250' w/1800 sx							
4 1/2" at 9900' w/300 sx							
LOGS	EL	GR	RA	IND	HC	A	
				TD 9900';		FBD 9869'	

IP (Permo-Pennsylvanian) Perfs 9798-9822' P 235 BOPD + 1200 BW.
 Pot based on 24 hr test. GOR 1135; Grav 45.

Distribution limited and publication prohibited by subscribers' agreement.
 Reproduction rights reserved by Williams & Lee Scouting Service, Inc.

CONT.	McVay	PROP DEPTH	9900'	TYPE	RT
DATE					

	F.R. 10-21-69; Opr's Elev. 4143' GL
	PD 9900' RT (Rough "C")
	(Orig. Magnolia Pet. Co. #1 Bertie Hooper,
	PSA 12-16-52, OTD 9801')
11-3-69	TD 9900'; WOC
	Deepened from 9801' to 9900'
	Ran 4 1/2" casing
11-10-69	TD 9900'; Fishing
11-18-69	TD 9900'; PBD 9869'; TO Pmp
	Perf 9798-9812', 9815-22' w/1 SPF
	Acid (9798-9822') 1000 gals
	Ppd 100 BO + 732 BW in 14 hrs
11-24-69	TD 9900'; PBD 9869'; COMPLETE
11-27-69	COMPLETION REPORTED

NEW MEXICO OIL CONSERVATION COMMISSION
WELL LOCATION AND ACREAGE DEDICATION PLAT

Revised

Form C-102
Supersedes C-122
Effective 1-1-51

All distances must be from the outer boundaries of the Section.

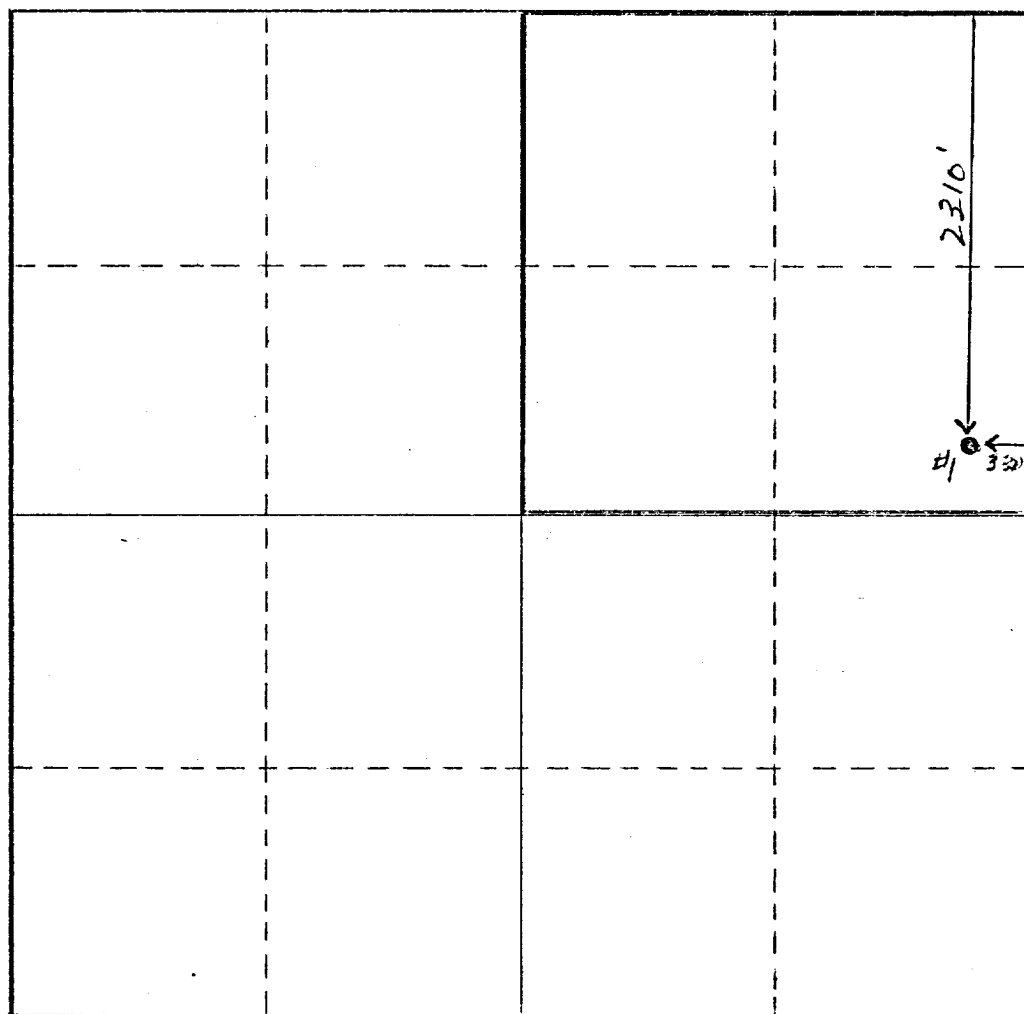
Operator Tenneco Oil Company			Lease Hooper		Well No. 1
Unit Letter H	Section 11	Township 9S	Range 35E	County Lea	
Actual Footage Location of Well: 2310 feet from the North line and 330 feet from the East line					
Ground Level Elev. 4143	Producing Formation Bough "C" Penn.		Pool Bough (Permo-Penn)	Dedicated Acreage: 160 Acres	

1. Outline the acreage dedicated to the subject well by colored pencil or hatchure marks on the plat below.
2. If more than one lease is dedicated to the well, outline each and identify the ownership thereof (both as to working interest and royalty).
3. If more than one lease of different ownership is dedicated to the well, have the interests of all owners been consolidated by communitization, unitization, force-pooling, etc?

☐ Yes ☐ No If answer is "yes," type of consolidation _____

If answer is "no," list the owners and tract descriptions which have actually been consolidated. (Use reverse side of this form if necessary.) _____

No allowable will be assigned to the well until all interests have been consolidated (by communitization, unitization, forced-pooling, or otherwise) or until a non-standard unit, eliminating such interests, has been approved by the Commission. *There is no consolidation of interests.*



CERTIFICATION

Bough
0151

I hereby certify that the information contained herein is true and complete to the best of my knowledge and belief.

Name *Carley Watkins*

Position *Sr. Prof. Clerk*

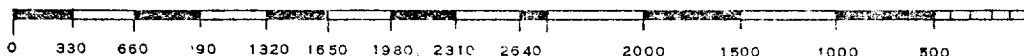
Company *Tenneco Oil Co.*

Date _____

I hereby certify that the well location shown on this plat was plotted from field notes of actual surveys made by me or under my supervision, and that the same is true and correct to the best of my knowledge and belief.

Unknown
Date Surveyed
Unknown
Registered Professional Engineer
and/or Land Surveyor

Certificate No. _____



RECEIVED

DEC 7 1970

OIL CONSERVATION COMMISSION
HOUSTON, TEXAS