

UNITED STATES  
DEPARTMENT OF THE INTERIOR  
BUREAU OF LAND MANAGEMENT

APPLICATION FOR PERMIT TO DRILL, DEEPEN, OR PLUG BACK

1a. TYPE OF WORK

DRILL ☐ RE-ENTRY ☒ DEEPEN ☐ PLUG BACK ☐

b. TYPE OF WELL

OIL WELL ☒ GAS WELL ☐ OTHER ☐ SINGLE ZONE ☐ MULTIPLE ZONE ☐

2. NAME OF OPERATOR

LAYTON ENTERPRISES, INC.

3. ADDRESS OF OPERATOR

3103 79th St. Lubbock, Texas 79423

4. LOCATION OF WELL (Report location clearly and in accordance with any State requirements.)\*

At surface 660' FNL 1980' FWL

At proposed prod. zone Sec 11, T9S, R36E

Same

14. DISTANCE IN MILES AND DIRECTION FROM NEAREST TOWN OR POST OFFICE\*

8 miles E-SE from Milnesand, N.M.

15. DISTANCE FROM PROPOSED\*

LOCATION TO NEAREST  
PROPERTY OR LEASE LINE, FT. 660  
(Also to nearest drlg. unit line, if any)

16. NO. OF ACRES IN LEASE

320

17. NO. OF ACRES ASSIGNED  
TO THIS WELL

160

18. DISTANCE FROM PROPOSED LOCATION\*

TO NEAREST WELL, DRILLING, COMPLETED,  
OR APPLIED FOR, ON THIS LEASE, FT. 1320

19. PROPOSED DEPTH

9710

20. ROTARY OR CABLE TOOLS

Rotary

21. ELEVATIONS (Show whether DF, RT, GR, etc.)

4051 GL

22. APPROX. DATE WORK WILL START\*

7-15-88

23. PROPOSED CASING AND CEMENTING PROGRAM

SIZE OF HOLE	SIZE OF CASING	WEIGHT PER FOOT	SETTING DEPTH	QUANTITY OF CEMENT
17	13 3/8	54.5	375	350 sx. (Circulated)
12 1/4	9 5/8	32-36-40	4208	2000 sx. (Circulated)
8 3/4	7	23-26-29	9670	1660 sx. (Top Cmt. @3700)

Re-Entry of Plugged & Abandoned Producing Well

(\*) Formerly Gulf Oil Corp. Mills Federal No. 1

Propose to clear and repair existing well location and road, remove well marker and install well head. Move in rotary drilling equipment and drill out cement plugs to 9650 - Pressure Test casing to 1000 psi - drill bottom plug to 9710 TD. Perforate Bough "C" Zone Porosity 9670 -9700 or as indicated by logs. Run tubing & stimulate Bough "C" Zone. Install pumping equipment and place well on production.

IN ABOVE SPACE DESCRIBE PROPOSED PROGRAM: If proposal is to deepen or plug back, give data on present productive zone and proposed new productive zone. If proposal is to drill or deepen directionally, give pertinent data on subsurface locations and measured and true vertical depths. Give blowout preventer program, if any.

24.

SIGNED

*Ronald L. Layton*

TITLE

President

DATE

6-20-88

(This space for Federal or State office use)

PERMIT NO.

APPROVAL DATE  
AREA MANAGER

APPROVED BY

*Scott Adams*

TITLE

CARLSBAD RESOURCE AREA

DATE

7-28-88

CONDITIONS OF APPROVAL, IF ANY:

\*See Instructions On Reverse Side

NEW MEXICO OIL CONSERVATION COMMISSION  
WELL LOCATION AND ACREAGE DEDICATION PLAT

Form C-102  
Supersedes C-128  
Effective 1-1-65

All distances must be from the outer boundaries of the Section.

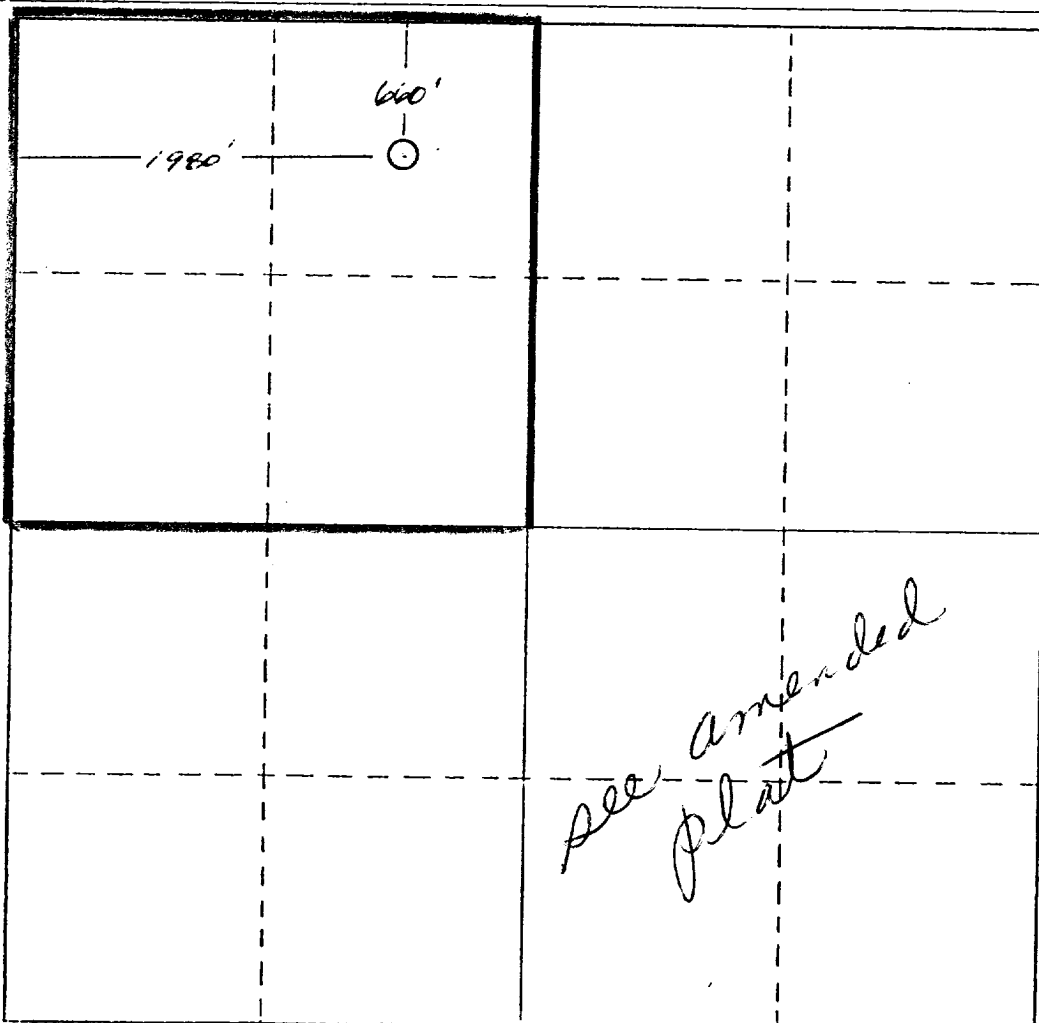
Operator <b>Layton Enterprises, Inc.</b>			Lease <b>El Zorro "C" Federal</b>		Well No. <b>1</b>
Unit Letter <b>C</b>	Section <b>11</b>	Township <b>9S</b>	Range <b>36E</b>	County <b>Lea</b>	
Actual Footage Location of Well: <b>660</b> feet from the <b>North</b> line and <b>1980</b> feet from the <b>West</b> line					
Ground Level Elev. <b>4051</b>	Underlying Formation <b>Bough C</b>		Pool <b>Allison Penn</b>		Dedicated Acreage: <b>160</b> Acres

1. Outline the acreage dedicated to the subject well by colored pencil or hachure marks on the plat below.
2. If more than one lease is dedicated to the well, outline each and identify the ownership thereof (both as to working interest and royalty).
3. If more than one lease of different ownership is dedicated to the well, have the interests of all owners been consolidated by communitization, unitization, force-pooling, etc?

☐ Yes ☐ No If answer is "yes," type of consolidation \_\_\_\_\_

If answer is "no," list the owners and tract descriptions which have actually been consolidated. (Use reverse side of this form if necessary.) \_\_\_\_\_

No allowable will be assigned to the well until all interests have been consolidated (by communitization, unitization, forced-pooling, or otherwise) or until a non-standard unit, eliminating such interests, has been approved by the Commission.



**CERTIFICATION**

I hereby certify that the information contained herein is true and complete to the best of my knowledge and belief.

Name

**Donald R. Layton**

Position

**President**

Company

**Layton Enterprises, Inc.**

Date

**June 20, 1988**

I hereby certify that the well location shown on this plat was plotted from field notes of actual surveys made by me or under my supervision, and that the same is true and correct to the best of my knowledge and belief.

**(s) Guy E. Saunders**

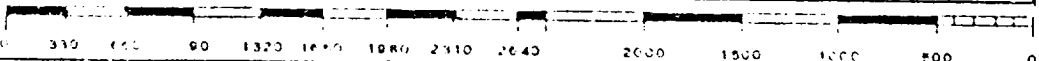
Date Surveyed

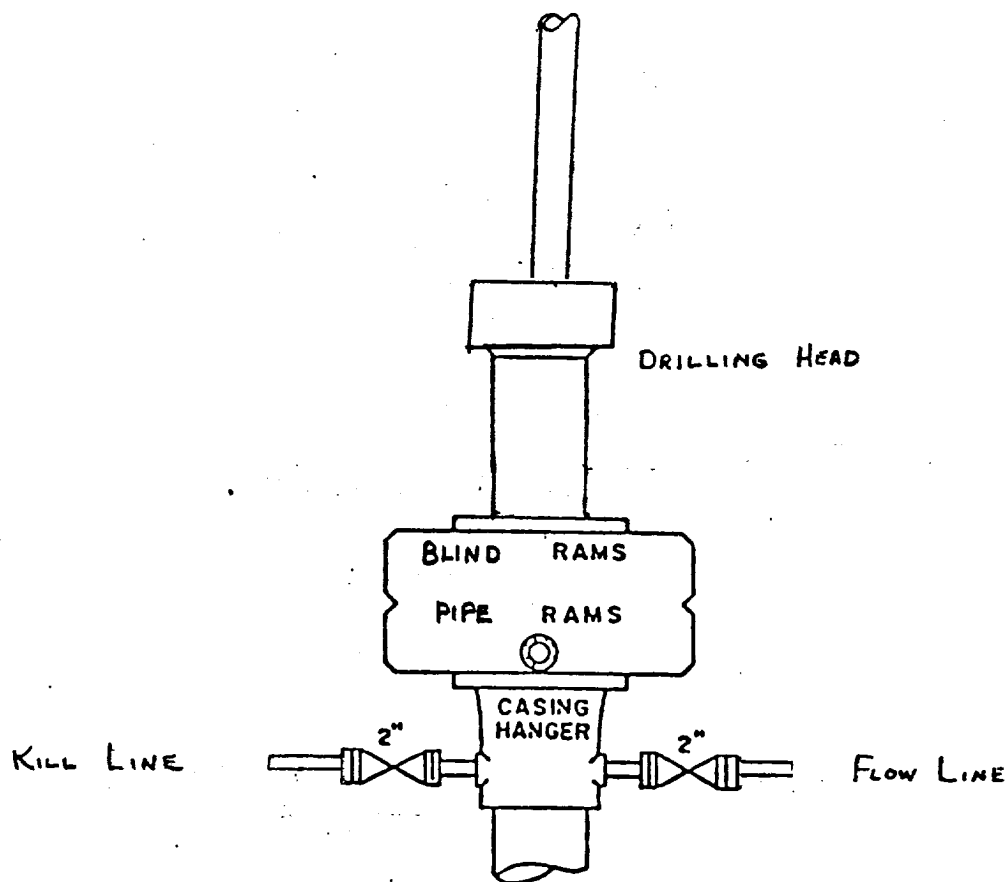
**November 18, 1953**

Registered Professional Engineer and/or Land Surveyor

**Guy E. Saunders**

Certificate No.





BOP STACK

3000 PSI WORKING PRESSURE

EXHIBIT D

LAYTON ENTERPRISES, INC.  
El Zorro "C" Federal No. 1  
NE $\frac{1}{4}$  NW $\frac{1}{4}$  Sec 11, T9S, R36E  
Lea County, New Mexico