

UNITED STATES
DEPARTMENT OF THE INTERIOR
BUREAU OF LAND MANAGEMENT

APPLICATION FOR PERMIT TO DRILL, DEEPEN, OR PLUG BACK

1a. TYPE OF WORK

DRILL ☐ RE-ENTRY ☒ DEEPEN ☐ PLUG BACK ☐

b. TYPE OF WELL

OIL WELL ☒ GAS WELL ☐ OTHER ☐ SINGLE ZONE ☐ MULTIPLE ZONE ☐

2. NAME OF OPERATOR

LAYTON ENTERPRISES, INC.

3. ADDRESS OF OPERATOR

3103 79th St. Lubbock, Tx 79423

4. LOCATION OF WELL (Report location clearly and in accordance with any State requirements.*)

At surface 660' FNL 660' FEL

Sec 11, T9S, R36E

At proposed prod. zone

Same

14. DISTANCE IN MILES AND DIRECTION FROM NEAREST TOWN OR POST OFFICE*

9 miles SE from Milnesand, N. M.

10. DISTANCE FROM PROPOSED*

LOCATION TO NEAREST
PROPERTY OR LEASE LINE, FT. 660
(Also to nearest drlg. unit line, if any)

16. NO. OF ACRES IN LEASE

320

17. NO. OF ACRES ASSIGNED
TO THIS WELL

160

13. DISTANCE FROM PROPOSED LOCATION*

TO NEAREST WELL, DRILLING, COMPLETED, 1320
OR APPLIED FOR, ON THIS LEASE, FT.

19. PROPOSED DEPTH

9719

20. ROTARY OR CABLE TOOLS

Rotary

21. ELEVATIONS (Show whether DF, RT, GR, etc.)

4044 GL

22. APPROX. DATE WORK WILL START*

8-1-88

23. PROPOSED CASING AND CEMENTING PROGRAM

SIZE OF HOLE	SIZE OF CASING	WEIGHT PER FOOT	SETTING DEPTH	QUANTITY OF CEMENT
15	10 3/4	32.75	435	425 sx - Circulated
9 3/4	7 5/8	26.4	4221	1300 sc - Circulated
6 3/4	5 1/2 X-Line	17	Liner	200 sx on bottom
			4051 - 9719	plus 300 sx squeezed over top.

RE-ENTRY OF PLUGGED AND ABANDONED PRODUCING WELL.

(*) Formerly Mobil Oil Corp. Childers Federal No. 2.

Propose to clear and repair existing well location and road, remove well marker and install well head. Move in rotary drilling equipment and drill out cement plugs to 9600 - pressure test casing to 1000 Psi - drill bottom plug to 9719 TD. Perforate Bough "C" Zone porosity 9690 - 9714 or as indicated by logs.

Run tubing & stimulate Bough "C" Zone. Install pumping equipment and place well on production.

IN ABOVE SPACE DESCRIBE PROPOSED PROGRAM: If proposal is to deepen or plug back, give data on present productive zone and proposed new productive zone. If proposal is to drill or deepen directionally, give pertinent data on subsurface locations and measured and true vertical depths. Give blowout preventer program, if any.

24.

SIGNED

Donald R. [Signature]

TITLE President

DATE 6-20-88

(This space for Federal or State office use)

PERMIT NO.

APPROVAL DATE

APPROVED BY

[Signature]

TITLE

AREA MANAGER
CARLSBAD RESOURCE AREA

DATE

7-25-88

CONDITIONS OF APPROVAL, IF ANY:

*See Instructions On Reverse Side

N MEXICO OIL CONSERVATION COMMISSION
WELL LOCATION AND ACREAGE DEDICATION PLAT

Form C-102
Supersedes C-129
Effective 1-1-65

All distances must be from the outer boundaries of the Section.

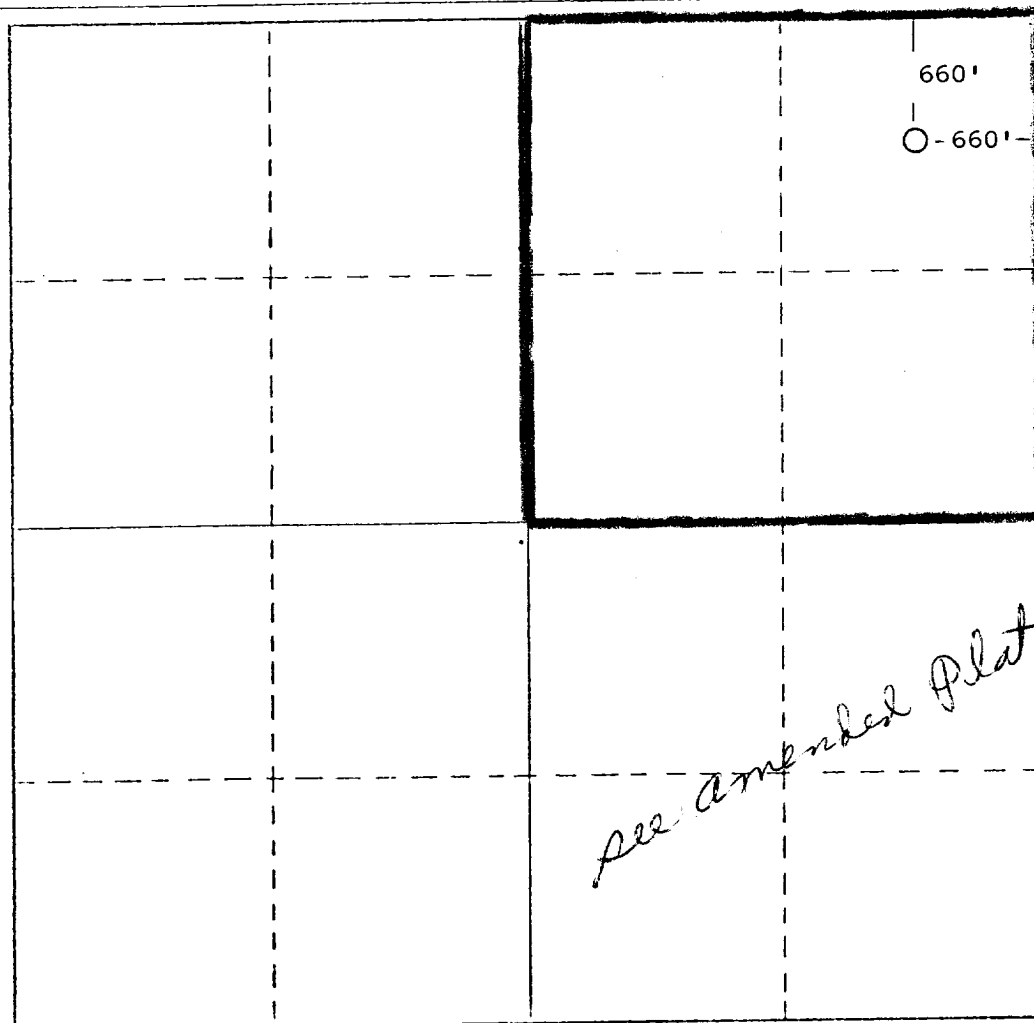
Operator LAYTON ENTERPRISES, INC			Lease El Zorro "C" Federal		Well No. 2
Unit Letter A	Section 11	Township 9S	Range 36E	County Lea	
Actual Portage Location of Well:					
660 feet from the North		line and	660 feet from the East		line
Ground Level Elev. 4044	Producing Formation Bough C	Pool Allison Penn		Dedicated Acreage: 160 Acres	

1. Outline the acreage dedicated to the subject well by colored pencil or hachure marks on the plat below.
2. If more than one lease is dedicated to the well, outline each and identify the ownership thereof (both as to working interest and royalty).
3. If more than one lease of different ownership is dedicated to the well, have the interests of all owners been consolidated by communitization, unitization, force-pooling, etc?

☐ Yes ☐ No If answer is "yes," type of consolidation _____

If answer is "no," list the owners and tract descriptions which have actually been consolidated. (Use reverse side of this form if necessary.) _____

No allowable will be assigned to the well until all interests have been consolidated (by communitization, unitization, forced-pooling, or otherwise) or until a non-standard unit, eliminating such interests, has been approved by the Commission.



CERTIFICATION

I hereby certify that the information contained herein is true and complete to the best of my knowledge and belief.

Name

Donald R. Layton

Position

President

Company

Layton Enterprises, Inc.

Date

June 22, 1988

I hereby certify that the well location shown on this plat was plotted from field notes of actual surveys made by me or under my supervision, and that the same is true and correct to the best of my knowledge and belief.

(S) **W. D. Gill**

Date Surveyed

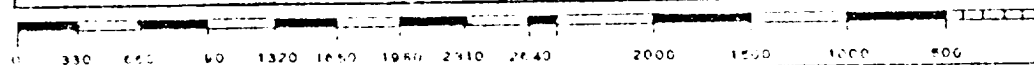
December 30, 1955

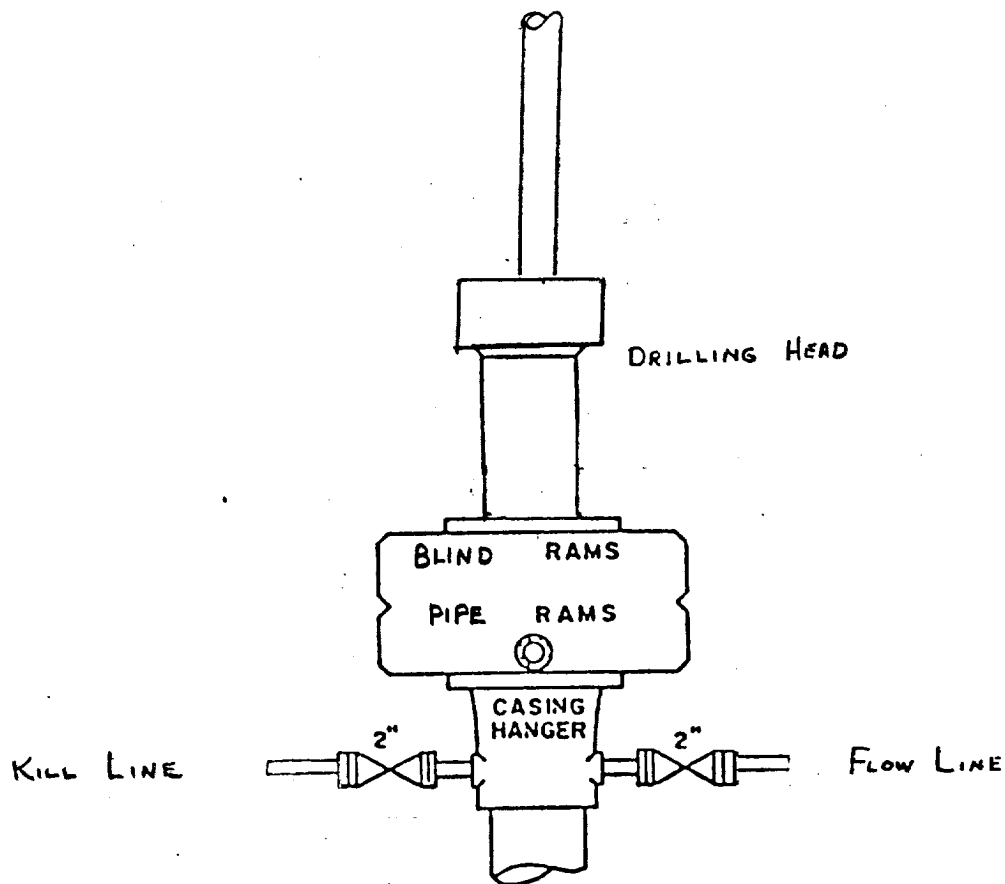
Registered Professional Engineer and/or Land Surveyor

W. D. Gill

Certificate No.

1415





BOP STACK

3000 PSI WORKING PRESSURE

EXHIBIT D

LAYTON ENTERPRISES, INC.
El Zorro "C" Federal No. 2
NE $\frac{1}{4}$ NE $\frac{1}{4}$ Sec 11, T9S, R36E
Lea County, New Mexico