

COUNTY	LEA	FIELD Flying "M" -SA	STATE	N.M.
OPR	SHELL OIL COMPANY			MAF
1 State FMA				
Sec. 17, T-9-S, R-33-E				
660' fr S & E Lines of Sec.				
Spud 8-14-64				
Comp. 9-1-64		CLASS EL 43862		
		FORMATION	DATUM	FORMATION DATUM
CSG & SX - TUBING		LOG:		
7 5/8"	432'	250	SA 4255	
4 1/2"	4570'	200		
LOGS EL GR RA IND HC A				
		TD 4570', PBD 4536'		

IP San Andres Perfs. 4421-58', Ppd. 84 BOPD + 1 BW. Pot.  
Based on 23 hr. test of 80 BO + 1 BW. Gravity 19.4, GOR 695.

Distribution limited and publication prohibited by subscribers' agreement.  
Reproduction rights reserved by Williams & Lee Scouting Service, Inc.

CONT.	PROP DEPTH 4550'	TYPE
DATE		

	F. R. 8-13-64.
	PD 4550' - San Andres.
8-17-64	Drlg. 2515'.
8-24-64	TD 4420', prep to core.
8-31-64	TD 4570', PB 4536', RU Pump.
	Cored 4420-70', rec. 50' dolo.
	Cored 4470-4520', rec. 50' dolo.
	Cored 4520-70', rec. 50' lm.
	Perf. 4421-58' w/12 shots.
	Ac. 1200 gals.
	Swbd. & flwd 39 BNO/7 hrs. 30 mins.
9-8-64	TD 4570', PB 4536', COMPLETED.

30-025-20836

NEW MEXICO OIL CONSERVATION COMMISSION  
WELL LOCATION AND ACREAGE DEDICATION PLAT

Form C-102  
Supersedes C-12d  
Effective 1-1-65

All distances must be from the outer boundaries of the Section.

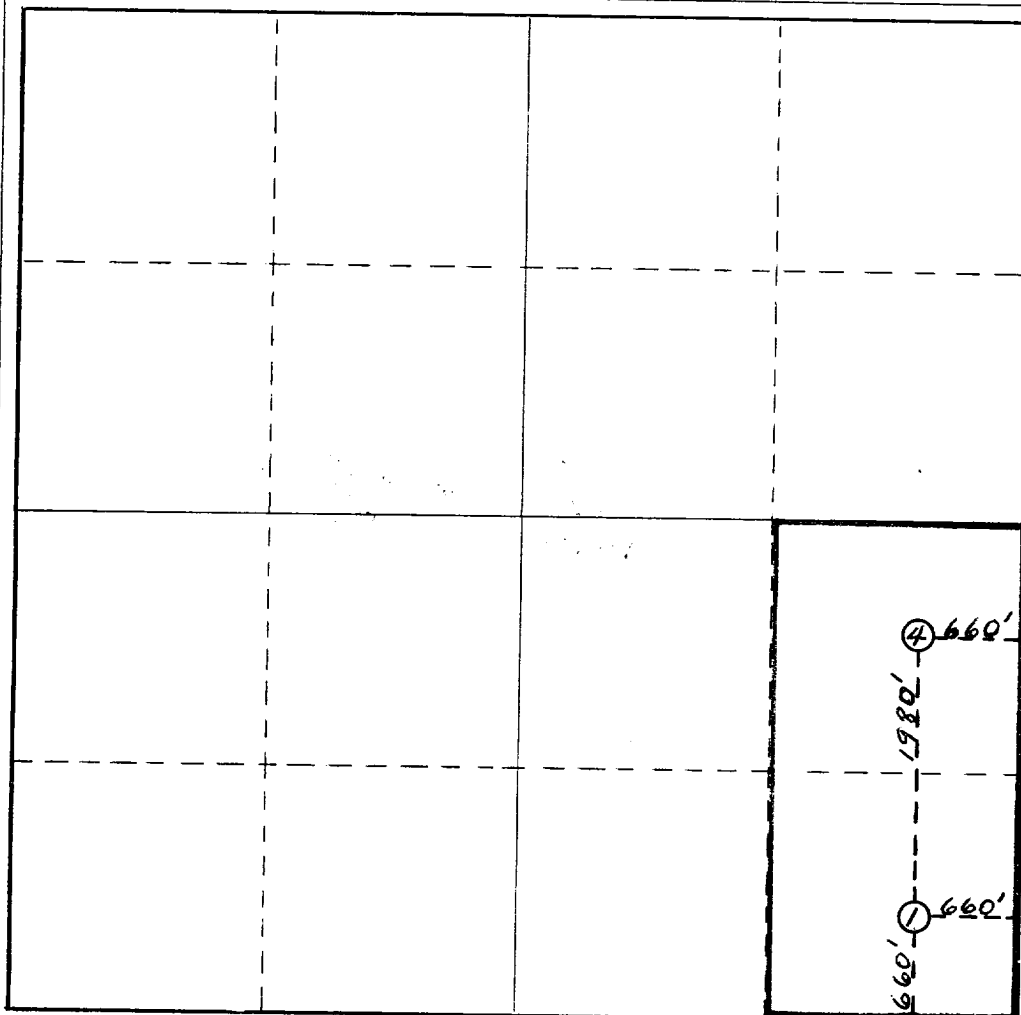
Operator <b>Coastal States Gas Producing Company</b>			Lease <b>State FM "A"</b>		Well No. <b>11, 23, 37, and 4</b>
Unit Letter <b>I &amp; P</b>	Section <b>17</b>	Township <b>9-S</b>	Range <b>33-E</b>	County <b>Lea</b>	
Actual Footage Location of Well:					
#1 - 660 feet from the <b>south</b> line and 660' feet from the <b>east</b> line					
Ground Level Elev. #4 - 1980	Producing Formation <b>San Andres</b>		Pool <b>Flying "M"</b>		Dedicated Acreage: <b>80</b> Acres
#1 - 4386 DF					
#4 - 4392 DF					

1. Outline the acreage dedicated to the subject well by colored pencil or hachure marks on the plat below.
2. If more than one lease is dedicated to the well, outline each and identify the ownership thereof (both as to working interest and royalty).
3. If more than one lease of different ownership is dedicated to the well, have the interests of all owners been consolidated by communitization, unitization, force-pooling, etc?

☐ Yes ☐ No If answer is "yes;" type of consolidation NA

If answer is "no," list the owners and tract descriptions which have actually been consolidated. (Use reverse side of this form if necessary.) NA

No allowable will be assigned to the well until all interests have been consolidated (by communitization, unitization, forced-pooling, or otherwise) or until a non-standard unit, eliminating such interests, has been approved by the Commission.



CERTIFICATION

I hereby certify that the information contained herein is true and complete to the best of my knowledge and belief.

Name  
**Joe R. Howard**

Position  
**Division Production Supt.**  
Company  
**Coastal States Gas Producing Company**

Date  
**April 21, 1967**

I hereby certify that the well location shown on this plat was plotted from field notes of actual surveys made by me or under my supervision, and that the same is true and correct to the best of my knowledge and belief.

Date Surveyed  
**#1 - 8-7-64**  
**#4 - 5-21-65**

Registered Professional Engineer and/or Land Surveyor orig. forms  
C-102 certified by John West & T.J. Chapman, Jr. (ref. copies attached)  
Certificate No. **attached**

0 330 660 990 1320 1650 1980 2310 2640 2000 1500 1000 500 0