

NEW MEXICO OIL CONSERVATION COMMISSION
WELL LOCATION AND ACREAGE DEDICATION PLAT

Form C-102
Supersedes C-128
Effective 1-1-65

All distances must be from the outer boundaries of the Section.

Operator Socony Mobil Oil Company, Inc.		Lease New Mex. "X"		Well No. 1	
Unit Letter 2	Section 10	Township 10-S	Range 32-E	County Lea	
Acres Footage Location of Well: 400 feet from the East line and 330 feet from the South line					
Ground Level Elev. 5014	Producing Formation San Andres	Pool North Mescalero		Dedicated Acreage: 40 Acres	

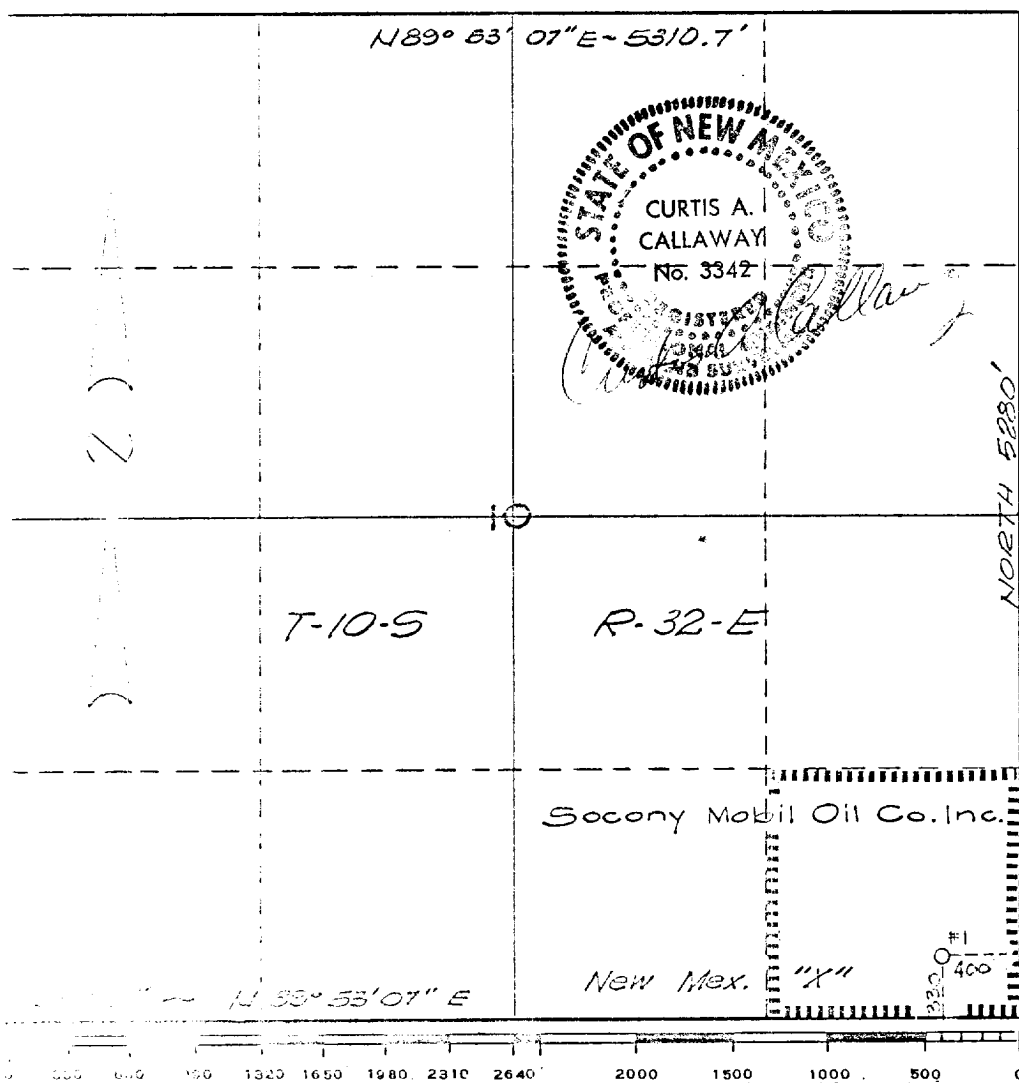
DEC 29 3 44 PM '65
OFFICE G. D. G.

- Outline the acreage dedicated to the subject well by colored pencil or hachure marks on the plat below.
- If more than one lease is dedicated to the well, outline each and identify the ownership thereof (both as to working interest and royalty).
- If more than one lease of different ownership is dedicated to the well, have the interests of all owners been consolidated by communitization, unitization, force-pooling, etc?

☐ Yes ☐ No If answer is "yes," type of consolidation _____

If answer is "no," list the owners and tract descriptions which have actually been consolidated. (Use reverse side of this form if necessary.) _____

No allowable will be assigned to the well until all interests have been consolidated (by communitization, unitization, force-pooling, or otherwise) or until a non-standard unit, eliminating such interests, has been approved by the Commission.



CERTIFICATION	
I hereby certify that the information contained herein is true and complete to the best of my knowledge and belief.	
Name	E. J. Kennon
Position	Group Supervisor
Company	Socony Mobil Oil Co., Inc.
Date	December 22, 1965
I hereby certify that the well location shown on this plat was plotted from field notes of actual surveys made by me or under my supervision, and that the same is true and correct to the best of my knowledge and belief.	
December 21, 1965	
Date Surveyed	Curtis A. Callaway
Registered Professional Engineer and/or Land Surveyor	
3342	
Certificate No.	