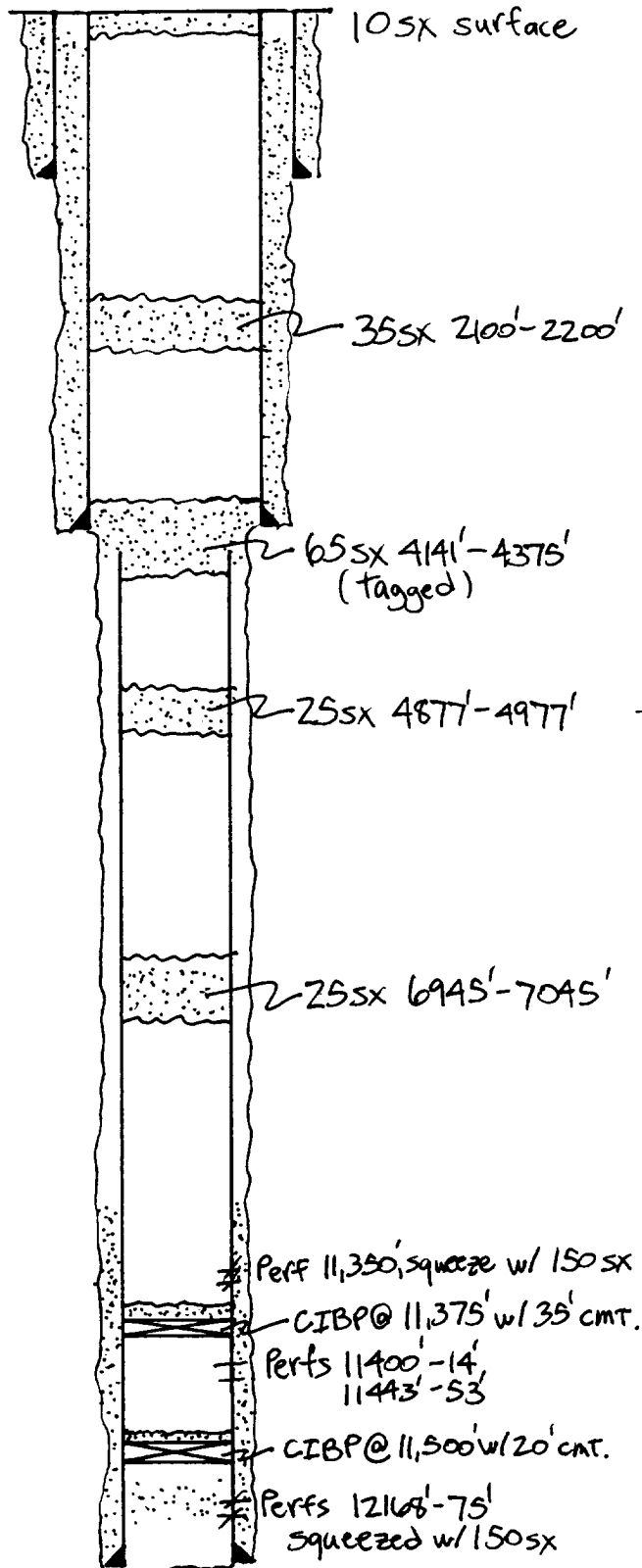


OPERATOR: Saga Petroleum LLC of CO	LOCATION: Sec. 27, T9S, R36E, Lea County, NM
Lease: U.D. Sawyer #5	Unit O, 330' FSL + 2310' FEL



1 3/8" casing set at 235' with 225 sx of cement.

Hole Size: 17 1/4". TOC @ surf by circ.

8 5/8" casing set at 4186' with 1035 sx of cement.

Hole Size: 11". TOC @ 102' by TS.

5 1/2" casing cut and pulled at 4325'

5 1/2" casing set at 12177' with 225 sx of cement.

Hole Size: 7 7/8". 1st Stage: TOC @ 11200' by calc.  
2nd Stage: TOC @ \_\_\_\_\_' by \_\_\_\_\_.

Total depth 12180 DV Tool @ N/A.