

COUNTY LEA FIELD Inbe STATE NM 30-025-22632

OPR O'NEILL, JOSEPH I. JR. MAP

1 O'Neill "M" State

Sec. 19, T-10-S, R-34-E

CO-ORD

660' FNL, 660' FEL of Sec.

Spd 6-20-68

CLASS

Cmp 8-7-68

CSG & SX - TUBING

13 3/8"	413'	400
8 5/8"	3972'	400
5 1/2"	9940'	350

LOGS EL GR RA IND HC A

TD 9941; PBD 9938'

IP Bough "C" Perfs 9911½-17½' Flwd 545 BOPD + 363 BW. Pot.
Based on 21 hr test of 477 BO + 318 BW thru 31/64" chh., TP
275#, CP Pkr, GOR 1130, Gravity 43.

Distribution limited and publication prohibited by subscribers' agreement.
Reproduction rights reserved by Williams & Lee Scouting Service, Inc.

CONT. Coral Drlg. Co.


PROP DEPTH 10,000' TYPE RT

DATE

	F.R. 6-27-68; Elev. 4196' GL
	PD 10,000' - Penn.
	Contr. - Coral
8-26-68	AMEND FIELD DESIGNATION: Formerly reported as Undesignated.
7-1-68	TD 413', WOC.
7-9-68	Drlg. 4920' lm.
7-16-68	Drlg. 7488' lm. & sh.
7-22-68	Drlg. 8678' lm & dolo.
7-29-68	Drlg. 9585' lm & sh.
8-5-68	TD 9941', PBD 9938', prep perf. DST 9893-9938', open 20 mins, GTS 3½ mins, Fluid To Surface 13 mins, Rev out 5 BO + 3 BOC Wtr, 30 min ISIP 2428#, FP 1854-1876#, 30 min FSIP 2428#.

LEA Inba NM Sec. 19-108-343
O'NEILL, JOSEPH I. JR. #1 O'Neill "TP" State

Page #2

-68 TD 9941', PED 9938', SI.
Perf 9911½-17½' W/2 SPF
Acid (9911½-17½') 500 gals.
Flwd 20 BFPH (50% oil, 50% wtr)
8-19-68 TD 9941', PED 9938', WO Pot.
Flwd 477 BO + 318 BW in 21 hrs thru
31/64" chk., TP 275#, GCR 1130, Gravity
43.
8-26-68 TD 9941', PED 9938', COMPLETE
LCG: Anky 2040', Yates 2725', SA 4000',
Glor 5445', Tubb 6935', Abo 7735', Wolfcamp
9045', Bough "C" 9909'.

**NEW MEXICO OIL CONSERVATION COMMISSION
WELL LOCATION AND ACREAGE DEDICATION PLAT**

Form C-102 11
Supersedes C-128
Effective 1-1-65

All distances must be from the outer boundaries of the Section.

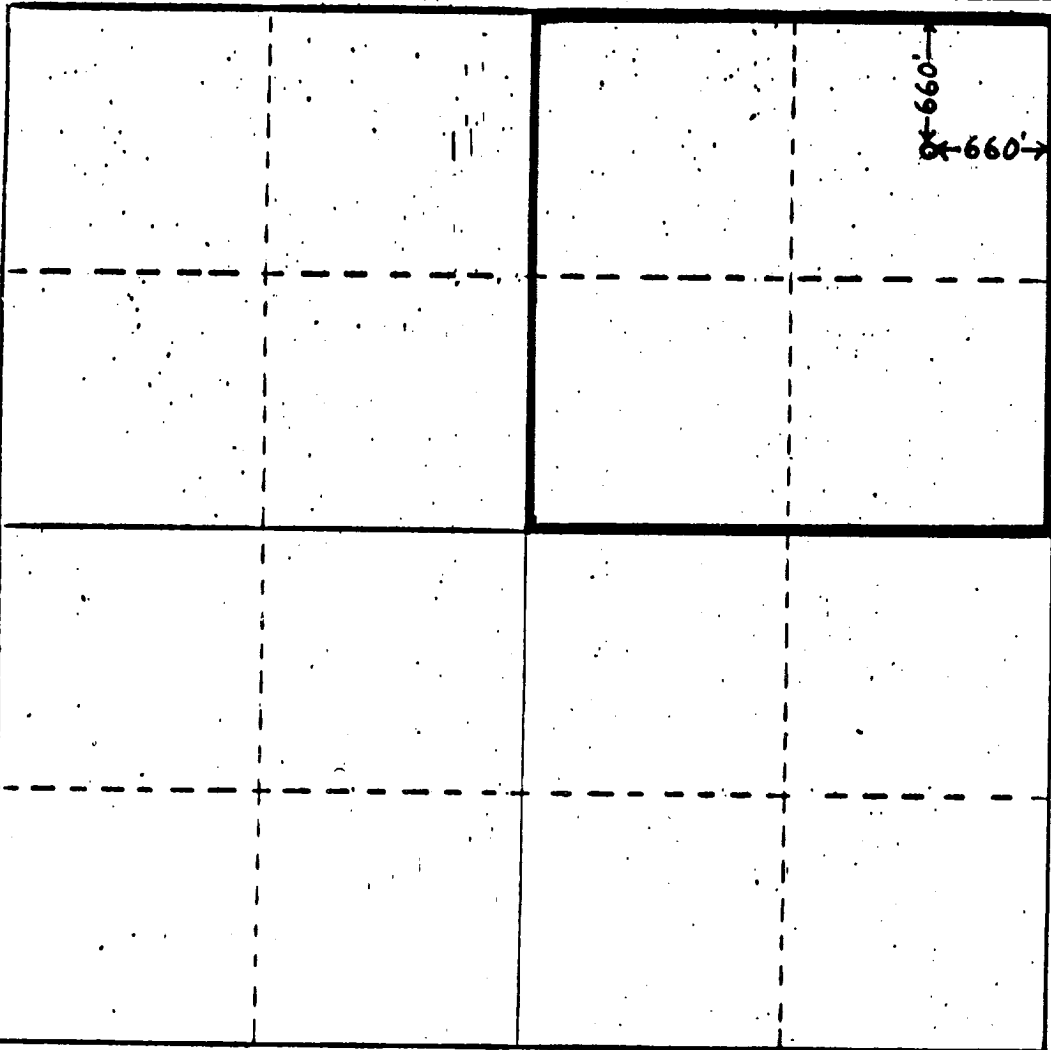
Operator JOSEPH I. O'NEILL, JR.		Lease O'NEILL "M" State		Well No. 1
Unit Letter A	Section 19	Township 10 South	Range 34 East	County Lea
Actual Footage Location of Well: <div style="display: flex; justify-content: space-between;"> 660 feet from the North line and 660 feet from the East line </div>				
Ground Level Elev. 4200'	Producing Formation Penn	Pool Vada-Pennsylvanian	Dedicated Acreage 160 Acres	

1. Outline the acreage dedicated to the subject well by colored pencil or hachure marks on the plat below.
2. If more than one lease is dedicated to the well, outline each and identify the ownership thereof (both as to working interest and royalty).
3. If more than one lease of different ownership is dedicated to the well, have the interests of all owners been consolidated by communitization, unitization, force-pooling, etc?

☐ Yes ☐ No If answer is "yes," type of consolidation _____

If answer is "no," list the owners and tract descriptions which have actually been consolidated. (Use reverse side of this form if necessary.) _____

No allowable will be assigned to the well until all interests have been consolidated (by communitization, unitization, forced-pooling, or otherwise) or until a non-standard unit, eliminating such interests, has been approved by the Commission.



CERTIFICATION

I hereby certify that the information contained herein is true and complete to the best of my knowledge and belief.

E. T. Anderson

Name
E. T. Anderson

Position
Drlg & Prod Supt.

Company
Joseph I. O'Neill, Jr.

Date
October 9, 1968

I hereby certify that the well location shown on this plat was plotted from field notes of actual surveys made by me or under my supervision, and that the same is true and correct to the best of my knowledge and belief.

June 19, 1968

Date Surveyed _____

Registered Professional Engineer
and/or Land Surveyor _____

Certificate No. _____