

NO. OF COPIES RECEIVED	
DISTRIBUTION	
SANTA FE	
FILE	
U.S.G.S.	
LAND OFFICE	
OPERATOR	

NEW MEXICO OIL CONSERVATION COMMISSION

ADJUTANT'S OFFICE O. G. C.

JUN 26 11 16 AM '68

Form C-101
Revised 1-1-65

5A. Indicate Type of Lease
STATE ☒ FEE ☐

5. State Oil & Gas Lease No.

OG 4898

APPLICATION FOR PERMIT TO DRILL, DEEPEN, OR PLUG BACK

1a. Type of Work b. Type of Well OIL WELL <input checked="" type="checkbox"/> GAS WELL <input type="checkbox"/> OTHER <input type="checkbox"/> SINGLE ZONE <input checked="" type="checkbox"/> MULTIPLE ZONE <input type="checkbox"/>		7. Unit Agreement Name	
2. Name of Operator Cayman Corporation		8. Farm or Lease Name Murphy-State	
3. Address of Operator P. O. Box 2099, Palos Verdes Peninsula, California 90274		9. Well No. 2	
4. Location of Well UNIT LETTER J LOCATED 1976.4 FEET FROM THE South LINE AND 2002.5 FEET FROM THE East LINE OF SEC. 13 TWP. 10S. RGE. 33E. NMPM		10. Field and Pool, or Wildcat Lease-Penn.	
		12. County Lea	
		19. Proposed Depth 10,000	
		19A. Formation Bough	
		20. Rotary or C.T. Rotary	
21. Elevations (Show whether DF, RT, etc.) 4188.6 Gr.		21A. Kind & Status Plug. Bond Statewide	
		21B. Drilling Contractor Cactus Drilling Co.	
		22. Approx. Date Work will start July 28, 1968	

PROPOSED CASING AND CEMENT PROGRAM

SIZE OF HOLE	SIZE OF CASING	WEIGHT PER FOOT	SETTING DEPTH	SACKS OF CEMENT	EST. TOP
16"	13 3/8"	48#	375'	400	Circulated
12 1/4"	8 5/8"	24#	3950'	350	2500'
7 7/8"	5 1/2"	17#	9900'	500	7500'

We propose to drill a 16 inch hole to 375 feet, set and cement 375 feet of 13 3/8 inch surface casing, drill a 12 1/4 inch hole to approximately 3950 feet, set and cement 8 5/8 inch intermediate casing at 3950, allow 18 hours for the cement to set, and check for water shut-off. We will then proceed to drill a 7 7/8 inch hole through the Bough "C" formation or to approximately 10,000 feet, evaluate all possible productive horizons with electric logs, and if commercial production is indicated, set and cement 5 1/2 inch casing, perforate and test.

THE COMMISSION MUST BE NOTIFIED
24 HOURS PRIOR TO RUNNING 13 3/8
CASING.

APPROVAL VALID
FOR 90 DAYS UNLESS
DRILLING COMMENCED

EXPIRES 9-27-68

IN ABOVE SPACE DESCRIBE PROPOSED PROGRAM: IF PROPOSAL IS TO DEEPEN OR PLUG BACK, GIVE DATA ON PRESENT PRODUCTIVE ZONE AND PROPOSED NEW PRODUCTIVE ZONE. GIVE BLOWOUT PREVENTER PROGRAM, IF ANY.

I hereby certify that the information above is true and complete to the best of my knowledge and belief.

Signed Ray H. Ford Title Agent Date June 24, 1968

(This space for State Use)

APPROVED BY [Signature] TITLE DATE

CONDITIONS OF APPROVAL, IF ANY:

NEW MEXICO OIL CONSERVATION COMMISSION
WELL LOCATION AND ACREAGE DEDICATION PLAT

Form C-102
Supersedes C-128
Effective 1-1-65

HOBBS OFFICE O. C. C.

All distances must be from the outer boundaries of the Section.

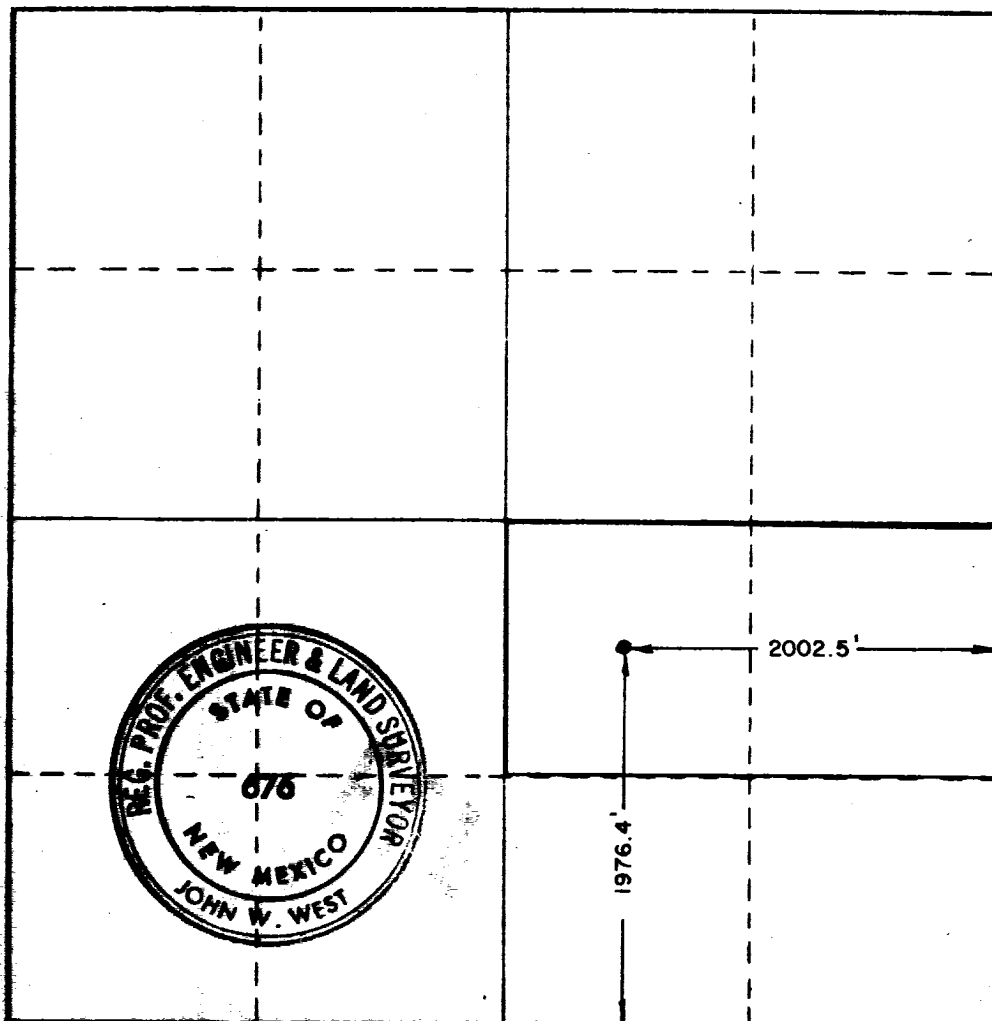
Operator CAYMAN CORPORATION			Lease JUN 26 11 16 AM '68 MURPHY STATE		Well No. 2
Unit Letter J	Section 13	Township 10 SOUTH	Range 33 EAST	County LEA	
Actual Footage Location of Well: 2002.5 feet from the EAST line and 1976.4 feet from the SOUTH line					
Ground Level Elev. 4188.6	Producing Formation <i>Baugh</i>		Pool <i>Labe Kerns Penn</i>	Dedicated Acreage: 80 Acres	

1. Outline the acreage dedicated to the subject well by colored pencil or hachure marks on the plat below.
2. If more than one lease is dedicated to the well, outline each and identify the ownership thereof (both as to working interest and royalty).
3. If more than one lease of different ownership is dedicated to the well, have the interests of all owners been consolidated by communitization, unitization, force-pooling, etc?

☐ Yes ☐ No If answer is "yes," type of consolidation _____

If answer is "no," list the owners and tract descriptions which have actually been consolidated. (Use reverse side of this form if necessary.) _____

No allowable will be assigned to the well until all interests have been consolidated (by communitization, unitization, forced-pooling, or otherwise) or until a non-standard unit, eliminating such interests, has been approved by the Commission.



CERTIFICATION

I hereby certify that the information contained herein is true and complete to the best of my knowledge and belief.

Name *Mr. H. J. J...*
Position *Agent*
Company *Cayman Corp*
Date *June 25, 1968*

I hereby certify that the well location shown on this plat was plotted from field notes of actual surveys made by me or under my supervision, and that the same is true and correct to the best of my knowledge and belief.

Date Surveyed
JUNE 21, 1968
Registered Professional Engineer and/or Land Surveyor

John W. West
Certificate No. **676**

0 330 660 990 1320 1650 1980 2310 2640 2970 3300 3630 3960 4290 4620 4950 5280 5610 5940 6270 6600 6930 7260 7590 7920 8250 8580 8910 9240 9570 9900