

Cmp 8-26-66			FORMATION	DATUM	FORMATION	DATUM
CSG & SX - TUBING						
11 3/4"	402'	200				
8 5/8"	3892'	400				
5 1/2"	9845'	300				
LOGS EL GR RA IND HC A						
			TD 9845', PED 9811'			

IP Bough. "C" Perfs 9075-84' Elwd 434 BOPD + 240 BW. Pot.
Based on 24 hr test thru 82/64" shk., TP 110#, CP Pkr, GOR
740, Gravity 47.2.

Distribution limited and publication prohibited by subscribers' agreement.
Reproduction rights reserved by Williams & Lee Scouting Service, Inc.

CONT. Robinson Bros. Enlg. Co.	PROP DEPTH 9900'	TYPE	RE
DATE			

F.R. 7-18-68; Elev. 4198' CL
PD 9900' - Rough "G"
Cont. - Robinson Bros. Drig. Co.
7-29-68 TD 494', WOC.
8-5-68 Drig. 8180'.
8-12-68 Drig. 8342' 1m.
8-19-68 Drig. 9592'.
8-26-68 TD 9843', BED 9811', prep pers.
9-3-68 TD 9843', BED 9811', COMPLETE
Pers 9773-84' W/2 SPS
Acid (9773-84') 500 gals.
LOG: Anhy 1988', Vares 2660', SA 3908',
Glorieta 5048', Tubb 6824', Abo 7673',
Wolfcamp 8794', Rough "G" 9773'.

[REDACTED]

**NEW MEXICO OIL CONSERVATION COMMISSION
WELL LOCATION AND ACREAGE DEDICATION PLAT**

Form C-102
Supersedes C-128
Effective 1-1-65

All distances must be from the outer boundaries of the section.

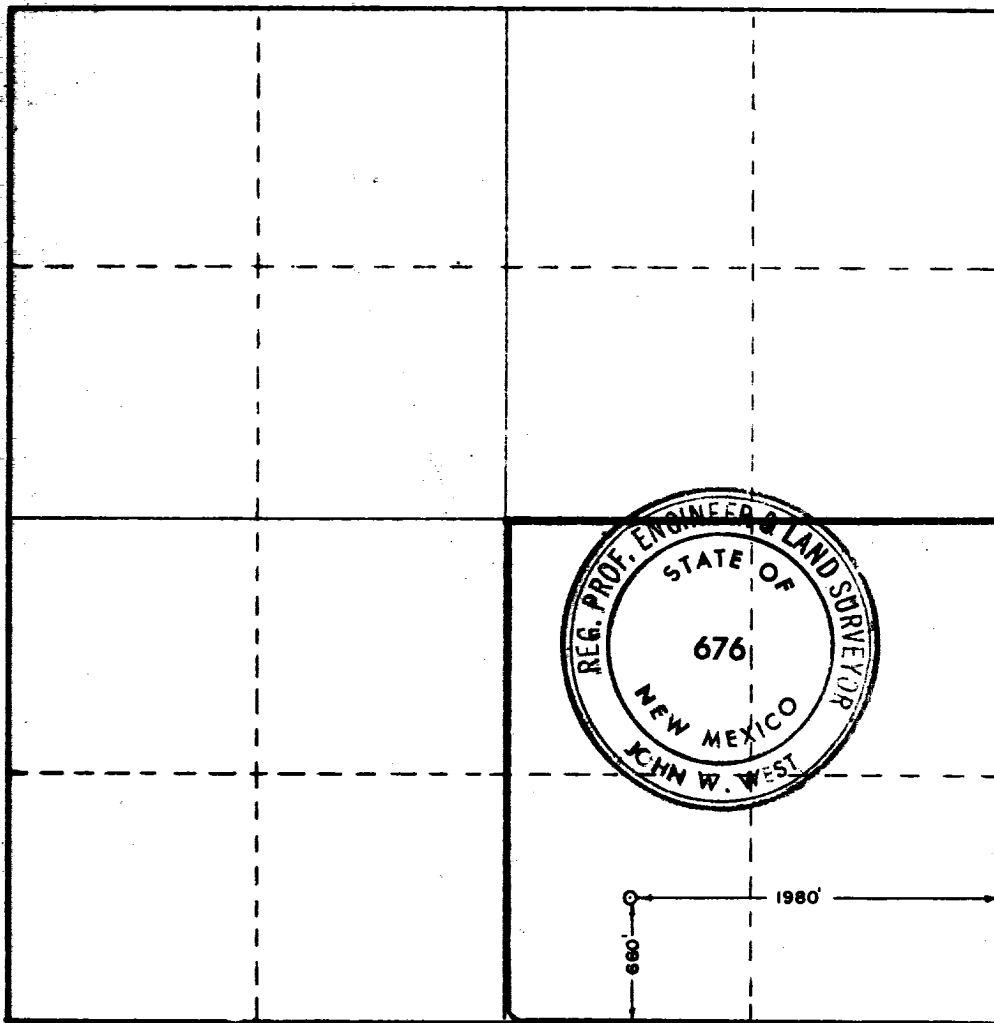
Operator UNION OIL OF CALIFORNIA			Lease STATE 282 8 52 AM '68		Well No. 3
Unit Letter O	Section 12	Township 10	Range 33	County LEA	
Actual Footage Location of Well:					
660 feet from the NORTH line and 1980 feet from the EAST line					
Ground Level Elev. 1290+	Producing Formation Perm	Pool Vada Penn		Dedicated Acreage: 360 Acres	

1. Outline the acreage dedicated to the subject well by colored pencil or hatchure marks on the plat below.
2. If more than one lease is dedicated to the well, outline each and identify the ownership thereof (both as to working interest and royalty).
3. If more than one lease of different ownership is dedicated to the well, have the interests of all owners been consolidated by communitization, unitization, force-pooling, etc?

☐ Yes ☐ No If answer is "yes," type of consolidation _____

If answer is "no," list the owners and tract descriptions which have actually been consolidated. (Use reverse side of this form if necessary.) _____

No allowable will be assigned to the well until all interests have been consolidated (by communitization, unitization, forced-pooling, or otherwise) or until a non-standard unit, eliminating such interests, has been approved by the Commission.



CERTIFICATION

I hereby certify that the information contained herein is true and complete to the best of my knowledge and belief.

Name *J. M. Moore*
 Position **District Operations Dept.**
 Company **Union Oil Co. of California**
 Date **September 18, 1968**

I hereby certify that the well location shown on this plat was plotted from field notes of actual surveys made by me or under my supervision, and that the same is true and correct to the best of my knowledge and belief.

Date Surveyed **JULY 9, 1968**
 Registered Professional Engineer and/or Land Surveyor
John W. West
 Certificate No. **676**