

NE. XICO OIL CONSERVATION COMMISSION  
WELL LOCATION AND ACREAGE DEDICATION PLAT

Form C-102  
Supersedes C-128  
Effective 1-1-65

HOBBS OFFICE, O. C. C.  
All distances must be from the outer boundaries of the section.

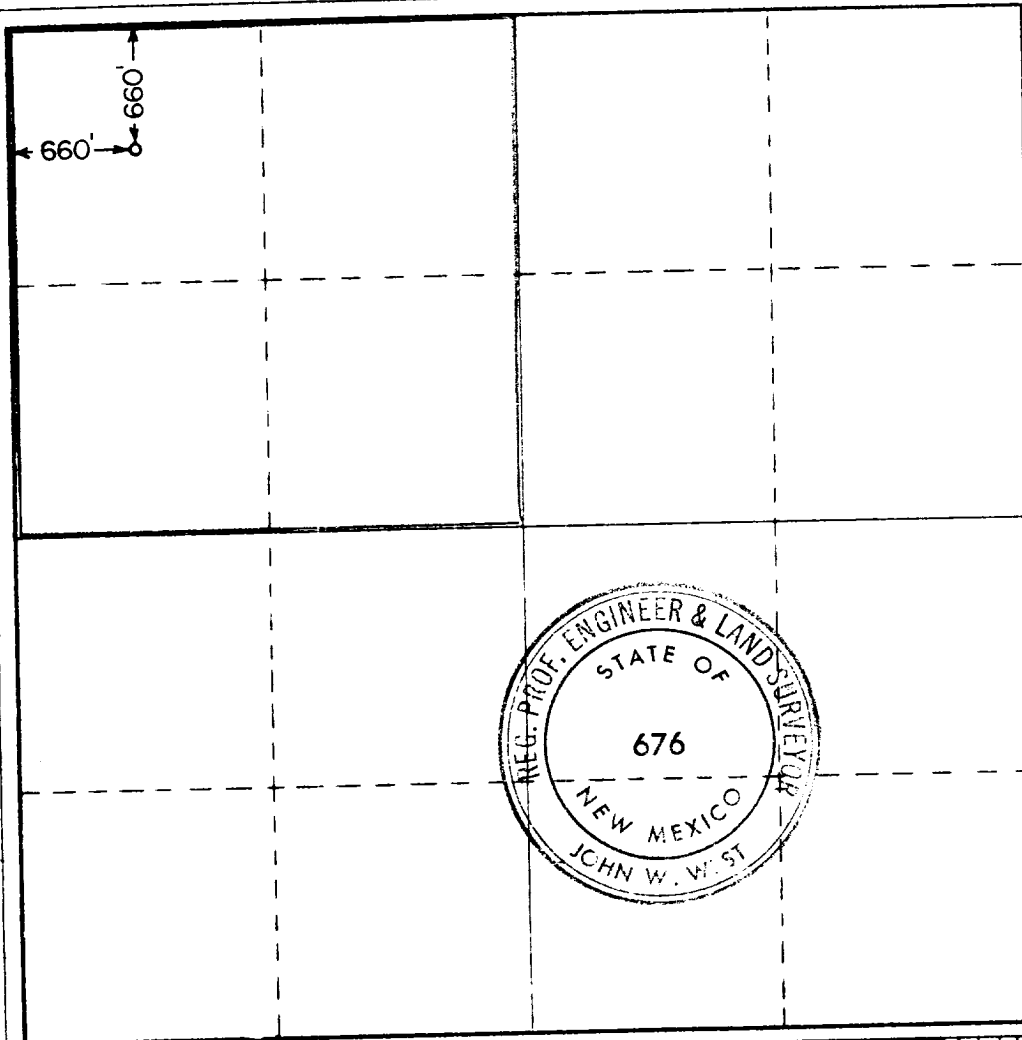
Operator <b>MIDWEST OIL CORP.</b>		Lease <b>JUL 31. DL. 57 ANNE SLEY</b>		Well No. <b>2</b>
Unit Letter <b>D</b>	Section <b>30</b>	Township <b>9 SOUTH</b>	Range <b>34 EAST</b>	County <b>LEA</b>
Actual Footage Location of Well:				
660 feet from the <b>NORTH</b> line and		660 feet from the <b>WEST</b> line		
Ground Level Elev. <b>4305.5</b>	Producing Formation <b>PENN.</b>	Pool <b>VADA</b>	Dedicated Acreage: <b>NW 1/4 160 51.51 Acres</b>	

1. Outline the acreage dedicated to the subject well by colored pencil or hachure marks on the plat below.
2. If more than one lease is dedicated to the well, outline each and identify the ownership thereof (both as to working interest and royalty).
3. If more than one lease of different ownership is dedicated to the well, have the interests of all owners been consolidated by communitization, unitization, force-pooling, etc?

☐ Yes ☐ No If answer is "yes," type of consolidation \_\_\_\_\_

If answer is "no," list the owners and tract descriptions which have actually been consolidated. (Use reverse side of this form if necessary.) \_\_\_\_\_

No allowable will be assigned to the well until all interests have been consolidated (by communitization, unitization, forced-pooling, or otherwise) or until a non-standard unit, eliminating such interests, has been approved by the Commission.



CERTIFICATION

I hereby certify that the information contained herein is true and complete to the best of my knowledge and belief.

Name John W. West  
Position **AGENT**

Company  
**MIDWEST OIL CORP.**

Date  
**JULY 31, 1968**

I hereby certify that the well location shown on this plat was plotted from field notes of actual surveys made by me or under my supervision, and that the same is true and correct to the best of my knowledge and belief.

Date Surveyed  
**JULY 30, 1968**

Registered Professional Engineer and/or Land Surveyor

John W. West  
Certificate No. **676**

0 500 1000 1500 2000 2500 3000 3500 4000 4500 5000 5500 6000 6500 7000 7500 8000 8500 9000 9500 10000