

NEW MEXICO OIL CONSERVATION COMMISSION
WELL LOCATION AND ACREAGE DEDICATION PLAT

Form C-102
Supersedes C-128
Effective 1-1-65

HOBBS OFFICE O. C. C.

All distances must be from the outer boundaries of the Section.

Operator TRI-SERVICE DRILLING COMPANY		Lease AUGUST 22, 1968		Well No. 1
Well Letter "J"	Section 6	Township 11-S	Range 35-E	County LEA
Actual Footage Location of Well: 946 feet from the NORTH line and 660 feet from the EAST line				
Ground Level Elev. 4151	Producing Formation DEVONIAN	Pool UNDESIGNATED	Dedicated Acreage: 40 Acres	

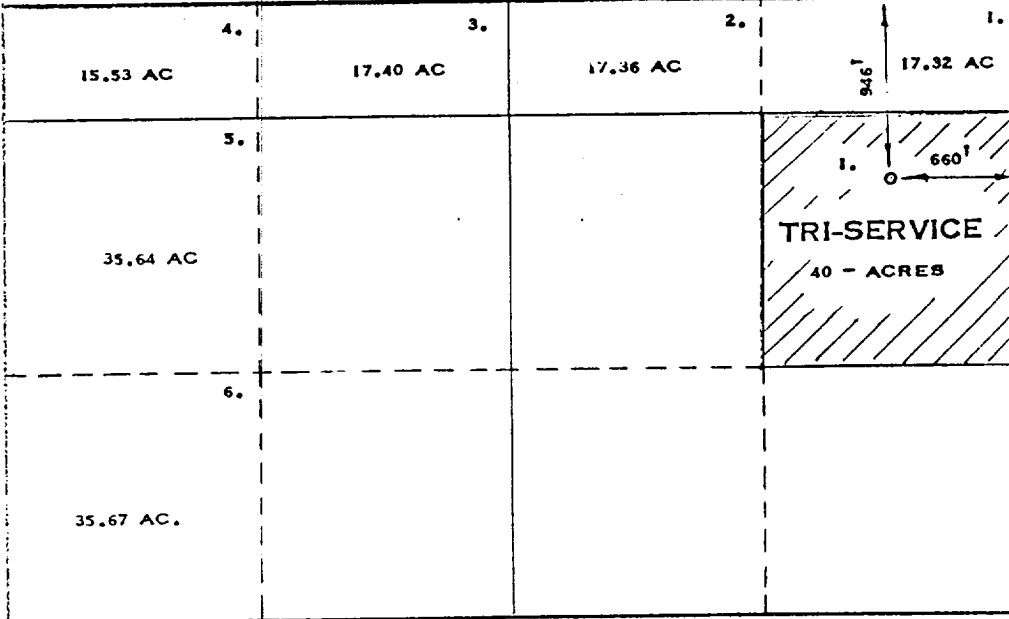
1. Outline the acreage dedicated to the subject well by colored pencil or hachure marks on the plat below.
2. If more than one lease is dedicated to the well, outline each and identify the ownership thereof (both as to working interest and royalty).
3. If more than one lease of different ownership is dedicated to the well, have the interests of all owners been consolidated by communitization, unitization, force-pooling, etc?

☐ Yes ☒ No If answer is "yes," type of consolidation COMMON OWNERSHIP

If answer is "no," list the owners and tract descriptions which have actually been consolidated. (Use reverse side of this form if necessary.) _____

No allowable will be assigned to the well until all interests have been consolidated (by communitization, unitization, forced-pooling, or otherwise) or until a non-standard unit, eliminating such interests, has been approved by the Commission.

NOTE: THIS AREA IS IN T-10-S; R-34-E



CERTIFICATION

I hereby certify that the information contained herein is true and complete to the best of my knowledge and belief.

Name **WALTER D. JENKINS**

Position **PRODUCTION SUPT.**

Company **TRI-SERVICE DRLG. CO.**

Date **AUGUST 21, 1968**

I hereby certify that the well location shown on this plat was plotted from field notes of actual surveys made by me or under my supervision, and that the same is true and correct to the best of my knowledge and belief.

Date Surveyed **AUGUST 10, 1968**

Registered Professional Engineer and/or Land Surveyor

MAX A. SCHUMANN JR. 510

Certificate No. **1510**

0 330 660 990 1320 1650 1980 2310 2640 2000 1500 1000 500 0