

UNITED STATES  
DEPARTMENT OF THE INTERIOR  
GEOLOGICAL SURVEYForm approved.  
Budget Bureau No. 42-14425.

30-025-27134

## APPLICATION FOR PERMIT TO DRILL, DEEPEN, OR PLUG BACK

1a. TYPE OF WORK

DRILL ☒DEEPEN ☐PLUG BACK ☐

b. TYPE OF WELL

OIL  
WELL ☒GAS  
WELL ☐

OTHER

SINGLE  
ZONE ☒MULTIPLE  
ZONE ☐

2. NAME OF OPERATOR

TENNECO OIL COMPANY

3. ADDRESS OF OPERATOR

Box 1031 MIDLAND, TEXAS 79701

4. LOCATION OF WELL (Report location clearly and in accordance with any State requirements.)\*

At surface

660 FNL &amp; 660 FEL SEC 12; T 9S; R 35E

At proposed prod. zone

14. DISTANCE IN MILES AND DIRECTION FROM NEAREST TOWN OR POST OFFICE\*

15. DISTANCE FROM PROPOSED\*

LOCATION TO NEAREST  
PROPERTY OR LEASE LINE, FT.  
(Also to nearest drlg. unit line, if any)

18. DISTANCE FROM PROPOSED LOCATION\*

TO NEAREST WELL, DRILLING, COMPLETED,  
OR APPLIED FOR, ON THIS LEASE, FT.

21. ELEVATIONS (Show whether DF, RT, GR, etc.)

4145 G.L.

23.

## PROPOSED CASING AND CEMENTING PROGRAM

SIZE OF HOLE	SIZE OF CASING	WEIGHT PER FOOT	SETTING DEPTH	QUANTITY OF CEMENT
17 1/2	13 3/8	48	350	SUFF to CIRCULATE
11	8 5/8	32	4050	SUFF to TOP 2000'
7 7/8	5 1/2	17	TD	SUFF to TOP 8800' OR 100' ABOVE THE HUERO

IN ABOVE SPACE DESCRIBE PROPOSED PROGRAM: If proposal is to deepen or plug back, give data on present productive zone and proposed new productive zone. If proposal is to drill or deepen directionally, give pertinent data on subsurface locations and measured and true vertical depths. Give blowout preventer program, if any.

24.

SIGNED

Donald R. Karrasch

TITLE

SR. PROD. CLERK

DATE

10-23-68

(This space for Federal or State office use)

PERMIT NO.

APPROVAL DATE

APPROVED BY

TITLE

CONDITIONS OF APPROVAL, IF ANY:

OCT 25 1968

A. R. GROWIN

\*See Instructions On Reverse Side

DISTRICT ENGINEER

**NEW MEXICO OIL CONSERVATION COMMISSION  
WELL LOCATION AND ACREAGE DEDICATION PLAT**

Form C-102  
Supersedes C-128  
Effective 1-1-65

All distances must be from the outer boundaries of the Section.

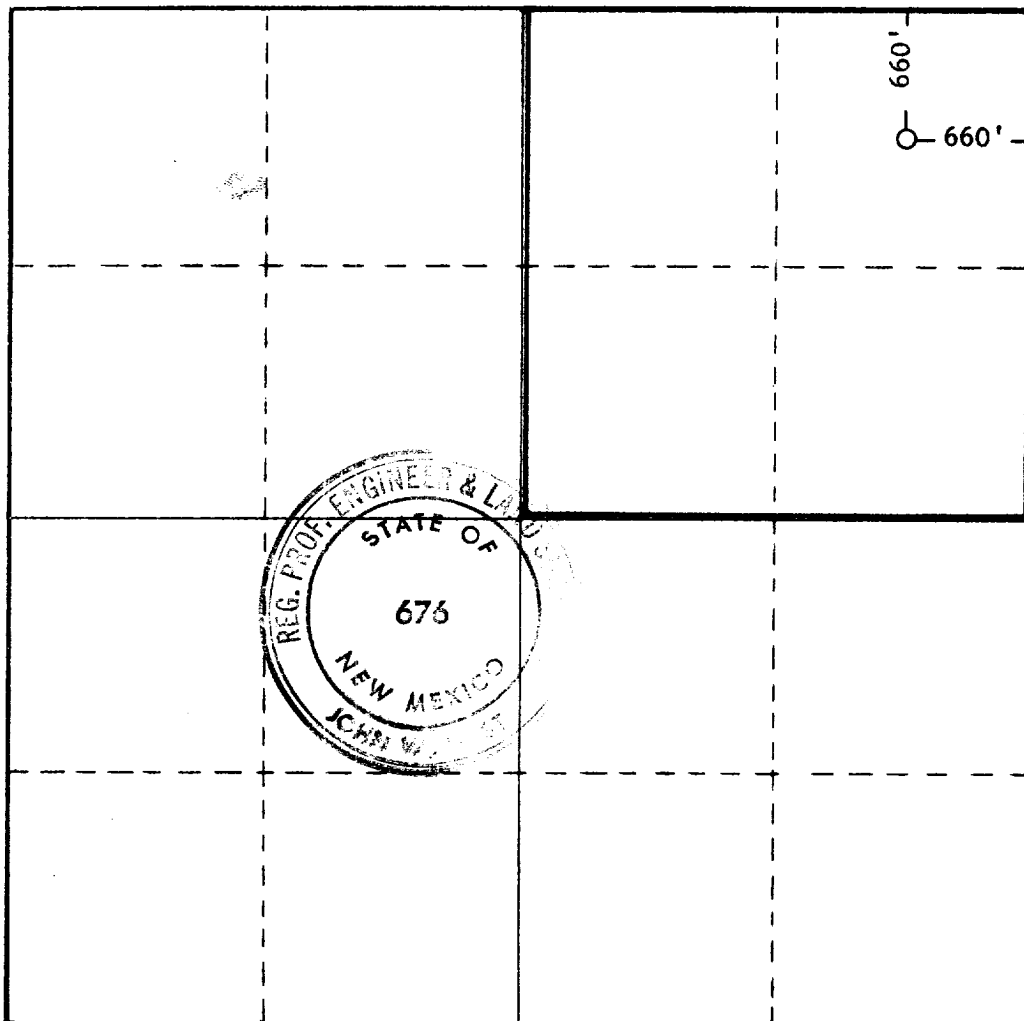
Operator <b>TENNECO OIL COMPANY</b>			Lease <b>MORTON FEDERAL 66</b>		Well No. <b>1</b>
Unit Letter <b>A</b>	Section <b>12</b>	Township <b>9 SOUTH</b>	Range <b>35 EAST</b>	County <b>LEA</b>	
Actual Footage Location of Well: <div style="display: flex; justify-content: space-between;"> <span><b>660</b> feet from the <b>NORTH</b> line and</span> <span><b>660</b> feet from the <b>EAST</b> line</span> </div>					
Ground Level Elev. <b>4145</b>	Producing Formation <b>BOUGH C</b>	Pool <b>UNDESIGNATED</b>		Dedicated Acreage: <b>NE 1/4 160</b> Acres	

1. Outline the acreage dedicated to the subject well by colored pencil or hachure marks on the plat below.
2. If more than one lease is dedicated to the well, outline each and identify the ownership thereof (both as to working interest and royalty).
3. If more than one lease of different ownership is dedicated to the well, have the interests of all owners been consolidated by communitization, unitization, force-pooling, etc?

☐ Yes ☒ No If answer is "yes," type of consolidation \_\_\_\_\_

If answer is "no," list the owners and tract descriptions which have actually been consolidated. (Use reverse side of this form if necessary.) \_\_\_\_\_

No allowable will be assigned to the well until all interests have been consolidated (by communitization, unitization, forced-pooling, or otherwise) or until a non-standard unit, eliminating such interests, has been approved by the Commission.



**CERTIFICATION**

I hereby certify that the information contained herein is true and complete to the best of my knowledge and belief.

Name  
*Arnold Blankenship*  
Position  
**DRILLING ENGINEER**  
Company  
**TENNECO OIL COMPANY**  
Date  
**10-23-1968**

I hereby certify that the well location shown on this plat was plotted from field notes of actual surveys made by me or under my supervision, and that the same is true and correct to the best of my knowledge and belief.

Date Surveyed  
**10-23-1968**

Registered Professional Engineer and/or Land Surveyor

*John West*  
Certificate No.  
**676**



173