

NEW MEXICO OIL CONSERVATION COMMISSION
WELL LOCATION AND ACREAGE DEDICATION PLAT

Form C-102
Supersedes C-128
Effective 1-1-65

All distances must be from the outer boundaries of the Section.

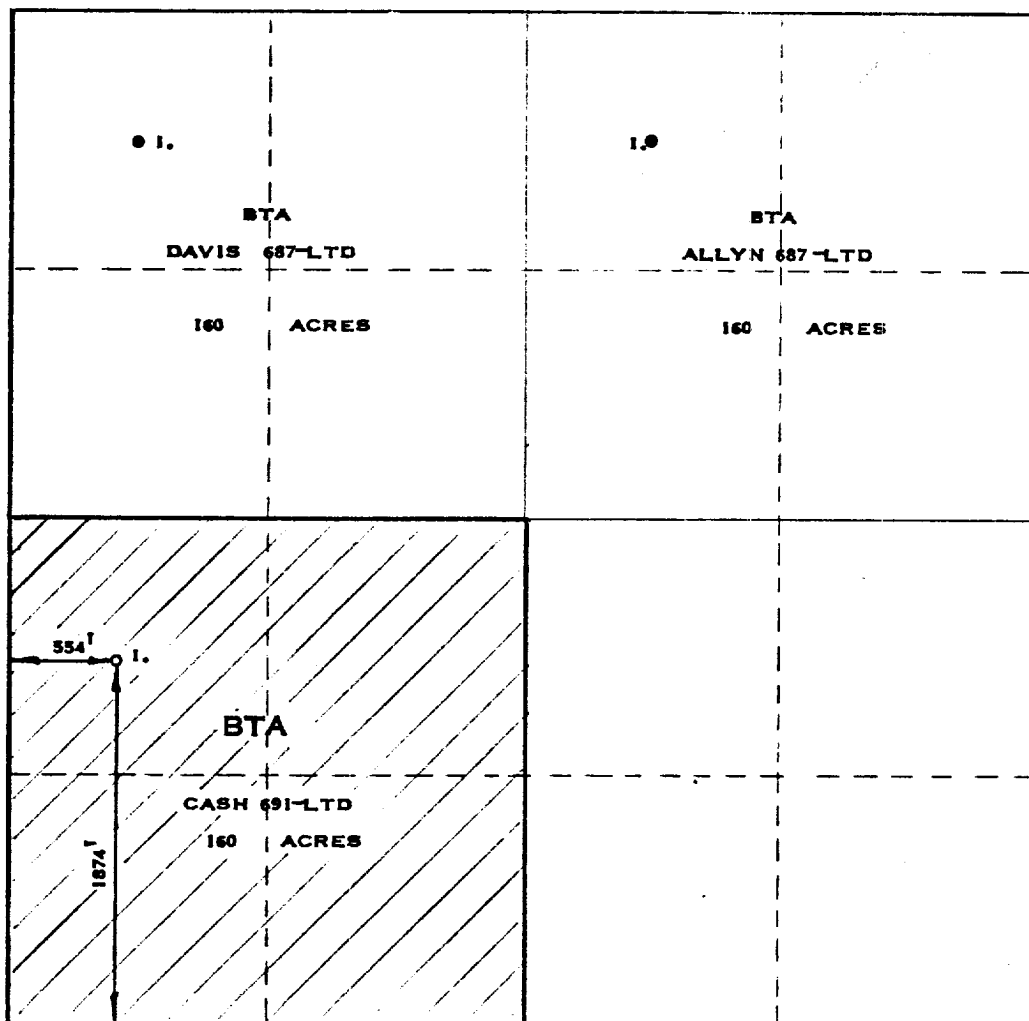
Operator BTA OIL PRODUCERS			Lease CASH 691 - LTD		Well No. 1
Unit Letter "L"	Section 9	Township 9-S	Range 36-E	County LEA	
Actual Footage Location of Well:					
1874 feet from the SOUTH line and		554 feet from the WEST line			
Ground Level Elev. 4067	Producing Formation PENNSYLVANIAN	Pool MIDDLE ALLISON PENN EXT.	Dedicated Acreage: 160 Acres		

1. Outline the acreage dedicated to the subject well by colored pencil or hachure marks on the plat below.
2. If more than one lease is dedicated to the well, outline each and identify the ownership thereof (both as to working interest and royalty).
3. If more than one lease of different ownership is dedicated to the well, have the interests of all owners been consolidated by communitization, unitization, force-pooling, etc?

☐ Yes ☐ No If answer is "yes," type of consolidation _____

If answer is "no," list the owners and tract descriptions which have actually been consolidated. (Use reverse side of this form if necessary.) _____

No allowable will be assigned to the well until all interests have been consolidated (by communitization, unitization, forced-pooling, or otherwise) or until a non-standard unit, eliminating such interests, has been approved by the Commission.



CERTIFICATION

I hereby certify that the information contained herein is true and complete to the best of my knowledge and belief.

Name Max A. Schumann Jr.
Position Drilling Manager
Company BTA Oil Producers
Date July 17, 1969

I hereby certify that the well location shown on this plat was plotted from field notes of actual surveys made by me or under my supervision, and that the same is true and correct to the best of my knowledge and belief.

Date Surveyed
JULY 1, 1969

Registered Professional Engineer and ☒ Land Surveyor

Max A. Schumann Jr.
MAX A. SCHUMANN JR.
Certificate No. 1510

1510