

NEW MEXICO OIL CONSERVATION COMMISSION
WELL LOCATION AND ACREAGE DEDICATION PLAT

Form C-102
Supersedes C-128
Effective 1-1-65

All distances must be from the outer boundaries of the Section.

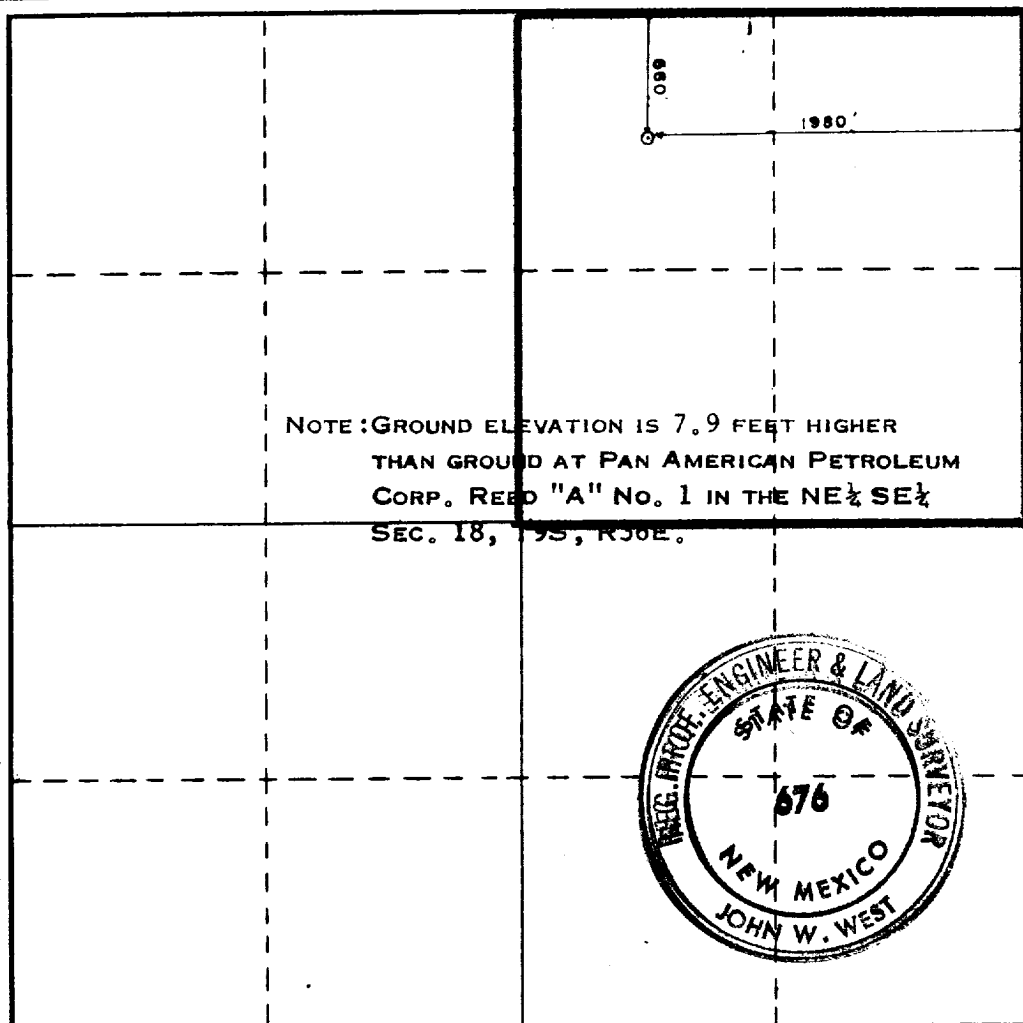
Operator ROGER C. HANKS			Lease FORD		Well No. 1
Unit Letter B	Section 18	Township 9 SOUTH	Range 36 EAST	County LEA	
Actual Footage Location of Well: 660 feet from the NORTH line and 1980 feet from the EAST line					
Ground Level Elev. 4092.9'	Producing Formation Bough "C"		Pool Undesignated	Dedicated Acreage: 160 Acres	

1. Outline the acreage dedicated to the subject well by colored pencil or hatchure marks on the plat below.
2. If more than one lease is dedicated to the well, outline each and identify the ownership thereof (both as to working interest and royalty).
3. If more than one lease of different ownership is dedicated to the well, have the interests of all owners been consolidated by communitization, unitization, force-pooling, etc?

☐ Yes ☐ No If answer is "yes," type of consolidation _____

If answer is "no," list the owners and tract descriptions which have actually been consolidated. (Use reverse side of this form if necessary.) _____

No allowable will be assigned to the well until all interests have been consolidated (by communitization, unitization, forced-pooling, or otherwise) or until a non-standard unit, eliminating such interests, has been approved by the Commission.



CERTIFICATION

I hereby certify that the information contained herein is true and complete to the best of my knowledge and belief.

Roger C. Hanks
Name

Wanda Sanders
Position

Operator

Company

Roger C. Hanks

Date

April 27, 1970

I hereby certify that the well location shown on this plat was plotted from field notes of actual surveys made by me or under my supervision, and that the same is true and correct to the best of my knowledge and belief.

Date Surveyed

FEBRUARY 11, 1970

Registered Professional Engineer and/or Land Surveyor

John W. West
Certificate No.

676

0 330 660 990 1320 1650 1980 2310 2640 2970 3300 3630 3960 4290 4620 4950 5280 5610 5940 6270 6600

173

RECEIVED

APR 20 1970

OL. COMM. - 100. 01