

COUNTY	LEA	FIELD	Bagley, N.	STATE	NM	30-025-23501
OPR	MEADCO PROPERTIES					MAP
	1 Gulf-State					
	Sec 27, T-11-S, R-33-E					CO-ORD
	660' FSL, 2130' FEL of Sec.					
	Spd 5-7-70		CLASS		EL 42628	
	Cmp 6-19-70		FORMATION	DATUM	FORMATION	DATUM
CSG & SX TUBING						
12 3/4" at 405' w/375 sx						
8 5/8" at 3750' w/500 sx						
4 1/2" at 10,025' w/500 sx						
LOGS EL GR RA IND HC A						
			TD 10,025'			

IP (Lower Pennsylvanian) Perf 9662-9881' F 205 BOPD + 315 BW.  
 Pot based on 24 hr test thru 40/64" chk.; GOR 1449., Grav 46.8,  
 CP pkr, TP 210#.

Distribution limited and publication prohibited by subscribers' agreement.  
 Reproduction rights reserved by Williams & Lee Scouting Service, Inc.

CONT.	Moran	PROP DEPTH	10,300'	TYPE
DATE				

F.R. 5-4-70; Opr's Elev 4254' GL  
 PD 10,300' - Pennsylvanian  
 Contr. - Moran

6-8-70 ~~AMEND~~ REFERENCE NUMBER: Formerly reported as  
 30-025-23500.

5-11-70 Drlg 3600' anhy  
 5-19-70 Drlg 7130'  
 5-26-70 Drlg 8750' lm  
 6-3-70 TD 10,025', WOO  
 6-9-70 TD 10,025', Prep to perf  
 6-16-70 TD 10,025', Swbg  
 Perf @ 9662', 9664', 9667', 9816', 9818',  
 9824', 9848', 9850', 9861', 9862', 9879',  
 9881' w/1 SPF  
 Acid (9816-81') 2000 gals  
 Acid (9862-67') 2000 gals

6-29-70 TD 10,025', Tstg

LEA Bagley, N.  
MEADCO PROPERTIES 1 Gulf-State

Sec 27, T11S, R33E  
Page 2

7-6-70 TD 10,025', COMPLETE  
LOG TOPS: Anhydrite 1552', Yates 2436',  
Seven Rivers 2568', San Andres 3640',  
Glorieta 5130', Tubb 6502', Abo 7300',  
Wolfcamp 8436', Pennsylvanian 8850', Bough  
"C" 8930', Canyon 9255', Strawn 9785'  
7-9-70 COMPLETION REPORTED

**NEW MEXICO OIL CONSERVATION COMMISSION  
WELL LOCATION AND ACREAGE DEDICATION PLAT**

Form C-128  
Supersedes C-128  
Effective 1-1-65

All distances must be from the outer boundaries of the Section.

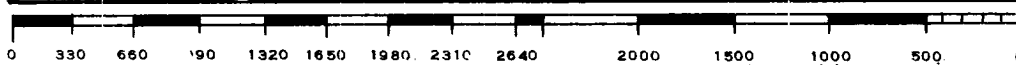
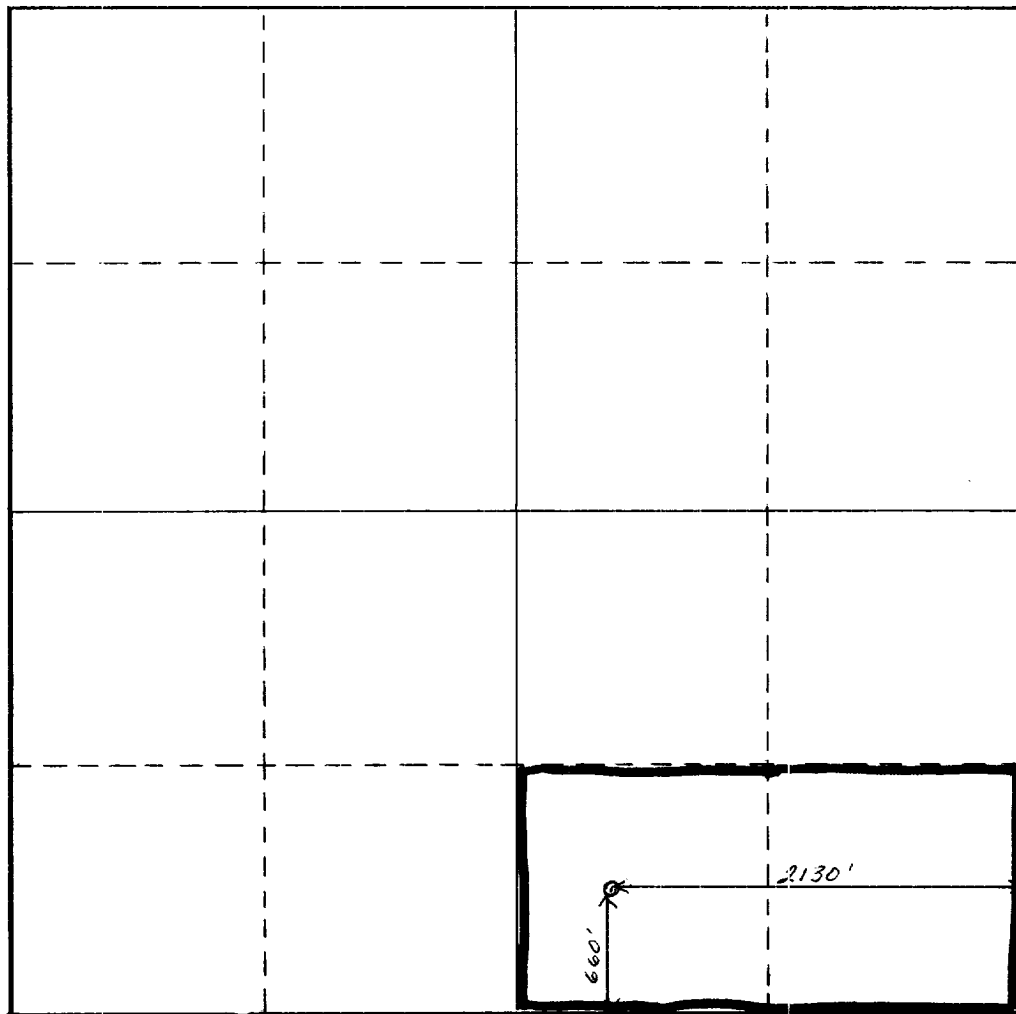
Operator <b>Meadco Properties, Ltd.</b>			Lease <b>Gulf State</b>		Well No. <b>1</b>
Unit Letter <b>0</b>	Section <b>27</b>	Township <b>11 South</b>	Range <b>33 East</b>	County <b>Lea</b>	
Actual Footage Location of Well: <div style="display: flex; justify-content: space-between; align-items: center;"> <span><b>660</b> feet from the <b>South</b> line and</span> <span><b>2130</b> feet from the <b>East</b> line</span> </div>					
Ground Level Elev. <b>4254.7</b>	Producing Formation <b>Lower Penn</b>		Pool <b>North Bagley Penn</b>		Dedicated Acreage: <b>80</b> Acres

1. Outline the acreage dedicated to the subject well by colored pencil or hachure marks on the plat below.
2. If more than one lease is dedicated to the well, outline each and identify the ownership thereof (both as to working interest and royalty).
3. If more than one lease of different ownership is dedicated to the well, have the interests of all owners been consolidated by communitization, unitization, force-pooling, etc?

☐ Yes    ☐ No    If answer is "yes," type of consolidation \_\_\_\_\_

If answer is "no," list the owners and tract descriptions which have actually been consolidated. (Use reverse side of this form if necessary.) \_\_\_\_\_

No allowable will be assigned to the well until all interests have been consolidated (by communitization, unitization, forced-pooling, or otherwise) or until a non-standard unit, eliminating such interests, has been approved by the Commission.



**CERTIFICATION**

*I hereby certify that the information contained herein is true and complete to the best of my knowledge and belief.*

*Bill C. Cotner*

Name  
**Bill C. Cotner**

Position  
**Owner**

Company  
**Meadco Properties, Ltd.**

Date  
**3/23/72**

*I hereby certify that the well location shown on this plat was plotted from field notes of actual surveys made by me or under my supervision, and that the same is true and correct to the best of my knowledge and belief.*

Date Surveyed  
**4/29/70**

Registered Professional Engineer  
and/or Land Surveyor

By **John W. West**

Certificate No.  
**676**

RECEIVED

MAR 2 1972

OIL CONSERVATION COMM.  
HOODE, R. M.