

COUNTY LEA FIELD Bagley, N. STATE NM 30-025-23631

OPR ANDERSON OIL & GAS CO. MAP

1 Mathers
Sec 33, T-11-S, R-33-E CO-ORD

1980' FSL, 1935' FEL of Sec
Spd 11-16-70

Cmp 1-8-71	CLASS		EL	
	FORMATION	DATUM	FORMATION	DATUM
CSG & SX - TUBING				
13 3/8" at 404' w/400 sx				
8 5/8" at 3740' w/300 sx				
5 1/2" at 10,130' w/325 sx				
LOGS EL GR RA IND HC A				
	TD 10,130'; PBD 10,054'			

IP (Pennsylvanian) Perfs 9690-10,030' P 167 BOPD + 275 BW. Pot based on 24 hr test. GOR 1281; Grav 44.

Distribution limited and publication prohibited by subscribers' agreement.
 Reproduction rights reserved by Williams & Lee Scouting Service, Inc.

CONT. Moran PROP DEPTH 10,200' TYPE RT
 DATE

F.R. 11-17-70; Opr's Elev. 4265' GL
 PD 10,200' RT (Lower Pennsylvanian)
 Contractor - Moran

11-17-70 TD 404'; WOC
 11-23-70 Drlg. 4260' 1m
 12-1-70 Drlg. 7255'
 12-7-70 Drlg. 8760' 1m
 12-14-70 TD 10,130'; MORT
 12-21-70 TD 10,130'; PBD 10,054'; Prep Perf
 1-4-71 TD 10,130'; PBD 10,054'; Tstg
 Perf (Penn) @ 9690', 9692', 9694', 9696', 9698'
 Perf (Strawn) @ 9868', 9869', 9877', 9879',
 9884', 9888', 9890', 9955', 9956', 10,002',
 10,004', 10,006', 10,008', 10,010', 10,029',
 10,030'

1-4-71 Continued
Acid (9690-10,030') 5000 gals
Flwd 99 BO + 33 BW in 24 hrs thru
30/64" chk (9690-10,030')

1-11-71 TD 10,130'; PBD 10,054'; SI

1-18-71 TD 10,130'; PBD 10,054'; COMPLETE
LOG TOPS: Yates 2408', San Andres 3710',
Glorieta 5110', Tubb 6480', Abo 7267',
Wolfcamp 8412', Bough "C" 8950', Canyon
9280', Strawn 9838'

1-21-71 COMPLETION REPORTED

NEW MEXICO OIL CONSERVATION COMMISSION
WELL LOCATION AND ACREAGE DEDICATION PLAT

Form 7-1
Superseded G-121
Effective 1-1-71

All distances must be from the outer boundaries of the Section.

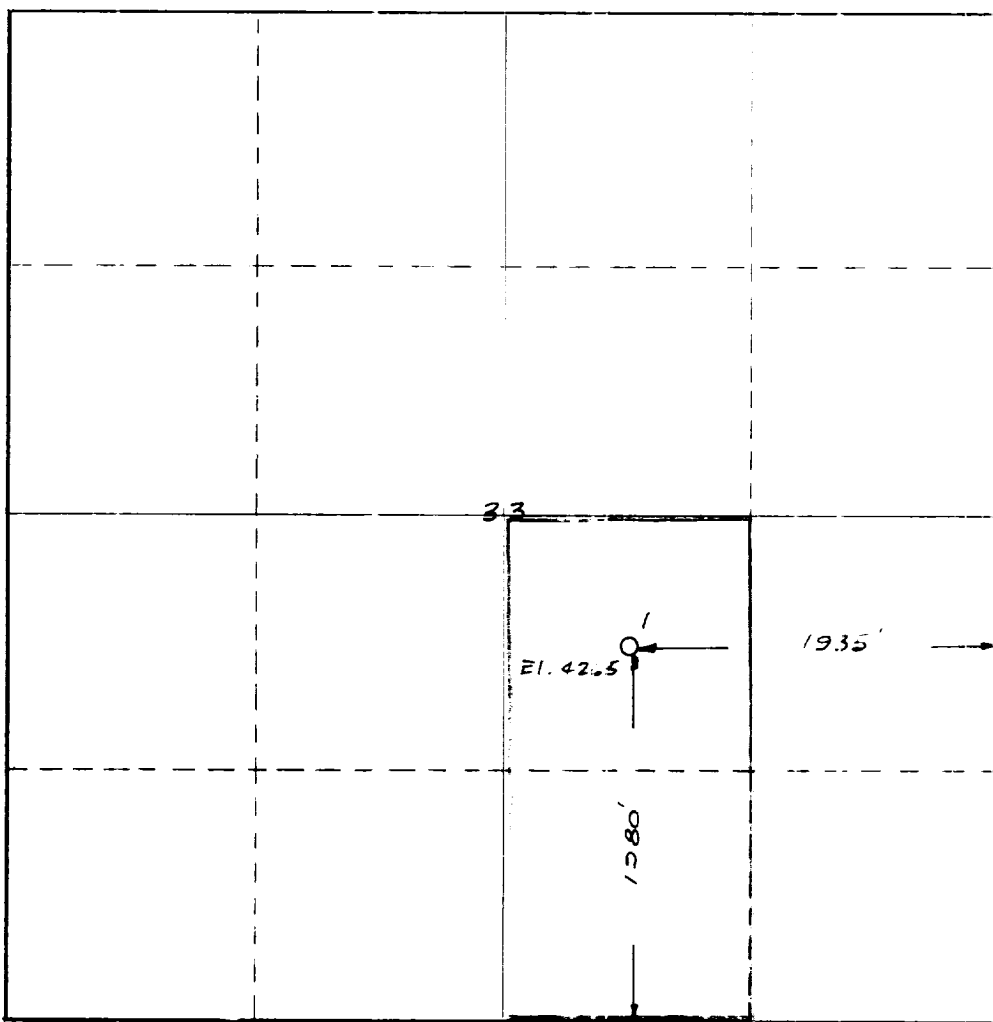
Lessor Anderson Oil & Gas Company		Lease Mathers			Well No. 1
Map Letter J	Section 33	Township 11 S	Range 33 E	County Lea	
Actual Footage Location of Well: 1980 feet from the South and 1935 feet from the East line.					
Ground Level Elev. 4,265	Producing Formation Lower Penn		Pool Bagley Penn No.	Dedicated Acreage 80	

- Outline the acreage dedicated to the subject well by colored pencil or hachure marks on the plat below.
- If more than one lease is dedicated to the well, outline each and identify the ownership thereof (both as to working interest and royalty).
- If more than one lease of different ownership is dedicated to the well, have the interests of all owners been consolidated by communitization, unitization, force-pooling, etc?

Yes No If answer is "yes," type of consolidation _____

If answer is "no," list the owners and tract descriptions which have actually been consolidated. (Use reverse side of this form if necessary.) _____

No allowable will be assigned to the well until all interests have been consolidated (by communitization, unitization, forced-pooling, or otherwise) or until a non-standard unit, eliminating such interests, has been approved by the Commission.



CERTIFICATION

I hereby certify that the information contained herein is true and complete to the best of my knowledge and belief.

Name

William G. Kern

Position

Engineer

Company

Anderson Oil & Gas Company

Date

January 14, 1971

I hereby certify that the well location shown on this plat was plotted from field notes of actual surveys made by me or under my supervision, and that the same is true and correct to the best of my knowledge and belief.

Date Surveyed

Nov. 6, 1970

Registered Professional Engineer and/or Land Surveyor

Marcel E. Show

Certificate No.

2189