

UNITED STATES  
DEPARTMENT OF THE INTERIOR  
GEOLOGICAL SURVEY

## APPLICATION FOR PERMIT TO DRILL, DEEPEN, OR PLUG BACK

## 1A. TYPE OF WORK

DRILL ☒DEEPEN ☐PLUG BACK ☐

## B. TYPE OF WELL

OIL  
WELL ☒GAS  
WELL ☐

OTHER

SINGLE  
ZONE ☐MULTIPLE  
ZONE ☐

## 2. NAME OF OPERATOR

Delaware-Apache Corporation

## 3. ADDRESS OF OPERATOR

1720 Wilco Bldg. Midland, Texas 79701

## 4. LOCATION OF WELL (Report location clearly and in accordance with any State requirements.)\*

At surface 1980' FSL &amp; 1980' FWL

At proposed prod. zone Same

## 14. DISTANCE IN MILES AND DIRECTION FROM NEAREST TOWN OR POST OFFICE\*

9 Miles NW of Crossroads

## 15. DISTANCE FROM PROPOSED\*

LOCATION TO NEAREST  
PROPERTY OR LEASE LINE, FT.  
(Also to nearest drlg. unit line, if any)

1980'

## 16. NO. OF ACRES IN LEASE

160

## 17. NO. OF ACRES ASSIGNED

TO THIS WELL 160 160

## 18. DISTANCE FROM PROPOSED LOCATION\*

TO NEAREST WELL, DRILLING, COMPLETED,  
OR APPLIED FOR, ON THIS LEASE, FT.

N/A

## 19. PROPOSED DEPTH

9800'

## 20. ROTARY OR CABLE TOOLS

Rotary

## 21. ELEVATIONS (Show whether DF, RT, GR, etc.)

GR 4293'

## 22. APPROX. DATE WORK WILL START\*

2-1-71

## 23.

## PROPOSED CASING AND CEMENTING PROGRAM

SIZE OF HOLE	SIZE OF CASING	WEIGHT PER FOOT	SETTING DEPTH	QUANTITY OF CEMENT	REMARKS
15"	11-3/4"	42#	375'	300 SX	circulate
11"	8-5/8"	24 & 32#	4000'	400 SX	
7-7/8"	5-1/2"	17#	9800'	400 SX	

Surface 900 Series, Double Ram, 2000 Psi  
Intermediate 900 Series, Double Ram, 3000 Psi

IN ABOVE SPACE DESCRIBE PROPOSED PROGRAM: If proposal is to deepen or plug back, give data on present productive zone and proposed new productive zone. If proposal is to drill or deepen directionally, give pertinent data on subsurface locations and measured and true vertical depths. Give blowout preventer program, if any.

## 24.

SIGNED

*Bonnie J. Husband*

TITLE

Production Clerk

DATE

1-21-71

(This space for Federal or State office use)

PERMIT NO. \_\_\_\_\_

APPROVED BY \_\_\_\_\_

CONDITIONS OF APPROVAL, IF ANY:

TITLE

APPROVED

JAN 22 1971

ARTHUR R. BROWN  
DISTRICT ENGINEER

\*See Instructions On Reverse Side

RECEIVED

JAN 20 1971

OIL CONSERVATION COMM.  
HOBBS, N. M.

NEW ICO OIL CONSERVATION COMMISSION  
WELL LOCATION AND ACREAGE DEDICATION PLAT

Form C-102  
Supersedes C-128  
Effective 1-1-65

All distances must be from the outer boundaries of the Section.

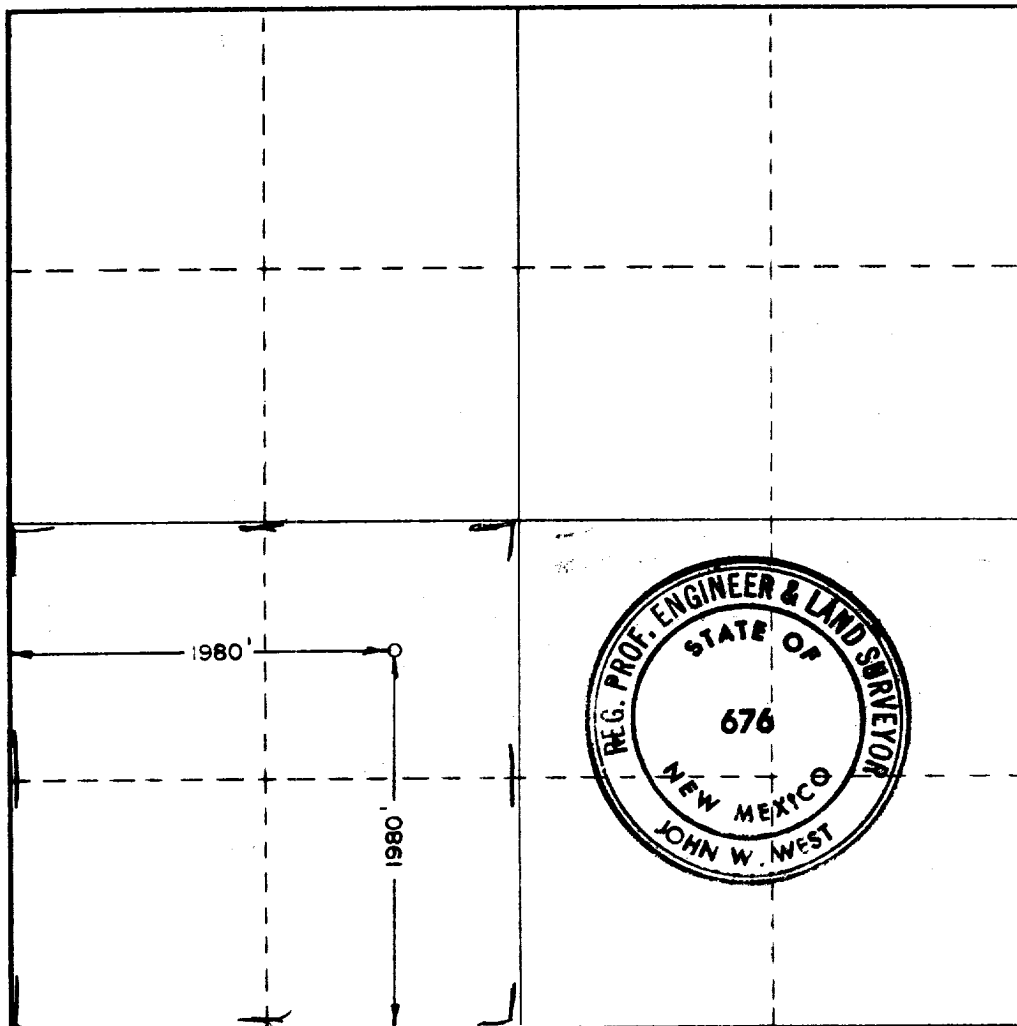
Operator <b>Delaware-APACHE CORPORATION</b>		Lease <b>SUNOCO FEDERAL</b>		Well No. <b>1</b>	
Unit Letter <b>K</b>	Section <b>5</b>	Township <b>9 SOUTH</b>	Range <b>34 EAST</b>	County <b>LEA</b>	
Actual Footage Location of Well: <b>1980</b> feet from the <b>SOUTH</b> line and <b>1980</b> feet from the <b>WEST</b> line					
Ground Level Elev. <b>4293</b>	Producing Formation <b>Bough "C"</b>		Pool <b>Vada Penn</b>		Dedicated Acreage: <b>160</b> Acres

1. Outline the acreage dedicated to the subject well by colored pencil or hachure marks on the plat below.
2. If more than one lease is dedicated to the well, outline each and identify the ownership thereof (both as to working interest and royalty).
3. If more than one lease of different ownership is dedicated to the well, have the interests of all owners been consolidated by communitization, unitization, force-pooling, etc?

☐ Yes ☐ No If answer is "yes," type of consolidation \_\_\_\_\_

If answer is "no," list the owners and tract descriptions which have actually been consolidated. (Use reverse side of this form if necessary.) \_\_\_\_\_

No allowable will be assigned to the well until all interests have been consolidated (by communitization, unitization, forced-pooling, or otherwise) or until a non-standard unit, eliminating such interests, has been approved by the Commission.



CERTIFICATION

I hereby certify that the information contained herein is true and complete to the best of my knowledge and belief.

*Bonnie J. Husband*  
Name

**Bonnie J. Husband**  
Position

**Production Clerk**  
Company

**Delaware-Apache Corp.**  
Date

**1-21-71**

I hereby certify that the well location shown on this plat was plotted from field notes of actual surveys made by me or under my supervision, and that the same is true and correct to the best of my knowledge and belief.

Date Surveyed

**1-20-1971**

Registered Professional Engineer  
and/or Land Surveyor

*John W. West*  
Certificate No.

**676**

RECEIVED

JAN 20 1971

OIL CONSERVATION COMAL  
HOBBBS, N. M.