

**NEW MEXICO OIL CONSERVATION COMMISSION
WELL LOCATION AND ACREAGE DEDICATION PLAT**

Form C-102
Supersedes C-128
Effective 1-1-65

All distances must be from the outer boundaries of the Section.

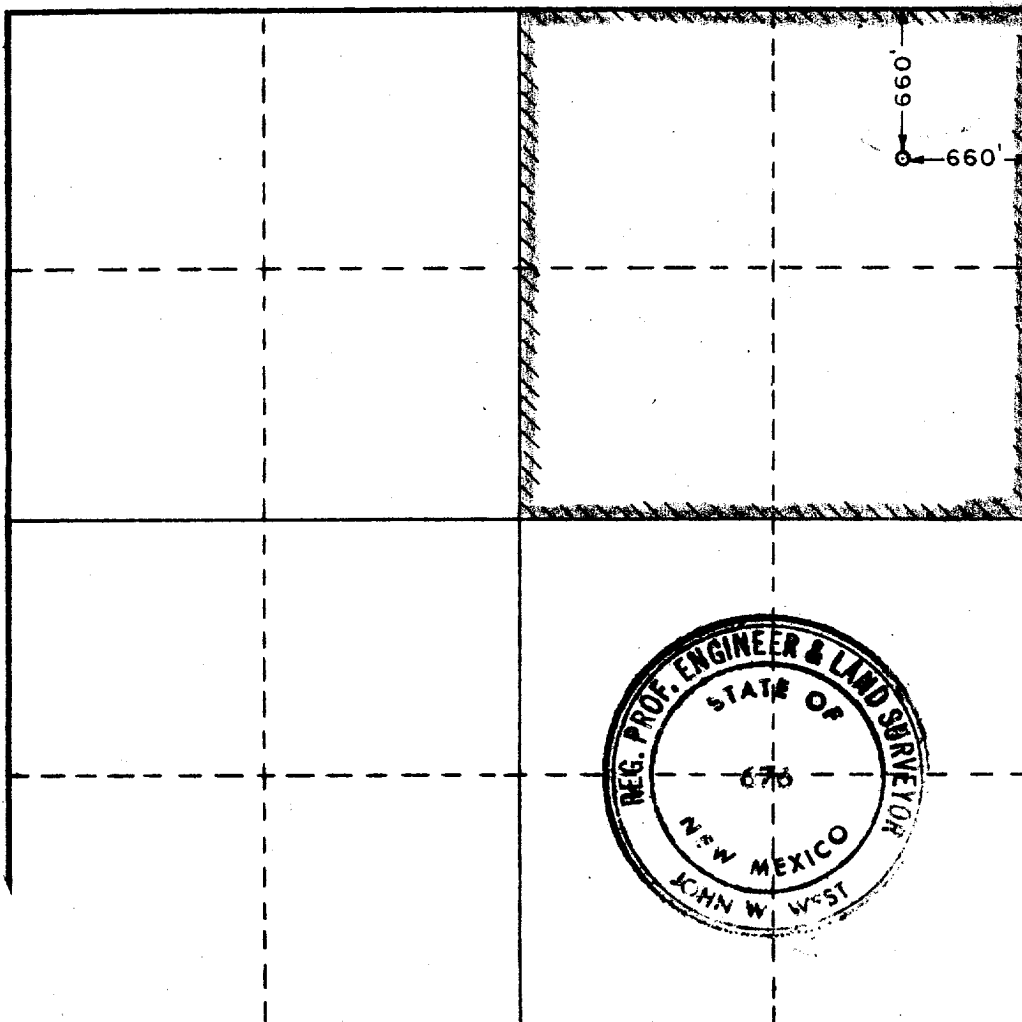
Operator BELCO PETROLEUM CORP.			Lease HENRY			Well No. 1		
Unit Letter A	Section 5	Township 9 SOUTH	Range 35 EAST	County LEA				
Actual Footage Location of Well: 660 feet from the NORTH line and 660 feet from the EAST line								
Ground Level Elev. 4199	Producing Formation BOUGH C			Pool VADA PENN			Dedicated Acreage: 160.38 Acres	

1. Outline the acreage dedicated to the subject well by colored pencil or hachure marks on the plat below.
2. If more than one lease is dedicated to the well, outline each and identify the ownership thereof (both as to working interest and royalty).
3. If more than one lease of different ownership is dedicated to the well, have the interests of all owners been consolidated by communitization, unitization, force-pooling, etc?

☐ Yes ☐ No If answer is "yes," type of consolidation _____

If answer is "no," list the owners and tract descriptions which have actually been consolidated. (Use reverse side of this form if necessary.) _____

No allowable will be assigned to the well until all interests have been consolidated (by communitization, unitization, forced-pooling, or otherwise) or until a non-standard unit, eliminating such interests, has been approved by the Commission.



CERTIFICATION

I hereby certify that the information contained herein is true and complete to the best of my knowledge and belief.

Warren D. Roach

Name
Warren D. Roach

Position
Agent

Company
Belco Petroleum Corp.

Date
March 13, 1971

I hereby certify that the well location shown on this plat was plotted from field notes of actual surveys made by me or under my supervision, and that the same is true and correct to the best of my knowledge and belief.

Date Surveyed
MARCH 10, 1971

Registered Professional Engineer and/or Land Surveyor

John W. West
Certificate No. **676**

660 190 1320 1680 1980 2310 2640 2000 1500 1000 500 0

173

RECEIVED

MAY 1 1971

OIL CONSERVATION COMM.
HOUSTON, TEXAS