

UNITED STATES
DEPARTMENT OF THE INTERIOR
GEOLOGICAL SURVEY

APPLICATION FOR PERMIT TO DRILL, DEEPEN, OR PLUG BACK

1a. TYPE OF WORK
DRILL ☒ DEEPEN ☐ PLUG BACK ☐

b. TYPE OF WELL
OIL WELL ☒ GAS WELL ☐ OTHER ☐ SINGLE ZONE ☐ MULTIPLE ZONE ☐

2. NAME OF OPERATOR
D & B OIL, INC.

3. ADDRESS OF OPERATOR
1003 V & J Tower, Midland, Texas 79701

4. LOCATION OF WELL (Report location clearly and in accordance with any State requirements.)*
At surface
Unit ~~X~~ - 1980' FNL & 1980' FWL
At proposed prod. zone

14. DISTANCE IN MILES AND DIRECTION FROM NEAREST TOWN OR POST OFFICE*
14 miles East of Crossroads

15. DISTANCE FROM PROPOSED* LOCATION TO NEAREST PROPERTY OR LEASE LINE, FT. (Also to nearest drlg. unit line, if any)
660

18. DISTANCE FROM PROPOSED LOCATION* TO NEAREST WELL, DRILLING, COMPLETED, OR APPLIED FOR, ON THIS LEASE, FT.
N/A

21. ELEVATIONS (Show whether DF, RT, GR, etc.)
3971 GL

23. PROPOSED CASING AND CEMENTING PROGRAM

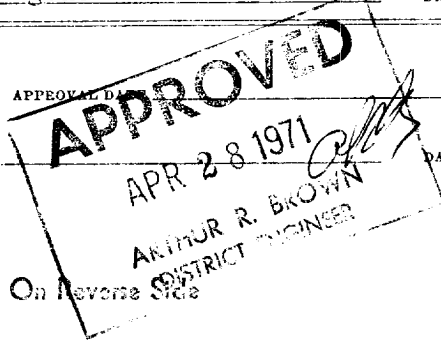
SIZE OF HOLE	SIZE OF CASING	WEIGHT PER FOOT	SETTING DEPTH	QUANTITY OF CEMENT
12-1/2	8-5/8	24#	400	200 sx Circulate
7-7/8	4-1/2	9.5#	5050	330 sx

- Double ram blowout preventor will be used.
- Form C-102 and 9-1123 are attached.
- Completion will be through casing perforations with acid to stimulate.

IN ABOVE SPACE DESCRIBE PROPOSED PROGRAM: If proposal is to deepen or plug back, give data on present productive zone and proposed new productive zone. If proposal is to drill or deepen directionally, give pertinent data on subsurface locations and measured and true vertical depths. Give blowout preventer program, if any.

24. SIGNED Zack Monroe (Zack Monroe) TITLE Agent DATE April 26, 1971
(This space for Federal or State office use)

PERMIT NO. _____ APPROVED BY _____ TITLE _____ DATE _____
CONDITIONS OF APPROVAL, IF ANY:



*See Instructions On Reverse Side

RECEIVED

MAY 4 1971

OIL CONSERVATION COMM.
HOBBS, N. M.

NEW MEXICO OIL CONSERVATION COMMISSION
WELL LOCATION AND ACREAGE DEDICATION PLAT

Form C-102
Supersedes C-128
Effective 1-1-63

All distances must be from the outer boundaries of the Section.

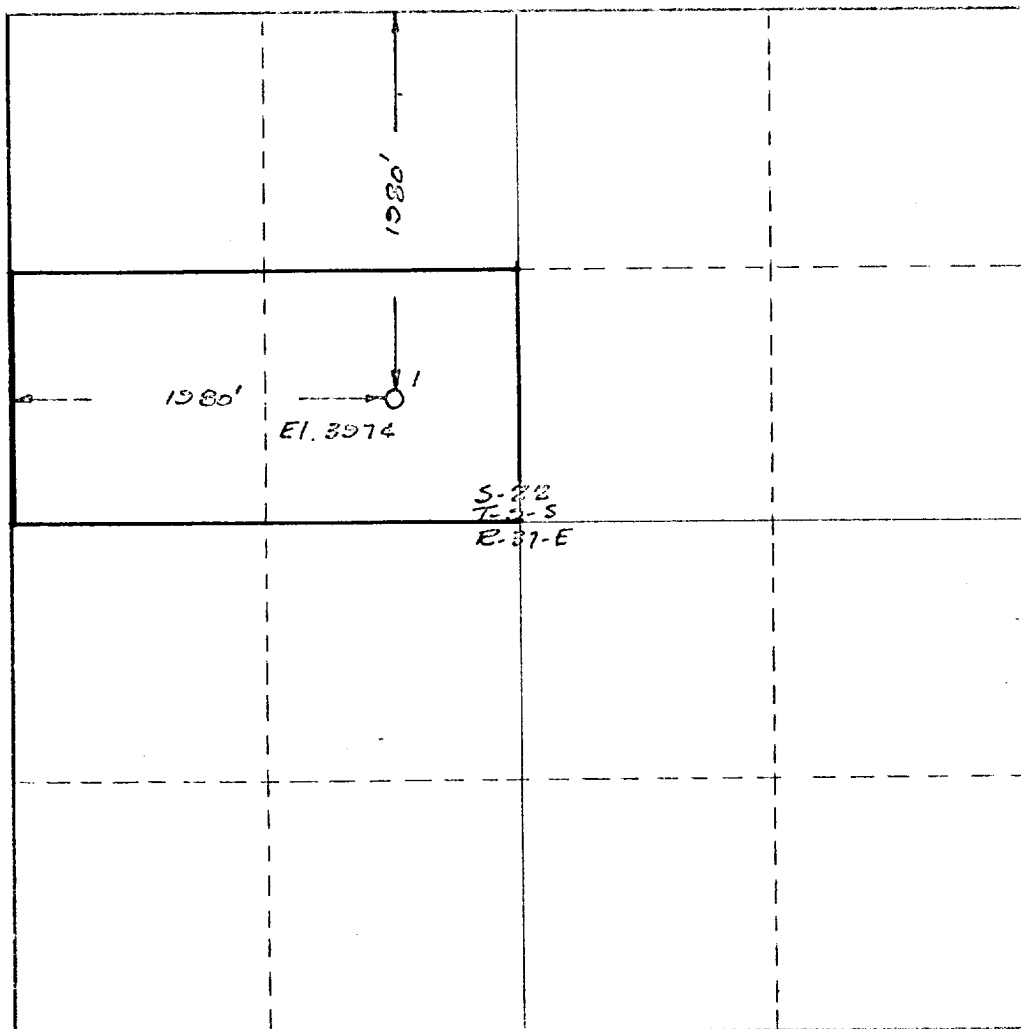
Operator D & B OIL, INC.		Lease CLAIR		Well No. 1
Unit Letter K F	Section 22	Township 9-S	Range 37-E	County Lea
Actual Postage Location of Well:				
1980 feet from the North line and		1980 feet from the W line		
Ground Level Elev. 3971	Producing Formation San Andres	Pool West Sawyer	Dedicated Acreage: 80 Acres	

1. Outline the acreage dedicated to the subject well by colored pencil or hatchure marks on the plat below.
2. If more than one lease is dedicated to the well, outline each and identify the ownership thereof (both as to working interest and royalty).
3. If more than one lease of different ownership is dedicated to the well, have the interests of all owners been consolidated by communitization, unitization, force-pooling, etc?

☐ Yes ☐ No If answer is "yes," type of consolidation _____

If answer is "no," list the owners and tract descriptions which have actually been consolidated. (Use reverse side of this form if necessary.) _____

No allowable will be assigned to the well until all interests have been consolidated (by communitization, unitization, forced-pooling, or otherwise) or until a non-standard unit, eliminating such interests, has been approved by the Commission.



CERTIFICATION

I hereby certify that the information contained herein is true and complete to the best of my knowledge and belief.

Name Zack Monroe
Agent

Position
D & B Oil, Inc.

Company
April 26, 1971

Date

I hereby certify that the well location shown on this plat was plotted from field notes of actual surveys made by me or under my supervision, and that the same is true and correct to the best of my knowledge and belief.

Date Surveyed
April 20, 1971

Registered Professional Engineer and/or Land Surveyor

Marle E. Brown
Certificate No.

2189

RECEIVED

MAY - 4 1971

OIL CONSERVATION COMM.
MOORE, W. M.