

UNITED STATES
DEPARTMENT OF THE INTERIOR
GEOLOGICAL SURVEY

TO O.C.E.

NM

5. LEASE DESIGNATION AND SERIAL NO.

11619 & 826271

6. IF INDIAN, ALLOTTEE OR TRIBE NAME

7. UNIT AGREEMENT NAME

8. FARM OR LEASE NAME

Lansdale Federal Comm.

9. WELL NO.

1

10. FIELD AND POOL, OR WILDCAT

Vada Penn

11. SEC., T., R., M., OR BLK.
AND SURVEY OR AREA

Sec. 6, T9S, R34E

12. COUNTY OR PARISH

Lea

13. STATE
New Mexico

APPLICATION FOR PERMIT TO DRILL, DEEPEN, OR PLUG BACK

1a. TYPE OF WORK

DRILL ☒

DEEPEN ☐

PLUG BACK ☐

b. TYPE OF WELL

OIL
WELL ☒

GAS
WELL ☐

OTHER

SINGLE
ZONE ☒

MULTIPLE
ZONE ☐

2. NAME OF OPERATOR

DELAWARE-APACHE CORPORATION

3. ADDRESS OF OPERATOR

1720 Wilco Bldg. Midland, Texas 79701

4. LOCATION OF WELL (Report location clearly and in accordance with any State requirements.)

At surface

1980' FS & 1980' FEL

At proposed prod. zone

Same

14. DISTANCE IN MILES AND DIRECTION FROM NEAREST TOWN OR POST OFFICE

12 miles NW of Crossroads, New Mexico

16. NO. OF ACRES IN LEASE

1980'

17. NO. OF ACRES ASSIGNED
TO THIS WELL

160

160

18. DISTANCE FROM PROPOSED LOCATION*
TO NEAREST WELL, DRILLING, COMPLETED,
OR APPLIED FOR, ON THIS LEASE, FT.

19. PROPOSED DEPTH

9800'

20. ROTARY OR CABLE TOOLS

Rotary

21. ELEVATIONS (Show whether DF, RT, GR, etc.)

Gr 4311.8'

22. APPROX. DATE WORK WILL START*

Immediately

23.

PROPOSED CASING AND CEMENTING PROGRAM

SIZE OF HOLE	SIZE OF CASING	WEIGHT PER FOOT	SETTING DEPTH	QUANTITY OF CEMENT
17-1/2"	12-3/4"	34#	375'	375 SX
11"	8-5/8"	24 & 32#	4000'	375 SX
7-7/8"	5-1/2"	17#	9800'	400 SX

Please call collect approval to drill 915 683-5261

IN ABOVE SPACE DESCRIBE PROPOSED PROGRAM: If proposal is to deepen or plug back, give data on present productive zone and proposed new productive zone. If proposal is to drill or deepen directionally, give pertinent data on subsurface locations and measured and true vertical depths. Give blowout preventer program, if any.

24.

SIGNED

Bonnie Husband

TITLE Production Clerk

DATE 7-26, 1971

(This space for Federal or State office use)

PERMIT NO.

APPROVAL DATE

APPROVED BY

TITLE

DATE

CONDITIONS OF APPROVAL, IF ANY:

APPROVED

JUL 27 1971

ARTHUR R. BROWN
DISTRICT ENGINEER

*See Instructions On Reverse Side

RECEIVED

AUG 3 1971

OIL CONSERVATION COMM.
HOBBS, N. M.

NEW MEXICO OIL CONSERVATION COMMISSION
WELL LOCATION AND ACREAGE DEDICATION PLAT

Form C-102
Supersedes C-128
Effective 1-1-65

All distances must be from the outer boundaries of the Section.

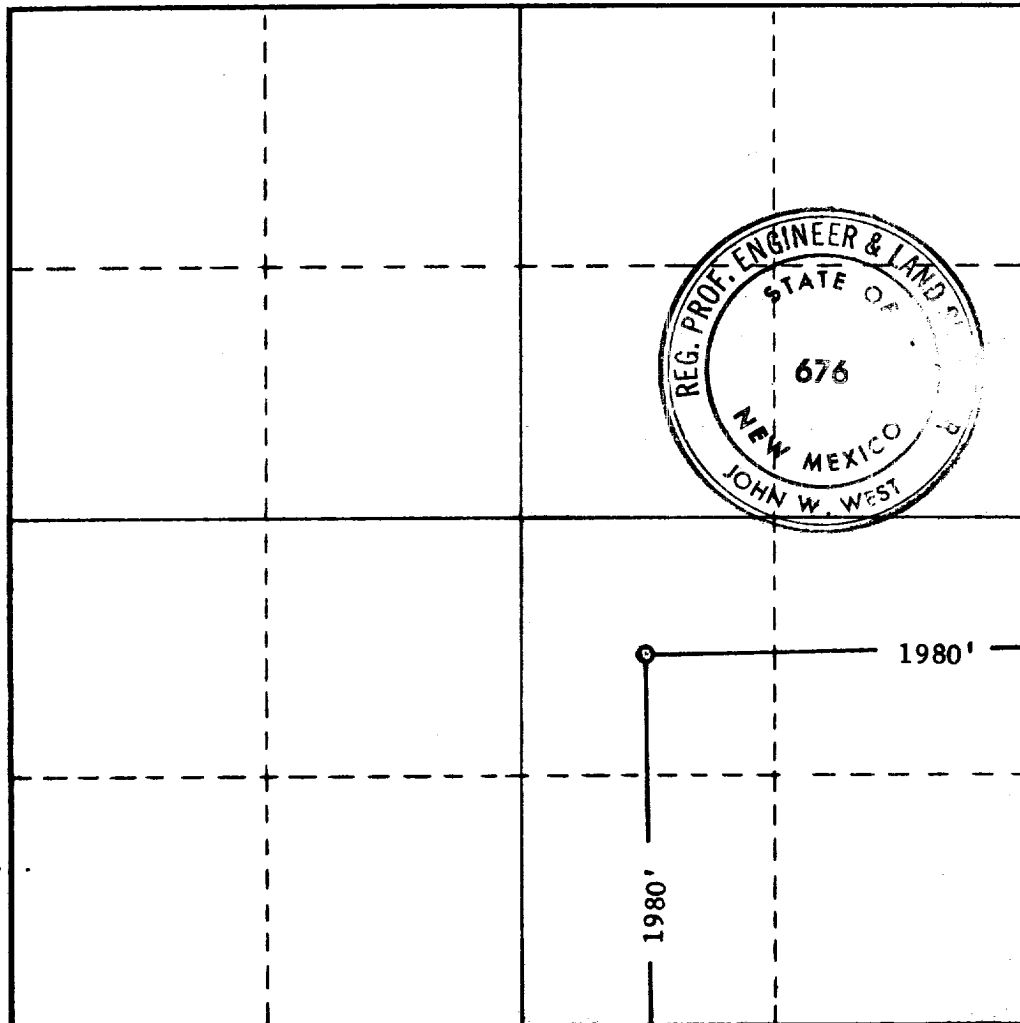
Operator DELAWARE APACHE CORP.			Lease LANSDALE FED. COM		Well No. 1
Unit Letter J	Section 6	Township 9 SOUTH	Range 34 EAST	County LEA	
Actual Footage Location of Well: 1980 feet from the SOUTH line and 1980 feet from the EAST line					
Ground Level Elev. 4311.8	Producing Formation Bough "C"		Pool Vada Penn		Dedicated Acreage: 160 Acres

1. Outline the acreage dedicated to the subject well by colored pencil or hachure marks on the plat below.
2. If more than one lease is dedicated to the well, outline each and identify the ownership thereof (both as to working interest and royalty).
3. If more than one lease of different ownership is dedicated to the well, have the interests of all owners been consolidated by communitization, unitization, force-pooling, etc?

☐ Yes ☐ No If answer is "yes," type of consolidation _____

If answer is "no," list the owners and tract descriptions which have actually been consolidated. (Use reverse side of this form if necessary.) _____

No allowable will be assigned to the well until all interests have been consolidated (by communitization, unitization, forced-pooling, or otherwise) or until a non-standard unit, eliminating such interests, has been approved by the Commission.



CERTIFICATION

I hereby certify that the information contained herein is true and complete to the best of my knowledge and belief.

Bonnie Husband
Name

Bonnie Husband

Position
Production Clerk

Company
7-26-71

Date
Delaware-Apache Corporation

I hereby certify that the well location shown on this plat was plotted from field notes of actual surveys made by me or under my supervision, and that the same is true and correct to the best of my knowledge and belief.

Date Surveyed
7-22-1971

Registered Professional Engineer and/or Land Surveyor

John W. West
Certificate No.

676

RECEIVED

AUG 3 1971

OIL CONSERVATION COMM.
HOBBS, N. M.