

UNITED STATES
DEPARTMENT OF THE INTERIOR
GEOLOGICAL SURVEY30-025-23975
5. LEASE DESIGNATION AND SERIAL NO.

NM-0103893

6. IF INDIAN, ALLOTTEE OR TRIBE NAME

7. UNIT AGREEMENT NAME

8. FARM OR LEASE NAME

Brown 93

9. WELL NO.

1

10. FIELD AND POOL, OR WILDCAT

Sawyer San Andres Gas

11. SEC., T., R., M., OR BLK.
AND SURVEY OR AREA

Sec. 24, T-9-S, R-37-E

12. COUNTY OR PARISH 13. STATE

Lea

New Mexico

APPLICATION FOR PERMIT TO DRILL, DEEPEN, OR PLUG BACK

1a. TYPE OF WORK

DRILL ☒DEEPEN ☐PLUG BACK ☐

b. TYPE OF WELL

OIL
WELL ☒GAS
WELL ☒

OTHER

SINGLE
ZONE ☐MULTIPLE
ZONE ☐

2. NAME OF OPERATOR

Flag-Redfern Oil Company

3. ADDRESS OF OPERATOR

P. O. Box 23, Midland, Texas 79701

4. LOCATION OF WELL (Report location clearly and in accordance with any State requirements.)

At surface

1980' from West Line, 660' From North Line of

Section 24, T-9-S, R-37-E, Lea County, New Mexico

At proposed prod. zone

Same

14. DISTANCE IN MILES AND DIRECTION FROM NEAREST TOWN OR POST OFFICE*

15 Miles East of Crossroads, New Mexico

10. DISTANCE FROM PROPOSED*

LOCATION TO NEAREST
PROPERTY OR LEASE LINE, FT.
(Also to nearest drlg. unit line, if any)

660'

16. NO. OF ACRES IN LEASE

40

17. NO. OF ACRES ASSIGNED
TO THIS WELL

40

18. DISTANCE FROM PROPOSED LOCATION*
TO NEAREST WELL, DRILLING, COMPLETED,
OR APPLIED FOR, ON THIS LEASE, FT.

None

19. PROPOSED DEPTH

5100

20. ROTARY OR CABLE TOOLS

Rotary

21. ELEVATIONS (Show whether DF, RT, GR, etc.)

3970 Gr.

22. APPROX. DATE WORK WILL START*

December 4, 1971

23.

PROPOSED CASING AND CEMENTING PROGRAM

SIZE OF HOLE	SIZE OF CASING	WEIGHT PER FOOT	SETTING DEPTH	QUANTITY OF CEMENT
12 1/4"	8 5/8"	24	400	275 Sx. (Circulate)
7 7/8"	4 1/2"	9.5	5100	250 Sx.

Drill 12 1/4" hole from surface to approximately 400' - Run and cement 8 5/8" casing circulating cement back to surface. Drill 7 7/8" hole to approximately 5100'. Run open hole well logs. Run 4 1/2" O.D. 9.5#/ft. production casing. Cement with 250 sacks Incor, 10% salt, 2% gel. WOC. Run correlation log. Perforate San Andres. Treat with approximately 10,000 gallons acid. Swab to test. Potential well.

IN ABOVE SPACE DESCRIBE PROPOSED PROGRAM: If proposal is to deepen or plug back, give data on present productive zone and proposed new productive zone. If proposal is to drill or deepen directionally, give pertinent data on subsurface locations and measured and true vertical depths. Give blowout preventer program, if any.

24.

SIGNED

Byron H. Greaves

TITLE

Production Manager

DATE November 26, 1971

(This space for Federal or State office use)

PERMIT NO.

APPROVAL DATE

APPROVED BY

TITLE

CONDITIONS OF APPROVAL, IF ANY:

APPROVED
DEC 3 1971ARTHUR R. BROWN
DISTRICT ENGINEER

*See Instructions On Reverse Side

NEW MEXICO OIL CONSERVATION COMMISSION
WELL LOCATION AND ACREAGE DEDICATION PLAT

Form C-102
Supersedes C-128
Effective 1-1-65

All distances must be from the outer boundaries of the Section.

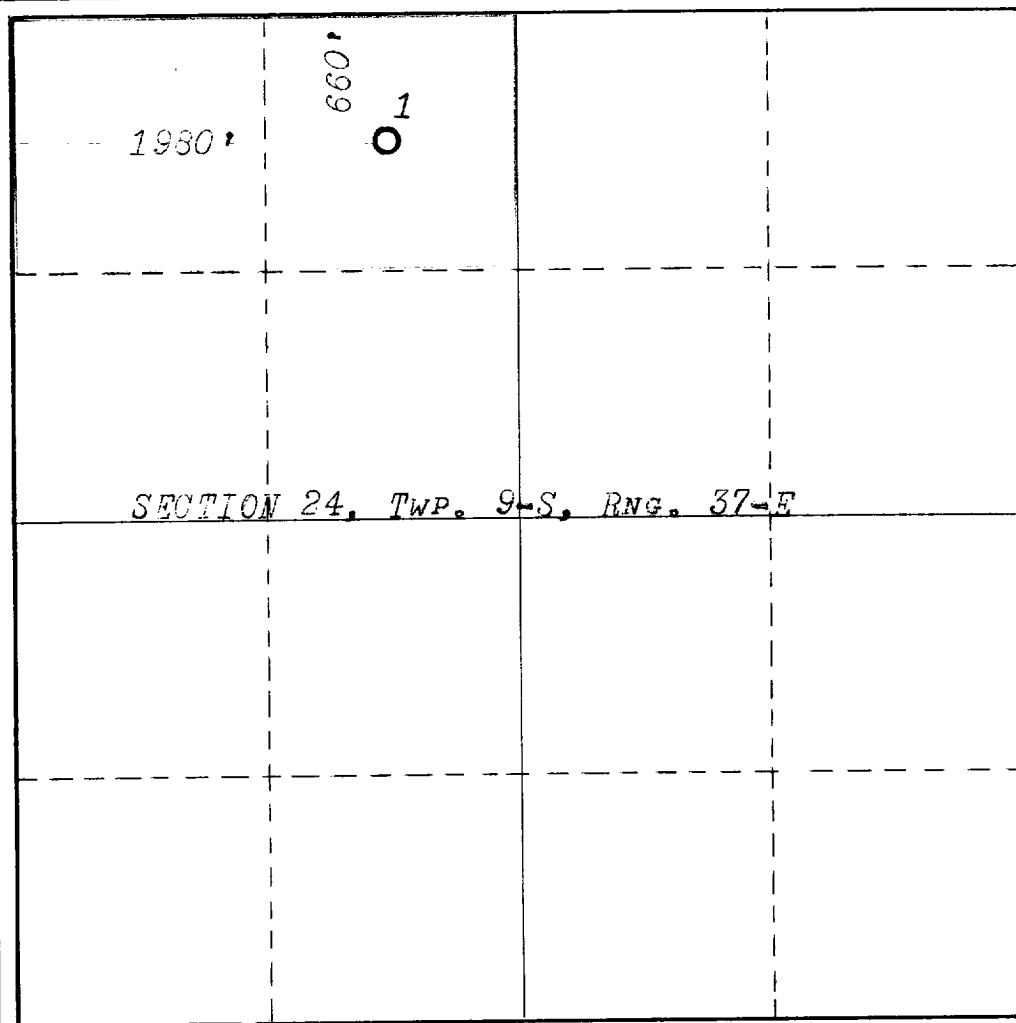
Operator Flag-Redfern Oil Company			Lease Brown "93"		Well No. 1
Unit Letter C	Section 24	Township 9-S	Range 37-E	County Lea	
Actual Footage Location of Well: 1980 feet from the West line and 660 feet from the North line					
Ground Level Elev. 3970	Producing Formation San Andres		Pool Sawyer UNDESIGNATED San Andres	Dedicated Acreage: 40 Acres	

1. Outline the acreage dedicated to the subject well by colored pencil or hachure marks on the plat below.
2. If more than one lease is dedicated to the well, outline each and identify the ownership thereof (both as to working interest and royalty).
3. If more than one lease of different ownership is dedicated to the well, have the interests of all owners been consolidated by communitization, unitization, force-pooling, etc?

☐ Yes ☐ No If answer is "yes," type of consolidation _____

If answer is "no," list the owners and tract descriptions which have actually been consolidated. (Use reverse side of this form if necessary.) _____

No allowable will be assigned to the well until all interests have been consolidated (by communitization, unitization, forced-pooling, or otherwise) or until a non-standard unit, eliminating such interests, has been approved by the Commission.



CERTIFICATION

I hereby certify that the information contained herein is true and complete to the best of my knowledge and belief.

Name
Byron H. Greaves
Position **Byron H. Greaves**
Production Manager
Company
Flag-Redfern Oil Company
Date
November 26, 1971

I hereby certify that the well location shown on this plat was plotted from field notes of actual surveys made by me or under my supervision, and that the same is true and correct to the best of my knowledge and belief.

Nov. 26, 1971
Date Surveyed

Registered Professional Engineer
and/or Land Surveyor
Joseph W. Luchow
Certificate No.
754

0 330 660 990 1320 1650 1980 2310 2640 2000 1500 1000 500