

NEW MEXICO OIL CONSERVATION COMMISSION
WELL LOCATION AND ACREAGE DEDICATION PLAT

Form C-102
Supersedes C-128
Effective 1-1-65

All distances must be from the outer boundaries of the Section.

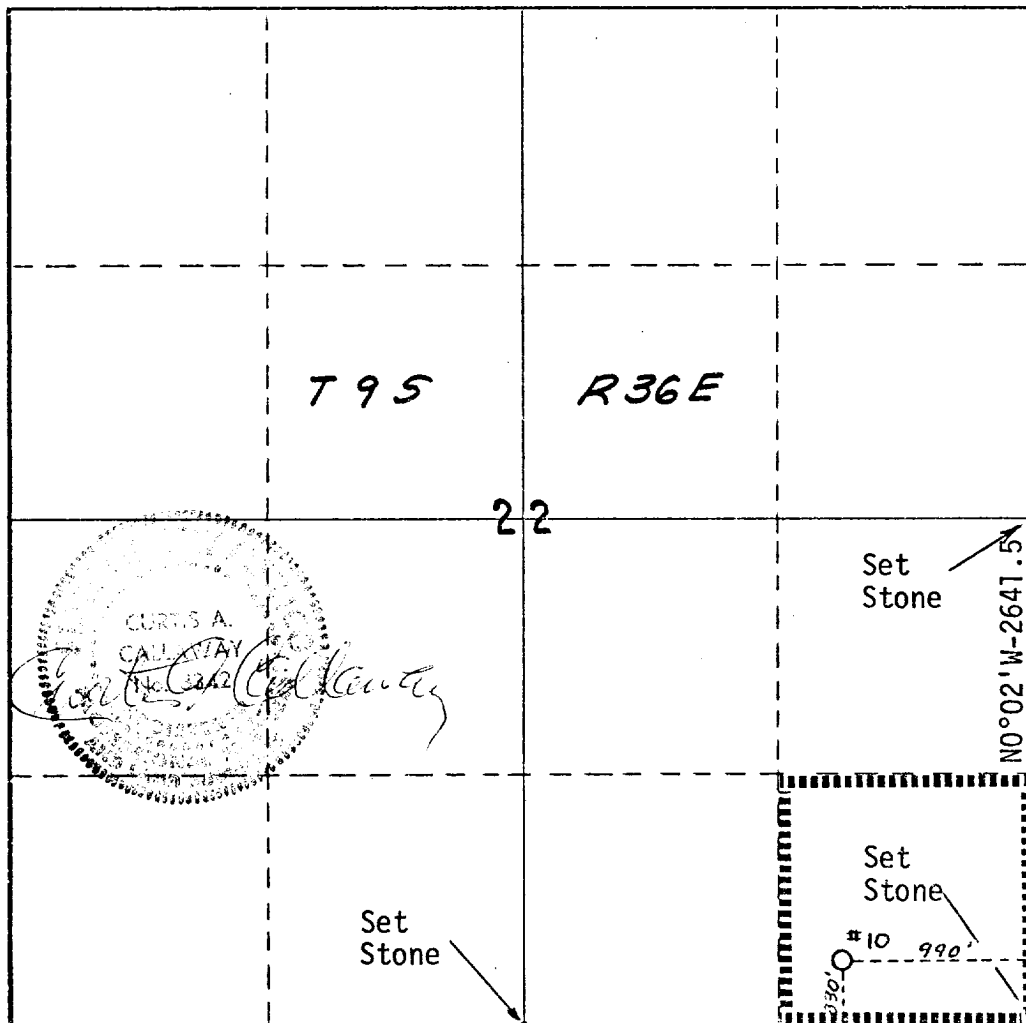
| | | | | | |
|--|--|------------------------|----------------------------------|----------------------|---------------------------------------|
| Operator Mobil Oil Corporation | | | Lease Santa Fe Pacific | | Well No. 10 |
| Unit Letter P | Section 22 | Township 9-S | Range 36-E | County Lea | |
| Actual Footage Location of Well: 330 feet from the South line and 990 feet from the East line | | | | | |
| Ground Level Elev. 4034 | Producing Formation Devonian | | Pool Crossroads | | Dedicated Acreage: 40 Acres |

1. Outline the acreage dedicated to the subject well by colored pencil or hachure marks on the plat below.
2. If more than one lease is dedicated to the well, outline each and identify the ownership thereof (both as to working interest and royalty).
3. If more than one lease of different ownership is dedicated to the well, have the interests of all owners been consolidated by communitization, unitization, force-pooling, etc?

☐ Yes ☐ No If answer is "yes," type of consolidation _____

If answer is "no," list the owners and tract descriptions which have actually been consolidated. (Use reverse side of this form if necessary.) _____

No allowable will be assigned to the well until all interests have been consolidated (by communitization, unitization, forced-pooling, or otherwise) or until a non-standard unit, eliminating such interests, has been approved by the Commission.



CERTIFICATION

I hereby certify that the information contained herein is true and complete to the best of my knowledge and belief.

A. D. Bond
Name
A. D. Bond
Position
Proration Staff Assistant
Company
Mobil Oil Corporation
Date
July 21, 1972

I hereby certify that the well location shown on this plat was plotted from field notes of actual surveys made by me or under my supervision, and that the same is true and correct to the best of my knowledge and belief.

Date Surveyed
July 19, 1972
Registered Professional Engineer and/or Land Surveyor
Curtis A. Callaway
Curtis A. Callaway
Certificate No.
2242



RECEIVED

JUL 10 1972

U.S. DEPARTMENT OF JUSTICE
FEDERAL BUREAU OF INVESTIGATION
WASHINGTON, D.C.