

NO. OF COPIES RECEIVED	
DISTRIBUTION	
SANTA FE	
FILE	
U.S.G.S.	
LAND OFFICE	
OPERATOR	

NEW MEXICO OIL CONSERVATION COMMISSION

Form C-101
Revised 1-1-65

5A. Indicate Type of Lease	
STATE <input type="checkbox"/>	FEE <input checked="" type="checkbox"/>
5. State Oil & Gas Lease No.	

APPLICATION FOR PERMIT TO DRILL, DEEPEN, OR PLUG BACK

1a. Type of Work		7. Unit Agreement Name	
b. Type of Well OIL WELL <input checked="" type="checkbox"/> GAS WELL <input type="checkbox"/> OTHER <input type="checkbox"/>		8. Farm or Lease Name U. D. Sawyer	
2. Name of Operator Sun Oil Company		9. Well No. 9	
3. Address of Operator P. O. Box 1861 - Midland, Texas 79701		10. Field and Pool, or Wildcat Crossroads Siluro Dev.	
4. Location of Well UNIT LETTER H LOCATED 1980 FEET FROM THE North LINE AND 990 FEET FROM THE East LINE OF SEC. 27 TWP. 9S RGE. 36E NMPM		12. County Lea	
19. Proposed Depth 12,200		19A. Formation Devonian	
20. Rotary or C.T. Rotary		21. Elevations (Show whether DF, RT, etc.) GR 4029'	
21A. Kind & Status Plug. Bond Blanket		21B. Drilling Contractor Noble Drilling Co.	
22. Approx. Date Work will start 9-4-72			

PROPOSED CASING AND CEMENT PROGRAM

SIZE OF HOLE	SIZE OF CASING	WEIGHT PER FOOT	SETTING DEPTH	SACKS OF CEMENT	EST. TOP
17-1/2"	13-3/8"	48#	260'	275	Surf. 'Circ.'
12-1/4"	9-5/8"	36#	4250'	1440	Surf. 'Circ.'
8-3/4"	7"	23# & 26#	TD	250	Approx. 10,000'

- (1) Set 13-3/8" OD 48# H-40 csg. @ 260'. Circ. cmt. to surf. WOC 18 hrs. Tst. csg. to 600# for 30 min. Guide shoe & 3 B&W flat bow centralizers will be used.
- (2) Set 9-5/8" OD 36# K-55 & H-40 csg. @ 4250. Circ. cmt. to surf. WOC 18 hrs. Tst. csg. to 1000# for 30 min. Use Baker guide shoe & run 10 B&W Kon-Kave centralizers on 60'-90' spac.
- (3) Drill 8-3/4" hole to TD. Run opn. hole GR/N Logs.
- (4) Set 7" OD 23# & 26# N-80 & S-95 csg. @ TD. Cmt. w/sufficient cmt. to fill 2000' above shoe. WOC 36 hrs. Tst. csg. to 1000# for 30 min. Use Baker W-D whirler guide shoe & Model "G" differential fill-up collar. Run 12 B&W Helical centralizers on 60' spac. above shoe.
- (5) Perf Devonian porosity.
- (6) Set packer on 2-7/8" OD 6.5# C-75 tbg. above perfs.
- (7) Acidize perfs. w/750 gals.
- (8) Tst. - Anticipate flowing well.

EXPIRES 11-30-72

IN ABOVE SPACE DESCRIBE PROPOSED PROGRAM: IF PROPOSAL IS TO DEEPEN OR PLUG BACK, GIVE DATA ON PRESENT PRODUCTIVE ZONE AND PROPOSED NEW PRODUCTIVE ZONE. GIVE BLOWOUT PREVENTER PROGRAM, IF ANY.

I hereby certify that the information above is true and complete to the best of my knowledge and belief.

Signed Charles Gray Title Proration Clerk Date 8-28-72

(This space for State Use)

APPROVED BY [Signature] TITLE SUPERVISOR DISTRICT I DATE AUG 31 1972

CONDITIONS OF APPROVAL, IF ANY:

RECEIVED

AUG 31 1972

OIL CONSERVATION COMM.
HOBBS, N. M.

NEW MEXICO OIL CONSERVATION COMMISSION
WELL LOCATION AND ACREAGE DEDICATION PLAT

Form C-102
Supersedes C-128
Effective 1-1-65

All distances must be from the outer boundaries of the Section.

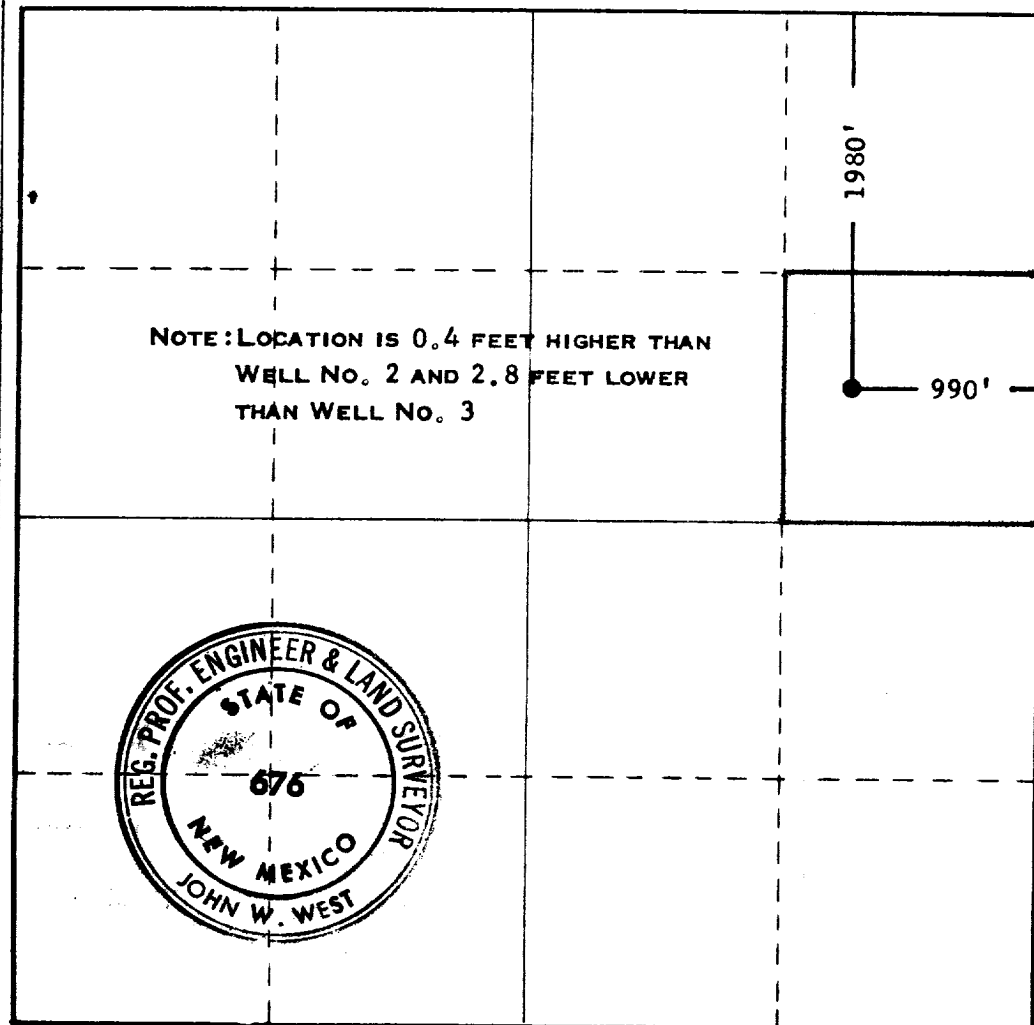
Operator SUN OIL COMPANY			Lease U.D. SAWYER		Well No. 9
Unit Letter H	Section 27	Township 9 SOUTH	Range 36 EAST	County LEA	
Actual Footage Location of Well: 1980 feet from the NORTH line and 990 feet from the EAST line					
Ground Level Elev. 4029	Producing Formation Devonian		Pool Crossroads Siluro Devonian	Dedicated Acreage: 40 Acres	

1. Outline the acreage dedicated to the subject well by colored pencil or hachure marks on the plat below.
2. If more than one lease is dedicated to the well, outline each and identify the ownership thereof (both as to working interest and royalty).
3. If more than one lease of different ownership is dedicated to the well, have the interests of all owners been consolidated by communitization, unitization, force-pooling, etc?

☐ Yes ☐ No If answer is "yes," type of consolidation _____

If answer is "no," list the owners and tract descriptions which have actually been consolidated. (Use reverse side of this form if necessary.) _____

No allowable will be assigned to the well until all interests have been consolidated (by communitization, unitization, forced-pooling, or otherwise) or until a non-standard unit, eliminating such interests, has been approved by the Commission.



CERTIFICATION

I hereby certify that the information contained herein is true and complete to the best of my knowledge and belief.

Name Charles Gray
Position **Proration Clerk**
Company **Sun Oil Company**
Date **August 28, 1972**

I hereby certify that the well location shown on this plat was plotted from field notes of actual surveys made by me or under my supervision, and that the same is true and correct to the best of my knowledge and belief.

Date Surveyed **AUGUST 22, 1972**
Registered Professional Engineer and/or Land Surveyor

John W. West
Certificate No. **676**



173

RECEIVED

AUG 31 1972

OIL CONSERVATION COMM.
HOBBS, N. M.