

UNITED STATES  
DEPARTMENT OF THE INTERIOR  
GEOLOGICAL SURVEY

## APPLICATION FOR PERMIT TO DRILL, DEEPEN, OR PLUG BACK

## 1a. TYPE OF WORK

DRILL ☒DEEPEN ☐PLUG BACK ☐

## b. TYPE OF WELL

OIL  
WELL ☒GAS  
WELL ☐

OTHER

SINGLE  
ZONE ☒MULTIPLE  
ZONE ☐

## 2. NAME OF OPERATOR

John L. Cox

## 3. ADDRESS OF OPERATOR

408 West Wall St., Midland, Texas 79701

## 4. LOCATION OF WELL (Report location clearly and in accordance with any State requirements.)

At surface 1980' FNL & 1980' FWL, Section 27, T-9-S, R-37-E,  
NMPM, Lea County, New Mexico.  
At proposed prod. zone Same as above

## 14. DISTANCE IN MILES AND DIRECTION FROM NEAREST TOWN OR POST OFFICE\*

7 miles East of Crossroads, New Mexico

## 15. DISTANCE FROM PROPOSED\*

LOCATION TO NEAREST  
PROPERTY OR LEASE LINE, FT. 660'  
(Also to nearest drlg. line, if any)

## 16. NO. OF ACRES IN LEASE

80

17. NO. OF ACRES ASSIGNED  
TO THIS WELL

80

## 18. DISTANCE FROM PROPOSED LOCATION\*

TO NEAREST WELL, DRILLING, COMPLETED,  
OR APPLIED FOR, ON THIS LEASE, FT. 1st. well

## 19. PROPOSED DEPTH

5,100'

## 20. ROTARY OR CABLE TOOLS

Rotary

## 21. ELEVATIONS (Show whether DF, RT, GR, etc.)

3967.5' Gr

## 22. APPROX. DATE WORK WILL START\*

By Nov. 9, 1972

## 23. PROPOSED CASING AND CEMENTING PROGRAM

SIZE OF HOLE	SIZE OF CASING	WEIGHT PER FOOT	SETTING DEPTH	QUANTITY OF CEMENT
12-1/4"	8-5/8"	20#	400'	375xx. CIRCULATE
7-7/8"	4-1/2"	9.5#	5,100'	350xx.

8-5/8" to be cemented with 375 sacks Class H cement with 2% Calcium Chloride.  
This is ample cement to circulate to surface.4-1/2" casing to be cemented with 350 sacks of Class C cement, 50-50 pozmix with 2%  
gel, 8# salt/sack and 0.75% CFR2 preceded by 500 gallons mud flushMud Program: Water, Gel & Lime 0-400'  
Native Redbed mud 400'-4,700'  
Low-solids salt gel-starch mud 4700'-TD

IN ABOVE SPACE DESCRIBE PROPOSED PROGRAM: If proposal is to deepen or plug back, give data on present productive zone and proposed new productive zone. If proposal is to drill or deepen directionally, give pertinent data on subsurface locations and measured and true vertical depths. Give blowout preventer program, if any.

## 24.

SIGNED

*Arthur R. Brown*

TITLE

Petroleum Engineer

DATE

9/27/72

(This space for Federal or State office use)

PERMIT NO. \_\_\_\_\_

APPROVED BY \_\_\_\_\_

CONDITIONS OF APPROVAL, IF ANY:

TITLE \_\_\_\_\_

APPROVED  
OCT 25 1972  
ARTHUR R. BROWN  
DISTRICT ENGINEER

\*See Instructions On Reverse Side

OIL CONSERVATION COMM.  
HOBBS, N. M.

OCT 2 1 1972

RECEIVED

**NEW MEXICO OIL CONSERVATION COMMISSION  
WELL LOCATION AND ACREAGE DEDICATION PLAT**

Form C-102  
Supersedes C-128  
Effective 1-1-65

All distances must be from the outer boundaries of the Section

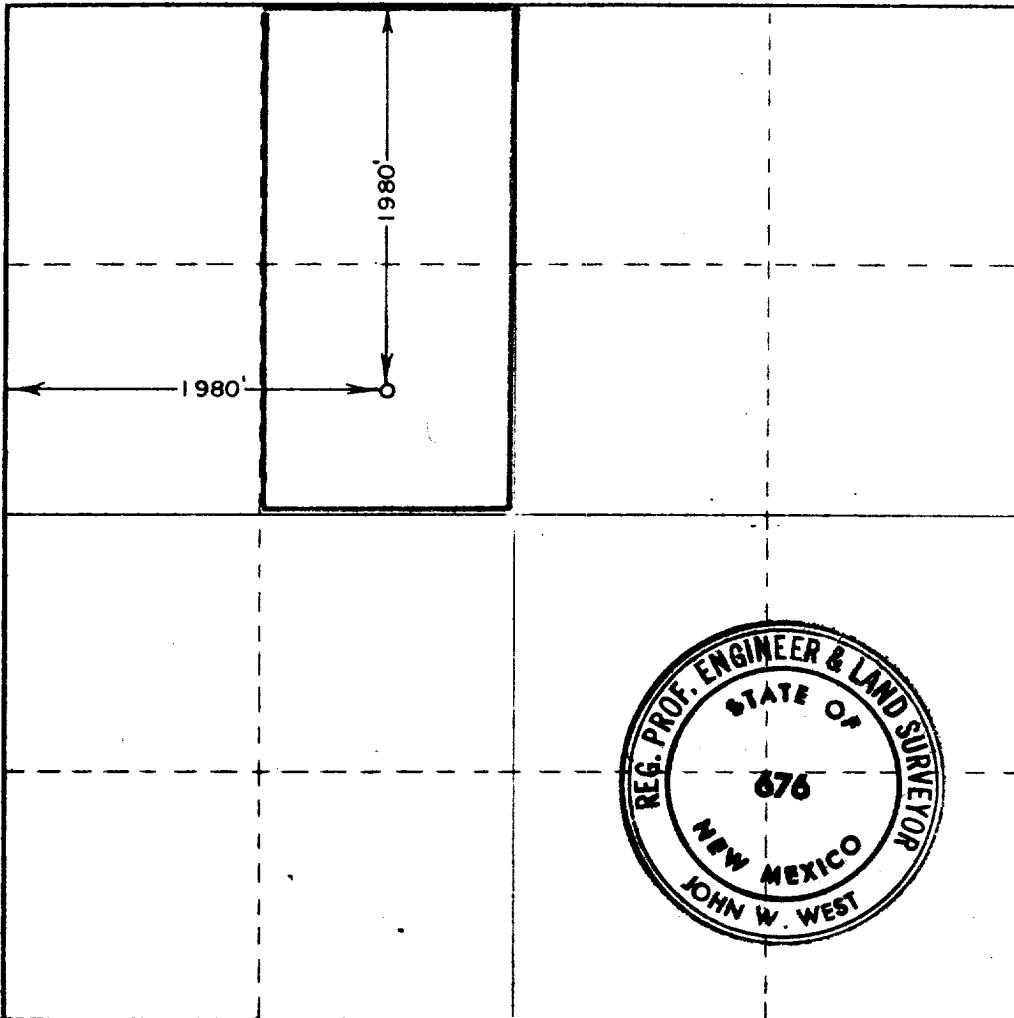
Operator <b>JOHN L. COX</b>			Lease <b>T P</b>		Well No. <b>1</b>
Unit Letter <b>F</b>	Section <b>27</b>	Township <b>9 South</b>	Range <b>37 East</b>	County <b>Lea</b>	
Actual Footage Location of Well:					
<b>1980</b>	feet from the	<b>North</b>	line and	<b>1980</b>	feet from the <b>West</b> line
Ground Level Elev. <b>3967.5</b>	Producing Formation <b>San Andres</b>		Pool <b>Sawyer San Andres West</b>		Dedicated Acreage: <b>80</b> Acres

1. Outline the acreage dedicated to the subject well by colored pencil or hatchure marks on the plat below.
2. If more than one lease is dedicated to the well, outline each and identify the ownership thereof (both as to working interest and royalty).
3. If more than one lease of different ownership is dedicated to the well, have the interests of all owners been consolidated by communitization, unitization, force-pooling, etc?

☐ Yes    ☐ No    If answer is "yes," type of consolidation \_\_\_\_\_

If answer is "no," list the owners and tract descriptions which have actually been consolidated. (Use reverse side of this form if necessary.) \_\_\_\_\_

No allowable will be assigned to the well until all interests have been consolidated (by communitization, unitization, forced-pooling, or otherwise) or until a non-standard unit, eliminating such interests, has been approved by the Commission.



**CERTIFICATION**

*I hereby certify that the information contained herein is true and complete to the best of my knowledge and belief.*

Name *Bill C. [Signature]*

Position

**Agent**

Company

**John L. Cox**

Date

**10/4/72**

*I hereby certify that the well location shown on this plat was plotted from field notes of actual surveys made by me or under my supervision, and that the same is true and correct to the best of my knowledge and belief.*

Date Surveyed

**September 27, 1972**

Registered Professional Engineer and/or Land Surveyor

*John W. West*

Certificate No.

**676**

0 330 660 990 1320 1650 1980 2310 2640 2970 3300 3630 3960 4290 4620 4950 5280 5610 5940 6270 6600 6930 7260 7590 7920 8250 8580 8910 9240 9570 9900

**MEADCO PROPERTIES**

407 WEST WALL STREET  
MIDLAND, TEXAS 79701

682-5671

September 27, 1972

United States Geological Survey  
P. O. Box 1157  
Hobbs, New Mexico 88240

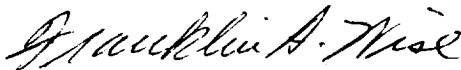
Dear Sirs:

Re: Application to drill for John L. Cox T.P. #1  
well in the West Sawyer (San Andres) Field, Section 27, T-9-S,  
R-37-E, Lea County, New Mexico, the following supplemental  
information is submitted:

1. Water for drilling to be hauled in by commercial  
water hauler.
2. Waste disposal: Junk iron and trash to be hauled  
to nearest trash dump for disposal.
3. Produced brine to be hauled to disposal well by  
Western Oil Transport.
4. Casinghead gas to be sold for best contract price.

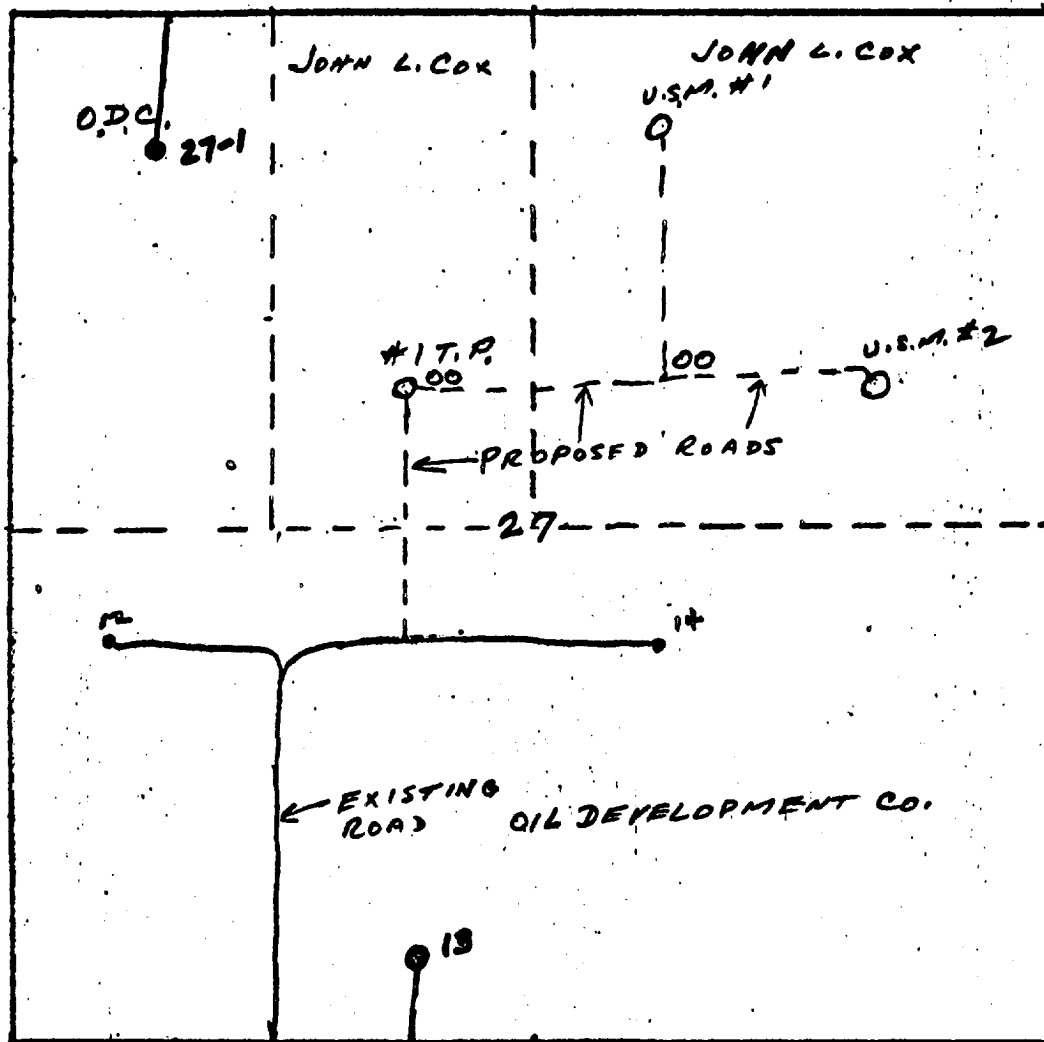
Yours truly, .

MEADCO PROPERTIES

  
Franklin A. Wise  
Petroleum Engineer

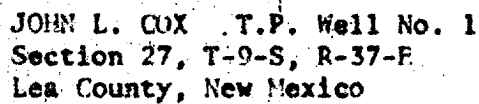
FAW/mr

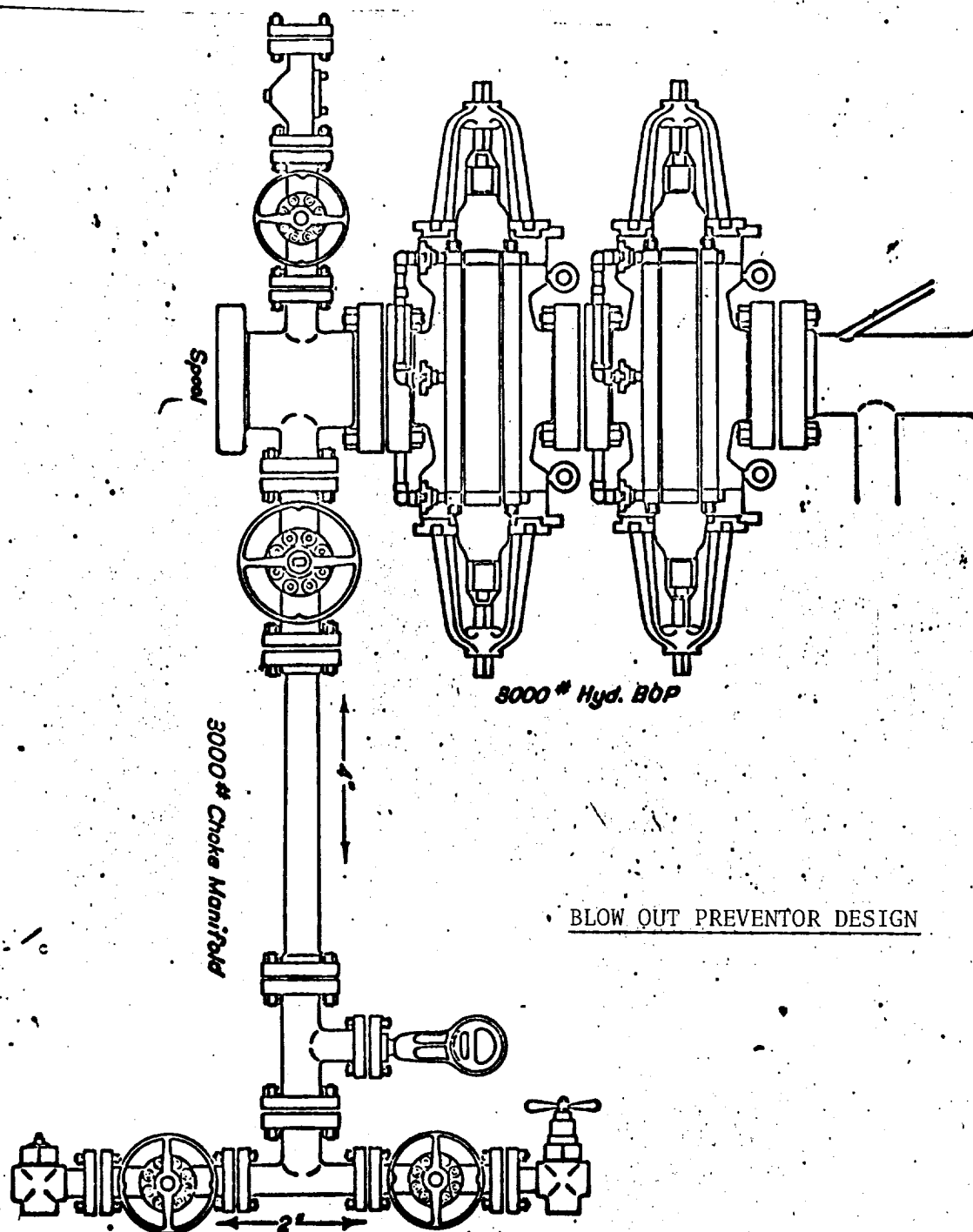
JOHN L. COX  
PLAN FOR SURFACE DEVELOPMENT FOR LEASES  
Section 27, T-9-S, R-37-E, Lea County, New Mexico



00 - PROPOSED TANK BATTERY  
FLOW LINES TO BE LAID  
ALONG ROADS.  
ALL ROADS TO BE 12' WIDE

LOCATION, RIG-UP, &  
PIT DIAGRAM RIG # 3





JOHN L. COX T.P. Well No. 1  
 Section 27, T-9-S, R-37-E  
 Lea County, New Mexico