

NO. OF COPIES RECEIVED	
DISTRIBUTION	
SANTA FE	
FILE	
U.S.G.S.	
LAND OFFICE	
OPERATOR	

# NEW MEXICO OIL CONSERVATION COMMISSION

Form C-101

Revised 1-1-65

5A. Indicate Type of Lease  
STATE ☐ FEE ☒  
5. State Oil & Gas Lease No.

## APPLICATION FOR PERMIT TO DRILL, DEEPEN, OR PLUG BACK

1a. Type of Work DRILL <input checked="" type="checkbox"/> DEEPEN <input type="checkbox"/> PLUG BACK <input type="checkbox"/>		7. Unit Agreement Name
b. Type of Well OIL WELL <input checked="" type="checkbox"/> GAS WELL <input type="checkbox"/> OTHER <input type="checkbox"/> SINGLE ZONE <input checked="" type="checkbox"/> MULTIPLE ZONE <input type="checkbox"/>		8. Farm or Lease Name Santa Fe Pacific
2. Name of Operator Mobil Oil Corporation		9. Well No. 12
3. Address of Operator P. O. Box 633, Midland, Texas 79701		10. Field and Pool, or Wildcat Crossroads
4. Location of Well UNIT LETTER L LOCATED 330 FEET FROM THE West LINE AND 2310 FEET FROM THE South LINE OF SEC. 26 T.4P. 9S R.6E. 36E NMPM		12. County Lea
13. Proposed Depth 12,200'		19A. Formation Devonian
20. Rotary or C.T. Rotary		
21. Elevations (Show whether DT, RT, etc.) 4029 - Ground	21A. Kind & Status Plug. Bond On File	22. Approx. Date Work will start November 8, 1972

23.

## PROPOSED CASING AND CEMENT PROGRAM

SIZE OF HOLE	SIZE OF CASING	WEIGHT PER FOOT	SETTING DEPTH	SACKS OF CEMENT	EST. TOP
17-1/2"	13-3/8"	48#	350	Circulate	Surface
12-1/4"	9-5/8"	36#	5000	Circulate	Surface
8-3/4"	7"	23#	4800'-11300'	Circulate	4800'
	7"	26#	11300'-12100'	Circulate	11300'

APPROVAL VALID  
FOR 90 DAYS UNLESS  
DRILLING COMMENCED,  
EXPIRES Feb. 4, 1973

IN ABOVE SPACE DESCRIBE PROPOSED PROGRAM: IF PROPOSAL IS TO DEEPEN OR PLUG BACK, GIVE DATA ON PRESENT PRODUCTIVE ZONE AND PROPOSED NEW PRODUCTIVE ZONE. GIVE BLOWOUT PREVENTER PROGRAM, IF ANY.

I hereby certify that the information above is true and complete to the best of my knowledge and belief.

Signed A. D. Bond A. D. Bond Title Proration Staff Assistant Date November 2, 1972

(This space for State Use)

APPROVED BY John Runyan TITLE Geologist DATE NOV 6 1972

RECEIVED

APR 16 1972

OIL CONSERVATION COMM.  
HOBBS, N. M.

NEW MEXICO OIL CONSERVATION COMMISSION  
WELL LOCATION AND ACREAGE DEDICATION PLAT

Form C-102  
Supersedes C-128  
Effective 1-1-65

All distances must be from the outer boundaries of the Section.

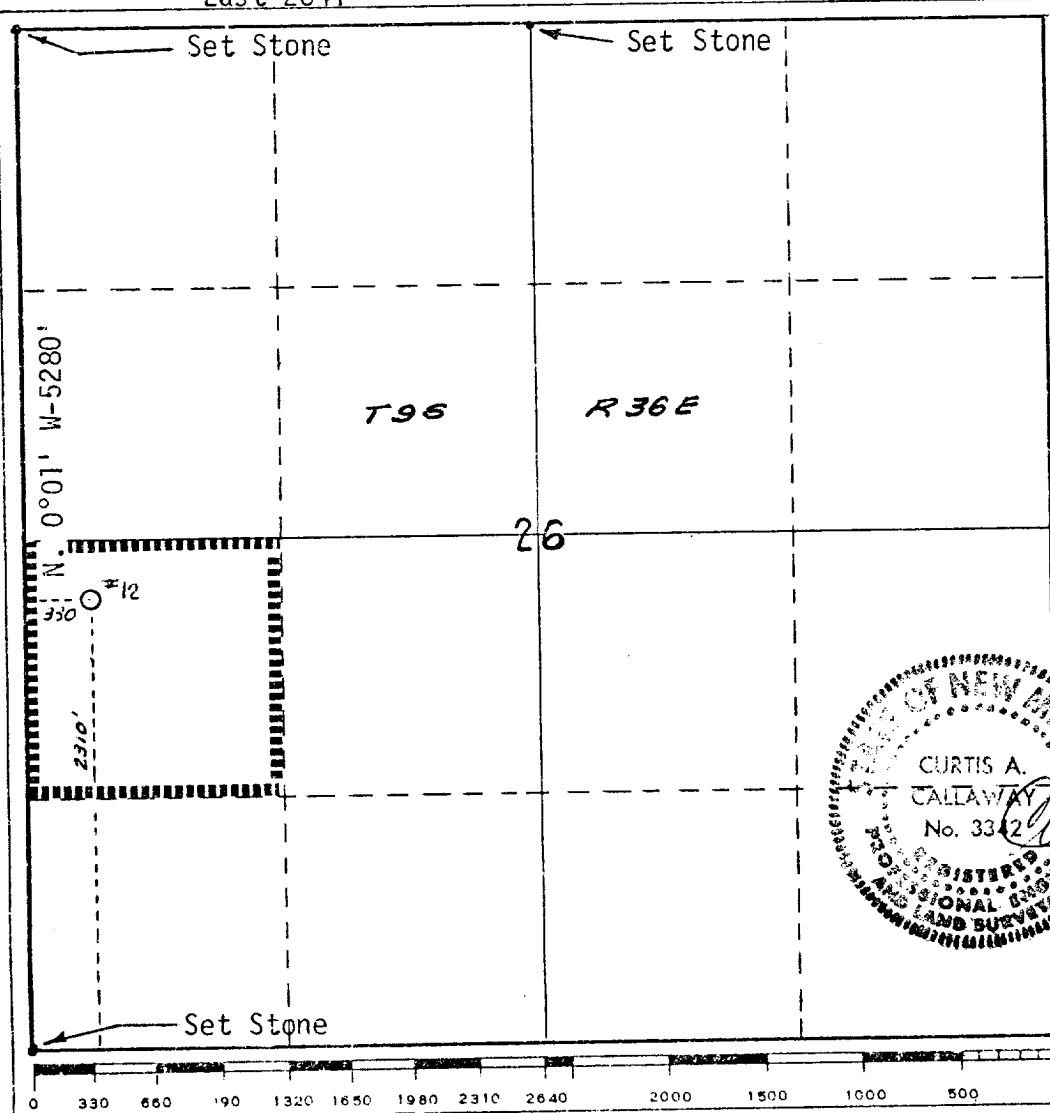
Operator <b>Mobil Oil Corporation</b>			Lease <b>Santa Fe Pacific</b>		Well No. <b>12</b>
Unit Letter <b>L</b>	Section <b>26</b>	Township <b>9S</b>	Range <b>36E</b>	County <b>Lea</b>	
Actual Footage Location of Well: <b>330</b> feet from the <b>West</b> line and <b>2310</b> feet from the <b>South</b> line					
Ground Level Elev. <b>4029</b>	Producing Formation <b>Devonian</b>		Pool <b>Crossroads</b>		Dedicated Acreage: <b>40</b> Acres

1. Outline the acreage dedicated to the subject well by colored pencil or hachure marks on the plat below.
2. If more than one lease is dedicated to the well, outline each and identify the ownership thereof (both as to working interest and royalty).
3. If more than one lease of different ownership is dedicated to the well, have the interests of all owners been consolidated by communitization, unitization, force-pooling, etc?

☐ Yes ☐ No If answer is "yes," type of consolidation \_\_\_\_\_

If answer is "no," list the owners and tract descriptions which have actually been consolidated. (Use reverse side of this form if necessary.) \_\_\_\_\_

No allowable will be assigned to the well until all interests have been consolidated (by communitization, unitization, forced-pooling, or otherwise) or until a non-standard unit, eliminating such interests, has been approved by the Commission. **East 2641'**



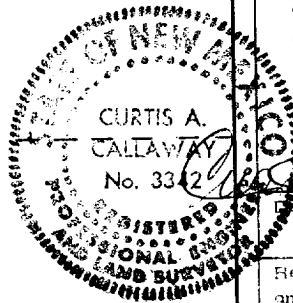
CERTIFICATION

I hereby certify that the information contained herein is true and complete to the best of my knowledge and belief.

*A. D. Bond*  
Name  
**A. D. Bond**  
Position  
**Proration Staff Assistant**  
Company  
**Mobil Oil Corporation**  
Date  
**November 2, 1972**

I hereby certify that the well location shown on this plat was plotted from field notes of actual surveys made by me or under my supervision, and that the same is true and correct to the best of my knowledge and belief.

*Curtis A. Callaway*  
Date Surveyed  
**November 2, 1972**  
Registered Professional Engineer and/or Land Surveyor  
**Curtis A. Callaway**  
Certificate No.  
**3342**



RECEIVED

1967

OIL CONSERVATION COMM.  
HOUSTON, N. M.

FILE