

UNITED STATES
DEPARTMENT OF THE INTERIOR
GEOLOGICAL SURVEY

APPLICATION FOR PERMIT TO DRILL, DEEPEN, OR PLUG BACK

1a. TYPE OF WORK

DRILL ☒

DEEPEN ☐

PLUG BACK ☐

b. TYPE OF WELL

OIL
WELL ☒

GAS
WELL ☐

OTHER

SINGLE
ZONE ☒

MULTIPLE
ZONE ☐

2. NAME OF OPERATOR

JOHN L. COX

3. ADDRESS OF OPERATOR

408 West Wall, Midland, Texas 79701

4. LOCATION OF WELL (Report location clearly and in accordance with any State requirements.*)

At surface

660' NL, 1980' EL

At proposed prod. zone

14. DISTANCE IN MILES AND DIRECTION FROM NEAREST TOWN OR POST OFFICE*

7 Miles East, Crossroads, New Mexico

15. DISTANCE FROM PROPOSED*

LOCATION TO NEAREST
PROPERTY OR LEASE LINE, FT.
(Also to nearest drlg. unit line, if any)

660'

16. NO. OF ACRES IN LEASE

160

17. NO. OF ACRES ASSIGNED
TO THIS WELL

80

18. DISTANCE FROM PROPOSED LOCATION*
TO NEAREST WELL, DRILLING, COMPLETED,
OR APPLIED FOR, ON THIS LEASE, FT.

1st Well

19. PROPOSED DEPTH

5100'

20. ROTARY OR CABLE TOOLS

Rotary

21. ELEVATIONS (Show whether DF, RT, GR, etc.)

3965.9 GR

22. APPROX. DATE WORK WILL START*

December 15, 1972

23. PROPOSED CASING AND CEMENTING PROGRAM

SIZE OF HOLE	SIZE OF CASING	WEIGHT PER FOOT	SETTING DEPTH	QUANTITY OF CEMENT
12 1/4"	8 5/8"	20#	400'	375 Sx. Circulated
7 7/8"	4 1/2"	9.5#	5100'	350 Sx.

8 5/8" casing to be cemented with 375 sx. Class H cement with 2% Calcium Chloride. This is ample cement to circulate to surface.

4 1/2" casing to be cemented with 350 sx. of Class C cement, 50-50 pozmix with 2% gel, 8# salt/sack and 0.75% CFR2 preceded by 500 gallon mud flush.

Mud Program: Water, Gel, & Lime 0-400'
Native Redbed mud 400'-4700'
Low-solids salt gel-starch mud 4700'-TD

IN ABOVE SPACE DESCRIBE PROPOSED PROGRAM: If proposal is to deepen or plug back, give data on present productive zone and proposed new productive zone. If proposal is to drill or deepen directionally, give pertinent data on subsurface locations and measured and true vertical depths. Give blowout preventer program, if any.

24. SIGNED Merita Hightland TITLE Production Clerk DATE December 5, 1972

(This space for Federal or State office use)

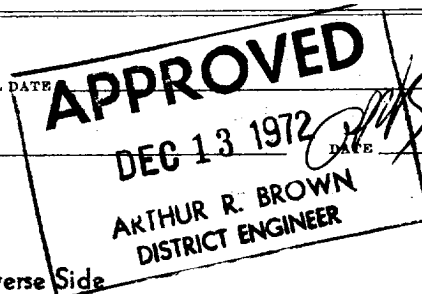
PERMIT NO.

APPROVAL DATE

APPROVED BY

TITLE

CONDITIONS OF APPROVAL, IF ANY:



*See Instructions On Reverse Side

RECEIVED

SEP 10 1972

**OIL CONSERVATION COMM.
HOBBS, N. M.**

NEW MEXICO OIL CONSERVATION COMMISSION
WELL LOCATION AND ACREAGE DEDICATION PLAT

Form O-132
Supersedes O-128
Effective 1-1-65

All distances must be from the outer boundaries of the Section.

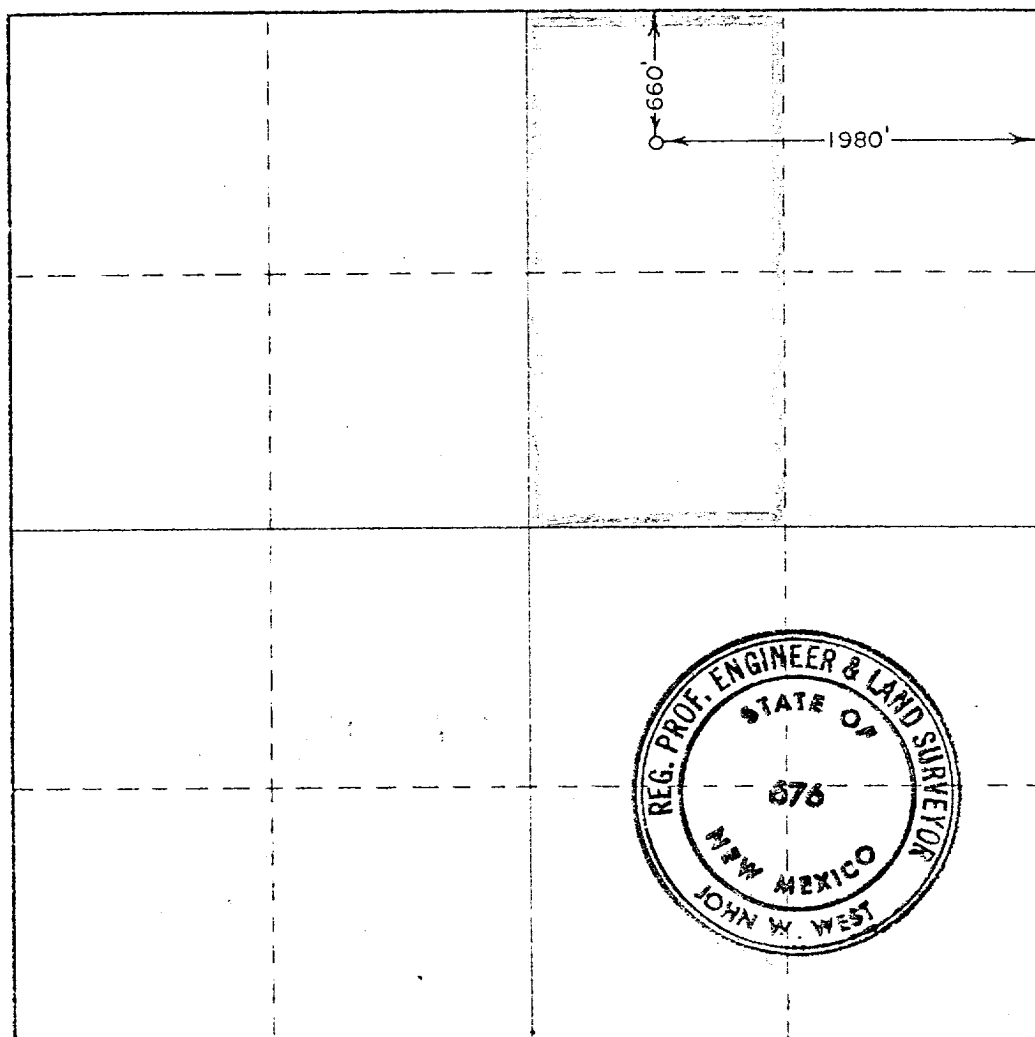
Operator JOHN L. COX		Lease U S M		Well No. 1
Tract Letter B	Section 27	Township 9 South	Range 37 East	County Lea
Actual Well Location of Well: 660 feet from the North line and 1980 feet from the East line				
Ground Level Elev. 3965.9	Producing Formation San Andres	Pool UNDESIGNATED Sawyer San Andres West	Dedicated Acreage 80 Acres	

1. Outline the acreage dedicated to the subject well by colored pencil or hachure marks on the plat below.
2. If more than one lease is dedicated to the well, outline each and identify the ownership thereof (both as to working interest and royalty).
3. If more than one lease of different ownership is dedicated to the well, have the interests of all owners been consolidated by communitization, unitization, force-pooling, etc?

☐ Yes ☐ No If answer is "yes," type of consolidation _____

If answer is "no," list the owners and tract descriptions which have actually been consolidated. (Use reverse side of this form if necessary.) _____

No allowable will be assigned to the well until all interests have been consolidated (by communitization, unitization, forced-pooling, or otherwise) or until a non-standard unit, eliminating such interests, has been approved by the Commission.



CERTIFICATION

I hereby certify that the information contained herein is true and complete to the best of my knowledge and belief.

Monte H. H. H.
Name

Production Clerk

Position

JOHN L. COX

Company

December 5, 1972

Date

I hereby certify that the well location shown on this plat was plotted from field notes of actual surveys made by me or under my supervision, and that the same is true and correct to the best of my knowledge and belief.

Date Surveyed

September 28, 1972

Registered Professional Engineer
and/or Land Surveyor

John W. West
Certificate No.

676

0 330 660 990 1320 1650 1980 2310 2640 2970 3300 3630 3960 4290 4620 4950 5280 5610 5940 6270 6600

RECEIVED

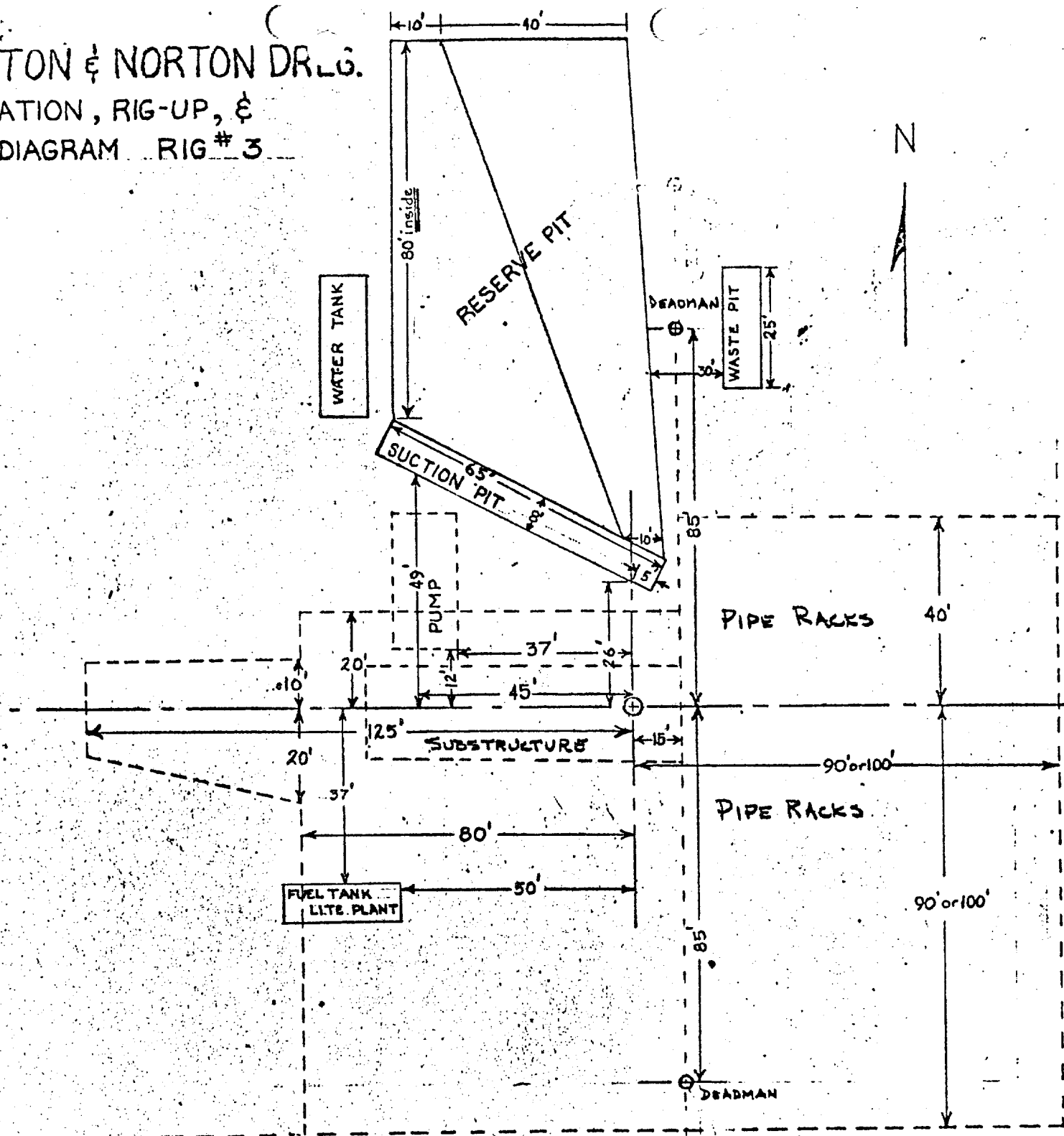
L 10 1972

**OIL CONSERVATION COMM.
HOBBS, N. M.**

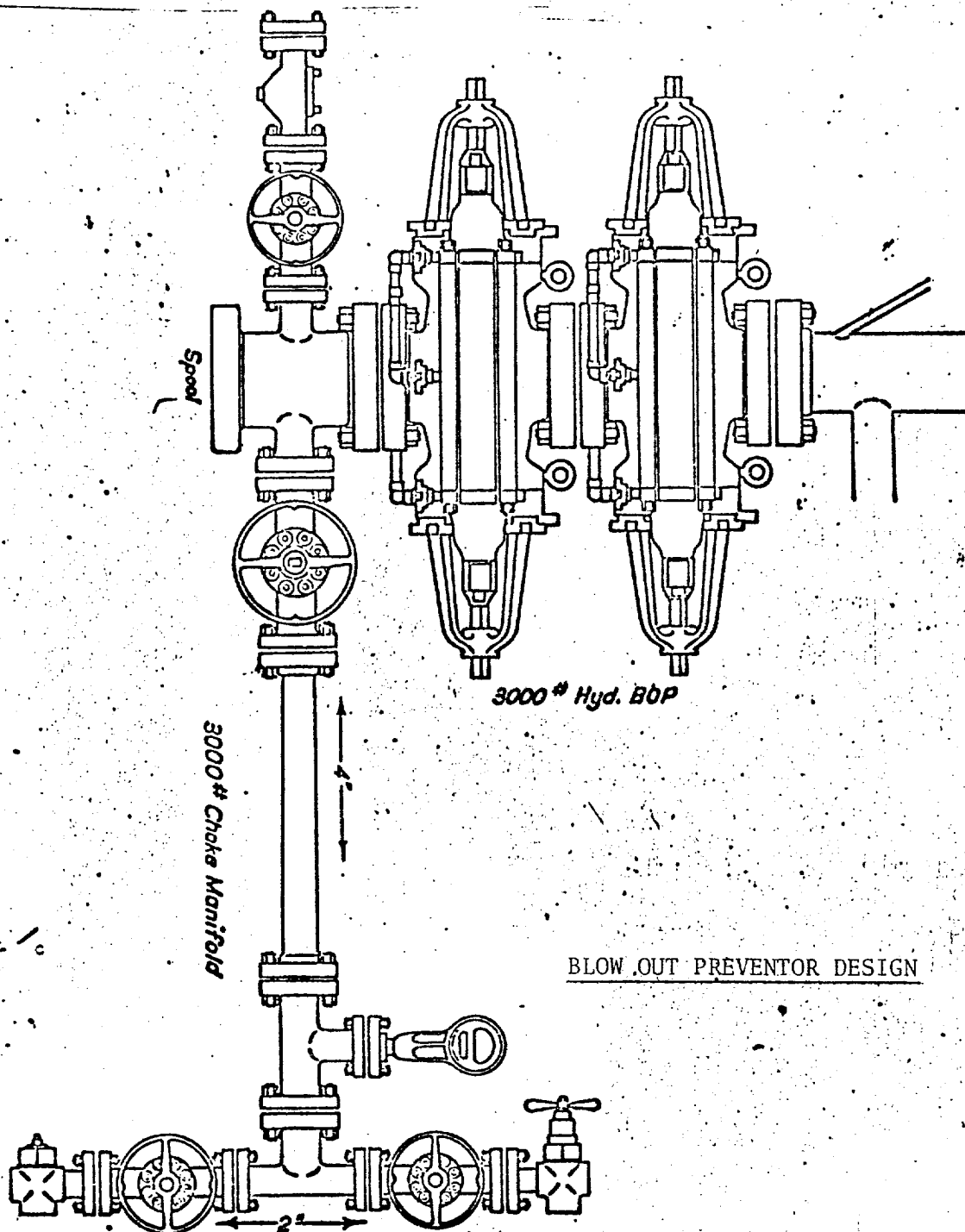
SITTON & NORTON DRUG.

LOCATION, RIG-UP, &

PIT DIAGRAM RIG # 3



JOHN L. COX - U. S. M. #1
Section 27, T-9-S, R-37-E
Lea County, New Mexico



BLOW OUT PREVENTOR DESIGN

JOHN L. COX - U. S. M. #1
 Section 27, T-9-S, R-37-E
 Lea County, New Mexico

O.D.C.

JOHN L. COX

JOHN L. COX

U.S.M.#1

8

Existing Roads

T.P.#1

Proposed Roads

U.S.M.#2

OIL DEVELOPMENT COMPANY

JOHN L. COX - U.S.M. #1
Section 27, T-9-S, R-37-E
Lea County, New Mexico