

COUNTY LEA FIELD Sawyer, W. STAT NM
 OPR MEADCO PROPERTIES, LTD. API 30-025-24340
 NO 1 LEASE Arco SERIAL
Sec 26, T-9-S, R-37-E MAP
554' FNL, 554' FWL of Sec CO-ORD
 SPD 2-16-73 CMP 3-4-73 L & S
 CSG 8 5/8" at 438' w/325 sx
4 1/2" at 5100' w/250 sx
 FORMATION CLASS DATUM ELEV FORMATION DATUM
 TD 5100' PBD
 IP (San Andres) Peris 4998-5022' F 80 BOPD + 10 BW. Pot
 based on 24 hr test. GOR 260; Grav NR
 CONTR Sitton & Norton PD 5100' TYPE RE
 DPRS ELEV 3973' GI.

FR 1-1-73
 (San Andres)
 Drig 3932' anhy & 1m
 TD 5100'; WOC
 TD 5100'; TO Pmp
 Perf 4998-5022'
 Acid (4998-5022') 7000 gals
 Ppd 74 BO + 10 BW in 24 hrs (4998-5022')
 TD 5100'; WO OCC Pot
 Ppd 80 BO + 10 BW in 24 hrs, GOR 260
 TD 5100'; COMPLETE
 COMPLETION REPORTED

2-20-73
 2-26-73
 3-6-73
 3-13-73
 3-19-73
 3-24-73

NEW MEXICO OIL CONSERVATION COMMISSION
WELL LOCATION AND ACREAGE DEDICATION PLAT

Form C-102
Supersedes C-128
Effective 1-1-65

All distances must be from the outer boundaries of the Section

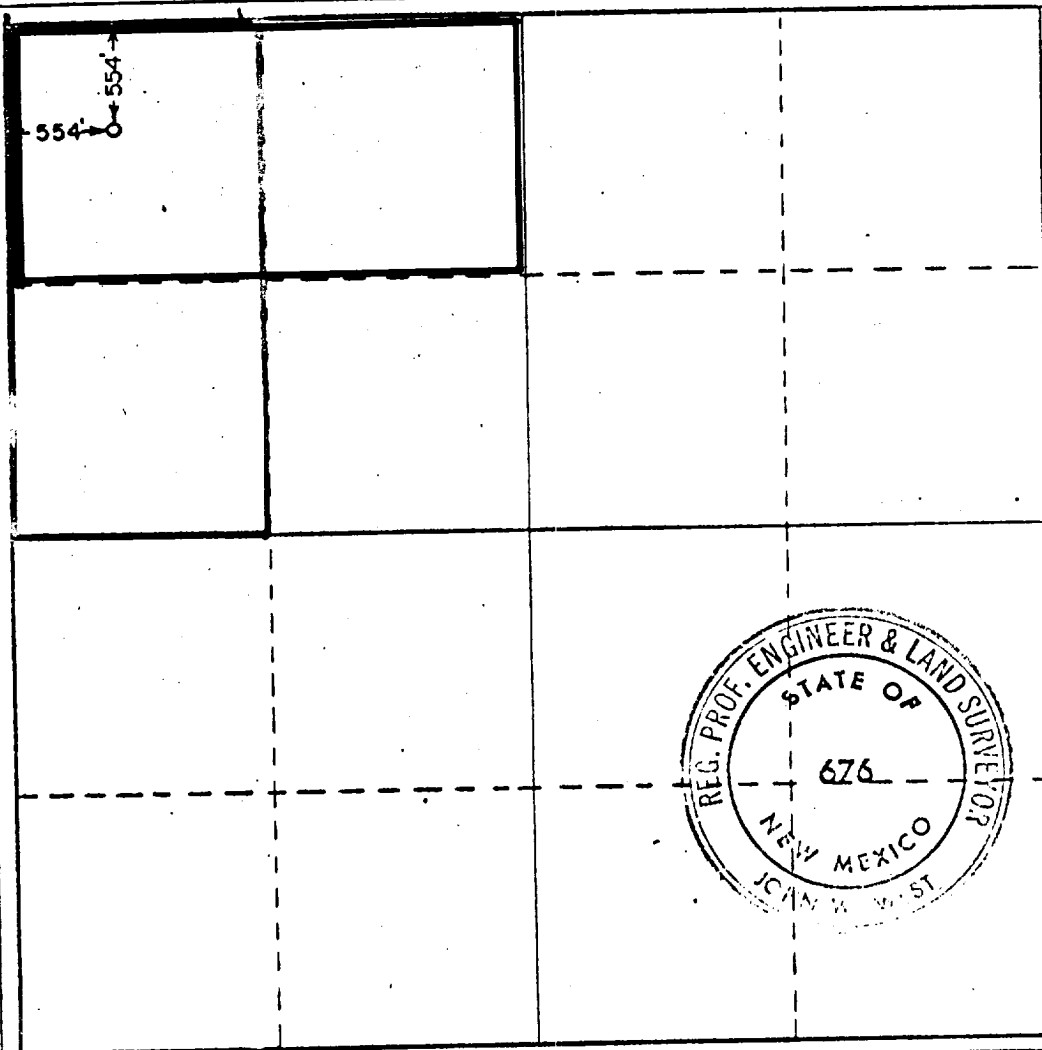
| | | | | | |
|--|--|----------------------------|---------------------------------------|----------------------|---------------------------------------|
| Operator MEADCO PROPERTIES, LTD. | | | Lease ARCO | | Well No. 1 |
| Unit Letter D | Section 26 | Township 9 South | Range 37 East | County Lea | |
| Actual Footage Location of Well: 554 feet from the North line and 554 feet from the West line | | | | | |
| Ground Level Elev. 3973.2 | Producing Formation San Andres | | Pool Sawyer San Andres West | | Dedicated Acreage: 80 Acres |

1. Outline the acreage dedicated to the subject well by colored pencil or hachure marks on the plat below.
2. If more than one lease is dedicated to the well, outline each and identify the ownership thereof (both as to working interest and royalty).
3. If more than one lease of different ownership is dedicated to the well, have the interests of all owners been consolidated by communitization, unitization, force-pooling, etc?

☐ Yes ☐ No If answer is "yes," type of consolidation _____

If answer is "no," list the owners and tract descriptions which have actually been consolidated. (Use reverse side of this form if necessary.) _____

No allowable will be assigned to the well until all interests have been consolidated (by communitization, unitization, forced-pooling, or otherwise) or until a non-standard unit, eliminating such interests, has been approved by the Commission.



CERTIFICATION

I hereby certify that the information contained herein is true and complete to the best of my knowledge and belief.

Name
Bill C. Cotner

Position
Owner

Company
Meadco Properties, Ltd.

Date
12/18/72

I hereby certify that the well location shown on this plat was plotted from field notes of actual surveys made by me or under my supervision, and that the same is true and correct to the best of my knowledge and belief.

Date Surveyed
December 14, 1972

Registered Professional Engineer and/or Land Surveyor

John W. West

Certificate No. **676**