

UNITED STATES  
DEPARTMENT OF THE INTERIOR  
GEOLOGICAL SURVEY

## APPLICATION FOR PERMIT TO DRILL, DEEPEN, OR PLUG BACK

## 1a. TYPE OF WORK

DRILL ☒DEEPEN ☐PLUG BACK ☐

## b. TYPE OF WELL

OIL  
WELL ☒GAS  
WELL ☐

OTHER

SINGLE  
ZONE ☒MULTIPLE  
ZONE ☐

## 2. NAME OF OPERATOR

Meadco Properties, Ltd.

## 3. ADDRESS OF OPERATOR

407 West Wall St., Midland, Texas 79701

## 4. LOCATION OF WELL (Report location clearly and in accordance with any State requirements.)\*

At surface

554 NL &amp; 554 WL

At proposed prod. zone

## 14. DISTANCE IN MILES AND DIRECTION FROM NEAREST TOWN OR POST OFFICE\*

7 miles East, Crossroads, New Mexico

## 16. DISTANCE FROM PROPOSED\*

LOCATION TO NEAREST  
PROPERTY OR LEASE LINE, FT.  
(Also to nearest drlg. unit line, if any) 554'

## 16. NO. OF ACRES IN LEASE

160

17. NO. OF ACRES ASSIGNED  
TO THIS WELL

80

18. DISTANCE FROM PROPOSED LOCATION\*  
TO NEAREST WELL, DRILLING, COMPLETED,  
OR APPLIED FOR, ON THIS LEASE, FT.

1st well

## 19. PROPOSED DEPTH

5,100'

## 20. ROTARY OR CABLE TOOLS

Rotary

## 21. ELEVATIONS (Show whether DF, RT, GR, etc.)

3973.2 GR.

## 22. APPROX. DATE WORK WILL START\*

January 15, 1973

## 23.

## PROPOSED CASING AND CEMENTING PROGRAM

SIZE OF HOLE	SIZE OF CASING	WEIGHT PER FOOT	SETTING DEPTH	QUANTITY OF CEMENT
12-1/4"	8-5/8"	20#	400'	375xx Circulate
7-7/8"	4-1/2"	10.50#	5,100'	350xx

8-5/8" casing to be cemented with 375xx Class H cement with 2% Calcium Chloride.  
This is ample cement to circulate to surface.

4-1/2" casing to be cemented with 350xx of Class C cement, 50-50 pozmix with 2% gel,  
8# salt/sack and 0.75% CFR2 preceded by 500 gallon mud flush.

Mud Program: Water, Gel, and Lime 0-400'  
Native Redbed mud 400'-4700'  
Low-solids salt gel-starch mud 4700'-TD

IN ABOVE SPACE DESCRIBE PROPOSED PROGRAM: If proposal is to deepen or plug back, give data on present productive zone and proposed new productive zone. If proposal is to drill or deepen directionally, give pertinent data on subsurface locations and measured and true vertical depths. Give blowout preventer program, if any.

## 24.

SIGNED

*Bill C. Cotner*

TITLE Owner

DATE 12/18/72

(This space for Federal or State office use)

PERMIT NO.

APPROVED BY

CONDITIONS OF APPROVAL, IF ANY:

TITLE

APPROVED  
DEC 27 1972ARTHUR R. BROWN  
DISTRICT ENGINEER

DATE

\*See Instructions On Reverse Side

**NEW MEXICO OIL CONSERVATION COMMISSION  
WELL LOCATION AND ACREAGE DEDICATION PLAT**

Form C-102  
Supersedes C-128  
Effective 1-1-65

All distances must be from the outer boundaries of the Section

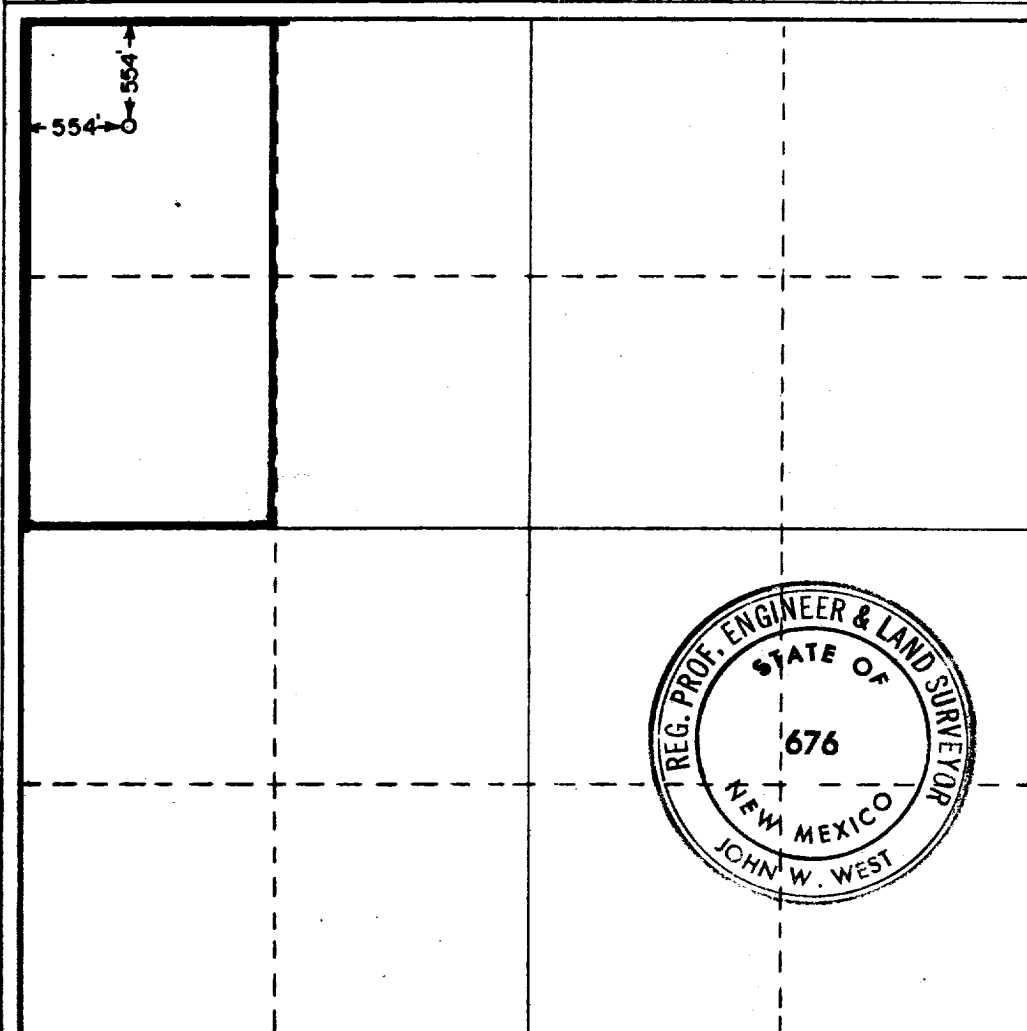
Operator <b>MEADCO PROPERTIES, LTD.</b>			Lease <b>ARCO</b>		Well No. <b>1</b>
Unit Letter <b>D</b>	Section <b>26</b>	Township <b>9 South</b>	Range <b>37 East</b>	County <b>Lea</b>	
Actual Footage Location of Well: <b>554</b> feet from the <b>North</b> line and <b>554</b> feet from the <b>West</b> line					
Ground Level Elev. <b>3973.2</b>	Producing Formation <b>San Andres</b>		Pool <b>Sawyer San Andres West</b>	Dedicated Acreage: <b>80</b> Acres	

1. Outline the acreage dedicated to the subject well by colored pencil or hachure marks on the plat below.
2. If more than one lease is dedicated to the well, outline each and identify the ownership thereof (both as to working interest and royalty).
3. If more than one lease of different ownership is dedicated to the well, have the interests of all owners been consolidated by communitization, unitization, force-pooling, etc?

☐ Yes    ☐ No    If answer is "yes," type of consolidation \_\_\_\_\_

If answer is "no," list the owners and tract descriptions which have actually been consolidated. (Use reverse side of this form if necessary.) \_\_\_\_\_

No allowable will be assigned to the well until all interests have been consolidated (by communitization, unitization, forced-pooling, or otherwise) or until a non-standard unit, eliminating such interests, has been approved by the Commission.



**CERTIFICATION**

I hereby certify that the information contained herein is true and complete to the best of my knowledge and belief.

Name **Bill C. Cotner**

Position  
**Owner**

Company  
**Meadco Properties, Ltd.**

Date  
**12/18/72**

I hereby certify that the well location shown on this plat was plotted from field notes of actual surveys made by me or under my supervision, and that the same is true and correct to the best of my knowledge and belief.

Date Surveyed

**December 14, 1972**

Registered Professional Engineer and/or Land Surveyor

**John W. West**

Certificate No.

**676**

0 330 660 990 1320 1650 1980 2310 2640 2970 3300 3630 3960 4290 4620 4950 5280 5610 5940 6270 6600

RECEIVED

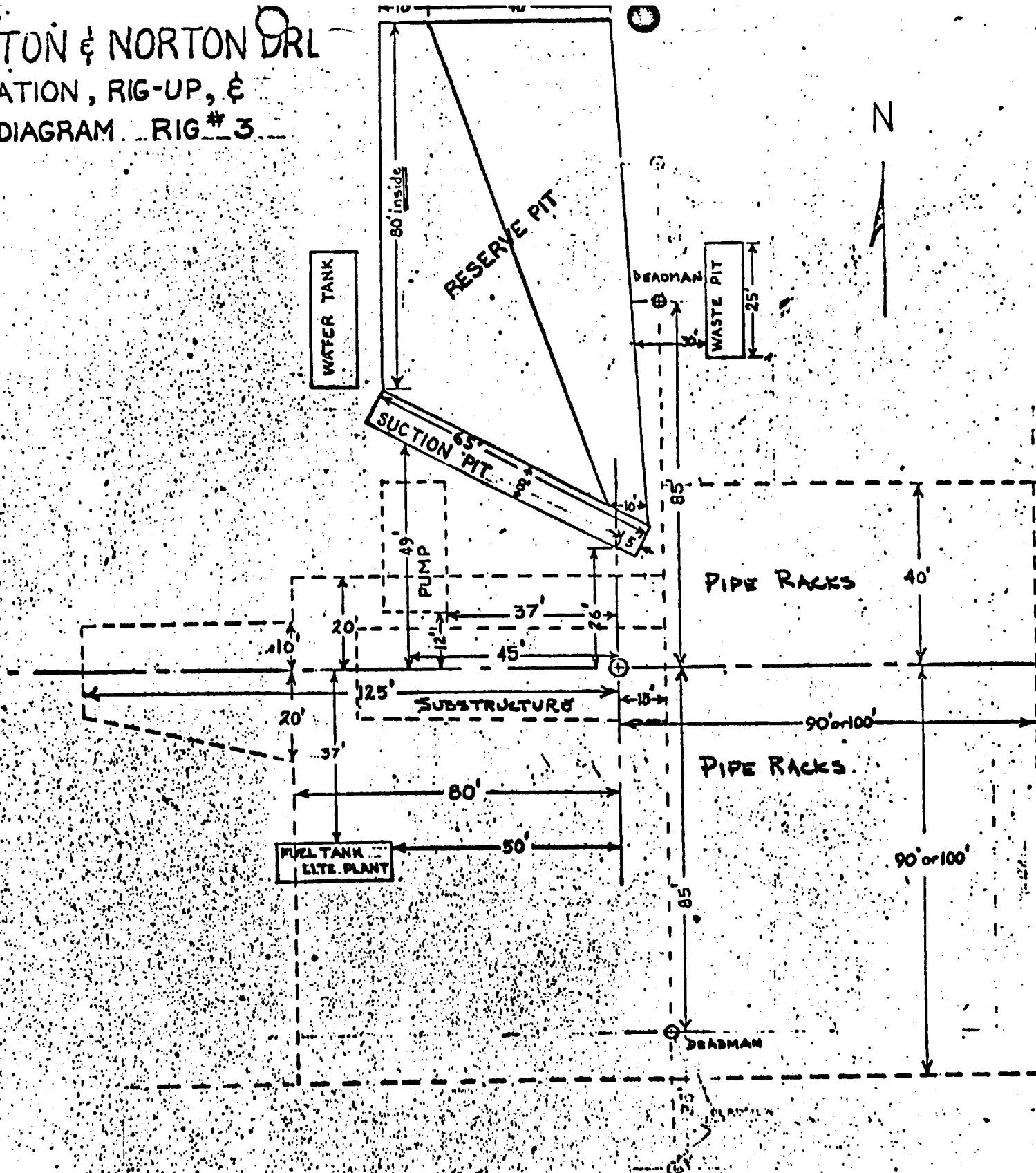
JAN 10 1970

U.S. CONSERVATION COMMISSION  
WASHINGTON, D. C.

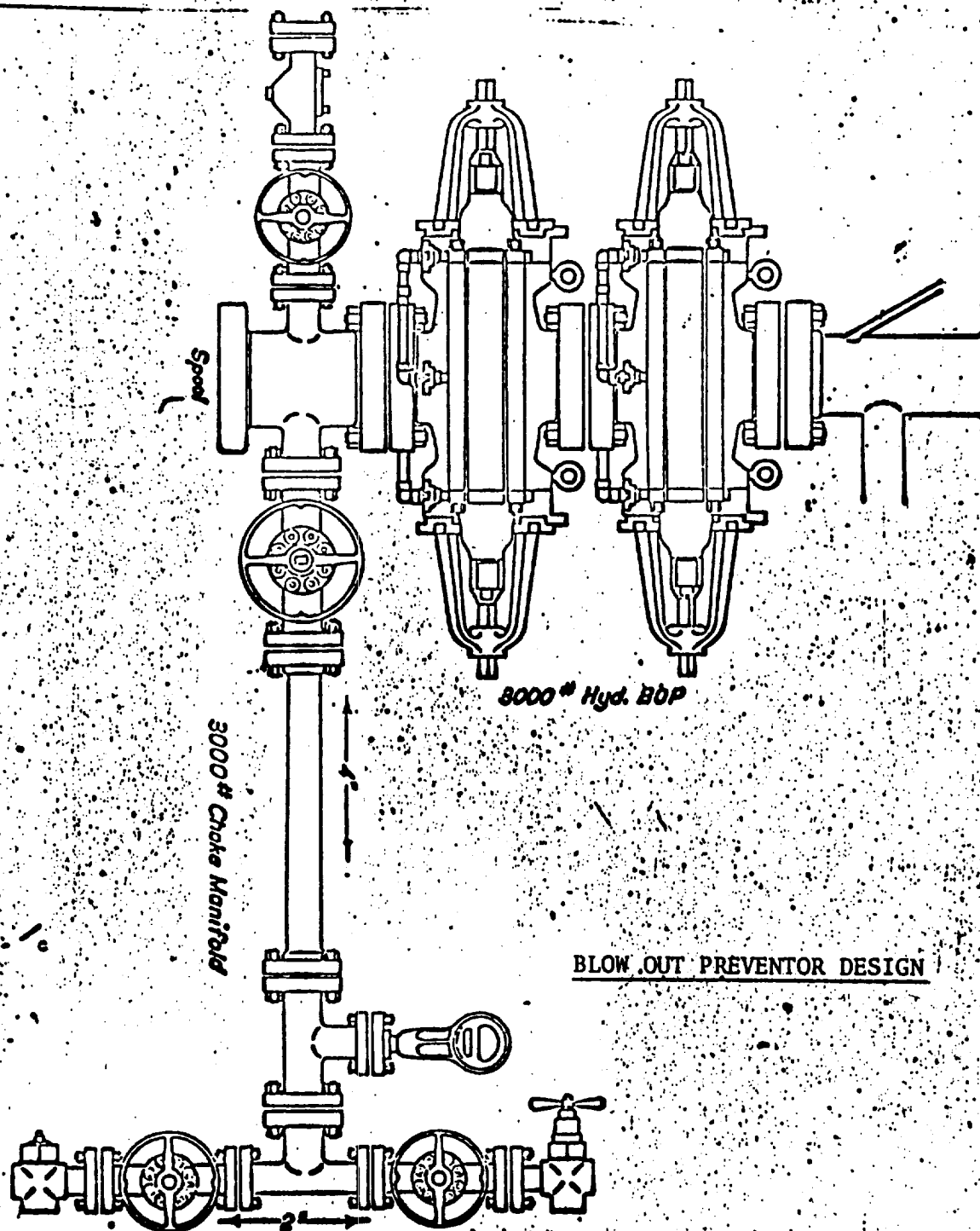
# SITTON & NORTON DRL

## LOCATION, RIG-UP, &

### PIT DIAGRAM RIG # 3

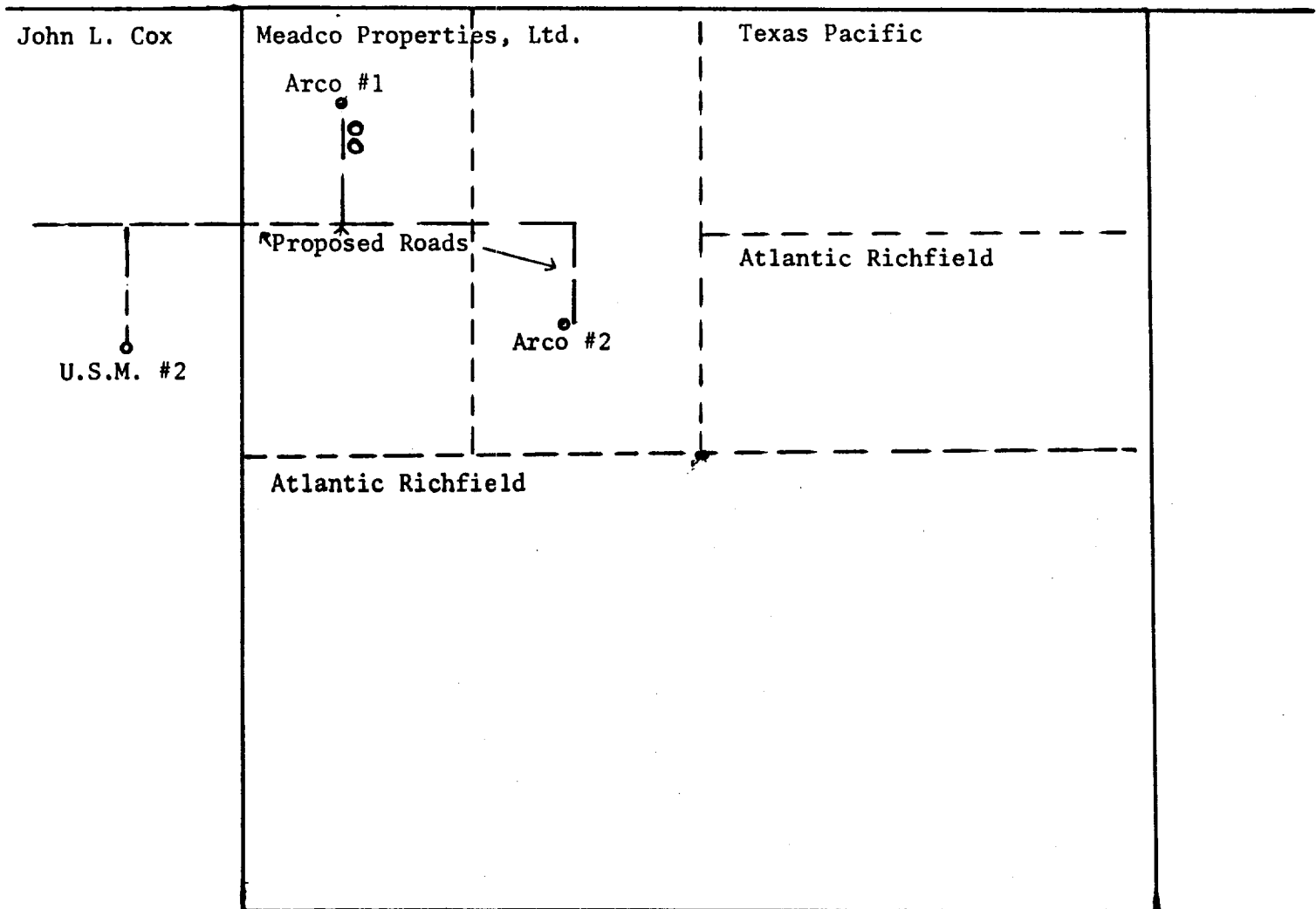


Meadco Properties, Ltd.  
 ARCO #1, Section 26,  
 T-9-S, R-37-E, Lea  
 County, New Mexico



Meadco Properties, Ltd.  
 ARCO #1  
 Section 26, T-9-S, R-37-E  
 Lea County, New Mexico

MEADCO PROPERTIES, LTD.  
 PLAN FOR SURFACE DEVELOPMENT FOR LEASE  
 Section 26, T-9-S, R-37-E, Lea County, New Mexico



oo Proposed tank battery  
 Flow lines to be laid along roads  
 All roads to be 12' wide

MEADCO PROPERTIES, LTD.  
 Arco #1  
 Section 26, T-9-S, R-37-E  
 Lea County, New Mexico