

UNITED STATES
DEPARTMENT OF THE INTERIOR
GEOLOGICAL SURVEY

APPLICATION FOR PERMIT TO DRILL, DEEPEN, OR PLUG BACK

1a. TYPE OF WORK

DRILL ☒DEEPEN ☐PLUG BACK ☐

b. TYPE OF WELL

OIL
WELL ☐GAS
WELL ☐OTHER ☐SINGLE
ZONE ☐MULTIPLE
ZONE ☐

2. NAME OF OPERATOR

Flag-Redfern Oil Company

3. ADDRESS OF OPERATOR

P. O. Box 23, Midland, Texas 79701

4. LOCATION OF WELL (Report location clearly and in accordance with any State requirements.)*

At surface

1874' FWL & 766' FSL Section 23, T-9-S, R-37-E

At proposed prod. zone

Same

14. DISTANCE IN MILES AND DIRECTION FROM NEAREST TOWN OR POST OFFICE*

15 miles east of Crossroads, New Mexico

15. DISTANCE FROM PROPOSED*

LOCATION TO NEAREST
PROPERTY OR LEASE LINE, FT.
(Also to nearest drlg. unit line, if any)

554'

18. DISTANCE FROM PROPOSED LOCATION*
TO NEAREST WELL, DRILLING, COMPLETED,
OR APPLIED FOR, ON THIS LEASE, FT.

None

16. NO. OF ACRES IN LEASE

80

19. PROPOSED DEPTH

5100'

17. NO. OF ACRES ASSIGNED
TO THIS WELL

80

20. ROTARY OR CABLE TOOLS

Rotary

21. ELEVATIONS (Show whether DF, RT, GR, etc.)

3975' GL

22. APPROX. DATE WORK WILL START*

March 15, 1973

23.

PROPOSED CASING AND CEMENTING PROGRAM

SIZE OF HOLE	SIZE OF CASING	WEIGHT PER FOOT	SETTING DEPTH	QUANTITY OF CEMENT
12 1/2"	8 5/8"	24# J-55	400'	250 sx - Circulate
7 7/8"	4 1/2"	9.5# J-55	5100'	250 sx

Drill 12 1/2" hole from surface at approximately 400'. Run & set 8 5/8" casing; circulate cement to surface with 250 sx class H-2% CaCl₂. Drill 7 7/8" hole to approximately 5100'. Run open hole logs. Run 4 1/2", 9.5 lb/ft, J-55 Production Casing; cement with 250 sx class C w/2% Gel, 0.75% CFR-2 & 8 lb salt/sx. Run correlation log; perforate San Andres. Treat with Acid. Swab to Test. Potential Well.

Mud Program - 0-4800' Native Mud

4800-TD Salt Base Mud - Wt 10.3, Vis 38, WL 15cc.

Blowout Preventor - Shaffer 10" - Series 900 - Installed on Surface Pipe.

IN ABOVE SPACE DESCRIBE PROPOSED PROGRAM: If proposal is to deepen or plug back, give data on present productive zone and proposed new productive zone. If proposal is to drill or deepen directionally, give pertinent data on subsurface locations and measured and true vertical depths. Give blowout preventer program, if any.

24.

SIGNED

TITLE Petroleum Engineer

DATE February 27, 1973

(This space for Federal or State office use)

PERMIT NO. _____

APPROVED BY _____

CONDITIONS OF APPROVAL, IF ANY:

TITLE _____

APPROVED DATE

APPROVED
MAR 7 1973ARTHUR R. BROWN
DISTRICT ENGINEER

DATE

**NEW MEXICO OIL CONSERVATION COMMISSION
WELL LOCATION AND ACREAGE DEDICATION PLAT**

Form C-102
Supersedes C-128
Effective 1-1-65

All distances must be from the outer boundaries of the Section.

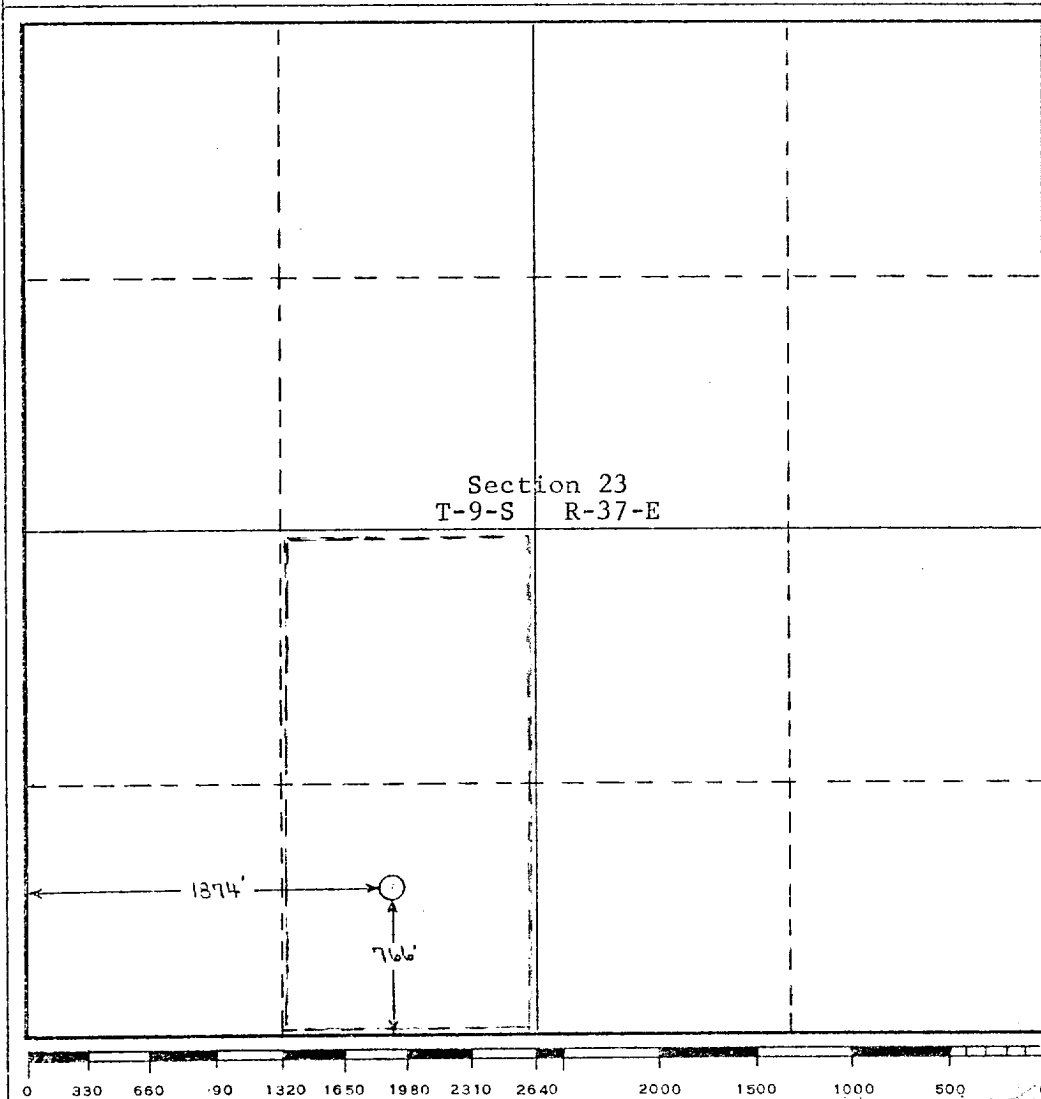
Operator Flag-Redfern Oil Company			Lease Yates-Federal "69"		Well No. 1
Unit Letter A / 1	Section 23	Township 9 South	Range 37 East	County Lea	
Actual Footage Location of Well: <div style="display: flex; justify-content: space-between;"> 1874 feet from the West line and 766 feet from the South line </div>					
Ground Level Elev. 3975'	Producing Formation San Andres	Pool Sawyer	Dedicated Acreage: 80 Acres		

1. Outline the acreage dedicated to the subject well by colored pencil or hachure marks on the plat below.
2. If more than one lease is dedicated to the well, outline each and identify the ownership thereof (both as to working interest and royalty).
3. If more than one lease of different ownership is dedicated to the well, have the interests of all owners been consolidated by communitization, unitization, force-pooling, etc?

☐ Yes ☒ No If answer is "yes," type of consolidation _____

If answer is "no," list the owners and tract descriptions which have actually been consolidated. (Use reverse side of this form if necessary.) _____

No allowable will be assigned to the well until all interests have been consolidated (by communitization, unitization, forced-pooling, or otherwise) or until a non-standard unit, eliminating such interests, has been approved by the Commission.



CERTIFICATION

I hereby certify that the information contained herein is true and complete to the best of my knowledge and belief.

Eugene V. Printz
Eugene V. Printz
 Name
 Petroleum Engineer

Position
Flag-Redfern Oil Company

Company
February 27, 1973

Date

I hereby certify that the well location shown on this plat was plotted from field notes of actual surveys made by me or under my supervision, and that the same is true and correct to the best of my knowledge and belief.

February 23, 1973

Date Surveyed

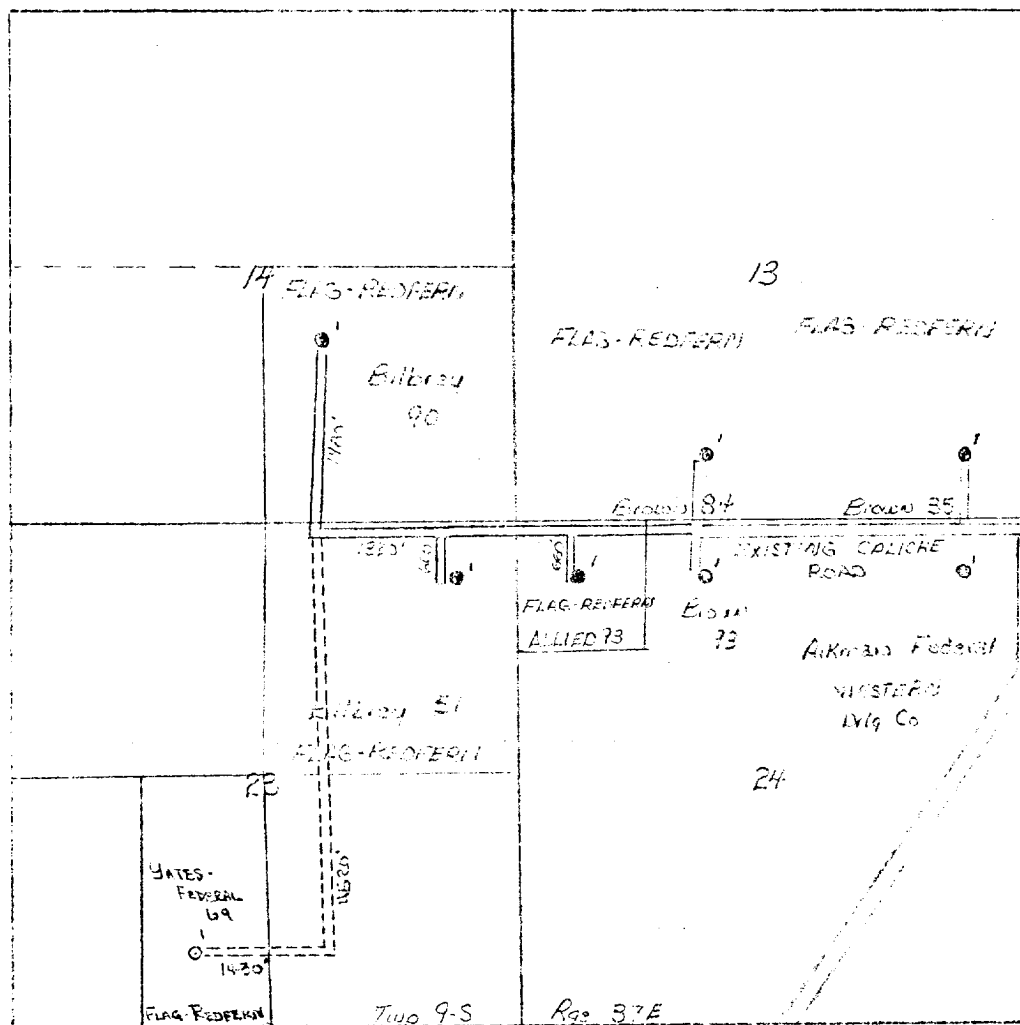
Registered Professional Engineer and/or Land Surveyor

[Signature]
 Certificate No. **754**

DEVELOPMENT PLAN FOR

SURFACE USE.

FLAG - REDFERN OIL COMPANY
SAUTER SAN ANDRES FIELD
LEA COUNTY, NEW MEXICO



FAD DETAIL

TATUM

